

# SCANNER

NEWSLETTER OF THE AMERICAN SOCIETY OF  
HIGHWAY ENGINEERS



April - 1994 - 1

## ASHE NATIONAL EXECUTIVE BOARD 1993 - 1994

### *Message from the President* *Roland Nesslinger, P.E.*

Now that it is National Convention time for ASHE, there will be changes in leadership at the national level. Our new president will be Ray Petrucci from the First State Section, and there will be the normal changes within the executive committee and national director committee assignments. My congratulations to each of these individuals.

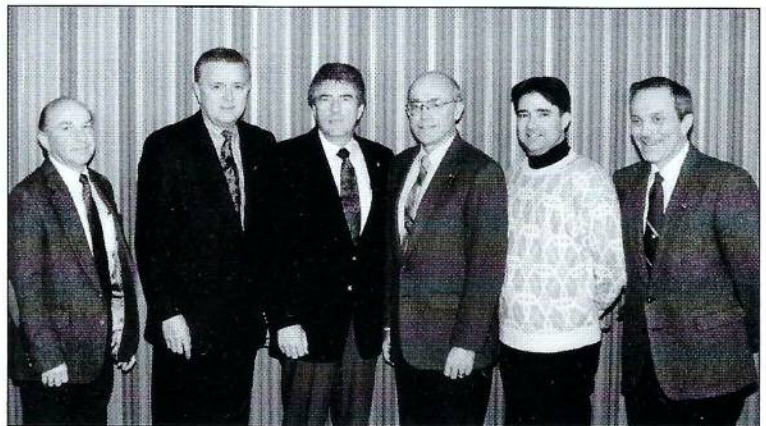
Having served as the Central Ohio Section President as well as nine years on the National Board of Directors, I want to thank all directors and officers who serve ASHE at both national and section level. Most of what we have accomplished in ASHE's relatively short history could not have been done without the continued effort and vision of these elected persons. They serve as volunteers, frequently giving their own time and at some personal expense, in support of their profession.

I would ask all of our members and friends of ASHE to add their words of appreciation to my own in thanking our Society's leadership team.

More than thanks, however, this team needs your support and direction in the year ahead. I see in ASHE a reflection both of our society and our industry. It is a time of rapid change, greater expectations, and seemingly less free time. We need to sharpen our focus on key issues, gain strength in our membership numbers, and speak up on industry affairs – particularly at the local level.

As many others before me have observed when serving a year as National President, the time has come and gone too quickly. My ambitions exceeded that which was possible to achieve. Like a giant ocean vessel, I had hoped to steer a significant change in direction; however, we only changed course a few degrees. This lament is not offered in despair, but rather as

*Continued on page 3*



*L to R: T. Conner, P.E. Secretary; A. W. Kozel, P.E. Past President, T. J. Haslett, P.E. Second Vice President, R. A. Nesslinger, P.E. President, R. Petrucci, P.E. First Vice President, R. E. Yeager, R.S. Treasurer*

**31st Annual ASHE Convention**  
**Trop World Casino and Entertainment Resort**  
**Atlantic City, New Jersey**  
**May 18 to 21, 1994**

# Improve your asphalt paving and chip seal programs

How do you  
prevent rutting and bleeding  
in summer?

The same way you  
reduce cracking and raveling  
in winter...



With *Rub-R-Road* latex additives for asphalt pavements. They work year round to improve pavement performance and life. *How do we know?* For over 40 years *Rub-R-Road* latex additives have proven to provide communities with better roads at lower cost. Start building tougher, longer-lasting, cost-effective pavements today.

Please send Information how  
*Rub-R-Road* paving materials can help:

- ☐ Reduce maintenance costs
- ☐ Retain curb heights by thinner application
- ☐ Retard aging of bituminous pavements
- ☐ Resist temperature extremes
- ☐ Minimize thermal and fatigue cracking
- ☐ Improve aggregate retention
- ☐ Resist deterioration due to moisture
- ☐ Prevent bleeding, rutting and distortion
- ☐ Improve skid resistance

Name \_\_\_\_\_

Title \_\_\_\_\_

Address \_\_\_\_\_

City \_\_\_\_\_

State \_\_\_\_\_

Zip \_\_\_\_\_

Phone \_\_\_\_\_

(      )      /      \_\_\_\_\_

**Call Today 800-992-4995 or  
Fax 216-678-7054**

*Rubber Compounds  
For Better Paving  
™ Since 1951*

**rub·r·road** TM

PO Box 456 Kent, Ohio 44240



# MESSAGE FROM THE PRESIDENT

*Continued from front page*

encouragement for our membership to take a serious look, NOW, at continued efforts to implement ASHE's long range plan and to summon on board professional leadership to guide and encourage ASHE's growth.

Your national board of directors has, from time to time, considered hiring a paid executive director at least on a part time basis. This issue runs aground in discussions on how to fund such a position. Repeatedly we ask ourselves if the success of ASHE is not in part based on low annual dues; but the real question should be, do we want to survive and grow, or not?

As I commented at the outset, ASHE reflects our society and our industry. As at home, in our communities, in our highway program, the question is always – can we afford it? My recommendation is that there is no way we can NOT afford it. ■

## 1994 ANNUAL INTERNATIONAL BRIDGE CONFERENCE

ASHE is proud to be co-sponsor of the 11th Annual International Bridge Conference to be held in Pittsburgh, PA on June 13-15, 1994. Any member of ASHE who is interested in the program for the conference should contact J. Conner (412-929-2760). ■

## LACKAWANNA VALLEY A TOP PRIORITY PROJECT

The Lackawanna Valley Industrial Highway (L.V.I.H.) is the priority Commonwealth project designated by Governor Robert Casey for the needed economic redevelopment of the Lackawanna Valley. The Pennsylvania Department of Transportation is the sponsor of the Project.

This Project has been envisioned for more than four decades by local communities to bring back the prosperity to the Lackawanna Valley which was lost when their major industry, the mining of anthracite coal, declined during the 1950's. The majority of residents in the area believe that the Project will bring about a boost to the Lackawanna Valley and its communities that have been struggling to meet their needs. With these needs in mind, the L.V.I.H. will provide direct access into the Interstate expressway system for those in the region, improve traffic and safety conditions, enhance the opportunities for Industrial Development and improve access for emergency vehicle operations.

L.V.I.H. is to be a new limited access expressway which will help meet future traffic needs and provide economic redevelopment opportunities from Scranton to Carbondale. It will link six communities along the Valley, as well as communities in neighboring counties north and east of Lackawanna County, with both Scranton and Carbondale.

Some opponents to the Project see

it as a "Pork Barrel Project." However, they may be looking at the project only as an expressway from Scranton to Carbondale when, in fact, it is much more. The overall Project consists of a thirteen mile, four lane limited access freeway with seven interchanges and new connecting access roads in to the valley's roadway system. The Project also includes reconstruction of the adjoining interchange of Interstates I-81/I-84/I-380 where the L.V.I.H. will connect. Reconstruction and lane additions to I-84 from the interchange to Exit 1, as well as I-81 from the North Main Avenue Exit #56 south to Exit #53, the Central Scranton Expressway are also included.

The Project encompasses approximately seven miles of the interstate system and thirteen miles of new limited access freeway comprising seventy structures, including bridges, retaining walls, culverts and noise walls. The estimated cost is \$450 million, of which \$245 million is for the Interstate system improvements and \$215 million for the thirteen miles of L.V.I.H. construction is to begin in early 1994.

The Project is designed to reinforce the Valley's combination of environmental, economic and community goals while enhancing planned development sites with little impact on residential areas. ■

*Written by: Robert W. Reim  
Technical Chairman, N.E. Penn Section*

# Yes!

I know how important good highways are to the Commonwealth. I want to join PHIA and receive newsletters promoting highways and bridges for the economic development of Pennsylvania.

☐ Payment enclosed ☐ Bill me

Name \_\_\_\_\_

Company \_\_\_\_\_

Address \_\_\_\_\_

Questions: Call (717) 236-6021

## Dues Structure

(Check one)

- |                                                |              |
|------------------------------------------------|--------------|
| <input type="checkbox"/> Individual            | \$30 minimum |
| <input type="checkbox"/> Service organizations | 100          |
| <input type="checkbox"/> Business              | 150 to 499   |
| <input type="checkbox"/> Sustaining            |              |



"Driving for  
Better Roads."

Return to:  
PA Highway Information Association  
800 North Third Street  
Harrisburg, PA 17102  
Bob Hetherington,  
Managing Director



# NATIONAL BOARD NEWS

The National Board held a regular board meeting on January 21, 1994 at Bedford, PA. National President, Ronald A. Nesslinger presided over the meeting which included the following committee actions and reports:

## NEW SECTIONS COMMITTEE:

Chairman Greenwood indicated that contact with groups in Atlanta, GA; Charlotte, NC; Lansing, MI; Springfield, IL; Indianapolis ID; and Bismarck, ND are continuing on the program for ASHE expansion.

## MEMBERSHIP COMMITTEE:

Chairman Martin presented a variety of membership concerns that sections are encountering. He encourages all sections to contact him so his committee can assist and address any problems.

## NATIONAL CONVENTION:

J. Charles stated the convention for Atlantic City is finalized and all programs are in place for a successful convention. Registration forms have been sent to the membership. Plan to attend on May 18-21, 1994 at the Trop World.

L. Williams reported the 1995 convention in Pittsburgh is progressing and will have the theme "Gate-

way to the Future".

## SCANNER COMMITTEE:

Chairman Petrucci reported on the advertising in the Scanner and the need for the Sections to obtain ads from firms in their local area. Also, the Scanner is available for news from the Sections on their programs and events.

## REORGANIZATION COMMITTEE:

Chairman Haslett reported that he received comments from six sections regarding the boundaries for the initial regional lines and has received five recent comments. The Committee is reviewing all comments and will refine the guidelines to satisfy the membership's comments. Sections should express their comments in writing and send to the committee.

## NOMINATING COMMITTEE:

Chairman Kozel reported that the committee has reviewed the nominations for second vice president, section directors and the Man/Woman-of-the-Year. The nomination of D. Greenwood received unanimous support from all sections and was an easy selection for the committee. The selection of the Man/Woman-of-the-

Year was a very different selection and was finally resolved after a very close vote due to the outstanding individuals who were nominated by the sections. The nominees presented by sections were:

David L. Dillon - N.E. Penn  
Howard Yerusalim - Harrisburg  
Ellis S. Vieser - Southern NJ  
Joseph Vottilana - First State  
Robert Hetherington - Pittsburgh

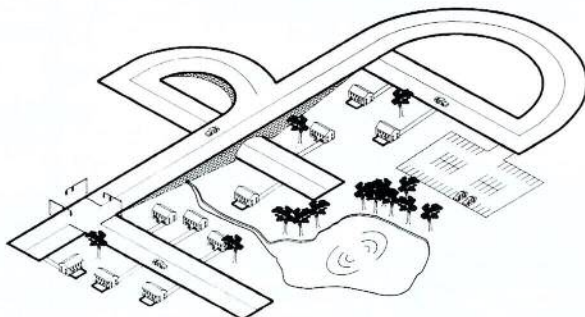
E. S. Vieser was selected as ASHE Man-of-the-Year for 1994. Congratulations to Southern NJ Section for their choice of such an outstanding person who has made a major contribution to the highway industry in the past years.

## DIRECTORY COMMITTEE:

J. Charles and A. Kozel advised the Board that the National Directory has been mailed to the membership. Directories are available for new members and any new sections. Distribution of directories in the future will be through the National Directors and Sections. ■

## Traffic Planning & Design, Inc.

Traffic Studies  
Highway Design  
Environmental Impact Analysis



1003 Egypt Road  
Oaks, Pennsylvania 19456  
(215) 935-5620  
Fax (215) 935-5626

Highway • Structural • Municipal • Sanitary • Water •  
Industrial • Environmental • Construction Inspection



consulting engineers  
planners & surveyors

METISH, KUNKEL & ASSOCIATES

2403 Sunshine Road  
Allentown, PA 18103  
ac 610-791-2700

R.D. #3 Box 320B  
Belle Vernon, PA 15012  
ac 412-929-2760

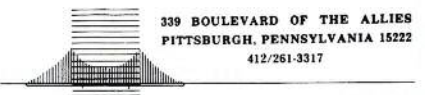


**alfred benesch & company**

CONSULTING ENGINEERS

P.O. BOX A • 474 NORTH CENTRE STREET • POTTSVILLE, PA 17901  
717/622-4055 • FAX 717/622-1232 Corporate Office: Chicago, IL

## KOZEL ENGINEERING CO., INC.



Civil • Structural • Environmental • Architectural • Planning  
Inspections • Design • Management • Highways • Bridges  
Buildings • Water Treatment • Municipal • Industrial • Recreation

# ASHE PITTSBURGH SECTION MONTHLY MEETING, FEBRUARY 22, 1994

At the monthly meeting of the Pittsburgh Section held on February 22, 1994, Pennsylvania Turnpike Commissioner James Dodaro was the featured speaker for the evening. Mr. Dodaro discussed the background of the Turnpike Commission as a revenue-producing toll road as well as the recent completion of James E. Ross Highway and the Amos K. Hutchinson Highway, two major projects in western Pennsylvania. Mr. Dodaro then shared some insight on the current design and construction schedule for the Mon-Fayette Expressway. With regard to the

mainline Turnpike, Mr. Dodaro indicated that the Commission currently plans to spend \$150 million annually for maintenance and rehabilitation. ■



*Pennsylvania Turnpike Commissioner James Dodaro was the featured speaker at the February monthly meeting of the Pittsburgh Section.*

**The First Name in Transportation**

## PARSONS BRINCKERHOFF

- Engineers
- Planners
- Construction Managers

1500 Walnut St., 3rd Floor  
Philadelphia, PA 19102  
(215) 735-1457

**60+ Offices Worldwide**

### PME CONSULTANTS, INC.

**STRUCTURAL ENGINEERS** PHONE 412-327-7297  
117 SAGAMORE HILL ROAD  
PITTSBURGH, PA 15239

BRIDGES • DAMS • SPECIAL STRUCTURES •  
STRUCTURAL INSPECTION & EVALUATIONS



**The EADS Group**

**CORPORATE OFFICES**  
Altoona (800) 626-0904

**NEILAN ENGINEERS DIVISION**  
Somerset (814) 445-6551  
Pittsboro (412) 856-1510

**GENERAL ENGINEERING DIVISION**  
Clarion (814) 226-8440

engineers • architects • surveyors • scientists

**Johnston, Mirmiran and Thompson, P.C.**

PLANNERS ENGINEERS LANDSCAPE ARCHITECTS SURVEYORS

2555 KINGSTON ROAD • SUITE 130 • YORK, PA • 17402 • (717) 757-2600  
BALTIMORE, MD. FAIRFAX, VA FAX (717) 751-0455

P.O. Box 67100 • Harrisburg, PA 17106  
(717) 763-7211

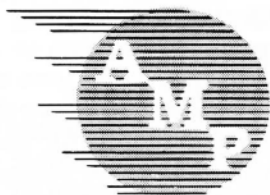
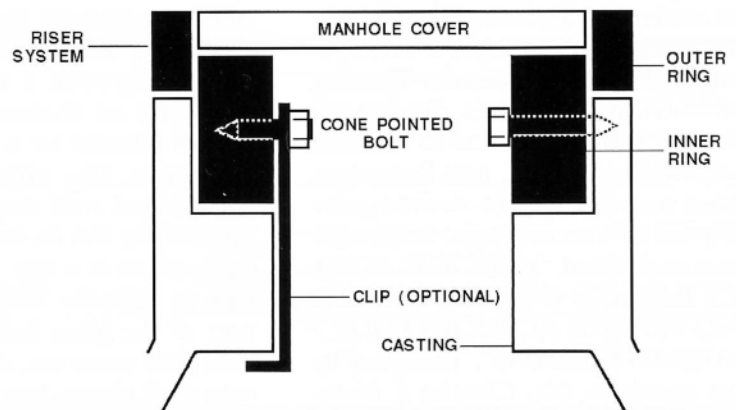
**Gannett Fleming**  
ENGINEERS AND PLANNERS

Transportation Planning • Environmental Studies  
Bridges • Highways • Traffic Engineering  
Design • Construction Management

Baltimore, MD  
Charlotte, NC • Columbus, OH  
Hammon, NJ • King of Prussia, PA  
Newport News, VA • Pittsburgh, PA • South Plainfield, NJ

## YOU CAN SAVE MORE IN '94 WITH THE MOST DEPENDABLE CASTING GRADE ADJUSTMENT RISER SYSTEM AVAILABLE

- Complete Line Of Catch Basin, Curb Inlet, Manhole, and Monument Box Risers
- Available in 1/4 Inch Height Increments
- State Approved Steel Frames and Grates
- American Made by American Craftsmen
- Domestic A-36 Steel Construction
- Fabricators of Ferrous and Non-Ferrous Products for the Highway Industry



### ANDREWS METAL PRODUCTS, INC.

745 Andrews Avenue • Youngstown, Ohio 44505  
(216) 744-3900 Fax (216) 744-1044  
1-800-837-3901



# 1994 NATIONAL CONVENTION

The Southern New Jersey Section welcomes everyone to attend the 1994 National Convention in Atlantic City, Wednesday, May 18 through Friday, May 21. The convention will be held at the Trop World Casino and Entertainment Resort. The theme for the 1994 convention is "INTERMODAL MOBILITY IN THE 90's".

Speakers from all areas of the transportation field will be discussing this theme in four program sessions. Two sessions will be an open forum discussion between several speakers, in which, all attendees will then be encouraged to participate in a question and answer period. The other two sessions will be technical presentations. The first session begins Thursday morning with an open forum discussion entitled "INTERMODALISM AT WORK". There will be three speakers, Mr. Richard D. Johnson, The Chief Engineer of the Northeast Corridor Improvement Project for AMTRAK, Mr. Harry Winters of the United Parcel Service, and Mr. J.B. Hunt, President of J. B. Hunt Transport, discussing intermodal design as it relates to their facilities. The next two sessions will be simultaneous technical presentations on Friday morning. Mr. James Schultz, P.E. from the N.J. Highway Authority discussing a newly opened transportation center in Montvale, N.J., and Mr. Jack Hargrove, Transportation Systems Manager for Gannett-Fleming Consulting Engineers discussing intermodal transportation as it relates to railways, airports, and highways. These sessions will be immediately followed by a second open forum discussion entitled "HOW THE ISTEA ACT IMPACTS ON GOVERNMENT AND PRIVATE AGENCIES POLICY MAKING DECISIONS". There will be four speakers, Mr. Charles J. Nemmers, P.E., Division Administrator for FHWA N.J. office Region I, Mr. Dennis Keck, NJDOT Assistant Commissioner for Policy and Planning, Ms. Mary K. Murphy of the Port Authority of New York and New Jersey, and Dr. James Constantino, P.H.D. Executive Director for the Intelligent Vehicle Highway Society of America, dis-

cussing ISTEA and intermodal concepts. The program portion of the convention will conclude with a field trip to the Federal Aviation Administration Technical Center in Atlantic City on Friday afternoon.

Entertainment will not be sacrificed at this convention. We will kick-off the festivities with the annual golf tournament. The tournament will begin Wednesday at 10:00 AM at the Blue Heron Pines Golf Club in Gallopway Twp. This world class golf course has won considerable acclaim from Golf Magazines and Golf Week, and has been compared to the Pine Valley Country Club in N.J. and the Pinehurst in N.C. The Blue Heron Pines Golf Club is a par 72 course with 5 tee placements on each hole. The Calloway handicap system will be used and prizes will be awarded for lowest net, closest to the pin, longest drive among others. This is sure to be a golfing pleasure for all.

A fishing trip has been scheduled for all you anglers on Wednesday at 12 noon.

The Ice Breaker Reception will be at the Trop World Casino beginning at 7:00 PM. A meal of outstanding quality as well as quantity will be provided, so bring your appetites.

We have not left out the spouses. First and foremost, each spouse will receive a nice gift from Lenox. Also, there are activities for each day beginning with a trip to Historic Smithville on Wednesday at 12 noon which should be a delight for all shoppers. The village consists of antique and craft shops. Lunch at the Smithville Inn is included. Thursday's event is a trip to Wheaton Village in Millville. This trip includes a tour of the glass factory, the largest U.S. glass museum, and a visit to the area craft shops. Lunch at the Country Kitchen is included. This is followed by a tour of Renault Winery in Egg Harbor City. Wine tastings are the highlight of this tour. Friday concludes the program with a visit to Cape May. Included are: A trolley tour of several Victorian historic houses, a walking tour of the Emlen Physic 18 room historic mansion, and

an authentic Victorian fashion show luncheon. Each trip will feature a drawing for a nice prize.

The convention will conclude on Friday night beginning with a cocktail hour at 6:00 PM followed by the annual banquet at 7:00 PM.

The Trop World Casino and Entertainment Resort provides gambling, entertainment and accommodations for all. The entertainment ranges from music to comedy to sporting events to the unique Tivoli Pier. Tivoli Pier consists of three levels that provide a boardwalk atmosphere inside the casino. There are indoor rides, such as a roller coaster, bumper cars and a space shuttle simulator. These rides are surrounded by food stands, games, and the Red Lips Saloon, which is the source of the entertainment. The accommodations include a health club, sauna, indoor and outdoor pools, and a lighted tennis court. This is truly a trip for the entire family to enjoy. For information concerning room reservations, please call (609) 340-4000. The last date to guarantee the convention room rate is April 25, 1994. Reservations made after that date will not be guaranteed.

Travel into Atlantic City can be achieved by many types of transportation. The Atlantic City International Airport schedules the following airlines: Continental, Northwest, Spirit, and U.S. Air. Please call the appropriate airline for flight information. Shuttle service is available from the airport, for shuttle service information call (609) 272-8373. Arrangements can also be made through AMTRAK and NJ TRANSIT. For information call 1-800-871-7245 and 1-800-228-7246 respectively.

Finally, congratulations to Mr. Frank S. Lopez, Jr. of the North Central West Virginia section for winning the early registration contest of a room upgrade. Mr. Lopez will be enjoying the convention in a plush suite worth \$258. Enjoy your stay.

With your participation, this convention will surely be the finest. For additional information, please call Joe Pavlik at (609) 265-5377. ■



# 1994 ASHE CONVENTION REGISTRATION

"Intermodal Mobility in the 90's"

**May 18 – 21 ,1994**

**Trop World Casino and Entertainment Resort**

**Atlantic City, New Jersey**

<b>Registration Information:</b>		<i>Please print or type</i>	DATE: _____
Name:	_____	Guest Name:	_____
Address:	_____		
	_____		
	Telephone No.: (     ) _____		
ASHE Member:	Yes <input type="checkbox"/>	_____	Section _____
	No <input type="checkbox"/>		

<b>Name Badge Information:</b>	
<input type="checkbox"/>	Use name information as indicated above
<input type="checkbox"/>	Use the following for Name Badge:
Name:	_____
Guest:	_____

Convention Activities	Fee (per person)	Persons Attending	Total Fee
Convention Registration	Prior to April 15, 1994		
	After April 15, 1994		
Registration for Technical Sessions Only **	\$40.00		
<b>Wednesday, May 18</b>			
Golf Tournament (10:00 am) *	\$70.00		
Fishing Trip (12:00 noon)*	Pay at Dock		---
Ice Breaker Reception in Exhibit Area (7:00 pm to 10:00 pm)	\$10.00		
Spouse Activity – Trip to Smithville (12:00N to 4:30 pm) §	\$17.00		
<b>Thursday, May 19</b>			
General Session (8:30 am to 9:30 am)	None		---
Technical Sessions: Open Forum (9:45 am to 11:45 am)	None		---
Luncheon: 12:00 noon (Past Presidents, Person of the Year, Golf and Fishing Awards)	\$17.00		
Spouse Activity – Trip to Wheaton Village & Renault Winery § (9:00 am to 5:00 pm)	\$22.00		
<b>Friday, May 20</b>			
Technical Sessions:	None		---
1 (8:00 am to 9:00 am)			
2 (8:00 am to 9:00 am)			
Technical Sessions: Open Forum (9:15 am to 11:15 am)	None		---
Technical Field Trip: (1:00 pm to 4:00 pm) §	None		---
Spouse Activity – Trip to Cape May (9:00 am to 4:30 pm) §	\$27.00		
Convention Banquet:			
Cocktails at 6:00pm, Dinner at 7:00 pm	\$35.00		
Entertainment 9:00 pm to ??			

***Make checks payable to 1994 ASHE National Convention for the total amount of:***

***Mail completed registration form with appropriate fee enclosed to:***

**1994 ASHE Convention Registration**

**11 Halley Lane**

**Sewell, New Jersey 08080**

\* – Check into hotel Tuesday night at same rate or hotel will store luggage at Wednesday morning checkin.

\*\* – Not eligible for other convention activities unless upgraded to full registration.

§ – Transportation provided

# As the Wheel Turns...



## HRG OPENS FIFTH OFFICE TO SERVE WESTERN PA



Herbert, Rowland & Grubic, Inc. (HRG) is pleased to announce the opening of their fifth office at 215 Executive Drive in Cranberry Township (Mars), Pennsylvania. With existing offices in Harrisburg, Lancaster, State College and Gettysburg, Pennsylvania, the addition of the Pittsburgh area office allows the consulting engineering firm greater accessibility to their clients in western Pennsylvania.

Direction of the office will be provided by John N. Walluk, AICP, Regional Manager. Mr. Walluk is the former Director of Public Works for the City of Pittsburgh, and brings to HRG over twenty years of experience in the areas of physical planning, urban design, community development, facilities management, maintenance operations, and program administration. He earned his Bachelor of Community Planning from the University of Cincinnati in 1972, followed by a Master of Architecture and Master of Regional Planning from Cornell University in 1974 and 1975.

Mr. Walluk is actively involved with the American Institute of Architects, American Planning Association, American Public Works Association, American Society of Highway Engineers and the Engineers Society of Western Pennsylvania.

HRG provides multi-disciplined services in the areas of engineering, landscape architecture, planning and financial consulting. Inquiries concerning project services are welcome, and additional information may be requested by contacting the Pittsburgh area office at (412) 779-4777.

## "Help Wanted"

### TRANSPORTATION CONSTRUCTION MANAGER (TOM-1 OR 2) INSPECTOR SUPERVISOR (TCIS) INSPECTORS (TCI)

Seeking construction inspection personnel with experience in PennDOT procedures for inspection and documentation. For 1994-95 projects.

**P. JOSEPH LEHMAN, INC.**  
CONSULTING ENGINEERS

OLDE FARM OFFICE CENTRE  
POST OFFICE BOX 419  
HOLLIDAYSBURG, PA 16648

### ADVERTISING AND COPY DEADLINE FOR THE NEXT SCANNER ISSUE:

June 15, 1994

MAIL TO: ASHE SCANNER  
c/o Al Kozel  
339 Blvd. Of The Allies  
Pittsburgh, PA 15222

## THE SCANNER

• Published quarterly • Over 3,800 Circulation

28% are State D.O.T. Employees  
43% are Engineering Consultants  
16% are Contractors  
13% are Related Professions  
49% of the membership have a professional status.

### RATES/SIZES

	Full Page	1/2 Page	1/4 Page	Bus. Card	Want Ad
1X	\$250	\$130	\$75	\$40	\$40
2X	235	120	70		
3X	225	110	60		
4X	200	100	50		

Spot Color - Add 15%

Full Page 7-5/8 x 10"

Half Page - 7-5/8 x 5" or  
3-13/16 x 10"

Qtr. Page - 3-13/16 x 5"

Bus. Card - 2-1/2 x 1-1/2"

Want Ads - 20 Words or Less

Special Ads, call Editor.

\*Note: Spot Color is determined by the color used in the issue.

## SCANNER ADVERTISING INSERTION ORDER

TO: ASHE SCANNER  
Al Kozel, Managing Editor  
339 Blvd. of the Allies  
Pgh., PA 15222

From \_\_\_\_\_  
\_\_\_\_\_  
\_\_\_\_\_

Contact \_\_\_\_\_ Phone ( ) \_\_\_\_\_  
Authorized Signature \_\_\_\_\_

Date \_\_\_\_\_ Section Affiliation \_\_\_\_\_

Ad Size ☐ Full Page ☐ Half Page ☐ Quarter Page ☐ Business Card ☐ Want Ad ☐ One Color

NOTE: Ads are black-and-white unless color is specified.  
Colors are coordinated with issue press run color

Scheduled Issue For Insertion ☐ Winter ☐ Spring ☐ Summer ☐ Fall

Rate / Insertion \$ \_\_\_\_\_ Total \$ \_\_\_\_\_

Camera-Ready Art ☐ Attached ☐ To Follow

Want Ad Text ☐ Attached

TOTAL RUNS ☐ 1x ☐ 2x ☐ 3x ☐ 4x ☐ TPN\*  
\*Till Further Notice @ 4x Rate

☐ Payment Enclosed  
☐ Bill Me

Make Check Payable To ASHE





Engineers  
and  
Planners

## A Total Transportation Resource

*Providing Quality Services  
for more than 35 Years*

Transportation • Structural  
Geotechnical • Environmental Studies  
Construction Services  
Mechanical and Electrical • GIS  
Materials Testing • Water Resources  
Archaeology • Cultural Resources  
Hazardous Substance Studies

**KCI Technologies, Inc.**

Harrisburg • Philadelphia • Pittsburgh

*Please contact:*

5001 Louise Drive, Suite 201  
Mechanicsburg, PA 17055  
(717) 691-1340

*Headquarters:* 10 North Park Drive  
Hunt Valley, MD 21030-1888 • (410) 316-7800

*Regional Offices:* Virginia • Delaware • New York  
Washington, DC • North Carolina • Florida

## PITTSBURGH SECTION PAST PRESIDENTS DINNER OCTOBER 16, 1993

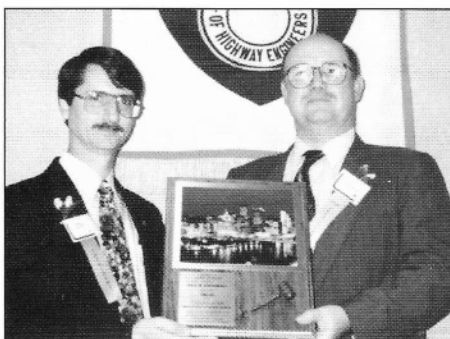
The Pittsburgh Section held its annual Past Presidents dinner on October 16, 1993 at the Greentree Marriott Hotel in Pittsburgh. John DeRoss was the Master of Ceremonies for the event. The purpose of the dinner was to honor all the individuals who served as President of the Pittsburgh Section in the past. This year's President John Maffeo presented last year's President Paul Ostrowski with the Past Presidents plaque honoring his year of service. Mr. Ostrowski then presented the President's Award to Dennis McClain for his outstanding leadership as chairman of the Membership committee during 1993. The featured speaker for the evening was National President Roland Nesslinger who spoke on the current reorganization effort at the National level. A total of 250 members and guests attended the annual banquet. ■



*National President Roland Nesslinger speaking on the state of ASHE.*



*Past Presidents attending the dinner included l. to r. - R. Melani, A. Kozel, D. Gennuso, L. Williams, R. Nesslinger (National President), M. Mlinarich, B. Adams, B. Becker, B. Balkovec, J. DeRoss, B. Bury, and P. Ostrowski.*



*Current Pittsburgh President John Maffeo presents last year's President Paul Ostrowski with the Past Presidents Award.*



## NOTICE NATIONAL DIRECTORY

**Members** - Change of address and update information for the membership directory can be made using the form in the Directory.

**Sections** - A computer diskette is available to each section for their membership listing. Contact Jim Charles at (215) 922-8080. Update your section records.

**Note** - Directories are available to sections for their new members. Sections should advise their National Director of the number of directories required or call A. Kozel (412) 261-3317. Directories will not be mailed to individual members after the original mailing but will be distributed by the sections.

# HRG

Engineering & Related  
Services Since 1962

HERBERT, ROWLAND & GRUBIC, INC

Bridges - Highways - Traffic Engineering  
Civil Engineering - Environmental Services  
Planning - Surveys - Construction Administration

Harrisburg (717) 564-1121  
Lancaster - State College - Gettysburg - Pittsburgh

**HDR Engineering, Inc.**

# HDR

**Transportation Specialists**

• Bridges • Highways • Tunnels • Transit  
• Planning • Railroads • Airports

3 Gateway Center  
Pittsburgh, Pennsylvania 15222

Telephone: 412 497-6000  
Fax: 412 497-6080

Over 75 Years of Engineering Excellence

**P. Joseph Lehman, Inc.**

Consulting Engineers

P.O. Box 419  
Hollidaysburg, PA 16648  
(814-695-7500)

.....providing bridge and roadway design  
and related Civil Engineering services.....

# RK &K

• TRANSPORTATION  
• ENVIRONMENTAL  
• GEOTECHNICAL  
• CONSTRUCTION INSPECTION SERVICES

**RUMMEL, KLEPPER & KAHL**

Consulting Engineers

1309 Bridge Street, New Cumberland, PA 17070  
(717) 774-1386 • 1 (800) 787-3755

Baltimore, MD Raleigh, NC Washington, D.C.  
Virginia Beach, VA Richmond, VA

# FH

**Frederic R. Harris, Inc.**

**Quality is our Business**

• Highways & Bridges • Mass Transit •  
• Airports • Ports & Harbors •  
• Environmental •

260 S. Broad St.  
Suite 720  
Philadelphia, PA 19102  
(215) 735-0832

Two Gateway Center  
Suite 620  
Pittsburgh, PA 15222-1450  
(412) 355-2054

▲ Transportation  
▲ Environmental  
Planning  
▲ AM/FM  
▲ Bridge  
Inspection  
▲ Construction  
Management

# bh

**BUCHART  
HORN, INC.**

Headquartered in York, PA:  
717 843 5561  
Other offices throughout the  
East Coast

# Ebasco Infrastructure

**Exciting career opportunities on the I-95 Intermodal Mobility Project and other  
challenging assignments in Pennsylvania, Delaware and New Jersey.**



- Bridge/highway design
- Transportation planning
- Traffic engineering
- Incident management systems
- Intermodal systems design
- Air quality/noise modeling
- Environmental studies
- Program/construction management

**EBASCO INFRASTRUCTURE**  
A Division of Ebasco Services Incorporated

Send resume to:  
One Oxford Valley, Suite 215, Langhorne, PA 19047  
(Tel) 215-752-8595

Ebasco is providing preliminary engineering and program management services for the Pennsylvania Department of Transportation's 51-mile I-95 Intermodal Mobility Project.

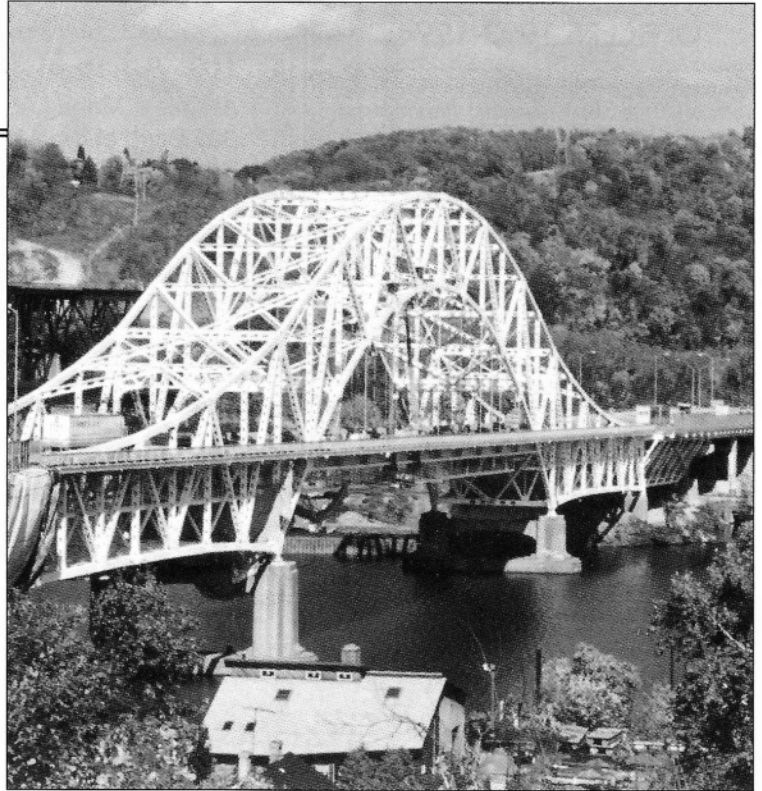




412/ 856-6400  
FAX 412/ 856-4970

## Full-Spectrum Engineering Consulting Services

- ▲ Civil
- ▲ Environmental
- ▲ Geotechnical
- ▲ Structural
- ▲ Mining
- ▲ Environmental Studies
- ▲ Highways and Bridges
- ▲ Traffic and Transportation
- ▲ Construction Monitoring



Pittsburgh, PA    Orlando, FL    Raleigh, NC    Charleston, WV    Mt. Laurel, NJ    Ft. Wayne, IN

### ***DLZ Corporation***

Dodson-Lindblom Assoc. • Stilson & Assoc. • SEG • JDJ&A • Cole Assoc.

ENGINEERING • ARCHITECTURE • ENVIRONMENTAL

6121 Huntley Road • Columbus, OH 43229-1003  
Telephone: (614) 888-0040 • FAX: (614) 848-6712

### **R.D. Zande & Associates, Ltd. CONSULTING ENGINEERS**

Professional Consulting Services for

- Highways ► Bridges ► Airports
- Surveys ► Construction Services
- Environmental Engineering ► Analytical Lab

1237 Dublin Road  
Columbus, Ohio 43215  
(614) 486-4383 • FAX (614) 486-4387

## *The Central Ohio Section Supports ASHE*

### **Burgess & Niple, Limited**

5085 Reed Road  
Columbus, OH 43220  
614 459-2050 ■ Fax 614 451-1385

Ohio Offices in:  
Akron ■ Columbus ■ Cincinnati ■ Painesville

**B U R G E S S  
& N I P L E**

E N G I N E E R S  
A R C H I T E C T S

**CEA**

9 0 1 5

Antares Avenue  
Columbus, Ohio

4 3 2 4 0

Tel 614.433.9015

Fax 614.433.9513

**CIVIL ENGINEERING**

**ASSOCIATES**



## OFFICERS 1993-1994

Roland A. Nesslinger, P.E. ....President  
 Raymond Petrucci, P.E. ....1st Vice President  
 Thomas J. Haslett, P.E. ....2nd Vice President  
 Albert W. Kozel, Jr., P.E. ....Past President  
 Terence D. Conner, P.E. ....Secretary  
 Robert E. Yeager, R.S. ....Treasurer

## DIRECTORS

3 year      Read M. Bachman  
               Bruce G. Brandstetter  
               James W. Charles, P.E.  
               Pasquale A. Dougherty  
               Robert E. Pearson, P.E.  
               Patrick M. Welsh

2 years      David Greenwood, P.E.  
               Lawrence O. Opalisky, P.E.  
               John Ralston, Jr., P.E.  
               Lisle E. Williams, P.E.

1 years      Frank S. Lopez, Jr.  
               Michael R. Martin, P.E.  
               Robert M. Peda, P.E.

Return Address

## THE ASHE SCANNER

Al Kozel, Managing Editor  
 339 Blvd. of the Allies  
 Pittsburgh, PA 15222

Bulk Rate  
 U.S. Postage  
**PAID**  
 Pittsburgh, PA  
 Permit No. #282

# LITTLE CRACKS MEAN THE START OF SOMETHING BIG!

On a highway, airport runway or parking lot, small cracks can often go unnoticed. Early detection with PASCO high technology pavement management surveys provides information which can prevent little cracks from becoming expensive problems.

Find out how well we can serve you with pavement management surveys or pavement data analysis. Call or write today.



## PASCO USA Inc.

4913 Gettysburg Road  
 Mechanicsburg, PA 17055  
 800-445-4789  
 FAX 717-691-8211

## Membership

Altoona.....	170
Carolina Triangle.....	182
Central Florida.....	228
Central Ohio.....	145
Chesapeake.....	84
Clearfield.....	92
Cuyahoga Valley.....	121
Delaware Valley.....	365
East Penn.....	127
First State.....	87
Franklin.....	232
Harrisburg.....	324
Lake Erie.....	101
Mid Allegheny.....	47
N. Central NJ.....	72
N. Central WV.....	29
N.E. Penn.....	103
Northwest Ohio.....	58
Old Dominion.....	55
Pittsburgh.....	418
Potomac.....	74
S.W. Penn.....	135
Southern NJ.....	97
Triko Valley.....	95
Western Reserve.....	53
Williamsport.....	155
Total.....	3,649

PROFESSIONAL STATUS	= 49%
DEPARTMENT OF TRANS	= 28%
CONSULTANT	= 43%
CONTRACTOR	= 16%
OTHER	= 13%

### The Lytle Corporation

### Lytle, Matulich & Associates, Inc.

Human Resource Consultants  
 Drug-Free Workplace Act • Employee Assistance Programs  
 Drug Testing Programs • Supervisor Trainings  
 Stress Management Presentations

1-800-327-7713

The Lytle Corporation  
 Hollidaysburg, PA  
 Steven E. Lytle  
 President

Lytle, Matulich & Associates  
 Lakeland, FL  
 Matthew A. Matulich  
 President



### Urban Engineers, Inc.

- Transportation
- Structural
- Airports
- Construction Management
- Mechanical
- Electrical
- Port Facilities

300 North 3rd Street Philadelphia, PA (215) 922-8080

Pennsauken, NJ (609) 663-5550      Erie, PA (814) 453-5702      Buffalo, NY (716) 856-0350



### Whitney Bailey Cox Magnani

- Highways
- Bridges
- Landscape Architecture
- Traffic Engineering
- Inspection/Surveys
- Hydraulics/Hydrology

Consulting Engineers  
 4909 Louise Drive,  
 Suite 106  
 Mechanicsburg,  
 Pennsylvania 17055  
 717-790-9839