

# SCANNER

NEWSLETTER OF THE AMERICAN SOCIETY OF  
HIGHWAY ENGINEERS



July - 1992 - 3

## President's Message



**Albert W. Kozel, P.E.**

*ASHE 1992-93, National President*

As a member of ASHE the honor of serving as National President is very gratifying and far exceeds any of my expectations since I signed my application form more than 25 years ago. The early years as a member of the Pittsburgh Section set the stage for my active role in the Society and the involvement in this highway association where membership is available to all participants in the diversified industry. As a member of the National Board of Directors since 1986, I have been associated with members of ASHE who are committed to the Society and the highway industry. The leadership exhibited by the past presidents and directors hopefully will guide me through the year.

During my acceptance speech at the National Convention in Columbus, Ohio I briefly reviewed several areas which present a challenge to our Society. The Long Range Plan which was adopted for the 3-year period of 1989-1992 had set the goals for the Society and provide the direction for the National Board and the membership. The Plan will be updated to address the goals for the next 3 year period and include specific objectives to meet the challenges.

The greatest challenge to our Society is to expand our association across the nation and provide the opportunity for all individuals in the highway industry to be a member of ASHE. Our present 3,400 members is only a small percentage of the total industry. As I stated, the expansion has been perceived to be a problem due to our past approach and procedures dealing with a limited geographical area. I clearly attempted to express that expansion is a must for our Society and is not a problem. True examples for the need to expand are the Sections and their membership who have recently joined ASHE and are making significant contribution to the mission of the Society. The need to enhance the recognition of ASHE and the perception of the Society and its membership can be accomplished by expansion of our Society and an increase in membership to provide a strong industry association.

At the National Board Meeting held on June 12, 1992 I assigned com-

mittees and presented the goals and objectives for the year. Some specific objectives include:

- developing a 3-year budget consistent with the long range plan
- prepare guidelines for new section qualifications for expansion
- enhancing the perception and recognition of the Society
- complete the study on future conventions and Society organization
- continue the legislative activities and membership development
- continue to publish and improve the Scanner

In addition, I have requested the Board approve the publication of an updated ASHE Directory.

I am looking forward to working with the National Board, the Sections and our great membership for the upcoming year. The Society needs the support of the membership. I need each member's support for the National Board and Sections to advance to the next step in accomplishing the Mission of our Society. ■

## ASHE DIRECTORY

The 1992 Directory will be published. Sections are to submit the membership information. Individual members should verify their names and addresses with the section secretary.



# National Board News

The initial National Board Meeting was held on Friday, June 12, 1992 at Breezewood, PA. A special committee meeting was held Thursday for the updating of the Long Range Plan. The major items on the agenda and acted on at the meeting included:

1. Assignment of committees and specific goals and objectives for 1992-1993 year.

2. Passage of 1992-1993 Budget

3. Society Expansion

4. Report on 1992 Convention - Columbus, Ohio

5. Report on future Conventions

6. Updating and Adoption Procedure for 1993-1996 Long Range Plan.

7. Preparation of New ASHE Directory

- Committee chairmen for 1992-1993 assigned by National President Albert W. Kozel are:

## STANDING COMMITTEES

Budget & Auditing:

Roland A. Nesslinger, P.E.  
(614-459-2050)

Constitution & By-Laws:

Benjamin D. Rocuskie, P.E.  
(717-757-2600)

Ethics & Practices:

Lawrence P. Opalisky, P.E.  
(814-765-1040)

New Sections:

Raymond A. Petrucci, P.E.  
(302-998-2117)

Nominating & Man-of-the-Year:

Samuel H. Callisto, P.E.  
(814-696-7131)

Public Relations:

James W. Charles, P.E.  
(215-922-8080)

Technical:

Pasquale A. Dougherty, P.E.  
(215-968-9300)

## SPECIAL COMMITTEES

Convention:

Roland A. Nesslinger, P.E.  
(614-459-2050)

Legislative Review:

Michael R. Martin, P.E.  
(703-2763-8700)

Long Range Planning:

Samuel H. Callisto, P.E.  
(814-696-7131)

Membership:

Thomas J. Haslett, P.E.  
(814-437-4224)

Reorganization:

Thomas G. Criswell, P.E.  
(216-375-2340)

Scanner:

Albert W. Kozel, P.E.  
(412-261-3317)

## SUB-COMMITTEES

Executive Director:

G. Michael Tiani (412-746-9100)

ASHE Directory:

James W. Charles, P.E.  
(215-922-8080)

- The New Sections Committee will consist of three separate teams to address the geographic areas for expansion of the Society. Chairman R. Petrucci will direct the expansion program and have the following committee chairmen:

**Roland N. Nesslinger**

- Vice Chairman - West

**Stephen B. Lester**

- Vice Chairman - North East

**Michael D. Martin**

- Vice Chairman - South

**Michael J. Suich**

- Advisory Member

Chairman Petrucci presented a report on the expansion stating the formation of the Orlando, FL. group is progressing and possibly will be the next state to have a Section. Target areas for future expansion are South Caroling and Georgia in the South, Indiana and Illinois in the West, and

New York (Albany) in the North East.

- The National Board expressed their sincere appreciation to the Central Ohio Section for the outstanding and successful National Convention in Columbus, Ohio. The success was a result of the Convention Committee headed by Chairman Roland Nesslinger who had the support of the Section's Membership, Ohio Department of Transportation, Franklin County Engineering Department and other Highway Industry Companies. Chairman Nesslinger presented the Convention Report to the National Board.

- Chairman James Charles of the ASHE Directory Committee presented a plan for the preparation of a new directory by the end of 1992. Each Section will be required to verify their membership information which will be sent to the Section. Charles presented an advertising program which would provide the funds for the printing of the Directory. A limited number of full-page ads will be included. Call J. Charles at 215-922-8080 for additional information.

- Future National Conventions are scheduled for Baltimore at the Marriott - Inner Harbor on April 29 to May 7, 1993 (Thursday thru Sunday). The 1994 convention will be held in Atlantic City at Trop World on May 18 to May 21, 1994 (Wednesday thru Saturday). The 1995 Convention site has not been scheduled. Any Sections desiring to host the convention for any upcoming year should submit a request to the National Board.

- Chairman Sam Callisto presented the procedure for the updating of the 1993-1996 Long Range Plan. Each member of the committee was assigned specific tasks to evaluate the present goals and establish or redefine the goals and objectives for a special meeting of the committee in the fall of 1992.

**McTISH, KUNKEL & ASSOCIATES.**  
consulting engineers, planners & surveyors

4949 Liberty Lane  
P.O. Box 3361  
Allentown, PA 18106  
215-398-2586

RD. #3 Box 320B  
Belle Vernon, PA 15012  
412-929-2760

**HDR**

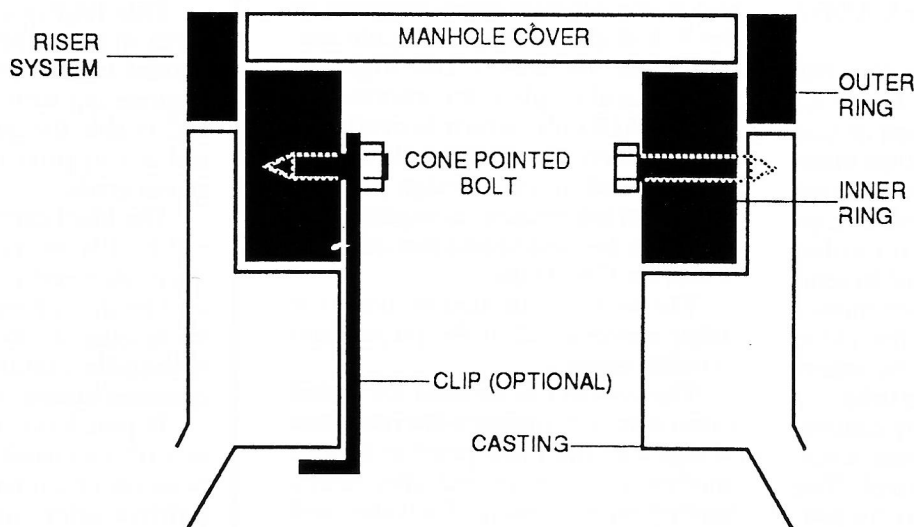
**HDR Engineering, Inc.**

**Transportation Specialists**

Bridges • Highways • Tunnels • Transit  
Planning • Railroads • Airports

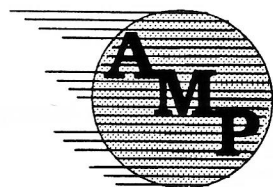
3 Gateway Center  
Pittsburgh, PA 15222  
Tel: (412) 497-6000

# YOU CAN SAVE CASTING GRADE ADJUSTMENT DOLLARS WITH THE MOST DEPENDABLE RISER SYSTEM AVAILABLE



- Complete Line of Catch Basin, Curb Inlet, Manhole, and Monument Box Risers
- Available in 1/4 Inch Height Increments
- State Approved Steel Frames and Grates
- American Made by American Craftsmen
- Domestic A-36 Steel Construction
- Fabricators of Ferrous and Non-Ferrous Products for the Highway Industry

## ANDREWS METAL PRODUCTS, INC.



745 Andrews Avenue Youngstown, Ohio 44505  
(216)744-3900 Fax(216)744-1044  
**1 - 8 0 0 - 8 3 7 - 3 9 0 1**

# Computer Scaled Video Surveys

Article Submitted by Joseph E. O'Melia, P.E., Clearfield Section

Computer Scaled Video Surveys is a system used for performing surveys of highways, bridges, mines demolition site, and the like, through the use of a computerized video system and a sophisticated multi-media CADD/VIDEO workstation.

A scaled video survey has the advantage of being able to locate all objects recorded by the system as you drive along the road, not just the limited information that a survey corp would record. Since this system captures the entire roadway on video tape, it will eliminate the need to send a crew into the field to gather missed information. It also allows the video information to be reviewed by others without having to go into the field.

If this were to be done by conventional methods it would require a survey crew and traffic control. The scaled video survey could be performed by one person without interrupting traffic to any significant degree, while driving at 15 to 30 miles per hour.

With the scaled video survey you can gather the necessary information, locating it accurately along the road from a known starting point, by driving in a specially equipped van.

The van contains a video camera and special equipment that records the location of the van, along with other information, which allows accurate measurements to be made from the video, and places the information on the video tape.

The video survey can then be

reviewed by the designers in their office using the special CADD/VIDEO workstation. The special CADD workstation allows a designer to view the video tape freeze a frame and make accurate measurements in the X, Y & Z directions, compute surface areas, volumes, locate highway features and to place the information into a CADD file, which is overlayed on the video. The CADD file can be incorporated into the design plans. If additional information is required, the video can be used to add this information to the CADD file.

The system can also be used for utility surveys and in the preparation of utility maps.

The system can be used for scaled video survey to compare the condition of highway from one point in time to another, e.g., before and after heavy hauling on a highway. The video will show the changes to the roadway and allow a designer to determine the exact amount of damage, and to estimate repair quantities.

This system has been used successfully in accident reconstruction for court cases.

A system is under development that will provide aerial mapping using these basic concepts and will be available in the future.

This system is patented for methodology and apparatus by Computer Scaled Video Survey Inc. of Kylertown, Pennsylvania, who is developing and marketing the system.

## "Help Wanted"

### Philadelphia Civil Engineering Project Manager

This highly visible position with a prominent employee-owned international consulting engineering firm in Philadelphia will enable the qualified individual an opportunity to fulfill career goals.

The ideal candidate will have a P.E., 10+ years design experience, successful civil, highway and bridge project (PENNDOT) knowledge as well as the ability to handle client interface and continue business development.

If you have a proven track record, can meet the challenges head on, and interested in a competitive salary and comprehensive benefit package, call in confidence:

1-800-937-9096

Equal Opportunity Employer M/F/H/V

### Senior Highway Engineer - BSCE;

P.E.; Minimum 6 years experience (PA DOT preferred). Send resumes: Attn. Bill Wilson, EADS, P.O. Box 1887, Altoona, PA 16603. Equal Opportunity Employer.

# Yes!

I know how important good highways are to the Commonwealth. I want to join PHIA and receive newsletters promoting highways and bridges for the economic development of Pennsylvania.

☐ Payment enclosed ☐ Bill me

Name \_\_\_\_\_

Company \_\_\_\_\_

Address \_\_\_\_\_

Questions: Call (717) 236-6021

### Dues Structure

(Check one)

- |                                                |              |
|------------------------------------------------|--------------|
| <input type="checkbox"/> Individual            | \$30 minimum |
| <input type="checkbox"/> Service organizations | 100          |
| <input type="checkbox"/> Business              | 150 to 499   |
| <input type="checkbox"/> Sustaining            |              |

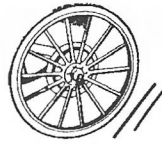


"Driving for Better Roads."

Return to:  
PA Highway Information Association  
800 North Third Street  
Harrisburg, PA 17102  
Bob Hetherington,  
Managing Director



# As the Wheel Turns...



## 1992 Public Works

### Award Winner

Howard Yerusalim, P.E., Secretary of the Pennsylvania Department of Transportation, has been selected as one of the Top Ten Public Works Leaders of the Year for 1992. The goal of the program, sponsored by the American Public Works Association, is to inspire excellence and dedication in public service by recognizing outstanding public works officials. Yerusalim, and nine other winners were chosen by a distinguished panel of judges representing the key functional areas in the field of public works.

Yerusalim has guided, piloted, and directed the Pennsylvania Department of Transportation (PennDOT) on its path to becoming one of the top-rated public works agencies in the nation and one of the best managed state agencies in Pennsylvania. One of Yerusalim's key highway program accomplishments as Secretary has been the completion of the Pennsylvania Interstate Highway system. He played a key role in administering projects to construct the final corridors of the state's vital 1,570 mi. (2,528 km) interstate network. Since 1987, more than \$1.3 billion has been invested in completing the Pennsylvania interstate system, resulting in the completion of I-476 and the 21.5 mi (34.62 km) \$500 million Blue Route in southeastern Pennsylvania, a project that had been on the drawing board for more than 60 years. Yerusalim also spearheaded the completion of Lehigh Valley's Interstate 78 and Pittsburgh's Interstate 279.

The impacts of these and other key highway projects around the state have supported economic development and economic priorities for Pennsylvania. Under Yerusalim's guidance, PennDOT has placed a strong emphasis on system preservation resulting in a record five-year, \$3.2 billion investment to meet day-to-day maintenance needs like snow removal, surface improvements, and other key preventative activities. ■

## Award Recipient

Urban Engineers, Inc., Philadelphia, recently received a Honor Award for their design of the I-95 Center City Philadelphia Ramp Completion Project from the Consulting Engineers Council of Pennsylvania.

The Annual competition for Engineering Excellence seeks to recognize "those achievements demonstrating the highest degree of merit and ingenuity in the engineering profession."

The I-95 ramp project took more than two decades to bring to fruition during which Center City Philadelphia to I-95. Also involved was the reconstruction of the eight-lane mainline (I-95 between those ramps, as well as major landscaping and urban design programs). The central challenge was the project schedule, as well as community involvement which entailed working closely with some 15 community and business organizations, and six non-profit quasi-public agencies.

The results were that design was finished on schedule in November, 1989, construction proceeded in April, 1990 and was completed the following April, 67 days ahead of schedule – at a cost of \$60 million which was within budget.

The benefits to the motoring public, when put in perspective with the Vine Expressway, mean safer and easier traveling with reduced volumes on local streets as well as improved traffic flow on I-95. ■

## Award to Delaware Valley Section Member

Leo Leonetti, a professional engineer with the Pennsylvania Department of Transportation, has been named Civil Engineer of the Year by the Philadelphia Section of the American Society of Civil Engineers and Man of the Year by the local section of ASCE.

The award recognizes Leonetti for the numerous multi-million dollar construction projects he has managed for PennDOT over the past five years as an assistant district construction engineer. These include responsibility for overseeing the construction of the award winning \$225 million Interstate 676, the \$60 million project to complete the I-95 Center City access ramps, and the \$30 million Walnut Street Bridge replacement, all located in Philadelphia.

The award was made in April in recognition of 26 years of outstanding service to the engineering profession. ■

## Harrisburg Section's Member of the Year

Robert E. Heatherington, managing director of the Pennsylvania Highway Information Association (PHIA), has been selected as "Member of the Year" by the Harrisburg Section of ASHE. He is a past chairman of the Better Roads and Transportation Council of America and past president of the Pennsylvania Public Relations Society.

Heatherington was chosen for the award for his "tireless efforts in support of ASHE and the highway industry."

A onetime newspaper and magazine editor, he was public information director of the Pennsylvania Department of Transportation for seven years and public relations director of the Pennsylvania Turnpike Commission for five years.

Heatherington has been associated with PHIA since 1980. ■

PHONE: 609-845-0529  
FAX: 609-384-1022

**EMJ McFARLAND-JOHNSON ENGINEERS, INC.**

*Consulting Engineers*

730 NORTH BROAD STREET  
NORTHWOOD PAVILION  
P.O. BOX 351  
WOODBURY, N.J. 08096

# CENTRAL OHIO SECTION

**Chartered April 24, 1984**

Central Ohio Section thanks those sponsors and patrons whose generous contributions made the 1992 ASHE National Convention a resounding success.

## SPECIAL EVENT SPONSORS

3M Company  
ESSROC Materials, Inc.  
Flexible Pavements, Inc.  
Kokosing Construction Company  
Parsons Brinckerhoff Ohio, Inc.  
Wolpert Consultants

## CONVENTION SPONSORS

Adache-Ciuni-Lynn Associates, Inc.  
Advanced Drainage Systems, Inc.  
Balke Engineers  
Burgess & Niple, Limited  
Civil Engineering Associates, Inc.  
CT Consultants, Inc.  
Finkbeiner, Pettis & Strout, Limited  
Flash Fill  
Floyd Browne Associates, Inc.  
Franklin Consultants, Inc.  
Gannett Fleming  
Geupel Construction Company, Inc.  
Greiner Engineering, Inc. - Ohio  
INTERGRAPH Corporation  
Jones-Stuckey Limited, Inc.  
A.G. Lichtenstein & Associates, Inc.  
ms consultants, inc.  
Ohio Contractors Association  
W.E. Quicksall & Associates, Inc.  
SSOE, Inc.  
Terra Testing, Inc.  
R.D. Zande & Associates,

## CONVENTION PATRONS

John and Charlotte Circle  
Dick and Joan Dickerson  
James J. Jennie  
Roland and Sylvia Nesslinger  
Robert C. Smith, P.E.  
David L. Weir, P.E.  
Kathy and Jeff Vogt  
Bayard F. Weizenecker, P.E.

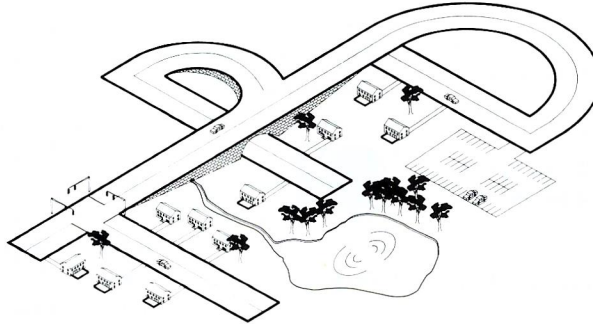
## ADVERTISING AND COPY DEADLINE FOR THE NEXT SCANNER ISSUE:

**October 15, 1992**

**MAIL TO: ASHE SCANNER**  
c/o Al Kozel  
**339 Blvd. Of The Allies**  
**Pittsburgh, PA 15222**

## Traffic Planning & Design, Inc.

**Traffic Studies  
Highway Design  
Environmental Impact Analysis**



1003 Egypt Road  
Oaks, Pennsylvania 19456  
(215) 935-5620  
Fax (215) 935-5626



**alfred benesch & company**

CONSULTING ENGINEERS

P.O. BOX A • 474 NORTH CENTRE STREET • POTTSVILLE, PA 17901  
717/622-4055 • FAX 717/622-1232  
Corporate Office: Chicago, IL

## SCANNER ADVERTISING INSERTION ORDER

From \_\_\_\_\_  
\_\_\_\_\_  
\_\_\_\_\_

**TO: ASHE SCANNER**  
**Al Kozel, Managing Editor**  
**339 Blvd. of the Allies**  
**Pgh., PA 15222**

Contact \_\_\_\_\_ Phone ( ) \_\_\_\_\_  
Authorized \_\_\_\_\_  
Signature \_\_\_\_\_

TOTAL RUNS ☐ 1x ☐ 2x ☐ 3x ☐ 4x ☐ TFN\*

Date \_\_\_\_\_ Section Affiliation \_\_\_\_\_

Ad Size ☐ Full Page ☐ Half Page ☐ Quarter Page ☐ Business Card ☐ Want Ad ☐ One Color

NOTE: Ads are black-and-white unless color is specified.  
Colors are coordinated with issue press run color

Scheduled Issue For Insertion ☐ Winter ☐ Spring ☐ Summer ☐ Fall

Rate / Insertion \$ \_\_\_\_\_ Total \$ \_\_\_\_\_

Camera-Ready Art ☐ Attached ☐ To Follow

Want Ad Text ☐ Attached

☐ Payment Enclosed  
☐ Bill Me

**Make Check Payable To ASHE**



# New Members

## CAROLINA TRIANGLE SECTION

Frederick R. Allen, P.E. - *Senior Member - Other*  
Raleigh, NC

H. Roy Currin, P.E. - *Senior Member - Consultant*  
Greensboro, NC

Ernie A. Dozzi, P.E. - *Senior Member - Consultant*  
Raleigh, NC

Richard F. Morse - *Senior Member - Consultant*  
Raleigh, NC

Jesse J. Price - *Senior Member - Consultant*  
Youngsville, NC

Janet K. Ritter - *Associate Member - DOT*  
Raleigh, NC

Sandra M. Ruff - *Senior Member - DOT*  
Raleigh, NC

Gus N. Saporilas - *Senior Member - DOT*  
Raleigh, NC

Douglas B. Saunders - *Senior Member - Consultant*  
Fuquay Varina, NC

Clifford J. Schexnayder - *Senior Member - Contractor*  
Durham, NC

James B. Sessoms, SR. - *Senior Member - Consultant*  
Cary, NC

Lisa W. Shapiro - *Member - DOT*  
Raleigh, NC

George T. Shearin - *Senior Member - DOT*  
Raleigh, NC

Richard A. Shillinglaw - *Senior Member - DOT*  
Raleigh, NC

Brian K. Skinner - *Member - Consultant*  
Raleigh, NC

Thomas S. Slater - *Senior Member - Consultant*  
Raleigh, NC

Kenneth P. Smith - *Senior Member - Consultant*  
Raleigh, NC

Donald L. Smith, Jr. - *Senior Member - DOT*  
Winston-Salem, NC

Robert A. Smith, Jr. P.E. - *Senior Member - Consultant*  
Durham, NC

Tina L. Snell - *Associate Member - DOT*  
Raleigh, NC

John W. Spires, Jr. - *Senior Member - Consultant*  
Raleigh, NC

Scott A. Stevens - *Associate Member - DOT*  
Cary, NC

Paul A. Stimpson - *Associate Member - Other*  
Winston-Salem, NC

Dwight L. Stone - *Senior Member - DOT*  
Raleigh, NC

Jesse W. Stroud - *Senior Member - DOT*  
Zebulon, NC

Carol J. Sweeney - *Senior Member - Consultant*  
Raleigh, NC

Thomas E. Tallman - *Senior Member - Consultant*  
Apex, NC

John P. Taylor - *Senior Member - DOT*  
Raleigh, NC

Marvin W. Taylor - *Senior Member - DOT*  
Durham, NC

Harry M. Thompson - *Senior Member - DOT*  
Raleigh, NC

Gregory J. Tierney - *Senior Member - Consultant*  
Apex, NC

Joseph G. Tobert - *Senior Member - DOT*  
Raleigh, NC

Monica S. Toole - *Senior Member - Consultant*  
Garner, NC

Jay J. Turner, P.E. - *Senior Member - Consultant*  
Raleigh, NC

James (Stuart) Tyler - *Senior Member - Consultant*  
Raleigh, NC

Robert M. WAGONER - *Senior Member - Consultant*  
Apex, NC

Ashley B. Vaughn - *Member - DOT*  
Angier, NC



**Producers of Quality Lightweight Aggregate**

**P.O. Box 437, Mt. Marion, N.Y. 12456**

**Tel. (914) 246-9571**

## THE SCANNER

- Published quarterly • Over 3,000 Circulation

30% are State D.O.T. Employees  
39% are Engineering Consultants  
17% are Contractors  
14% are Related Professions  
41% of the membership have a professional status.

## RATES/SIZES

	Full Page	1/2 Page	1/4 Page	Bus. Card	Want Ad
1X	\$250	\$130	\$75	\$40	\$20
2X	235	120	70		
3X	225	110	60		
4X	200	100	50		

Spot Color - Add 15%

Full Page 7 5/8 x 10"  
Half Page - 7 5/8 x 5" or  
3 13/16 x 10"  
Qtr. Page - 3 13/16 x 5"  
Bus. Card - 3 1/2 x 2"  
Want Ads - 20 Words or Less  
\*Note: Spot Color is determined by the color  
used in the issue.



**Headquarters**  
1126 Eighth Avenue  
Altoona, PA 16602  
(814) 944-5035

### SERVICES

**Water/Wastewater  
Transportation  
Architecture  
and Building Systems**

**Environmental  
Wetlands  
Surveying and Mapping  
Community Development**

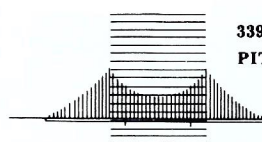
### Other Divisions:

**Neilan Engineers**  
Somerset, PA  
(814) 445-6551

**General Engineering**  
Clarion, PA  
(814) 226-8440

**EADS Ross Architects**  
Somerset, PA  
(814) 445-2470

## KOZEL ENGINEERING CO., INC.



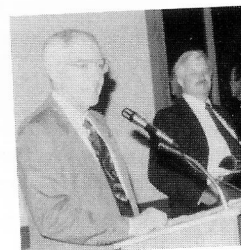
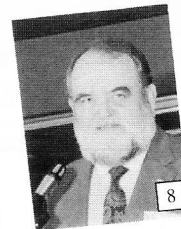
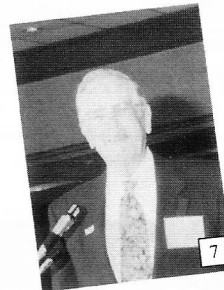
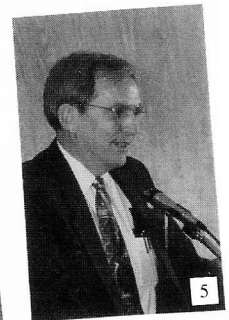
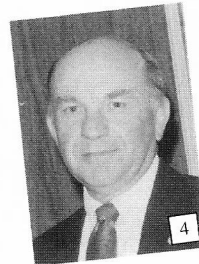
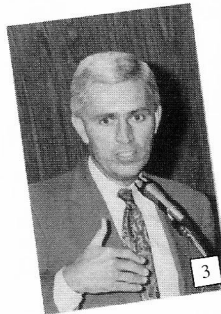
**339 BOULEVARD OF THE ALLIES  
PITTSBURGH, PENNSYLVANIA 15222  
412/261-3317**

**Civil - Structural - Environmental - Architectural - Planning  
Inspections - Design - Management - Highways - Bridges  
Buildings - Water Treatment - Municipal - Industrial - Recreation**

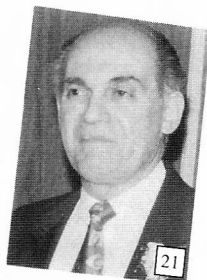
# 1992 ASHE Convention

Central Ohio Section hosted the 30th Annual ASHE National Convention at the Worthington Holiday Inn north of Columbus, Ohio. Over 300 people registered for the convention which opened on Thursday, May 14, 1992, with a golf outing and tour of the Transportation Research Center and Honda Assembly Plant. Thursday evening an ice breaker was held with a 50's theme and musical entertainment provided by the Sh-booms.

General sessions were held Friday morning. Mr. Dean Carlson, Executive Director, FHWA, and the keynote speaker, addressed the importance of "partnering" in developing the National Highway System. With reference to the Intermodal Surface Transportation Efficiency Act of 1991, he reminded the audience "the power is yours." A Mock Trial then demonstrated to the audience courtroom techniques of interest to highway engineers. Afternoon technical sessions included subsurface utility engineering, bridges, traffic management, and dispute resolution. Concurrently a spouse/guest program included a tour of the Ohio Theatre, lunch at the Hyatt Regency, shopping at the City Center Mall, a buffet breakfast, fashion show, and a hospitality room. Continental breakfasts and other activities were enjoyed in the atrium of the hotel where 25 exhibitors displayed their products and services.





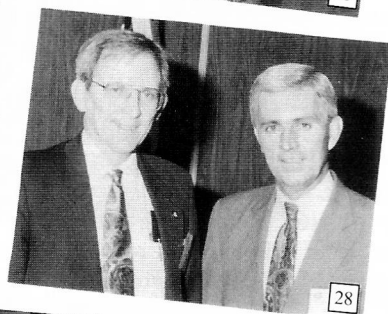
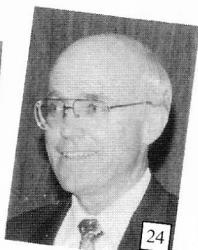


During the annual luncheon on Friday, Mr. Francis Francois was presented the "Man of the Year" award. Mr. Francois, Executive Director of the American Association of State Highway and Transportation Officials, was commended on his contribution to the National Highway Program. The 150 members and guests who attended the luncheon were given the benefit of Mr. Francois' knowledge and insight into the Washington congressional scene regarding the transportation industry.

Friday evening participants of the convention enjoyed dinner and harness racing at Scioto Downs. Saturday afternoon was spent at AmeriFlora, the International Floral Exposition held in conjunction with the Quincentennial Celebration of Christopher Columbus' Discovery of America. Bus transportation was provided from the hotel to both the race track and AmeriFlora.

Approximately 166 members and guests attended the annual reception, banquet, and dessert buffet. The 1992-1993 National Officers were installed during a brief ceremony. President Al Kozel presented his goals for the society for the upcoming year.

The members of ASHE wish to thank the Central Ohio Section for a very successful National Convention. Convention Chairman, Roland Nesslinger, his committee members and all the members of the Host Section deserve special recognition for an outstanding and successful convention.



*\*See next page for description of photographs.*

## Photo Spread Captions

(Continued from previous page)

1. Registration Desk
2. Passing the President's Gavel - Al Kozel and Sam Callisto
3. ODOT Director - Jerry Wray
4. ASHE National Secretary - Terry Conner
5. FHWA Executive Director - E. Dean Carlson
6. FHWA Division Administrator - Fred Hempel
7. County Engineers Association President - John Circle
8. Man of the Year Recipient, and Executive Director, American Association of State Highway and Transportation Officials - Francis Francois
9. Columbus City Service Director - Joe Ridgeway
10. Saturday evening banquet
11. Saturday evening dance
12. Fashion show model
13. FHWA Division Administrator - Fred Hempel
14. Winner of the All-Ohio Basket - Central Ohio Section President Jim Gabriel and Lisle Williams
15. Fashion show breakfast
16. Head table - Friday luncheon
17. Big band dance band
18. Models at Spouses' Fashion Show
19. Saturday morning General Session - Moderator: C. Clark Street and panelists, Subject: Advocacy, a.k.a., lobbying
20. Hotel lobby and ASHE Section banners
21. ASHE Past National President - Sam Callisto
22. ASHE National President - Al Kozel
23. Past ODOT Director - David Weir
24. ASHE National Vice President and Convention Chairman - Roland Nesslinger
25. Winner of the Parsons Brickerhoff Award and Central Ohio Section President - Jim Gabriel
26. ASHE National Treasurer - Bob Yeager
27. ODOT Director - Jerry Wray; ODOT Deputy Director, Executive Management - Nancy Hall
28. FHWA - E. Dean Carlson; ODOT - Jerry Wray
29. Saturday evening banquet
30. Spouses' Breakfast and Fashion Show
31. FHWA Administrators' Safety Award being presented to Ohio Department of Highway Safety
32. Presentation of "Name That Tune" Icebreaker Award
33. Honored Guests
34. Mock Trial: Prosecuting Attorney and Engineer Witness

## Engineering Excellence Award Winner



### VINE STREET EXPRESSWAY AWARD

L to R - Steve Lester, District Engineer (PADOT); Charles Holman, President - Michael Baker, Jr., Inc.; Leo Leonetti, PADOT Manager - Construction; Vito Genua, PADOT Manager - Design; Bob Eck, Project Manager - Michael Baker, Jr., Inc.; and Carmine Fiscina, FHWA.

Michael Baker, Jr., Inc., the consulting engineering firm that designed the 10-lane Vine Street Expressway in Philadelphia, was selected as the American Consulting Engineers Council's Grand Conceptor Award Winner at the 26th Annual Engineering Excellence Awards Ceremony at the Hyatt Regency, Washington, D.C. The top award was selected from 24 finalists after the review of 141 entries of projects throughout the nation.

The project, considered 10 years ahead of its time by experts, was one of the largest public works projects in Philadelphia history. Baker's reconstruction of Vine Street into I-676 exceeded all the multiple objectives of the 1991 Intermodal Surface Transportation Act. The project, which involved excavation to 26 feet below the center of a busy city, was a seven-year effort from planning through completion. A fast-track design and complex scheduling to maintain traffic, and the design of 17 bridges and 41 retaining walls were involved. A multitude of underground utilities were relocated, and 1.1 million cubic yards of earth in the densely populated urban site was excavated. The highway, dubbed "1.5 miles of highway heaven" by motorists, was carefully threaded through Pennsylvania's busiest inter-

section. The completed project eases travel every day for 80,000 to 100,000 vehicles. The project positively impacted mobility as well as air quality, safety, productivity and efficiency for commerce in the Philadelphia area.

ASHE congratulates the Baker Firm as the recipient of this most prestigious award and recognizes the staff of PADOT, District 6 for the successful construction of the Vine Street Expressway.

District Engineer Steve Lester, a past president of ASHE and the many members of ASHE who were involved in the design and construction of the project are to be commended for their contribution to the completion of the \$192 million project. ■

## Announcement Mark your Calendar

The 1992 Public Works Symposium "Quality of Life in Public Works" sponsored by APWA-RTAP-Pennsylvania Magazine will be held on October 13-15, 1992 at the Grantsville Holiday Inn in Grantsville, PA. Speakers will include representatives from PADOT, PENN DER, RTAP and other conservation groups. Additional information will be provided at a later date. ■



# New Members

E. Michelle Wagoner - *Member - Consultant*  
Apex, NC

Robert M. Walker - *Senior Member - Consultant*  
Raleigh, NC

Mark E. Warner, P.E. - *Senior Member - Consultant*  
Raleigh, NC

George E. Wells - *Senior Member - Consultant*  
Raleigh, NC

Julie R. Wilkins - *Senior Member - DOT*  
Raleigh, NC

William C. Wilkins, Jr. - *Senior Member - DOT*  
Pine Level, NC

Norman H. Willey - *Senior Member - Consultant*  
Raleigh, NC

Wady C. Williams - *Senior Member - DOT*  
Raleigh, NC

William E. Willis - *Senior Member - Consultant*  
Raleigh, NC

William A. Wilson, Jr. - *Senior Member - Consultant*  
Raleigh, NC

David L. Wilver - *Senior Member - Consultant*  
Clayton, NC

Joel E. Wood - *Senior Member - Consultant*  
York, SC

Howard T. Woodall, III - *Senior Member - Consultant*  
Raleigh, NC

## PITTSBURGH SECTION

Errol S. Abdulla, P.E. - *Senior - Consultant*  
Pittsburgh, PA

Antonio M. Alfonso, P.E. - *Senior - Consultant*  
Sewickley, PA

Lawrence J. Artman, II - *Associate - Consultant*  
Verona, PA

Thomas J. Baker - *Senior - Consultant*  
Aliquippa, PA

Dennis R. Baughman, P.E. - *Senior - Consultant*  
Beaver, PA

Dennis C. Bearer - *Senior - Other*  
Pittsburgh, PA

Gerald S. Bell - *Member - Contractor*  
Pittsburgh, PA

Victor E. Bertolina, P.E. - *Senior - Consultant*  
Pittsburgh, PA

John R. Besselman - *Member - Consultant*  
Pittsburgh, PA

Thomas D. Blaine - *Senior - Consultant*  
Coraopolis, PA

Joseph F. Boward, P.E. - *Senior - Consultant*  
Coraopolis, PA

Barbara D. Burtyk - *Associate - Consultant*  
New Stanton, PA

Jeffrey T. Butler - *Member - Contractor*  
Hookstown, PA

Ronald S. Capp, P.E. - *Senior - Consultant*  
Ambridge, PA

Norman C. Carper - *Member - Contractor*  
Elizabeth, PA

John D. Caruso - *Senior - Contractor*  
West Homestead, PA

Elizabeth S. Casey - *Associate - Consultant*  
Pittsburgh, PA

William N. Chapin - *Senior - Other*  
Coraopolis, PA

Alvin O. Chiesi, P.E. - *Senior - Contractor*  
Beuna Vista, PA

Jay M. Childs - *Member - Consultant*  
Pittsburgh, PA

Thomas J. Coogle - *Member - Consultant*  
Pittsburgh, PA

Stephen W. Cotts - *Member - Consultant*  
Pittsburgh, PA

Michael J. Creighton - *Senior - DOT*  
Pittsburgh, PA

Richard T. Curry, P.E. - *Senior - DOT*  
McKees Rocks, PA

Victoria Lynn DeFrank - *Associate - Other*  
Pittsburgh, PA

Paul A. Digirolamo - *Associate - Consultant*  
Allison Park, PA

Raymond K. Donley - *Member - Other*  
Wellsbury, W.V.

George C. Dorsch, P.E. - *Senior - Consultant*  
Wexford, PA

John J. Dziak - *Associate - Other*  
Coraopolis, PA

Cari S. Fetter - *Associate - Consultant*  
Glenshaw, PA

Daniel B. Flatz - *Member - Contractor*  
Bethel Park, PA

David R. Frevdenrich - *Member - Consultant*  
Ross Township, PA

Edward T. Gergerich, P.E. - *Senior Consultant*  
Pittsburgh, PA

William K. Gillespie, P.E. - *Senior - Consultant*  
Beaver Falls, PA

Jeffrey L. Giltenboth - *Senior - DOT*  
Pittsburgh, PA

Christopher J. Grieco - *Member - Consultant*  
Pittsburgh, PA

Mark J. Gross - *Senior - Contractor*  
McDonald, PA

William Gross - *Senior - DOT*  
Pittsburgh, PA

William J. Gross - *Associate - Consultant*  
Munhall, PA

Katherine F. Hainer - *Member - Consultant*  
Pittsburgh, PA

Ernest E. Hall - *Associate - Other*  
Mars, PA

John P. Havel, Jr. - *Member - Consultant*  
Pittsburgh, PA

Matthew S. Henderson - *Senior - Consultant*  
Harmony, PA

Stephen P. Janosko - *Member - Consultant*  
Pittsburgh, PA

Shobha A. Jatkar - *Associate - Consultant*  
Monroeville, PA

Albert O. Jones, P.E. - *Senior - Consultant*  
Glenshaw, PA

Paule e. Joyce - *Senior - Consultant*  
Glenshaw, PA

Brenda L. Joyce-May, P.B. - *Senior - Consultant*  
Wilksburg, PA

M. Patrick Kane, P.E. - *Senior - Consultant*  
Pittsburgh, PA

## The Lytle Corporation

Management Consultants for:

- The Drug-Free Workplace Act
- Employee Assistance Programs
- DOT and DOD Regulations for Drug Testing
- DFW Seminar Presentations

Steven E. Lytle, CEAP, President

(814) 695-1147

1407 Blair Street Village, Hollidaysburg, PA 16648

- ▲ Transportation
- ▲ Environmental Planning
- ▲ AM/FM
- ▲ Bridge Inspection
- ▲ Construction Management



Headquartered in York, PA:  
717 843 5561  
Other offices throughout the East Coast



## Urban Engineers, Inc.

- Transportation
- Mechanical
- Structural
- Electrical
- Airports
- Port Facilities
- Construction Management

300 North 3rd Street Philadelphia, PA (215) 922-8080

Pennsauken, NJ Erie, PA Buffalo, NY  
(609) 663-5550 (814) 453-5702 (716) 856-0350



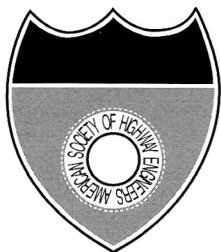
## Johnson, Mirmiran and Thompson, P.C.

2555 KINGSTON ROAD SUITE 130 YORK, PA 17402  
(717) 757-2600 FAX (717) 751-0455

PLANNERS ENGINEERS LANDSCAPE ARCHITECTS SURVEYORS

BALTIMORE, MD.

FAIRFAX, VA



**AMERICAN SOCIETY  
OF  
HIGHWAY ENGINEERS**

Incorporated 1958

**CUYAHOGA VALLEY  
SECTION**



**SSM**  
SPOTTS, STEVENS AND MCCOY, INC.  
ENGINEERS • PLANNERS • SCIENTISTS



**Whitney  
Bailey  
Cox  
Magnani**

- Highways
- Bridges
- Landscape Architecture
- Traffic Engineering
- Inspection/Surveys
- Hydraulics/Hydrology

*Consulting Engineers*  
4909 Louise Drive,  
Suite 106  
Mechanicsburg,  
Pennsylvania 17055  
717-790-9839



**QUALITY PRIDE  
TIMELY SERVICE  
EXPERIENCED PERSONNEL**

**DESIGN CONSULTANTS CO.**

400 H Southlake Boulevard  
P. O. Box 36151  
Richmond, VA 23235

**WBE/MBE**  
(804) 379-8888

## New Members

Raymond P. Karpovich - Member - Consultant  
Ambridge, Pa

Ebert J. Kinter - Senior - Consultant  
Rochester, PA

Gene F. Kinter - Senior - Consultant  
Freedom, PA

Edwin A. Kist - Senior - DOT  
Pittsburgh, PA

Bob W. Kohlmyer - Associate - Consultant  
Canonsburg, PA

Albert W. Kozel, III - Associate - Consultant  
Pittsburgh, PA

Michelle L. Kozel - Associate - Consultant  
Pittsburgh, PA

Kenneth C. Kretschman - Member - Contractor  
Butler, Pa

Thomas P. Lench, P.E. - Senior - Consultant  
Sewickley, PA

Gary S. Long, P.E. - Senior - Consultant  
Freedom, PA

Lawrence G. Lovejoy, P.B. - Senior - Consultant  
Pittsburgh, PA

Robert A. Lucas, P.L.S. - Senior - Consultant  
Glenshaw, PA

Richard A. Matisz - Senior - Consultant  
Cheswick, PA

Roger E. Maybee - Member - Consultant  
Pittsburgh, PA

Eugene A. Mazza, P.E. - Senior - Consultant  
Aliquippa, PA

Jacqueline K. Mazza - Member - Consultant  
Aliquippa, PA

John G. Matey, P.E. - Senior - Consultant  
Monroeville, Pa

Kelly R. Maurer - Associate - Consultant  
Gibsonia, PA

David J. Mikec - Senior - Consultant  
Pittsburgh, PA

Wayne O. Miner, P.E. - Senior - Consultant  
Wexford, PA

James A. Moorcroft, P.E. - Senior - Consultant  
Pittsburgh, PA

Joseph P. Moses - Senior - Other  
Pittsburgh, PA

Betty J. Murphy - Senior - Consultant  
Library, PA

Jack G. Murray, P. E. - Senior - Consultant  
Pittsburgh, PA

Harold R. McDade, Jr. - Member - Contractor  
Verona, PA

Dewey C. Olinski, P.E. - Senior - Contractor  
White Oak, PA

Jan M. Oliver - Associate - Consultant  
West Mifflin, PA

**LITTLE CRACKS MEAN  
THE START OF  
SOMETHING  
BIG!**

On a highway, airport runway or parking lot, small cracks can often go unnoticed. Early detection with PASCO high technology pavement management surveys provides information which can prevent little cracks from becoming expensive problems.

Find out how well we can serve you with pavement management surveys or pavement data analysis. Call or write today.



**PASCO USA Inc.**  
4913 Gettysburg Road  
Mechanicsburg, PA 17055  
800-445-4789  
FAX 717-691-8211



OFFICE 908-390-9773 FAX 908-390-9787 HOME 609-387-1315

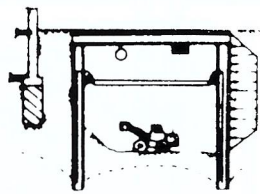
MAMECO



SOFF-CUT

**REMI company**  
*manufacturers representatives*

JAMES A. WEINHEIMER 5 JOANNA COURT  
E. BRUNSWICK, NJ 08816



*SPECIALTY:*  
ESTIMATING, DESIGN,  
CONSTRUCTION MANAGEMENT

**SHAH**  
**ASSOCIATES, P.C.**  
*CONSULTING ENGINEERS*

**JAMES J. SILIMEO, P.E.**  
Vice President

1 PENNINGTON-WASHINGTON  
CROSSING ROAD  
PENNINGTON, NEW JERSEY 08534  
(609) 737-3205

## New Members

Ruthann L. Omer, P.E. - Senior - Consultant  
Upper St. Clair, PA

Angelo Pampens, Jr. - Member - DOT  
Pittsburgh, PA

Hiroo K. Patel, P.E. - Senior - Consultant  
Pittsburgh, PA

Daniel J. Patterson, P.E. - Senior - Consultant  
Oakdale, PA 15071

Donald G. Petcovic - Senior - Consultant  
Freedom, PA

Daniel W. Piatt, P.E. - Senior - Contractor  
Washington, PA

Marie A. Pietropaolo - Associate - Contractor  
Pittsburgh, PA

David M. Powell, P.E. - Senior - Contractor  
Monroeville, PA

Sharon L. Powell - Associate - Consultant  
McKees Rocks, PA

Alan F. Prusack, P.E. - Senior - Consultant  
Glenshaw, PA

Daniel L. Rennard - Associate - Consultant  
New Castle, PA

William A. Rice - Senior - Contractor  
Library, PA

Thomas E. Riester, P.E. - Senior - Consultant  
Library, PA

Russell P. Riley, P.E. - Senior - Contractor  
Pittsburgh, PA

Harry A. Robb - Senior - Consultant  
DuBois, PA

Louis D. Rocchini, P.E. - Senior - Consultant  
Oakmont, PA

Paul A. Romito - Senior - Consultant  
New Kensington, PA

Brian L. Schull - Senior - Consultant  
Monroeville, PA

Robert M. Sciallo, P.E. - Senior - Other  
Glenshaw, PA

Gregory D. Sensabaugh - Associate - Contractor  
Pittsburgh, PA

Jeffrey A. Sestokas - Member - Consultant  
Bethel Park, PA

Donald A. Sever, P.E. - Senior - Consultant  
Delmont, PA

Harold W. Shaffer, P.E. - Senior - Consultant  
Sewickley, PA

**NOTE:** Due to space requirements, all Sections do not appear with each issue. Sections are rotated on an alphabetical basis and new members are included as each section appears. If you do not see your name or Section name it will appear in a future issue.



412/ 856-6400  
FAX 412/ 856-4970

### Full-Spectrum Engineering Consulting Services

- ▲ Civil
- ▲ Environmental
- ▲ Geotechnical
- ▲ Structural
- ▲ Mining
- ▲ Environmental Studies
- ▲ Highways and Bridges
- ▲ Traffic and Transportation
- ▲ Construction Monitoring



Pittsburgh, PA Orlando, FL Raleigh, NC Charleston, WV Mt. Laurel, NJ Ft. Wayne, IN

## OFFICERS 1992-1993

Albert W. Kozel, Jr., P.E. ....President  
 Roland A. Nesslinger, P.E. ....1st Vice President  
 Raymond Petrucci, P.E. ....2nd Vice President  
 Samuel H. Callisto, P.E. ....Past President  
 Terence D. Conner, P.E. ....Secretary  
 Robert E. Yeager, P.E. ....Treasurer

## DIRECTORS

3 year David Greenwood, P.E.  
 Thomas J. Haslett, P.E.  
 Lawrence P. Opalisky, P.E.  
 John Ralston, Jr., P.E.  
 Lisle E. Williams, P.E.  
 2 years Frank S. Lopez, Jr.  
 Michael R. Martin, P.E.  
 Benjamin D. Rocuskie, P.E.  
 1 years Gerald J. Ceccoli, PLS  
 James W. Charles, P.E.  
 Thomas G. Criswell, P.E.  
 Pasquale A. Dougherty, P.E.  
 Robert E. Pearson, P.E.

Return Address

## THE ASHE SCANNER

Al Kozel, Managing Ed.  
 339 Blvd. of the Allies  
 Pittsburgh, PA 15222

Bulk Rate  
 U.S. Postage  
**PAID**  
 Pittsburgh, PA  
 Permit No. 4000

\*Excavating

\*Pipe Lines

\*Fuel Tank Removal

\*Bank Stabilization

\*Site Preparation & Improvement

**PEGGY J. SIMPSON, P.E.**

**DOUGLAS L. SIMPSON**

(412) 326-8337

## SITE PRO, INC.

P.O. Box 239

Allenport, PA 15412

## Transportation Services

Bridge/Highway Design • Transportation Planning  
 Traffic Engineering • Mass Transit • Environmental Studies  
 Construction/Program Management

## EBASCO INFRASTRUCTURE

*A Division of Ebasco Services Incorporated*

One Oxford Valley Road • Suite 200 • 2300 Lincoln Highway East  
 Langhorne, PA 19047  
 Tel: (215) 752-0212

## Membership

Altoona .....	183
Carolina Triangle .....	197
Central Ohio .....	137
Chesapeake .....	119
Clearfield .....	94
Cuyahoga Valley .....	104
Delaware Valley .....	424
East Penn .....	131
First State .....	61
Franklin .....	206
Harrisburg .....	327
Lake Erie .....	114
Mid Allegheny .....	57
N. Central NJ .....	35
N. Central WV .....	35
N.E. Penn .....	95
Northwest Ohio .....	35
Old Dominion .....	87
Pittsburgh .....	410
Potomac .....	73
S.W. Penn .....	139
Southern NJ .....	100
Triko Valley .....	93
Western Reserve .....	53
Williamsport .....	151
<b>Total .....</b>	<b>3,460</b>

PROFESSIONAL STATUS = 41%  
 DEPARTMENT OF TRANS = 30%  
 CONSULTANT = 39%  
 CONTRACTOR = 17%  
 OTHER = 14%

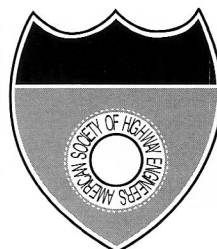
The First Name in Transportation

**PARSONS  
 BRINCKERHOFF**

•Engineers  
 •Planners  
 •Construction Managers

1500 Walnut St., 3rd Floor  
 Philadelphia, PA 19102  
 (215) 735-1457

**60+ Offices Worldwide**



**AMERICAN SOCIETY  
 OF  
 HIGHWAY ENGINEERS**

Incorporated 1958

**CLEARFIELD SECTION**