

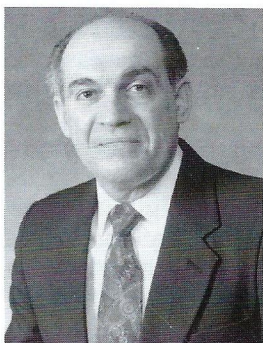
# SCANNER

NEWSLETTER OF THE AMERICAN SOCIETY OF  
HIGHWAY ENGINEERS



1-1992

## PRESIDENT'S MESSAGE



**Samuel H. Callisto, P.E.**

**ASHE 1991-92**

**National President**

Serving the membership of the American Society of Highway Engineers as President and having the opportunity to continue working with the very dedicated National officers and Directors is an

honor and a privilege for me.

In addition to our normal and very important committee work, I have instituted the following in order to move closer to accomplishing the goals and objectives of our long range plan.

- a. I have established a sub-committee made up of members from the East Penn Section (1991 convention hosts), to review convention guidelines and recommend any changes or updates they feel are necessary.
- b. An additional sub-committee was established to review

the feasibility of engaging an Executive Director to reduce the workload of our National Secretary and/or Treasurer.

Thanks to our hard working New Sections Committee I had, early in my term, the pleasure of presenting a Charter to the newly formed Northwest Ohio Section at a meeting in Toledo. Also, we are hoping to present a Charter early in 1992 for a new section in the Raleigh-Durham North Carolina Area. While we are very pleased to add to our membership and strength by bringing new sections on board, we must not forget that retention of current members is equally important and this remains a high priority to me.

Finally, don't forget that our 30th Anniversary, as well as the Quincentennial celebration of Columbus, will be celebrated at the 1992 National Convention (May 14-17) in Columbus, Ohio. The Committee is working hard to make this a great event and I hope you will attend.

Even though the Presidency of ASHE is becoming more and more challenging as our numbers grow, I am confident that, with your support, 1991-92 will be a successful term. I hope all of you enjoyed the Holidays and I wish you a Very Happy and Prosperous New Year. ▲

*The Courage to Explore.....*

*.....The Wonders of Success*





# NATIONAL BOARD NEWS

*The National Board has sent to each Section a request for opinions or responses about the future direction of the National Convention. Recognizing the continuing expansion of the society, its National recognition and reputation, the significance and challenge in organizing each annual convention takes on increasing importance. All sections are requested to respond to the request and express the opinions, of their members.*

## ASHE NATIONAL CONVENTIONS

The National Board will soon take under consideration the question of whether the ASHE Convention should be the responsibility of the National organization or remain with the local Section. Some of the issues to consider where the National Board needs the opinions and response of the membership are:

- What should the balance be between scheduled social and technical programs?
- Should speakers be statewide and/or nationally recognized experts?
- Should technical program presentations have wide geographic appeal?
- Are Sections able to find enough qualified personnel to effectively plan, schedule, and produce a National Convention?
- What program revisions can be made to increase attendance from all sections and states?
- Are Sections willing to assume the risk of more or less profit from a convention that they produce?
- Should National utilize the services of a professional organizer, e.g., full-time or part-time executive director?
- If you believe the convention should be a responsibility of National,

how soon should this be accomplished?

- Should the convention location continue to be rotated among member states?

*Please express your opinions to your Section Officers and/or transmit any written response to: Roland Nesslinger, 5085 Reed Road, Columbus, OH 43220.*

• The Ethics and Practices Committee is preparing a revised Code of Ethics for the Society. The first draft presented an introduction stating that the members of the highway industry recognize their work has a direct and vital impact on the quality of life for all people. As a result, the service provided by the various professionals, industries, and businesses requires honesty, impartiality, fairness, and equity and must be dedicated to the protection of the public health, safety and welfare. To this end, Society members should be aware of the Society's mission statement, understand its impact to their profession and use it in their daily conduct of work.

The revised version will identify: (1) Society Member Objectives; (2) Rules of Practice; and (3) Member Obligations. The committee is chaired by Dave Greenwood.

• Legislative Review Chairman Mike Martin has begun a process of tracking national progress on Transportation Funding Legislative Bills. There is an urgent need for local legislative information on status of state transportation issues and he has requested current concise summarization so that the National Board can prepare timely Legislation Positions to help guide our legislators to reflect the real Highway Transportation need. Information is needed for states served by our Society and outside the limits of our current service area. ▲

# TO SPEED HIGHWAY PROJECTS

## Pennsylvania Enacts Sizeable Highway Funding Increase

For the first time in eight years, Pennsylvania enacted a highway user fee increase that is expected to bring in \$273 million a year to expand the state's highway program.

"This is a victory for advocates of better roads," according to PHIA President Ralph Peters. "Opinion polls generated by PHIA and others showed support for fee increases at the pump when funds are used to improve roads."

Peters also thanked ASHE members who took time to call or write their legislators on the highway funding issue, but said the battlefront has moved to Washington where a Senate-House conference committee will resolve differences in legislation.

For the first time, state money was raised for Turnpike projects. State lawmakers earmarked \$38.2 million of the new highway funding package that will leverage much more on the bond market.

Meanwhile, the Federal Highway Trust Fund balance for highways has ballooned to more than \$11 billion. Of the balance, PennDOT calculates the state is owed more than \$520 million.

Though the Federal Aid Surface Transportation Act will be enacted this year, the ongoing battle over spending the money for highways or keeping it to hide the deficit will warrant continuing efforts by ASHE members. ▲

## 5-Cent per Gallon Fee Increase

Long advocated by PHIA, the state passed an increase in the oil franchise tax for road improvements that comes out to 4.9 cents a gallon. Here's how the \$273 million increase will be spent:

Road maintenance	\$114.7 million
State highway construction	46.4
Turnpike construction	38.2
Bridge repair, replacement	35.5
Local roads, bridges	32.8
Forest bridges	5.5
	\$273.1 million

Source: PennDOT



MIRAFI INC  
Geotextiles &  
Geotechnical  
Products

CLARK ENGLE

ESA  
P.O. Box 3714  
Cherry Hill, New Jersey 08034  
(609) 795-4644

Manufacturers Rep. for Eastern PA,  
Southern, N.J. and Delaware

HANCOR

# ODOT HOSTS SEMINAR FOR CHANGES, IN DESIGN STANDARDS



*Director Jerry Wray addresses the group*



*Jim Gabriel, President - ASHE Central Ohio Section*

ODOT welcomed a tremendous turnout of 305 people recently at its first major external seminar discussing the newly revised and re-issued Location and Design Manual, Volume One, Roadway Design. This revised volume, considered to be an invaluable document for design specialists, replaces many sections of the previous Location and Design Manual.

ODOT and the Central Ohio Section of the American Society of Highway Engineers sponsored the one-day seminar to review and expand on the changes for manual users.

ODOT Director Jerry Wray, Assistant Director Ronald L. Zook and A.S.H.E. Central Ohio Section President Jim Gabriel also welcomed

the participants and stressed the departments commitment to provide opportunities for sharing information of this kind with colleagues.

"The purpose of the overview was to highlight where different topics are in the manual and to point out the changes between the old and new manuals," said Don Huhman, bureau chief, Location and Design.

The seminar was conducted by knowledgeable ODOT staffers and consisted of an introduction, a general session, and four concurrent sessions covering the following technical areas: design controls, horizontal and vertical design, cross section design, geometric design, traffic maintenance, special considerations, pavement design, access control, right of way use, drive design, and pavement design.

Consultants plus county and city representatives attended the seminar.

"The seminar went very well from our perspective," said Debbie James, training administrator. "We had many positive comments and the seminar was well received. With the manual just coming out and ODOT simultaneously doing a seminar on how to use it, it was great timing."

The seminar was held in August at the Ramada University Hotel. New manuals were available at a cost to participants wishing to purchase one and are still available from Contract Sales for \$8. ▲

## Yes!

I know how important good highways are to the Commonwealth. I want to join PHIA and receive newsletters promoting highways and bridges for the economic development of Pennsylvania.

☐ Payment enclosed    ☐ Bill me

Name \_\_\_\_\_

Company \_\_\_\_\_

Address \_\_\_\_\_

Questions: Call (717) 236-6021

## Dues Structure

(Check one)

- |  |              |
|--|--------------|
| <input type="checkbox"/> Individual            | \$30 minimum |
| <input type="checkbox"/> Service organizations | 100          |
| <input type="checkbox"/> Business              | 150 to 499   |
| <input type="checkbox"/> Sustaining            |              |



**"Driving for  
Better Roads."**

Return to:

PA Highway Information Association  
800 North Third Street  
Harrisburg, PA 17102  
Bob Hetherington, Managing  
Director



# 1991-1992

## Officers

### ASHE - Southwestern PA Section



Front Row: (Left to Right) Larry Paul - 1st Vice President; Tom Brado - President; Ernest Arnold - Board of Directors; Back Row: (Left to Right) Don Herbert - 2nd Vice President; Ron Hawkins - Board of Directors; Domenic Piccolomini - Secretary; Don Shirk - Board of Directors; Absent: Greg Bednar - Treasurer

## LITTLE CRACKS MEAN THE START OF SOMETHING BIG!

On a highway, airport runway or parking lot, small cracks can often go unnoticed. Early detection with PASCO high technology pavement management surveys provides information which can prevent little cracks from becoming expensive problems.

Find out how well we can serve you with pavement management surveys or pavement data analysis. Call or write today.



**PASCO USA Inc.**

4913 Gettysburg Road  
Mechanicsburg, PA 17055  
800-445-4789  
FAX 717-691-8211

## AWARD RECIPIENTS

**American Public Works Association** has recognized two (2) ASHE members for their contribution to the public works sector. The 1991 APWA PUBLIC WORKS STATEWIDE AWARD RECIPIENTS ARE:

### PUBLIC WORKS ADMINISTRATOR OF THE YEAR

Howard Yerusalim, P.E. - Secretary of Transportation Pennsylvania Department of Transportation.

H. Yerusalim is a member of the Harrisburg Section who is highly recognized by ASHE for his continual efforts as a leader in the transportation industry and for his recognition of the people who are involved in the industry.

### SPECIAL RECOGNITION AWARD

Harry Bisco, P.E. - Former Public Works Director, City of Allentown, Pennsylvania

H. Bisco is a member of the East Penn Section and has been very active in ASHE. He has served on the National Board of Directors. His 50 years of dedicated service to advance the public works profession is widely recognized in Pennsylvania.

### 1991 Precast/Prestressed Concrete Institute Design Awards Program

1991 Precast/Prestressed, Concrete Institute Design Awards Program has named Patel Chen Associates, Incorporated as the recipient of the award for the Walnut Lane Memorial Bridge in Philadelphia, Pennsylvania. The project involved the rehabilitation of the first precast, prestressed concrete bridge constructed in the United States and was performed for the Pennsylvania Department of Transportation. I.C. Patel co-founder of the firm is a member of the East Penn Section and J. A. Kulp, Marketing Director, is a member of the Harrisburg Section. ▲

### ADVERTISING AND COPY DEADLINE FOR THE NEXT SCANNER ISSUE:

February 15, 1992

MAIL TO: ASHE SCANNER  
c/o Al Kozel

339 Blvd. Of The Allies  
Pittsburgh, PA 15222

### THE SCANNER

- Published quarterly • Over 3,000 Circulation

33% are State D.O.T. Employees  
34% are Engineering Consultants  
21% are Contractors  
12% are Related Professions  
45% of the membership have a professional status.

### RATES/SIZES

	Full Page	1/2 Page	1/4 Page	Bus. Card	Want Ad
1X	\$250	\$130	\$75	\$25	\$20
2X	235	120	70		
3X	225	110	60		
4X	200	100	50		

Spot Color - Add 15%

Full Page 7 5/8 x 10"  
Half Page - 7 5/8 x 5" or  
3 13/16 x 10"

Qtr. Page - 3 13/16 x 5"

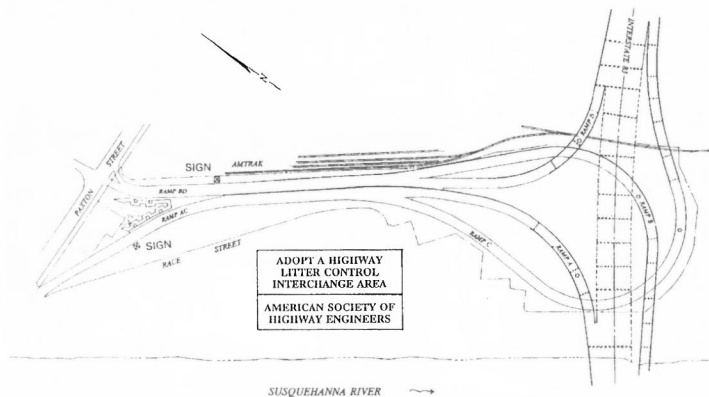
Bus. Card - 3 1/2 x 2"

Want Ads - 20 Words or Less

\*Note: Spot Color is determined by the color used in the issue.



# HARRISBURG SECTION KICKS OFF ADOPT-A-HIGHWAY PROGRAM



The Harrisburg Section made its first litter pickup in the I-83 Interchange with Front and Second Streets in Harrisburg, Pennsylvania on Saturday morning, October 12, 1991. The occasion was a great success! Seventeen members and friends of the Harrisburg Section turned out shortly before 9:00 a.m. to fill 33 litter bags in about an hour and a half. The weather cooperated fully with clear skies and a crisp, invigorating, 65° temperature. Coffee and donuts were served in a conference room at the Harrisburg Quality Inn, just beyond the interchange.

In agreeing to collect litter in the interchange four times a year for a two year period, the Harrisburg Section has joined the ranks of more than 1,500 citizen groups in Pennsylvania that demonstrate their civic pride by taking responsibility for the cleanliness of a section of highway. In appreciation of this effort, PennDOT posts two signs (one in each direction) naming the adopting group of the section of highway. PennDOT also provides trash bags, safety vests and a LITTER CREW AHEAD warning sign, and disposes of the collected litter.

For ASHE, Pennsylvania's Adopt-A-Highway Program is an excellent opportunity to perform a service to the community while gaining valuable public relations benefits. The money PennDOT saves by not having to pick up litter in this interchange and along several other sections of adopted highway can be made available for sorely needed reconstruction projects. Having our name prominently displayed on two signs in a busy interchange goes a long way in promoting ASHE, and the engineering profession in general.

Located at the east end of the I-83 bridge across the Susquehanna River, the interchange is a heavily traveled



From left: Jerry Koons, Chick Babcock, Matt Nulton, Keith Markel, Mark Lewis, Brian Evans, Jim Robenseifer, Charlie Bingham, Bob Hutton, Dan Flint, Tom Benyo, Don Englebreth, Gweneth Englebreth, Nick Siegl (kneeling). Photo by M. G. Patel.

gateway to downtown Harrisburg and the Pennsylvania Capitol. The I-83 mainline is elevated about 25 feet above ground to maintain the required vertical clearance over the railroad tracks to the east and the river to the west. The interchange's four connecting ramps are constructed partly on fill and partly on structure; crossing each other as they curve around the main infield area and climb to meet the mainline. Although not a very large facility, the Harrisburg Section's adopted interchange area is an excellent example of efficient highway design in an urban setting, and an appropriate site for a sign naming the American Society of Highway Engineers. ▲

## Charter Member of Harrisburg Section

### 1991 PHIA Man-Of-The-Year



Honoring PHIA's founder, from left, PHIA Managing Director Bob Hetherington; PHIA President Ralph Peters; Ed Parkinson, PHIA's first president; Guy Gunn, PHIA's founder and 1991 man of the Year and Henry Harral, former state secretary of highways. Gunn is a charter member of the Harrisburg Section of ASHE.

CONTRACTORS & CONSULTANTS  
GUNNED CONCRETE & REFRACTORIES • GROUTING

**EASTERN GUNITE COMPANY, INC.**

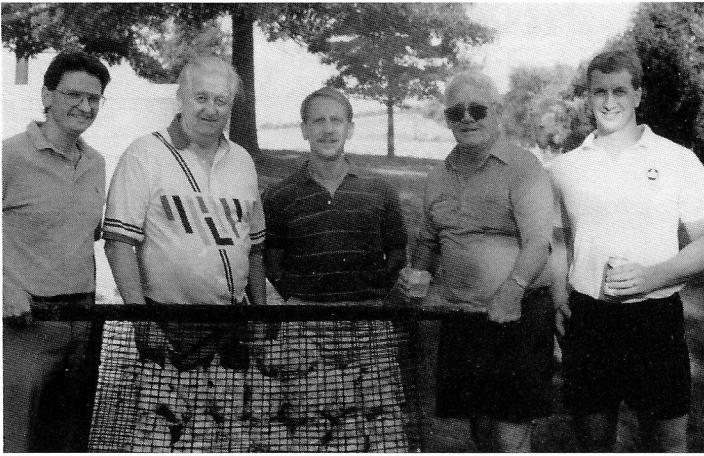
P.O. BOX B • EXTON • PENNSYLVANIA 19341

**WALTER L. SCOTT**  
PRESIDENT

1-800-252-5590  
1-215-552-5590  
FAX 1-215-543-9401



# Cuyahoga Valley Section Annual Picnic



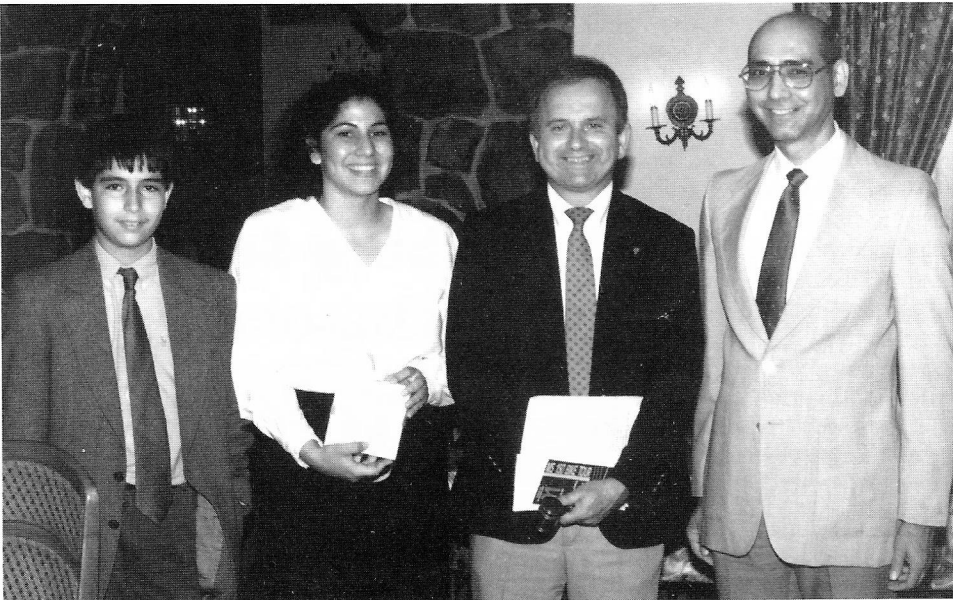
Left to right: Mike Cleary, Tom Criswel, Pat Welsh, Tom McMahon, Mike Rehfur.

The Cuyahoga valley Section held its first annual Picnic held at Mt. Pleasant Farm. The Officers and Directors hosted the event and served over 25 members and guests. Tom McMahon, Section Director was the Chief Cook with assistance from his committee, Pat Welsh, 1st Vice President, Rich Jurocco, Director, Mike Cleary, Secretary and members Don Bair and Mike Rehfur. The Chief Cook and committee really out did themselves by preparing an excellent



meal consisting of fresh plucked chicken cooked over an open hearth fire, fresh picked sweet corn on the cob, green salad, topped off with Grandma's home made bread and pies. Refreshment were served before and after the meal, everyone had a fun and relaxing time. A special thanks to Mr. Don Bair, who arranged for the use of the facilities at Mt. Pleasant farm. ▲

## Pareen S. Dhalla, Scholarship Recipient



Pareen S. Dhalla shown with her father, brother and Tom Brado, President of Southwestern PA Section

Pareen S. Dhalla, a Latrobe High School Senior, was presented with a Seven Hundred and Fifty Dollar (\$750.00) Engineering Scholarship by the Southwestern Pennsylvania Section of the American Society of Highway Engineers (A.S.H.E.) at a May 29, 1991 Banquet.

The scholarship, awarded annually to a student planning to pursue a college degree in Civil Engineering, is given based on a combination of academic, performance, and achievement criteria.

Ms. Dhalla ranked 11th out of a class of 314 students at Latrobe High

School, has been accepted into the Civil Engineering Program at the Massachusetts Institute of Technology and began studies in September, 1991.

This was the initial Scholarship Awarded by the Southwestern Pennsylvania Section of A.S.H.E. Applications were sent to over 50 High Schools in Southwestern Pennsylvania. ▲





# PENNSYLVANIA'S DEPARTMENT OF TRANSPORTATION UNVEIL'S NEW CONTRACT MANAGEMENT SYSTEM

PennDOT's new Contract Management System went on-line to all eleven District Offices and the Central Office in Harrisburg in 1991.

The on-line computer system will collect data when a highway project is in the design phase. From the final design, the system will generate the bid documents and project schedule. When the bid proposals are received from the Contractors, the bid data will be put into the system, and upon awarding the contract, the actual contract document will be generated by the system. The process of getting the bid and contract papers prepared can be very expensive and time consuming when done manually, but PennDOT's new system will do much more than just generate these documents from a computer. After the contract is created, the contract schedule is tracked, work orders are posted during the life of the contract, and it is into the Contract Management System that estimates for payment are entered, which starts the actual payment process for the Contractor.

"The new Contract Management System will reduce the cost of construction engineering while maintaining project control. But the big payback to the highway users is that the dollars saved will be able to go into the building and maintenance of the State highway system", according to Bill Moyer, P.E., Chief Engineer for PennDOT.

Currently PennDOT uses a computer system that was developed ten years ago to manage contracts. That system used the best technology available at the time. Over the years new ideas on how the system could better serve the Department were collected from the District Offices, the Central Office, and the Contractors. The new Contract Management System will incorporate most of these ideas, and take advantage of the vast improvements that have taken place in computer technology over the last ten years.

Sam Callisto, P.E., PennDOT's Project Administrator for the New Contract Management System for the past three years, and President for ASHE, said, "We took a national survey of contract and project management systems, and determined that when we turn on the PennDOT Contract Management System we will

have the most advanced computer based Contract Management System in the nation".

The new Contract Management System has gone through six months of testing and quality control. Sam Callisto went on to say that, "The key to the success of this project, and the project is on schedule and on budget, has been the cooperation of a wide range of people involved. From PennDOT's Bureau of Information Systems, McDonnell Douglas the computer consultants on the project, the Central Office staff, the participation of all 11 Districts, as well as contractors, and contractor organizations. Without the input and support of all these groups working as a team, we would have had a difficult time in accomplishing what we have, a modern contract management system to assist the Department in facing the highway needs of Pennsylvania into the 21<sup>st</sup> century".

## Contractors Benefit

Of particular interest to Contractors will be the changes in the format of the Bid Documents. Most noticeable will be the Index at the end of the bid document. The Index will give the page number for all major items in the bid, including Special Provisions. Another format change in the Bid Document is the way the alternate items are listed. Each alternate will be listed with the "OR" designation pre-printed on the document. The Component Item Schedule will have a sharper, clearer presentation that should be easier to work with.

## New 408 Issued

A new 408 was issued the fall of 1990 taking effect in 1991. While the new Contract Management System did not require many changes to the item numbers, the one change that was made was to reduce the number of nonstandard items. The new numbers were reflected in the bid documents, and for a period of about four months some bids were issued which were designed under the old 408, using those specifications, and the projects that were designed with the new 408 are issued using those numbers. The new Contract Management System is able to process the contract using the appropriate 408.

The new Contract Management

System, with its built-in cross checks and edit capabilities improves the entire bid process and notification of bid results.

## Communication

The New Contract Management System, in summary, is a powerful two way communication tool between the District Offices and the Central Office. The net effect will be to speed the flow of data between these offices and increase the accuracy of the information about a construction project without adding to the cost of the project. Contractors, PennDOT and the driving public will all benefit from the enhanced speed and accuracy of the New Contract Management System. ▲

## Mark Your Calendar

May 14-17, 1992

### Discover Columbus during the 30th ASHE Convention

*Come Early - Stay Late*

#### Day 1 (Thursday)

Golf Tournament  
Field Trip  
Ice Breaker  
Live Entertainment

#### Day 2 (Friday)

Exhibits  
Keynote Speaker  
6 Technical Sessions  
Mock Trial  
Harness Racing  
Clubhouse Dinner  
Spouses Program

#### Day 3 (Saturday)

Technical Session  
International Festival  
Annual Banquet  
18 Piece Big Band  
Spouses Program

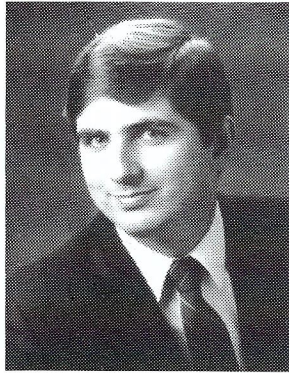
#### Day 4 (Sunday)

Continental Breakfast  
Stay awhile, explore awhile

**MORE DETAILS IN THE  
NEXT SCANNER**



## THE EADS GROUP NAMES CRAIG L. WEAVER, ASSOCIATE AND R. DALE GATES, AFFILIATE



*Craig L. Weaver*



*R. Dale Gates*

The EADS Group, a multi-disciplinary engineering/architectural firm headquartered in Altoona, recently named Craig Weaver of Somerset as an Associate, and Dale Gates of Altoona, as an Affiliate of the firm. the Neilan Engineers Division for 11 years, advancing from project engineer to project manager prior to becoming a department head in 1985. Currently, he is a Department Head and Computer Systems Manager. He is responsible for the Highway and Bridge Department, which includes structural and transportation engineers. Craig also coordinates the computerized systems of the Somerset office.

Craig Weaver attained his Master's Degree in Business Administration from Indiana University of Pennsylvania in 1984 and graduated with a Bachelor of Science degree in Civil Engineering Technology from the University of Pittsburgh at Johnstown. He is a registered Professional Engineer, current state Chairman of the Pennsylvania Society of Professional Engineers (PSPE) in Private Practice, past president of the Johnstown Chapter of PSPE and Altoona Section of the American Society of Highway

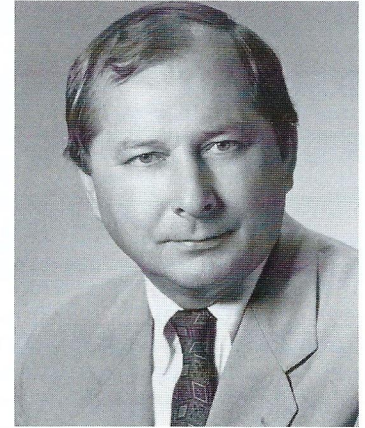
Engineers (ASHE) and co-chairman of ASHE's 1990 National Convention. In 1987, he was recognized as PSPE's "Young Engineer of the Year".

R. Dale Gates, a Structural Engineer for the past 17 years in the Bridge Section of the Transportation Department of the EADS Division in Altoona, was named an Affiliate.

Mr. Gates is a 1974 Bachelor of Science graduate from the Capitol Campus of Penn State University (PSU) with a major in Structural Design and Building Technology and a 1972 graduate of the Altoona Campus of PSU with an Associate Degree in Mechanical Engineering Technology. Dale became registered as a Professional Engineer in 1986 and was promoted to Chief Structural Engineer in 1990. He is a native of Huntingdon County.

Dale is certified as a Bridge Safety Inspector in the Commonwealth of Pennsylvania and has a Senior Engineering Certificate from the National Institute of Certified Engineering Technicians. Dale is a member of the Central PA IBM User Group at Penn State. ▲

## Greiner Appoints Edward J. Trojan as Managing Principal For Mid-Atlantic Operations



GREINER, INC., one of the oldest full service engineering, architecture, planning and surveying firms in the United States, announced that EDWARD J. TROJAN, P.E. has been promoted to Managing Principal of its Mid-Atlantic offices. Mr. Trojan was formerly Vice President and Resident Manager of Greiner's King of Prussia, Pennsylvania office.

As Managing Principal, Trojan will be responsible for the day-to-day operations of the firms offices in Maryland, New York, Ohio, Pennsylvania, and Virginia, and the performance of 200 professional staff.

A registered Professional Engineer (1973, PA), Trojan graduated from Drexel Institute of Technology and received the Bachelor of Science degree (1969) in Civil Engineering. He received the Master of Science degree in Civil Engineering from Drexel University in 1974.

Trojan is a member of the Delaware Valley Section of the American Society of Highway Engineers, American Society of Civil Engineers, the International Bridge, Tunnel and Turnpike Association, and the Engineering Society of Baltimore. ▲



**QUALITY PRIDE  
TIMELY SERVICE  
EXPERIENCED PERSONNEL**

**DESIGN CONSULTANTS CO.**  
Engineering Drafting Services

400 H Southlake Boulevard  
P. O. Box 36151  
Richmond, VA 23235

(804) 379-8888

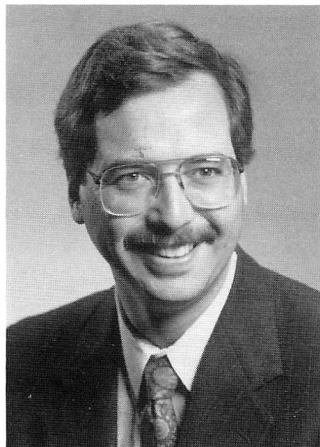




# JEFFREY D. GUZY

## NEW RESIDENT MANAGER AT GREINER, INC. KING OF PRUSSIA, PA.

Timonium, Md. (Mid-Atlantic Headquarters)



GREINER, INC., announced that JEFFREY D. GUZY, P.E. has been promoted to Resident Manager of the King of Prussia, Pennsylvania office. Mr. Guzy joined Greiner, Inc. in 1983 as a highway engineer and was promoted to Project Manager in 1988.

As Resident Manager, Guzy will oversee the day-to-day operations of the King of Prussia office, the performance of its 28 professional staff members, and its civil, structural, transportation, and land development projects.

A 1983 graduate of The Johns Hopkins University, Guzy received a Bachelor in Science degree in Engineering. He joined Greiner immediately after graduation.

A registered Professional Engineer (1988, PA), Guzy is a member of the Delaware Valley Section of the American Society of Highway Engineers and is a National Engineering Honor Society member. ▲

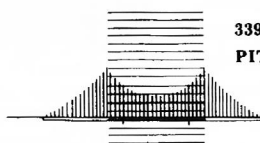
# McTISH, KUNKEL & ASSOCIATES.

consulting engineers, planners & surveyors

4949 Liberty Lane  
PO Box 3361  
Allentown, PA 18106  
215-398-2586

RD #3 Box 320B  
Belle Vernon, PA 15012  
412-929-2760

## KOZEL ENGINEERING CO., INC.



339 BOULEVARD OF THE ALLIES  
PITTSBURGH, PENNSYLVANIA 15222  
412/261-3317

Civil - Structural - Environmental - Architectural - Planning  
Inspections - Design - Management - Highways - Bridges  
Buildings - Water Treatment - Municipal - Industrial - Recreation



412/856-6400  
FAX 412/856-4970

## Full-Spectrum Engineering Consulting Services

- ▲ Civil
- ▲ Environmental
- ▲ Geotechnical
- ▲ Structural
- ▲ Mining
- ▲ Environmental Studies
- ▲ Highways and Bridges
- ▲ Traffic and Transportation
- ▲ Construction Monitoring



Pittsburgh, PA    Orlando, FL    Raleigh, NC    Charleston, WV    Mt. Laurel, NJ    Ft. Wayne, IN



# New Members

## DELAWARE VALLEY

John P. Abruzzo - *Member - Consultant*  
Turnersville, NJ

Gregg A. Bogia - *Member - Consultant*  
W. Chester, PA

Tony J. Bruno - *Senior - Other*  
Blue Bell, PA

Ronald L. Burnheimer - *Senior - Consultant*  
Norristown, PA

Michael J. Carragher - *Senior - Consultant*  
Lindenwold, NJ

Rudolph J. Chaloupka, P.E. - *Senior - Consultant*  
Browns Mills, NJ

Mark D. Cipollini, P.E. - *Senior - Consultant*  
Malvern, PA

Janet B. Cunningham, P.E. - *Senior - Consultant*  
Ardmore, PA

Evan P. Detrick, P.E. - *Senior - Consultant*  
Perkasie, PA

Cleve N. DeVauh, P.E. - *Senior - Consultant*  
Malvern, PA

Thomas J. Deysher - *Member - Other*  
Norristown, PA

Cosmo D. DiLiegro - *Senior - Consultant*  
Warminster, PA

Anthony F. DiVirgilio, P.E. - *Senior - Consultant*  
Aston, PA

Elaine Elbich - *Associate - DOT*  
St. Davids, PA

William D. Emery, P.E. - *Senior - Consultant*  
Douglassville, PA

Joseph M. Estock, P.E. - *Senior - Consultant*  
Bridgeport, PA

Edward C. Festor - *Associate - DOT*  
Pottstown, PA

Robert S. Field, P.E. - *Senior - Contractor*  
Landenberg, PA

Vito A. Genua, P.E. - *Senior - DOT*  
West Chester, PA

Edward E. Gilvey, R.E. - *Senior - Consultant*  
Pottstown, PA

Timothy J. Gunner - *Associate - Consultant*  
Philadelphia, PA

Scott B. Haines - *Senior - Contractor*  
Pennsbury, PA

Thomas A. Hamilton - *Member - Consultant*  
Philadelphia, PA

Michael J. Hearn - *Member - Consultant*  
Philadelphia, PA

Bradford R. Hollingsworth, P.E. - *Senior - consultant*  
Ft. Washington, PA

Lloyd S. Hughes, P.E. - *Senior - Other*  
Flourtown, PA

Troy T. Illig - *Member - Consultant*  
Philadelphia, PA

William Kalkbrenner, P.E. - *Senior - Consultant*  
Abington, PA

John R. Kibblehouse, Jr. - *Senior - Contractor*  
Zieglerville, PA

James D. Leasure, P.E. - *Senior - Consultant*  
Philadelphia, PA

Ester M. McGinnis - *Member - DOT*  
St. Davids, PA

Bernard B. McGowen - *Senior - DOT*  
Philadelphia, PA

Gregory E. Mester, P.E. - *Senior - Consultant*  
Jamison, PA

James L. Morrison, P.E. - *Senior - Consultant*  
W. Trenton, NJ

Jeffrey A. Nercesian - *Associate - Consultant*  
Chester Springs, PA

Thomas L. O'Connor - *Member - Consultant*  
Boyertown, PA

Girish C. Patel - *Senior - Consultant*  
Elkinspark, PA

Joseph S. Petchkofski, P.E. - *Senior - DOT*  
Aston, PA

Thomas R. Petzold - *Associate - Consultant*  
Wall, NJ

Dilip K. Radadia, P.E. - *Senior - Consultant*  
Lindenwold, NJ

Kenneth R. Reber, Jr. P.E. - *Senior - consultant*  
Pottstown, PA

David Redash, P.E. - *Senior - Consultant*  
St. Davids, PA

Jack Regan - *Associate - Other*  
Philadelphia, PA

Michelle L. Rose - *Associate - Consultant*  
Devon, PA

David J. Shaw - *Member - Contractor*  
Washington Crossing, PA

Robert L. Showlater, P.E. - *Senior - Consultant*  
Chalfont, PA

Curtis E. Shugars - *Senior - Consultant*  
Collegeville, PA

Marc A. Smugar - *Senior - Consultant*  
Philadelphia, PA

Joseph P. Tack, Jr. - *Senior - Consultant*  
Langhorne, PA

Kenneth M. Terpin - *Senior - Consultant*  
Philadelphia, PA

David A. Tomko - *Associate - Consultant*  
Royersford, PA

John M. Vitillo, P.E. - *Senior - Consultant*  
Douglasville, PA

John Zarsky - *Associate - Consultant*  
Phoenixville, PA

## EAST PENN

Marie A. Ball - *Associate - DOT*  
Allentown, PA

Kenneth L. Fulmer - *Senior - Consultant*  
Fleetwood, PA

Robert B. Ludgate, P.E. - *Senior - Consultant*  
Reading, PA

Richard L. McIntyre - *Senior - Consultant*  
Bethlehem, PA

Edward Pfenninger - *Member - Consultant*  
Macungie, PA

Mark S. Steidinger - *Member - Consultant*  
Germansville, PA

Victor I. Warnquist, P.E. - *Senior - Consultant*  
Pottstown, PA

Thomas C. White - *Senior - Other*  
Allentown, PA

George W. Zuurbier, P.E. - *Senior - Consultant*  
Allentown, PA

## FRANKLIN SECTION

Marshall R. Bird - *Associate - Other*  
Mars, PA

James H. Cooper - *Senior - DOT*  
Meadville, PA

Christopher A. Drda - *Member - DOT*  
Saegertown, PA

Robert A. Fromknecht, P.E. - *Senior - DOT*  
Erie, PA

Margaret J. Hawk - *Associate - DOT*  
Oil City, PA

Harry E. Hopkins, Jr. - *Senior - Contractor*  
Tionesta, PA

Ronald L. Horton - *Member - Other*  
Erie, PA

Edward F. MacDonald - *Senior - DOT*  
Ridgway, PA

Daniel P. Meszaros - *Member - Consultant*  
Edinboro, PA

Ralph P. Perrone - *Member - DOT*  
New Castle, PA

Terry A. Rush - *Senior - DOT*  
Rimersburg, PA



## Highway and Traffic Engineering

For more information, call Mark Roth at  
(215) 376-6581

Reading • Baltimore • Lehigh Valley • W. Trenton

- ▲ Transportation
- ▲ Environmental Planning
- ▲ AM/FM
- ▲ Bridge Inspection
- ▲ Construction Management



Headquartered in York, PA:  
717 843 5561  
Other offices throughout the East Coast



CONSULTING ENGINEERS

P.O. BOX A • 474 NORTH CENTRE STREET • POTTSVILLE, PA 17901  
717/622-4055 • FAX 717/622-1232  
Corporate Office: Chicago, IL

# New Members

Cindy D. Shuffstall - *Member - DOT*  
Franklin, PA  
Alan A. Speck - *Senior - Contractor*  
Meadville, PA  
Christopher M. Stotish - *Member - DOT*  
Pleasantville, PA  
James L. Strange - *Member - Contractor*  
Harrisville, PA  
Gail E. Turner - *Associate - DOT*  
Rouseville, PA  
John J. Waitkus, Jr. - *Senior - DOT*  
Franklin, PA

## WESTERN RESERVE SECTION

Frank J. Kishel - *Associate - Other*  
Youngstown, OH  
Mack D. Smith, Jr. - *Senior - Other*  
Youngstown, OH

## WILLIAMSPORT SECTION

Thomas W. Boyle - *Senior - DOT*  
Montoursville, PA  
Eric Thomas Bowen - *Associate - Other*  
Northumberland, PA  
Gregory L. Brouse - *Senior - Contractor*  
Middleburg, PA  
John Albert Coukart - *Senior - Consultant*  
Lewistown, PA  
Paul Allen Deibler - *Senior - Contractor*  
Lykens, PA  
G. Scott Edwards - *Associate - Other*  
Orangeville, PA  
Benjamin H. Eldred - *Senior - Other*  
Montoursville, PA  
Michael A. Erdley - *Associate - Other*  
Northumberland, PA  
Paul Phillip Ferdinand - *Associate - Other*  
Freeland, PA  
Anthony S. Flynn - *Member - Other*  
Middleburg, PA  
Larry L. Gehr - *Senior - DOT*  
Trout Run, PA  
Michael E. Houseknocht - *Member - Other*  
Muncy, PA  
Brian K. Hurst - *Associate - Contractor*  
Freeburg, PA  
Robert L. Hyde - *Associate - Contractor*  
Logan Station, PA  
Kenneth D. Klingerman - *Associate - DOT*  
Cogan Station, PA  
Keith Stanley Kuzio, P.E. - *Senior - DOT*  
Williamsport, PA  
Joseph E. Logue - *Associate - Contractor*  
Trout Run, PA  
Erik A. Lundberg - *Senior - DOT*  
Cogan Station, PA  
Albert Charles Mabus - *Associate - Contractor*  
Turbottville, PA  
Darwin Lander Marquette - *Associate - Other*  
Herndon, PA  
Edgar Ransom Miller, Jr. - *Senior - Contractor*  
Cogan Station, PA  
Robert B. Miller - *Associate - Contractor*  
S. Williamsport, PA  
Jeffrey C. Moyer - *Senior - Other*  
Milroy, PA  
Harry S. Odell - *Senior - DOT*  
Muncy, PA  
William Lloyd Patton - *Senior - Other*  
Winfield, PA  
Wayne Adrian Pauling - *Member - Contractor*  
Muncy, PA  
Joseph L. Reighard - *Associate - Contractor*  
Trout Run, PA  
Ginger L. Sheaffer - *Senior - Other*  
Selinsgrove, PA  
David L. Smith - *Member - Contractor*  
Mifflintown, PA  
Stephen George Wilking - *Associate - Contractor*  
Cogan Station, PA

## HARRISBURG SECTION

Joachim J. Alfieri, P.E. - *Senior - Consultant*  
Harrisburg, PA  
Charles W. Allwein, P.E. - *Senior - DOT*  
Lebanon, PA  
Charles G. Babcock, P.E. - *Senior - Consultant*  
New Cumberland, PA  
Kristin J. Case - *Associate - Consultant*  
Camp Hill, PA  
Eugene M. Chabak - *Associate - Consultant*  
Mechanicsburg, PA  
Jeffrey D. Chubb - *Member - Consultant*  
Palmyra, PA  
Joseph R. Corby, P.E. - *Senior - Consultant*  
New Cumberland, PA  
Danny A. Dawood, P.E. - *Senior - DOT*  
Mechanicsburg, PA  
Jay M. Fitzgerald, P.E. - *Senior - Consultant*  
Mechanicsburg, PA  
Mark D. Greenholt - *Member - Consultant*  
Enola, PA  
William T. Guy, P.E. - *Senior - Consultant*  
New Cumberland, PA  
Asim M. Kagaiwadi - *Member - Consultant*  
Lemoyne, PA  
Arthur G. Hoffmann, P.E. - *Senior - Consultant*  
Mechanicsburg, PA  
Raymond L. Hofsass, P.E. - *Senior - Consultant*  
Hummelstown, PA  
Richard H. Howe, P.E. - *Senior - DOT*  
Camp Hill, PA  
Charles T. Janik, P.E. - *Senior - DOT*  
Camp Hill, PA  
Andrew J. Kibler - *Associate - Consultant*  
Camp Hill, PA  
Dudley P. Lighty, P.E. - *Senior - DOT*  
Thorndale, PA  
Jack E. Lockard, P.E. - *Senior - Consultant*  
Middletown, PA  
LeRoy D. Loy, P.E. - *Senior - Consultant*  
Harrisburg, PA  
Michael D. Loy - *Senior - Consultant*  
Harrisburg, PA

George P. Milakovic - *Senior - Consultant*  
Harrisburg, PA  
Nevin L. Myers - *Associate - Consultant*  
Chambersburg, PA  
Arthur T. Nielsen, P.E. - *Senior - Consultant*  
Mechanicsburg, PA  
Edward S. Norcross - *Associate - Other*  
Scotland, PA  
Matthew A. Nulton - *Associate - Consultant*  
Shermans Dale, PA  
Abid M. Qanbari - *Member - DOT*  
Harrisburg, PA  
Brian M. Ranck - *Associate - Consultant*  
Mechanicsburg, PA  
Kenneth C. Reiner - *Senior - Consultant*  
Camp Hill, PA  
Howard A. Sellers, P.E. - *Senior - Consultant*  
Hershey, PA  
Jeffrey D. Sharp - *Associate - Other*  
Mechanicsburg, PA  
Thomas J. Simpson - *Senior - Consultant*  
Mechanicsburg, PA  
A. Keith Stanecipher, P.E. - *Senior - DOT*  
Mechanicsburg, PA  
Michael J. Sylvester - *Associate - Consultant*  
Camp Hill, PA  
Mark G. Wilson, P.E. - *Senior - Consultant*  
Lewisberry, PA

**NOTE:** Due to space requirements, all Sections do not appear with each issue. Sections are rotated on an alphabetical basis and new members are included as each section appears. If you do not see your name or Section name it will appear in a future issue.

## SCANNER ADVERTISING INSERTION ORDER

From \_\_\_\_\_  
\_\_\_\_\_  
\_\_\_\_\_

Contact \_\_\_\_\_ Phone ( ) \_\_\_\_\_  
Authorized \_\_\_\_\_  
Signature \_\_\_\_\_  
Date \_\_\_\_\_

**TO: ASHE SCANNER**  
**Al Kozel, Managing Editor**  
**339 Blvd. of the Allies**  
**Pgh., PA 15222**

TOTAL RUNS ☐ 1x ☐ 2x ☐ 3x ☐ 4x ☐ TFN\*  
\*Till Further Notice @ 4x Rate

Ad Size ☐ Full Page ☐ Half Page ☐ Quarter Page ☐ Business Card ☐ Want Ad ☐ One Color

NOTE: Ads are black-and-white unless color is specified.  
Colors are coordinated with issue press run color

Scheduled Issue For Insertion ☐ Winter ☐ Spring ☐ Summer ☐ Fall

Rate / Insertion \$ \_\_\_\_\_ Total \$ \_\_\_\_\_

Camera-Ready Art ☐ Attached ☐ To Follow

Want Ad Text ☐ Attached

☐ Payment Enclosed  
☐ Bill Me

Make Check Payable To ASHE



## OFFICERS 1990-1991

Samuel H. Callisto, P.E. .... President  
 Albert W. Kozel, Jr., P.E. .... 1st Vice President  
 Roland A. Nesslinger, P.E. .... 2nd Vice President  
 Stephen B. Lester, P.E. .... Past President  
 Terence D. Conner, P.E. .... Secretary  
 Robert E. Yeager, P.E. .... Treasurer

## DIRECTORS

3 years Frank S. Lopez, Jr.  
 Michael R. Martin, P.E.  
 Raymond A. Petrucci, P.E.  
 Benjamin D. Rocuskie, P.E.  
 2 years Gerald J. Ceccoli, PLS  
 James W. Charles, P.E.  
 Thomas G. Criswell, P.E.  
 Pasquale A. Dougherty, P.E.  
 1 year David Greenwood, P.E.  
 Thomas J. Haslett, P.E.  
 Walter Imler  
 John E. McCune, P.E.  
 Lawrence P. Opalisky, P.E.

Return Address

## THE ASHE SCANNER

Al Kozel, Managing Ed.  
 339 Blvd. of the Allies  
 Pittsburgh, PA 15222

Bulk Rate  
 U.S. Postage  
**PAID**  
 Pittsburgh, PA  
 Permit No. #282



## HDR Engineering, Inc.

Transportation Engineering  
 Bridges • Transit  
 Highways • Airports

3 Gateway Center  
 Pittsburgh, PA 15222

Lisle E. Williams, P.E., P.L.S.

Tel: (412) 281-8470



**Headquarters**  
 1126 Eighth Avenue  
 Altoona, PA 16602  
 (814) 944-5035

### SERVICES

Water/Wastewater  
 Transportation  
 Architecture  
 and Building Systems

Environmental  
 Wetlands  
 Surveying and Mapping  
 Community Development

### Other Divisions:

**Neilan Engineers**  
 Somerset, PA  
 (814) 445-6551

**General Engineering**  
 Clarion, PA  
 (814) 226-8440

**EADS Ross Architects**  
 Somerset, PA  
 (814) 445-2470

## Membership

Altoona .....	179
Central Ohio .....	137
Chesapeake .....	196
Clearfield .....	89
Cuyahoga Valley .....	110
Delaware Valley .....	446
East Penn .....	134
First State .....	88
Franklin .....	204
Harrisburg .....	330
Lake Erie .....	108
Mid Allegheny .....	55
N. Central NJ .....	35
N. Central WV .....	36
N.E. Penn .....	102
Northwest Ohio .....	29
Old Dominion .....	82
Pittsburgh .....	357
Potomac .....	77
S.W. Penn .....	149
Southern NJ .....	84
Triko Valley .....	86
Western Reserve .....	64
Williamsport .....	165
Total .....	3,342

PROFESSIONAL STATUS = 45%  
 DEPARTMENT OF TRANS = 33%  
 CONSULTANT = 34%  
 CONTRACTOR = 21%  
 OTHER = 12%



## Urban Engineers, Inc.

Civil, Mechanical, Electrical, & Structural Design  
 Traffic Engineering, Location Studies  
 Construction Management & Inspection  
 Highways • Bridges • Toll Facilities

300 North 3rd Street Philadelphia, PA (215) 922-8080

Pennsauken, NJ  
 (609) 663-5550

Erie, PA  
 (814) 453-5702

Buffalo, NY  
 (716) 856-0350

