

# THE ASHE scanner

July 1985

VOLUME XX No. 3

THE AMERICAN SOCIETY OF HIGHWAY ENGINEERS

JANUARY 1985

## President's Message



WILLIAM H.  
ALLEN, P.E.

My thanks to all members for the many offers of support for the coming year.

One primary goal is to continue the move toward expanding the technical services extended to Society members. An excellent surge in this direction was provided by the programs presented during the convention held in King of Prussia. Our Technical Committee will be chaired again this year by Matt McTish in order to provide continuity of effort. The committee is soliciting contributions of data from all members, planning to provide new and innovative material in the "Scanner" and preparing a technical "Reserve List" of speakers and data which will be available to all Sections.

Another goal is the continued expansion of the Society outward from the original nucleus. We have had inquiries and interest evidenced from many areas — including — believe it or not — Maylasia. At this time we are confining our efforts to more nearby geographical locations. Several meetings in this regard are, will be or have been conducted to progress these efforts as you read this.

As you have previously read, with expansion comes growing pains. To alleviate these pains I have appointed a new committee for Society Reorganization,

continued on page three

## ASHE MEMBERS ENJOY THE 23rd. ANNUAL CONVENTION AT VALLEY FORGE

23rd Annual Convention  
Stouffers Valley Forge Hotel  
May 16-19, 1985

Convention Theme -  
"Our History Is Only Our Beginning"  
Ice Breaker, May 16, 1985

The conventioners enjoyed a Philadelphia Block Party with authentic Block Party delicacies. Entertainment was provided by Disc Jockey Music, interrupted by an authentic presentation by the Ferko String Band. (Mummers)

### Exhibitors

On May 16 and 17, the exhibitors displayed their products and provided helpful information regarding their purpose and use. A list of exhibitors is as follows:

Aerial Data Reduction Associates, Inc.  
Atlantic Construction Fabrics, Inc.  
ARMCO, Inc.  
Cambrian Equipment Company  
Concrete Epoxy Technical Systems, Inc.  
CONTEK Construction Technology  
Dural International Corporation  
Georgetown Electric Ltd.  
HARCO Corporation  
Ingersoll-Rand Equipment Sales  
Lane Metal Products, Inc.  
Lockwood Support Services, Inc.  
Maccaferri Gabions, Inc.  
Mobile Lifts, Inc.  
OSIRIS Corporation  
Parsons-Brinckerhoff-EG, Inc.  
Penn-Cast Products, Inc.  
Pennsylvania Highway Information Assoc.  
Pneumatic & Electric Equipment Co., Inc.  
Prevailing Fringe Benefits  
Robbins Engineering Instrument Service  
Royston Laboratories, Inc.  
SIKA Corporation  
Signs of Safety  
Sur-Tech Engineering

### Annual Meeting, May 17, 9:00 a.m.

Delaware Valley Section President Pasquale (Pat) A. Dougherty offered welcoming remarks to those attending, after which the meeting was turned over to President Luff.

President Luff called the meeting to order after the Pledge of Allegiance.

Secretary Conner offered the invocation followed by a silent memorial for R. Martzall, Past President, H. Poulson, Past President and C. Hoffman, Member, all deceased this past year.

After roll call of sections, it was determined that the Pittsburgh Section will receive the convention attendance award.

President Luff then recognized and introduced all first time convention attendees.

Secretary Conner presented the Treasurers Report which reflected receipts of \$23,485.34 and disbursements of \$16,657.90 and a Total Cash Balance of \$54,407.17.

Secretary Conner presented the Membership Report which indicated a total membership of 2,272 which is an increase of 157 members since last years' convention.

Paul McConnell introduced his convention committees from the Delaware Valley Section. He stressed the importance of visiting our Exhibitors and attending the NASA Space Program this P.M.

M. Suich (New Sections) reported that Lake Erie Section was chartered May 8, 1985. They are working in the Dayton-Cincinnati area and New York State with other inquiries from Florida, Texas, etc.

Old Business - Paul McConnell asked on procedure for establishing a New Section. Luff said we hold a meeting with 15-20 people, and then present a charter.

continued on page three



### **KILLER TORNADO STRIKES, MAY 31, 1985**

In our day to day lives, probably not one of us stops to think of the fact that a disaster that causes headlines and heartaches could touch us. The Franklin Section of ASHE is sad to report that one of our members -- Michael T. Kurpe of Sharon, Pa., -- lost his life in the tornado that swept through this side of the state.

We are asking each of you to take a moment in remembrance of not only Mike, but the others who lost their lives and homes to this act of God.

The spirit of help and willingness that came forth from those with heavy equipment, building skills, and other problem solving abilities was the one bright spot in the destruction that reminded a lot of those looking at it, of a war site.





## CONVENTION

continued from page one

New Business - The officers were Nominated for the 1985-86 Fiscal year as listed  
 President, William H. Allen, P.E.  
 First Vice President, G. Michael Tiani  
 2nd Vice President, Ronald E. Springman  
 Past President, Charles E. Luff  
 Secretary, Terence D. Conner, P.E.  
 Treasurer, Robert E. Yeager, R.S.  
 Directors - 1 year:

David E. Baker  
 Michael J. Suich  
 Matthew J. McTish, P.E.

Directors - 2 years:

David B. Jones, P.E.  
 Samuel H. Callisto, P.E.  
 Edward S. Nasuti, P.E.  
 David E. Bower  
 Thomas Criswell, P.E.

Directors - 3 years:

Stephen B. Lester, P.E.  
 Frank S. Lopez, Jr.  
 Daniel V. Naranch  
 Roland A. Nesslinger, P.E.  
 Donald F. Soldatis, P.E.  
 Robert M. Slovinac, P.E.

On Motion by J. DeRoss, second by C. Sincavage, the secretary was instructed to cast a unanimous ballot electing the officers and directors as nominated.

Meeting adjourned at 9:30 a.m.

Technical Meeting, May 17, 10:00 a.m.

Computer Aided Drafting and Design - Tomorrow's Technology - TODAY.

Mr. William Hutchinson, P.E. PennDOT District 3-0 Plans Engineer.

Dr. Richard McGinnis, Director of the Center for Computer Aided Engineering and Design at Bucknell University.

Ms. Stacy J. Chatley, Auto CAD, Sales Representative Osiris Corp.

Dr. McGinnis presented overview of CADD.

Mr. Hutchinson presented Highway Drafting and Design w/CADD.

Ms. Chatley presented affordable CADD for engineers.

Annual Luncheon, May 17, Noon

The Annual Luncheon honoring Past Presidents was held in the Franklin Room. Past Presidents attending were Russell E. Horn, P.E., John P. Rutter, P.E., John H. Leapson, Jr., P.E., John F. DeRoss, Gene G. Smith, P.E., Charles J. Sincavage, P.E., J. Dixon Earley, P.E., Warren A. Miller, and Robert M. Sherr, P.E. (Honorary)

John P. Sheridan, Jr., former Commissioner of New Jersey Department of Transportation delivered the Keynote address regarding highway funding in New Jersey.

Technical Meeting, May 17, 2:00 p.m.

Dr. William Webster of the Goddard Space Center presented a slide illustrated talk on "The Industrialization of Space".

Dr. Webster received his Ph. D. at Western Reserve University, Cleveland, Ohio. He is an Astronomer and his research spans solar system bodies to the practical application at Satellite technology.

Annual Banquet, May 17, 7:30 p.m.

Master of Ceremonies, Jack Leapson, introduced Bob Roland who offered the invocation.

Following a beef tenderloin dinner, President Chuck Luff presented the Man of the Year Award to David C. Sims, P.E. Dave commented that there many people with PennDOT and his family that have enabled him to receive that award.

The featured speaker, Clifford Heath (N.S. Asphalt Paving Association) pointed to innovative methods of funding highways. In addition he felt the federal government is not providing funds for highways as rapidly as possible as evidenced by late passage of ICE.

Music for dancing was provided by the Charlie Dee Orchestra.

Golf Tournament, May 18

Annual Banquet, May 18

J. Leapson, M.C., introduced C. Sincavage (Past President) who offered the invocation.

After a delicious Surf and Turf Dinner, the Conventioneers were entertained with an address from an authentic Union Soldier.

Secretary Conner announced the Geo. K. Hart Award. The Award was won by the Central Ohio Section with a 35% increase in membership. The award will be forwarded to the Section.

Golf awards were presented after which C. Luff presented a Special Honorary Award to Pat Valentine for his outstanding work on Route 219.

Luff then presented the Presidents award to Mr. McTish for his outstanding work on the Technical Committee after which Paul McConnell, Convention Chairman, thanked and recognized all his committee persons.

J. Leapson then installed the officers and directors for the 1985-86 fiscal year. Luff offered his outgoing remarks after which Allen presented Luff with a plaque and past presidents' pin after which W. Allen offered his acceptance remarks.

The meeting was adjourned followed by music and dancing.

Brunch, May 19, 1985 Departure for home.

## PRESIDENT

continued from page one

which committee will work closely with the Constitution and By-Laws Committee. More on their findings later.

We hope to continue the steady progress the Society has made over the past 27 years and any progress this administration may accomplish can only be because of the groundwork of all past administrations. †

## Technical Briefs

### PAVEMENT RECYCLING PROCESS TESTED

A Reading Contractor, Windsor Service, opted to use a recycling paver to resurface a 3-mile section of Route 61 near Deer Lake, Pa. using a German-made Wirtgen repaver-remixer. The work was subcontracted to Remixer Contractor Co. from Austin, Texas. The state saved an estimated \$100,000 on the \$615,000 project as compared to an alternate cold milling and repaving system. The multi-unit paver which was disassembled and transported on flatbed trucks used large propane tanks to heat the surface to 220 to 300 degrees. After milling, the recycled materials was mixed with 3,000 tons of new material and reapplied at a depth of 1-3/4 inches and at a width of 12 feet. If all new material had been applied at a depth of 1-1/2 inches, 6,180 tons of material would have been required. The Southbound lanes were paved using a mixture of AC5 oil, milled material and new wearing material while the Northbound lanes were paved using milled material mixed with an additive rejuvenating agent and finally surfaced with a new 3/4 inch wearing surface.

During the two week paving period, the Wirtgen paver was observed by highway officials from US DOT and from New Jersey, New York, Maryland, Delaware and Ohio. Next spring, PennDOT's Quality Control experts are expected to re-examine the recycled section to determine how well it holds up. For more details or information on the advantages and disadvantages of this recycling system, you may call Joseph Subalusky, PennDOT District 5-0 Materials Engineer.





## Central Ohio

Ronald L. Zook, Public Relations

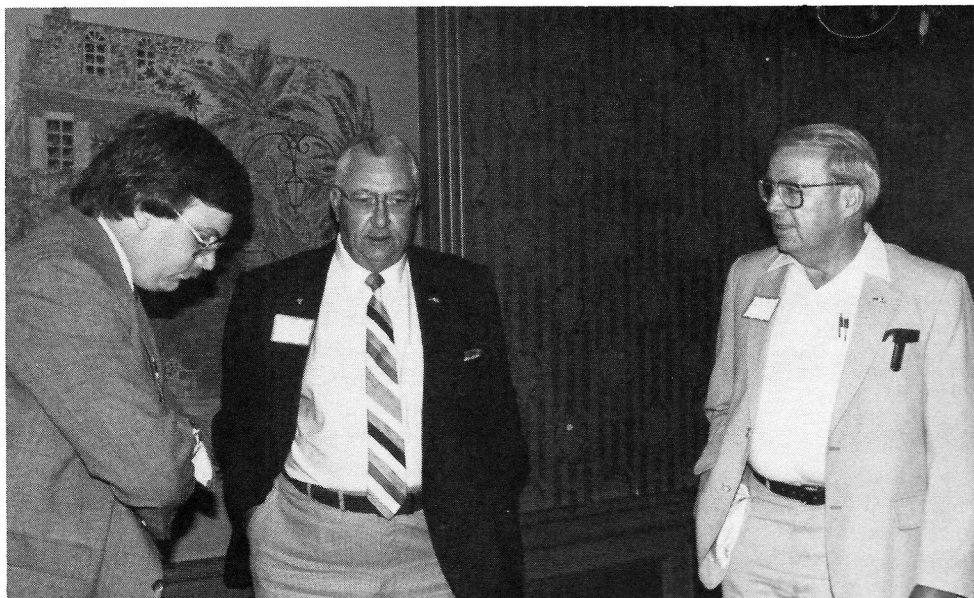
A Central Ohio Section of the American Society of Highway Engineers held its noon luncheon on May 28, 1985 at the Jai Lai Restaurant in Columbus. The program consisted of a very interesting presentation by Warren Cremean, Executive Director of the Development for Greater Columbus, concerning infrastructure maintenance.

This meeting also featured election and installation of officers for the coming year. Frank Fischer, ODOT Deputy Director at Ravenna and President of the Cuyahoga Valley Chapter of ASHE, conducted the installation of officers and they are as follows:

National Director, Roland E. Nesslinger  
President, Ronald L. Zook  
1st Vice President, Joseph A. Kindler  
2nd Vice President, Ronald Calhoun  
Secretary, James E. Gabriel  
Treasurer, David C. Phillips  
Directors, James R. Laird, Bayard F. Weizenecker, John J. Adams, Ralph Warne

Approximately 25 members and guests attended this meeting and appreciated Mr. Cremean's very informative presentation on the long range impact of maintenance requirements for the infrastructure. Mr. Fischer's able execution of the installation was impressive.

PRINTER'S NOTE : These three and the next six pictures did not have a caption for them, from the Central Ohio Section. They cover the meeting above.

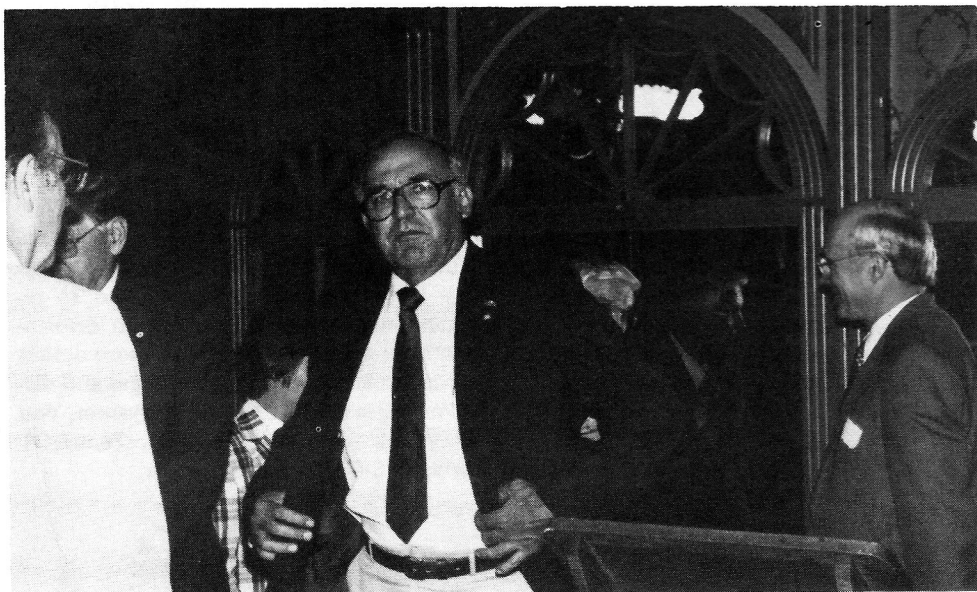


## Technical Briefs

### INTERNATIONAL BRIDGE CONFERENCE HELD IN PITTSBURGH

The Second Annual International Bridge Conference, sponsored by the Engineer's Society of Western Pennsylvania, was held at the Pittsburgh Hilton on June 17 through June 19, 1985. The keynote speaker, Lester P. Lamm, deputy administrator of FHWA, set the tempo for the conference when he indicated that most of the future work to be performed on the U.S. highway system will be re-

continued on next page





## TECHNICAL BRIEFS

continued from last page

habilitation and replacement of deficient bridges. Mr. Lamm indicated that in his opinion very little new highway construction on new alignment will be performed once the remaining gaps are closed in the Interstate System. He also urged all attendees to make a concerted effort at all political levels to ensure that sufficient funds will be made available to do the the work that lies ahead.

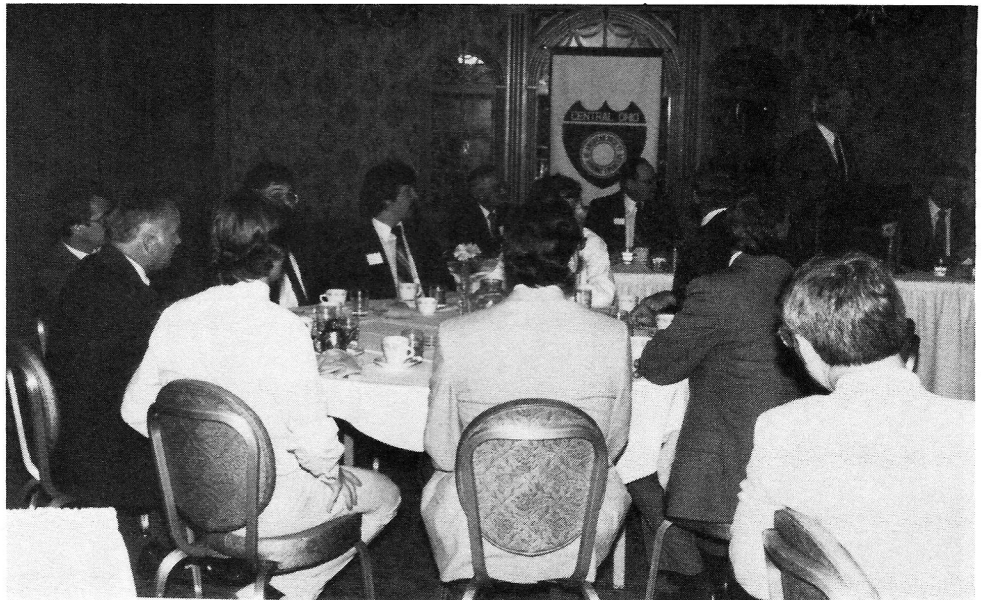
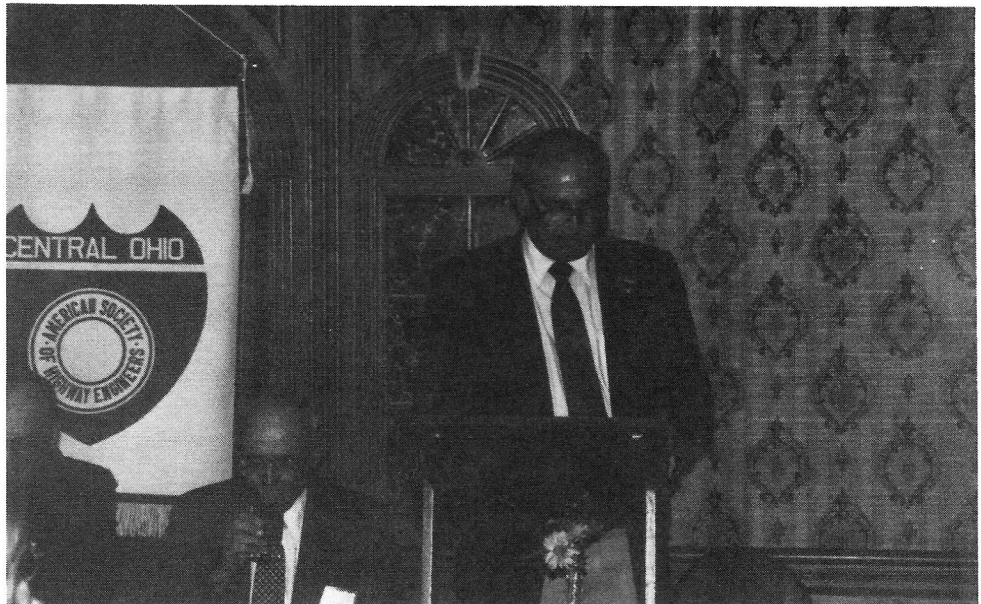
Numerous topics covered at the technical sessions included: Evaluation of Materials and Coatings, Preservation and Rehabilitation of Historic Bridges; Performance Evaluation of Rehabilitated Bridges; Programming, Financing, and Prioritization of Bridge Rehabilitation; Construction Management Practices for Rehabilitation; Experiences with Alternate Bidding; and Construction Techniques.

Confirming education certificates were given to attendees at the "CADD in the Contemporary Design Office"; "Computerized Construction Documentation of the Project Field Office", and "Inspection and Evaluation of Existing Bridges" seminars. The general consensus of opinion was that these seminars presented procedures which will have to be adopted by most design firms so they can remain highly productive at lower costs with our advance into the High-Technology era.

During their free time, conferees were treated to displays and exhibits demonstrating bridge related products and rehabilitation procedures. Boat tours featuring many of the Pittsburgh bridges and tours of the soon-to-be-opened Light Rail Transit system were also conducted.

## HIGHWAY INFRASTRUCTURE: OPPORTUNITIES FOR INNOVATION

A Specialty Conference entitled, "Highway Infrastructure: Opportunities for Innovation," sponsored by the ASCE Highway Division and the Federal Highway Administration will be held July 17, 18, 1985 at the Xerox International Center for Training and Development in Leesburg, VA, about 35 miles from the nation's capital. The conference will focus attention on research as an effective and economical means for solving many highway infrastructure problems. The conference will benefit individuals and organizations that sponsor and use research results in the highway program.





## Technical Briefs

### HIGHWAY SAFETY CONFERENCE

The ASCE Highway and Traffic Safety Committee will sponsor a specialty conference on "Effectiveness of Highway Safety Improvements" to be held at the Opryland Hotel in Nashville, Tennessee, March 24-26, 1986. The conference will focus on the current state-of-the-art in highway safety, examine existing problems and explore innovative solutions.

### PROFESSIONAL LIABILITY SEMINAR

The professional approach to Liability and Quality Control was the subject of a seminar sponsored by NSPE/PEPP, PSPE/PEPP and the AIA on May 1, 1985 at the Sheraton-Valley Forge Hotel near Philadelphia, Pa. Speakers Paul Genecki and Gerald Farquhar, Esq. focused on many subjects involving the designer, the construction inspector and those involved in writing contracts. Some of the highlights of the jam-packed session included:

- the number of claims against engineering and architectural firms has risen from about 13 in 1960 to about 37 per 100 per year.

- about 48% of bodily injury claims are for construction workers.

- greater competition for design contracts has created liability problems.

- Engineers should beware of expressed warranties, they may not be covered by their insurance policies.

- attendees were advised that they may not be covered for Pollution Abatement Projects (except wastewater and portable water treatment) after October, 1985. The speaker advised that the insurance industry is being traumatized by huge claims.

- practice alerts were also discussed concerning (1) expert witnesses (2) the use of CADD systems when programs are prepared by others, (3) the need for written records and documentation, (4) asbestos abatement, (5) quality control in the preparation of specifications, (6) supervision/inspection services, (7) construction site safety, certifications, and indemnification.

Upon completion of the Seminar, continuing education credit (CEU) was granted to those in attendance. †





## East Penn

Bart Snyder, Public Relations

Twenty four members and guests attended the regular dinner meeting of the Section held at the Lion's Head Inn on Route 309 at Orefield, Pa., on March 12, 1985.

Mr. Harold Neff, program chairman, introduced Mr. Dennis F. Campbell, Sales Manager for Schuylkill Products, Inc., of Cressona, Pa., who gave a presentation on Double Wall construction.

Doublewall is a precast retaining wall system using specially designed interlocking modules. Doublewall applications include various forms of retaining walls along highways, railroads, sound barriers, and many others.

A concrete footing along the face of the structure, and a concrete leveling pad at the rear of the structure must first be constructed to proper line and grade. The interlocking modules are then placed upon these footers to the desired heights, and finally filled with free draining material and consolidated.

Double Precast Retaining Wall System provides superior structures and is economical due to the ease with which it is erected.

The April meeting of the Section was held at Walp's Restaurant in Allentown, on April 9, 1985.

The program for the evening was presented by Mr. Robert Wellner, Vice President/Manager of the Northeastern Regional Office of Figg and Muller Engineers, Inc. He gave a very interesting and informative talk on innovative prestress concrete designs, which included Segmental and Cable Stayed Bridges.

Mr. Wellner used a slide presentation to illustrate the designs, showing the Linn

continued on next page

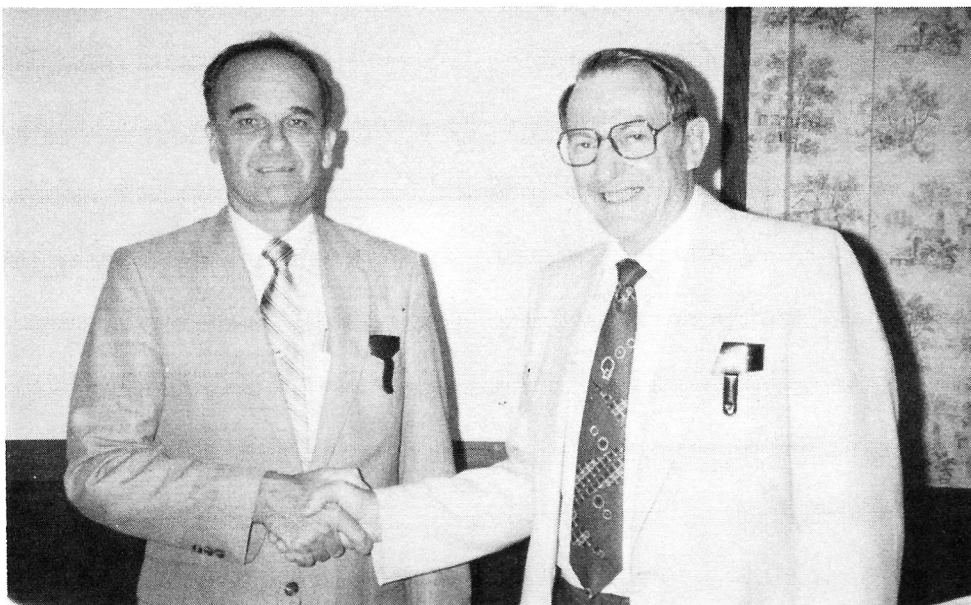
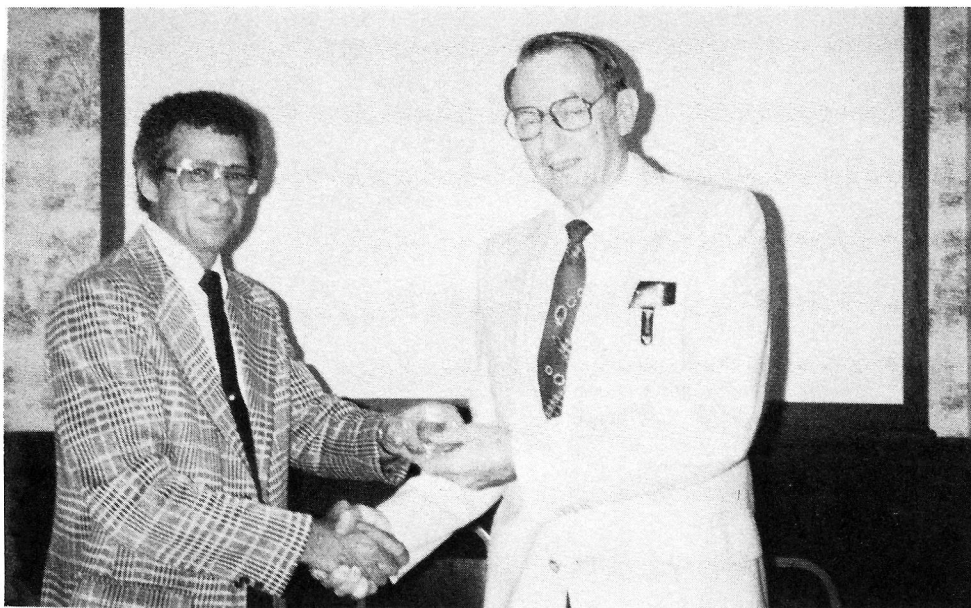
### EAST PENN SECTION

Harold Neff, right, thanking Mr. Dennis Campbell, Sales Manager of Schuylkill Products, Inc., for his program presentation at the regular dinner meeting of the East Penn Section on March 12, 1985.

Robert L. Donovan, left, thanking Mr. Robert Wellner, Vice President/Manager of Figg and Muller Engineers, Inc., for his program presentation at the regular dinner meeting of the East Penn Section on April 9, 1985.

Harold Neff, left, incoming president of the East Penn Section, presenting the Gavel Award to outgoing president Ronald S. Dmytrow at the regular dinner meeting, May 14, 1985.





Cove Viaduct in No. Carolina, the Houston Ship Channel Bridge, the Long Key Bridge and the Seven Mile Bridge in Florida and the Sunshine Skyway Bridge in Tampa, and the Wiscasset-Edgcomb Bridge in Maine.

The last meeting of the 1984-85 season of the Section was held at the Terrace Restaurant, in Walnutport, on May 14, 1985.

This was our annual business meeting, and featured the installation of our new officers. National President of ASHE, William H. Allen, was in attendance, and administered the oath of office ceremony to the new slate of officers and directors for 1985-86. The following is a list of the officers elected to serve during this period:

- President - Harold E. Neff
- 1st Vice President - Michael P. Quigney
- 2nd Vice President - Charles Jones

Secretary - Gerald Miller  
Treasurer - John D. Werner

For the third year now, the East Penn Section has presented an "Outstanding Member of the Year Award," and this year the recipient was Matthew J. McTish.

Matt has spent 29 years in Consulting Engineering, first with Swindell-Dressler in Pittsburgh, then with A. L. Wiesner Associates in Allentown and for the last 10 years as President of McTish, Kunkel, and Associates. Most of the work he has been involved in has been highways and bridges.

Matt joined ASHE almost twenty years ago, and has served the East Penn Section by holding the following offices:

- 1968-69 — 2nd Vice President
- 1969-70 — 1st Vice President
- 1970-71 — President
- 1971-72 — Immediate Past President

#### EAST PENN SECTION

Harold Neff, left, president of the East Penn Section, presenting a token of appreciation to National President William H. Allen at the regular dinner meeting, May 14, 1985.

William H. Allen, National President of ASHE, right, presenting the "Outstanding Member of the Year Award" to National Director Matthew McTish, at the regular dinner meeting on May 14, 1985.

He also served on the Board of Directors for the Pittsburgh Section 1966-67.

Additionally, Matt has served on or chaired many of our committees, most recently the nominating committee for the 1985-86 officers.

Matt is presently serving on the National Board of Directors, and is just finishing the second year of a 3-year term. He has been a very active member of the Board and with the support of the Board, he has started a major effort to make the Society more active in technical activities. As a follow-up on this activity, at the National Convention in Valley Forge on May 18, 1985, Matt received a plaque for his outstanding work and effort to date on the technical subject.

The Delaware Valley Section, who sponsored the 1985 National Convention this year on May 16-19, at the Stouffer Valley Forge Hotel, in King of Prussia, Pa., are to be highly commended for a well-planned and highly successful affair in all respects, and the accommodations at the hotel were "tops". Those members unable to attend this Convention sure missed a great time. The "Ice-Breaker" Party on Thursday evening included a presentation of the Ferko String Band. On Friday, a guided tour of Longwood Gardens, and the Dupont House, and Brandywine Museum was provided, however the affair was somewhat marred by a much-needed rain. On Saturday a bus trip to the Golden Nugget Casino in Atlantic City was filled to capacity, but very few came home a winner, although the weather was beautiful and a walk on the boardwalk was delightful.

As a matter of interest, Mrs. Bessie Todd, widow of former charter member Mike Todd, of the East Penn Section, who died several years ago, attended the Convention this year again, as she has done for the past 18 years. Bessie and Mike never missed attendance at any convention since 1967.

After 22 years of service with PennDOT, East Penn Section member John Shober retired on May 29, 1985. John

continued on next page



was Chief of Surveys for many years, and a Retirement Party was held in his honor at the Well House Restaurant in Allentown. We all wish John a long, healthy, and happy retirement. †

## North East Penn

The Delaware Valley Section is to be congratulated for a fine 1985 Convention. The mummery string band and the NASA Technical presentation were particularly high points.

The North East Penn Section was well represented at the Convention with a total of 15. If it had not been the triple count taken by the Pittsburgh Section the recognition of the proper section (ours) would have occurred.

The group from our section was broken down into two distinct parts. Let us call the first, five sane individuals, the second let us call the "Gang of 10". The latter group included the dancing Barbers (twinkle toes) who took the laurels in the soft shoe and John Kolander who took the prize for best costume. The standout of the formal group was Dave Jones, the King of Blackjack.

The "Gang of 10" who has gathered much notoriety in past conventions arrived in a single vehicle. They bring a little nostalgia and merriment to a sometime sullen gathering. The spirit of this group represents one of the aspects of what ASHE is. It is social and it is also one of the few organizations which is a mixture of consultants, contractors and transportation agencies who are all interested in highways. The strong point still remains the support of all elements for better highways through social gatherings.

The Northeast Pennsylvania Section meetings for the 1985-86 year will be held in the Scranton area on the second Tuesday from September 1985 through May 1986 except for the February meeting which is held on the second or third weekend and the May meeting which is held on the first Friday. The officers and Committee Chairman will be as follows:

President - Foster C. Cankey  
1st Vice President - John Lingle  
2nd Vice President - Nicholas I. Genovese  
Secretary - John A. Kolander  
Treasurer - James J. Lewis

### Committees

Program - John Lingle  
Annual Raffle - Nicholas I. Genovese  
Membership - John A. Kolander

Public Relations - William Lesek  
Nominations - David Dillon  
Auditing - Al Brocavish  
Technical - Angelo Rosati †

## Franklin

Lorain K. Murphy, Public Relations

As you can see from the photo of the PennDOT Maintenance Garage that used to stand in Centerville (before the tornado), it has not been "business as usual" for the people with the Franklin Section of ASHE.

We have had a few business meetings, like the one held at Forest Hills Restaurant, Tionesta. New officers were presented the membership. They included:

Roger Herzog, President  
Jack Baker, 1st Vice President  
Andy Speck, 2nd Vice President  
Jack Molke, Secretary  
Meg Warner, Recording Secretary  
Ron Witkowski, Treasurer  
Board members include Stephen Benes, one year, Jack Ricalton, 2 years and Robert Irwin, 3 years.

The second annual scholarship from the Franklin Section of ASHE has been awarded to Kraig Edward Gaston, son of Howard and Winifred Gaston. Kraig graduated from East Forest High School, Marienville, in 1984. He was valedictorian of his class in addition to handling the duties of Yearbook Editor and Varsity Club President.

Kraig will use his scholarship at the University of Detroit where he is majoring in Mechanical Engineering. During his first year in Detroit, he has worked with the Admissions Counselors phoning and hosting prospective students.

Leanne Wheeler, last year's scholarship winner, is giving Kraig a "tough act to follow". The daughter of Jack and Bonnie Molke went to Kent State last year and brought home a 3.8 grade point average in her Math Major.

### PENNDOT DEPUTY "MAN OF THE YEAR"

David C. Sims, deputy secretary of PennDOT, has received the 1985 Man of the Year Award from the American Society of Highway Engineers for his service to the transportation industry.

The award was presented to Sims at the society's 23rd annual convention in King of Prussia.

Sims has been deputy secretary for

highway administration since the creation of PennDOT in 1970. He is responsible for highway design, construction, maintenance, materials testing, traffic engineering and right of way, and the coordination of these activities with other department functions.

Sims is a registered professional engineer in Pennsylvania and Maine. He is national treasurer of American Association of Transportation Officials and past president of the Northeastern Association of State Highway and Transportation Officials, the American Society of Civil Engineers' Central Pennsylvania section and ASHE Harrisburg Section.

Also active in community affairs, Sims has served as a trustee of the Camp Hill United Methodist Church and as a member of the board of directors of the West Shore YMCA. He is a member of the Harrisburg Bridge Club. Sims and his wife, Lois, live in Camp Hill. †

### 238,000 POUND RIG SEIZED; DRIVER FINED \$46,800

A tractor-trailer loaded to nearly 3 times its allowed weight was seized and the driver fined \$46,800, after police stopped the rig, with its tires smoking, at the bottom of a mountain.

State police in Milesburg received an anonymous tip late Monday evening, July 15th, that an overloaded truck was at the Snow Shoe exit of Interstate 80 in Centre County waiting for darkness before heading out.

When the truck pulled out shortly before midnight, a trooper followed it to the Milesburg exit, stopping the truck at the bottom of Snow Shoe Mountain with all tires smoking.

The rig, carrying an industrial forge, weighed 238,150 pounds. The weight limit is 80,000 pounds.

State police filed an overweight vehicle citation against the driver David E. Tedrow, 33, of Battle Creek, Mich., and impounded the truck, owned by Charles D. Stump of Lake Station, Indiana.

The truck will remain impounded until the \$46,800 fine and \$17.50 court costs are paid, police said. †

### About Small Imports

Many suburbs have so many foreign cars that it's been years since any pedestrian was hit above the knees.

### Last Drum

The first thing a child learns when he gets a drum is that he's never going to get another one.



## THE 1985 ASHE CONVENTION PHOTOS

### CONVENTION

Immediate Past President Chuck Luff and wife Penny reflect on a job well done.

Incoming President Bill Allen and his wife Joan.

Special award recipient Pat Valentine.

### CONVENTION GOLF TOURNEY

The Annual Golf Tournament was held on Saturday, May 18th at the Valley Forge Golf Course. Thirty-two golfers attacked the course on a sunny but windy day. Bob Balkover of the Pittsburgh Section shot an 86 for "low gross". J. Dixon Early from the Harrisburg Section and Steve Carl tied for the Calloway System "low net" with 74.

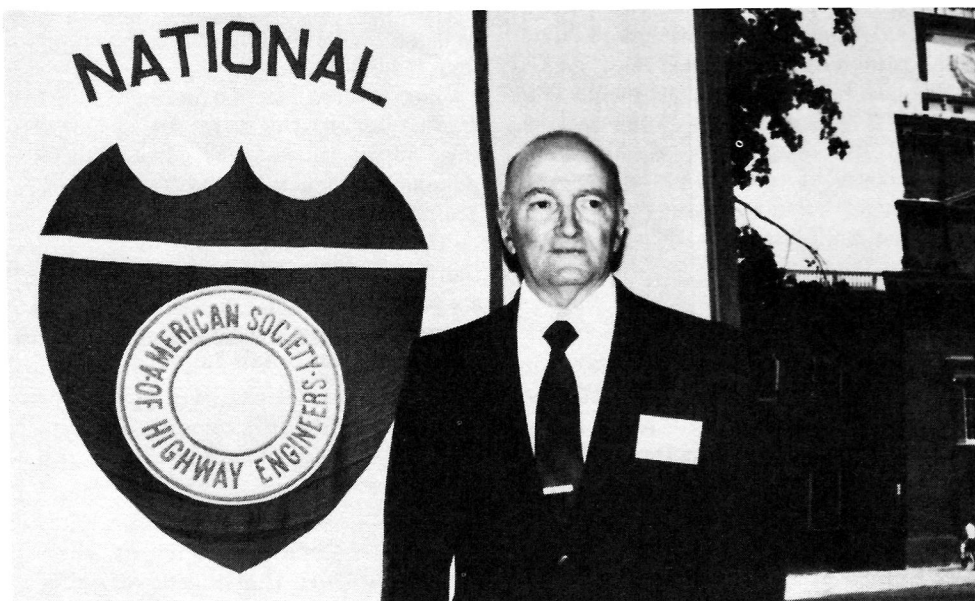
Rudy Melani of the Pittsburgh Section won "closest to the pin" prize. J. Dixon Early had the longest drive while Roberta Romack of the Ohio Western Reserve Section won "Womens Low Gross". †



### LIFE MEMBERSHIP STATUS

The following have attained life membership in their respective sections:

Harry M. Schork, P.E., Harrisburg  
John H. Long, Jr., Harrisburg  
Lester F. Burlein, P.E., Harrisburg  
John R. Dietz, P.E., Harrisburg  
Ray K. Grove, Harrisburg  
Kenneth E. Hess, R.S., Harrisburg  
Robert H. Klucher, P.E., Harrisburg  
Paul R. Schmuck, Jr., Harrisburg  
Robert M. Slovinac, P.E., Harrisburg  
Donald B. Stabler, P.E., Harrisburg  
Jean C. Esh, Harrisburg  
Gweneth W. Englebreth, Harrisburg



### EDITOR'S COMMENTS

The next issue of the Scanner is scheduled for November 1985, therefore I must have the information no later than October 15th, 1985. As mentioned in numerous issues of the Scanner, all pictures should be black and white. Do not submit colored pictures. Keep your address up to date at all times with your Section Secretary, otherwise you will not receive your issue of the Scanner. †



# THE 1985 ASHE CONVENTION PHOTOS

## CONVENTION

A Revolutionary War officer seeks recruits.

Chuck Luff signs to catch for the DuBois Dodgers.

With the Buc-Eye State's flag in the background, Bill Allen accepts his gavel from Chuck Luff.

## GOVERNOR ANNOUNCED \$1 BILLION FOR HIGHWAY AND BRIDGE CONSTRUCTION

Gov. Dick Thornburgh announced recently that \$1 billion worth of highway and bridge construction contracts were awarded by the state Transportation Department in 1984-85, the largest one-year investment of its kind in the 80-year history of the department and predecessors.

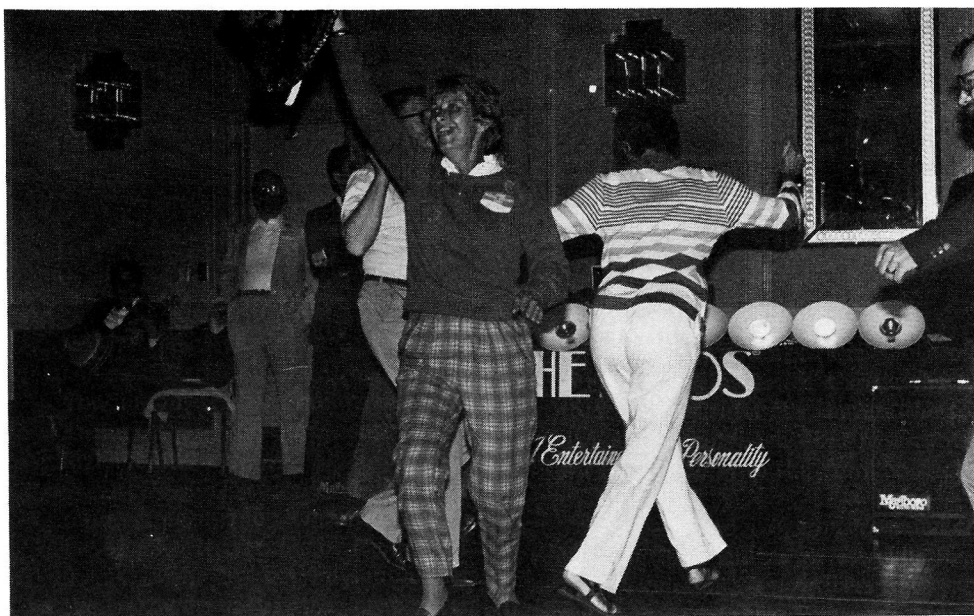
Addressing the opening session of the American Road and Transportation Builders 83rd annual convention, Thornburgh said, "This record amount of work, being done by private industry on the state's roads and bridge, exceeds the previous year's total by \$340 million and demonstrates once again our genuine commitment to a modern transportation network."

This major construction work, he said, is in addition to the year-round routine maintenance and repair of the highway network which has reached the annual level of \$600 million in state funds.

"During my administration," said Thornburgh, "we now have invested more than \$3.6 billion in contract work to restore our roads and replace or repair our bridges, and, in the process, we have produced an average of 60,000 construction-related jobs in private industry."

"This is a public-private partnership we are extremely proud of here in Pennsylvania, not only for what it has done for quality transportation and for the construction industry, in both of which you have such an interest, but for the overall health of the economy of the Commonwealth."





## THE 1985 ASHE CONVENTION PHOTOS

### CONVENTION

The Philadelphia Mummers' Strut.

Convention Chairman Paul McConnell and his wife Dorothy.

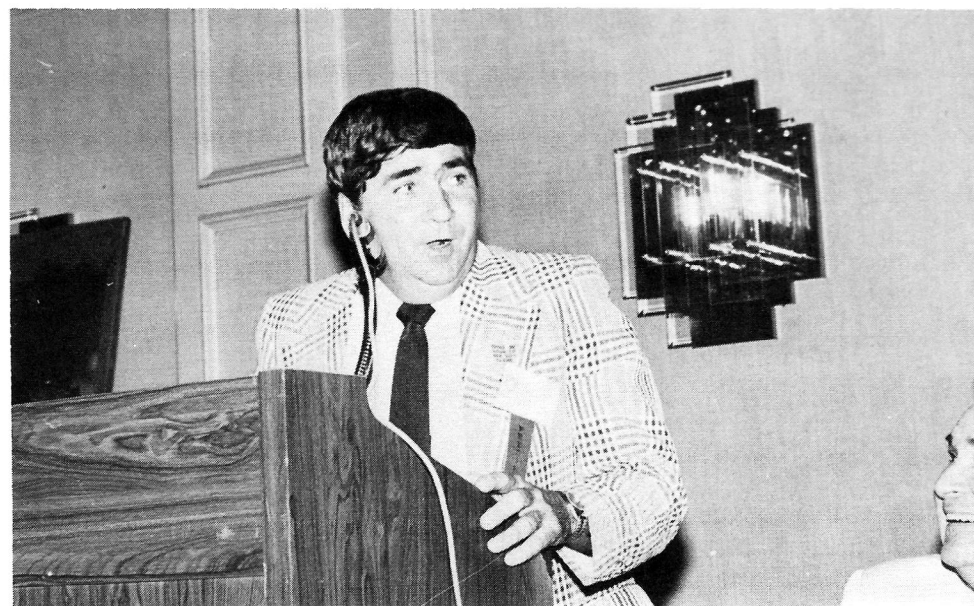
Chuck Luff accepts the flashiest jacket award at Friday luncheon.

### *New Members*

#### ALTOONA SECTION

- Kevin H. Evans, P.E., Johnstown, Pa.  
Senior-Consult.
- Thomas F. Peterman, P.E., Hollidaysburg  
Senior-Consult.
- Calvin A. Overdorff, P.E., Johnstown, Pa.  
Senior-Contr.
- Bernard J. Joyce, P.E., Altoona, Pa.  
Senior-Munic.
- Betty L. Walls, Hollidaysburg, Pa.  
Michael A. Baglio, Ebensburg, Pa.  
Senior-Consult.
- Edwin A. Trofino, P.E., Johnstown, Pa.  
Senior-DER
- James L. Bittner, Boswell, Pa.  
Member-DOT
- Galen L. Biddle, Roaring Springs, Pa.  
Member-Sales
- Everett C. Davis, Altoona, Pa.  
Senior-DOT
- Kenneth R. Eichelberger, P.E. Hopewell, Pa.  
Senior-DOT
- Samuel P. Grannas, Hollidaysburg, Pa.  
Senior-Contr.
- Dennis G. Harnish, Hollidaysburg, Pa.  
Senior-DOT
- Carol A. Hershberger, Hollidaysburg, Pa.  
Assoc.-DOT
- Thomas A. Hofer, Altoona, Pa.  
Assoc.-DOT
- Cynthia K. Malone, Hollidaysburg, Pa.  
Assoc.-DOT
- Mary K. McNelis, Hollidaysburg, Pa.  
Assoc.-DOT
- Carol B. Quinn, Williamsburg, Pa.  
Assoc.-DOT
- Deborah K. Shriver, Duncansville, Pa.  
Assoc.-DOT
- Gerald E. Stoltz, P.E., Altoona, Pa.  
Senior-DOT

continued on next page





# THE 1985 ASHE CONVENTION PHOTOS

## CONVENTION

David C. Sims - Man of the Year.

The pride of the Delaware Valley, National President Bill Allen and Section President Pat Dougherty.

National President Bill Allen advertising for the 1986 Convention in Ohio.



## HARRISBURG SECTION

Edward V. Zemaitis, Harrisburg, Pa.  
Senior-Consult.

Louis C. Shultz, Jr., P.E., Mechanicsburg,  
Senior-DOT

James B. Byers III, Hershey, Pa.  
Assoc.-DOT

Ralph E. Simpson Jr., York, Pa  
Member-Contr.

Russell S. Christie, P.E., Camp Hill, Pa.  
Senior-Consult.

W. Peter Wickwire, Jr., P.E., Camp Hill  
Senior-Consult.

Laconie Jackson, Harrisburg, Pa.  
Member-DOT



## NORTH EAST PENN SECTION

Angelo R. Boezi, Dunmore, Pa.  
Senior-DOT

Robert L. Slezak, Laflin, Pa.  
Senior-utility

James C. McHale, Dunmore, Pa.  
Senior-DOT

Thomas F. Soya, P.E. Olyphant, Pa  
Senior-DOT

John J. Syms, WilkesBarre, Pa.  
Assoc. Consult.

Andrew T. Heller, Avoca, Pa.  
Member-Consult.

Harold W. Brown, Dickson City, Pa.  
Assoc.- Consult.

## PITTSBURGH SECTION

Herbert C. Higginbotham II, P.E. Pittsburgh  
Senior-Munic.

William L. Hurd, P.E., McKees Rock, Pa.  
senior-Conslt.

Lawrence D. Phillips, P.E., Pittsburgh  
Senior-Consult.

John J. Kubiak, Pittsburgh, Pa.  
Senior-Consult.

Dominic F. Mazzei, Pittsburgh, Pa.  
Senior-DOT

Jackie A. Fill, Pittsburgh, Pa.  
Assoc.-DOT





## THE 1985 ASHE CONVENTION PHOTOS

### CONVENTION

Breaking the Ice on Thursday Night.

The first foursome to tee off.

She beat them all!

### FRANKLIN SECTION

Thomas B. Madara, Girard, Pa.

Assoc.-Materials

Brian S. Yedinak, Franklin, Pa.

Member-DOT

### SOUTHWESTERN PENNA SECTION

Craig L. Yost, P.E., Connellsville, Pa.

senior-DOT

J. Kirk Hanlon, Connellsville, Pa.

Senior-DOT

### WILLIAMSPORT SECTION

Richard C. Hooze, Williamsport, Pa.

Member-Eqpt.

Terry L. Brofee, Danville, Pa.

Senior-DOT

Read Bachman, Millerstown, Pa.

Member-Contr.

### CENTRAL OHIO SECTION

R. Dale Datney, P.E., Lancaster, Ohio

Senior-Contr.

Michael F. Coady, Columbus, Ohio

Member-Contr.

### CLEARFIELD SECTION

Dale L. Davis, Reynoldsville, Pa.

Member-Consult.

### CUYAHOGA VALLEY SECTION

David W. Marshall, P.E.

Senior-Consult.

Michael A. Pemberton, Cleveland, Ohio

Senior-Material

Roy G. Wild, P.E., Canton, Ohio

Senior-ODOT

Michael J. Williams, Massillon, Ohio

Assoc.-ODOT

Elisabeth E. Dunlap, Canton, Ohio

Senior-ODOT

### DELAWARE VALLEY SECTION

Michael J. Gaber, P.E., Morristown, Pa.

Senior-Contr.

Henry J. Kelley, P.E. Milmont Park, Pa.

Senior-Contr.

continued on next page





# THE 1985 ASHE CONVENTION PHOTOS

## CONVENTION

A great time was had by all.

Dave and Lois Sims flank the special award winner Pat Valentine.

Friday luncheon keynote speaker, John Sheridan, Commissioners, N.J. DOT.



James J. Pease, Philadelphia, Pa.

Member-Prod.

Carmen J. Valerio, Collegeville, Pa.

Member-Contr.

Michael J. Carragher, Philadelphia, Pa.

Assoc.-Consult.

David W. Clifton, Collingsdale, Pa.

Assoc.-Material

Edward J. Silver, Radnor, Pa.

Senior, - utility

Daniel J. Walter, P.E., Drexel Hill, Pa.

Senior-Contr.

Lawrence R. Bucci, Levittown, Pa.

Member-DOT

Robert O. Eck, P.E., Moorestown, Pa.

Senior-Consult.

Melvin E. Stein, P.E., Marlboro, Pa.

Senior-Consult.

Kenneth A. Johnson, Pennsburg, Pa.

Senior-Materials

John J. Serdy, P.E., Phoenixville, Pa.

Senior-Contr.

Cynthia M. Neider, Norwood, Pa.

Assoc-DOT

James E. Kearney Jr., Springfield, Pa.

Senior-Materials

John S. Depalma, Hatboro, Pa.

Member-Consult.



## LAKE ERIE SECTION

John W. Konrad, P.E., Painesville, Ohio

Senior-County

Tony DiGeronimo, Independence, Ohio

Member-Contr.

Gary L. Bammerline, P.E., East Lake, Oh.

Senior-DOT

Gordon D. Bookman, P.E., Laurelville, Oh

Senior-Consult.

Kenneth P. Carnet, P.E., Lorain, Ohio

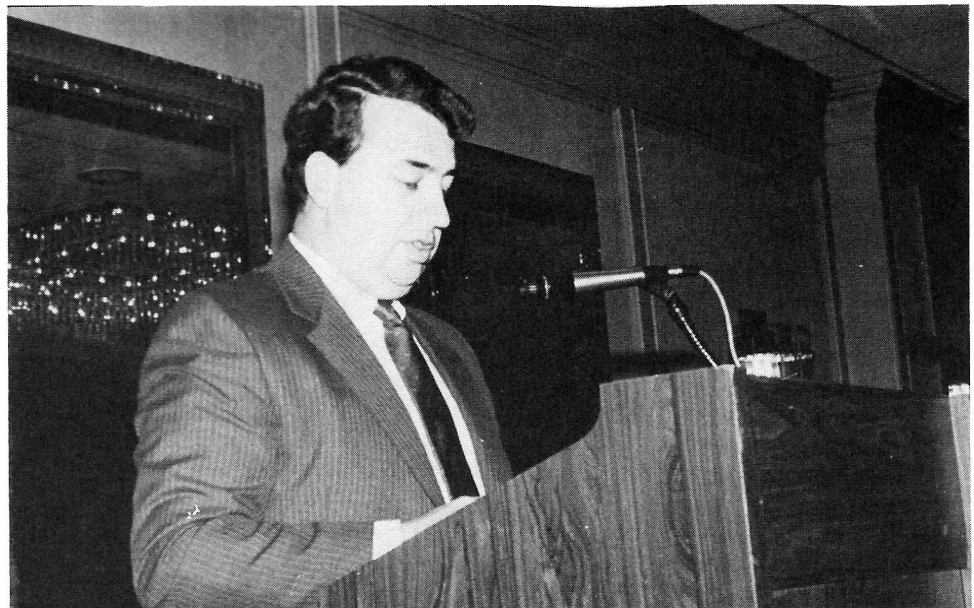
Senior-Municipal

Lawrence L. Foster, P.E., Westlake, Ohio

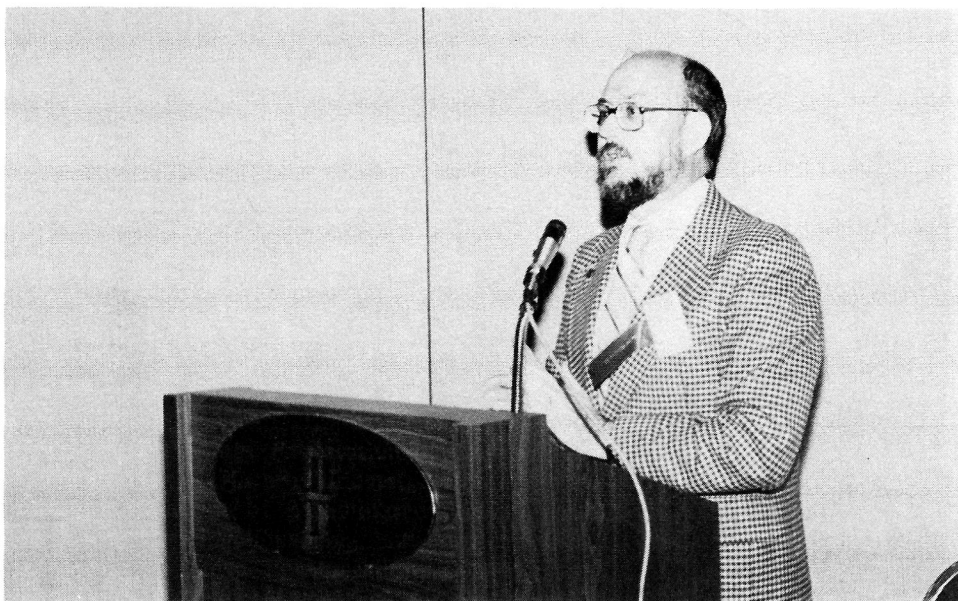
Senior-County

Thomas S. Kreczko, P.E., Willoughby, Oh

Senior-County



continued on next page



## THE 1985 ASHE CONVENTION PHOTOS

### CONVENTION

Dr. William Webster of the Goddard Space Center speaks on "The Industrialization of Space."

The Ferko String Band.

Guess who likes to wager on golf.



Jack E. McFadden, P.E., Euclid, Ohio  
Senior-County  
Donald H. Saunders, Lakewood, Ohio  
Senior-County  
Clyde W. Scott, P.E., South Euclid, Ohio  
Senior-Municipal  
Felix A. Spittler, P.E., Garfield Hts, Oh.  
Senior-County  
David J. Szabo, P.E., Lakewood, Ohio  
Senior-County  
Robert L. Durgin, Chesterland, Ohio  
Assoc.-Sales  
Robert E. Kane, Twinsburg, Oh  
Assoc.-Consult.  
Martin A. Gallito, P.E., South Euclid, Oh  
Senior-ODOT  
John T. Kurtz, Independence, Oh  
Senior-Mat. Prod.  
Martin Sulzmann, Lakewood, Oh  
Senior-ODOT  
Lazzlo Szanthe, Chesterland, Oh  
Assoc.-ODOT  
Raymond A. Barrish, P.E., Painesville, Oh  
Senior-Munic.  
Colin M. Durante, R.S., Westlake, Oh  
Senior-Contr.  
Milton Kaplan, P.E., Lyndhurst, Oh  
Senior-Contr.  
Joseph A. Nesnadny, Parma, Oh  
Senior-Munic.  
William J. Morton, P.E. Lyndhurst, Oh  
Senior-Munic.  
Merle A. Risher, P.E., Solon, Oh  
Senior-Munic.  
Richard J. Allar, P.E., Brooklin Hts, Ohio  
Senior-Consult.  
Donald C. DePaulo, P.E., Maple Hts, Oh.  
Senior-Tpk.  
Howard J. Heckler, P.E., Moreland Hills,  
Senior-consult.  
Thomas M. Krall, P.E., No. Royalton, Oh  
Senior-Consult.  
Gordon K. Moellman, Bay Village, Oh  
Senior-Consult.

continued on next page



## THE 1985 ASHE CONVENTION PHOTOS

### CONVENTION

Golf shots.

Golf shots.



Robert H. Tomasek, Brecksville, Oh  
Senior-Consult.

Kenneth A. Tyrpack, P.E., Brunswick, Oh  
Senior-Consult.

David J. Weglicki, P.E., Broadview, Oh  
Senior-Consult.

Ralph J. Gates, Lakewood, Oh  
Senior-Consult.

## Hypertension: One Major Risk Factor

One major risk factor of cardiovascular disease affects an estimated 30 to 35 million people in the United States. That risk factor is hypertension, or high blood pressure.

According to the American Heart Association, people with untreated and uncontrolled hypertension are three times more apt to develop coronary heart disease than people with normal or controlled blood pressure. Hypertensives have six times the chance of experiencing congestive heart failure and are seven times more likely to have a stroke.

Having high blood pressure does not necessarily mean a person is overanxious, compulsive or nervous. In fact, a person can have very high blood pressure and not even know it. The only sure way to monitor one's blood pressure is to have it checked regularly.

When medical professionals measure blood pressure there are two numbers they watch, the systolic pressure and the diastolic pressure. The systolic pressure, which is the higher number, indicates the pressure of the blood against the artery walls when the blood is being pumped through the body. The diastolic pressure, the lower of the two numbers, is the pressure against the walls of the arteries when the heart is "resting".

An example of a blood pressure reading is "120 over 80". This means the systolic pressure is 120 and the diastolic pressure is 80. The American Heart Association suggests that a systolic pressure greater



than 140 is usually considered high in an adult; and a diastolic pressure of more than 90 generally indicates hypertension. It is important to note that blood pressure does change from minute to minute. It changes with a change in posture, after exercise, sleep or when a person becomes excessively tense. A doctor will generally take several readings over a period of time before making a judgement about high blood pressure.

Often blood pressure can be controlled through some basic changes in lifestyle. A physician will usually recommend that a hypertensive patient reduce the amount of salt or sodium in the diet. An overweight patient might be urged to begin an eating program that reduces caloric intake, and is low in fat and cholesterol. Because cigarette smoking

can raise blood pressure, it is generally advised that smoking be stopped if possible.

And some studies suggest that an intake of more than 4 to 6 ounces of 80-proof alcohol per day will raise blood pressure. Therefore, physicians often recommend moderation in drinking habits.

Even when lifestyle changes are made, a person's blood pressure doesn't always come under control. In these cases medication can be prescribed.

Whatever the treatment, it is important that the regimen be adhered to. This usually means a lifetime effort. There's not yet a cure for hypertension, but by cooperating with the physician, a person can lead a normal life.



## Going Down Memory Lane



This is the way roads were repaired in 1895

This road crew is filling pot holes in the Dill Road,  
connecting Carlisle and York, Pa. It is now Route 74.

Photo taken as crew was working in the town of  
Dillsburg, Pa.



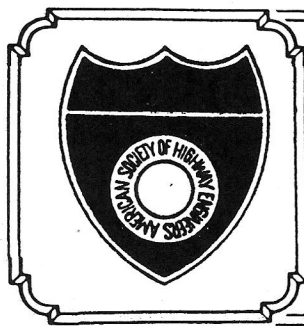
## Going Down Memory Lane



CUMBERLAND VALLEY RAILROAD BRIDGE, HARRISBURG, PA.

The old wooden Camel Back Bridge connecting Harrisburg and the West Shore, shown in the background.

The Cumberland Valley Railroad Bridge is in the forefront.



# THE ASHE scanner

July 1985

VOLUME XX No. 3

THE AMERICAN SOCIETY OF HIGHWAY ENGINEERS

JANUARY 1985

## President's Message



WILLIAM H.  
ALLEN, P.E.

My thanks to all members for the many offers of support for the coming year.

One primary goal is to continue the move toward expanding the technical services extended to Society members. An excellent surge in this direction was provided by the programs presented during the convention held in King of Prussia. Our Technical Committee will be chaired again this year by Matt McTish in order to provide continuity of effort. The committee is soliciting contributions of data from all members, planning to provide new and innovative material in the "Scanner" and preparing a technical "Reserve List" of speakers and data which will be available to all Sections.

Another goal is the continued expansion of the Society outward from the original nucleus. We have had inquiries and interest evidenced from many areas — including — believe it or not — Maylasia. At this time we are confining our efforts to more nearby geographical locations. Several meetings in this regard are, will be or have been conducted to progress these efforts as you read this.

As you have previously read, with expansion comes growing pains. To alleviate these pains I have appointed a new committee for Society Reorganization,

continued on page three

## ASHE MEMBERS ENJOY THE 23rd. ANNUAL CONVENTION AT VALLEY FORGE

23rd Annual Convention  
Stouffers Valley Forge Hotel  
May 16-19, 1985

Convention Theme -  
"Our History Is Only Our Beginning"  
Ice Breaker, May 16, 1985

The conventioners enjoyed a Philadelphia Block Party with authentic Block Party delicacies. Entertainment was provided by Disc Jockey Music, interrupted by an authentic presentation by the Ferko String Band. (Mummers)

### Exhibitors

On May 16 and 17, the exhibitors displayed their products and provided helpful information regarding their purpose and use. A list of exhibitors is as follows:

Aerial Data Reduction Associates, Inc.  
Atlantic Construction Fabrics, Inc.  
ARMCO, Inc.  
Cambrian Equipment Company  
Concrete Epoxy Technical Systems, Inc.  
CONTEK Construction Technology  
Dural International Corporation  
Georgetown Electric Ltd.  
HARCO Corporation  
Ingersoll-Rand Equipment Sales  
Lane Metal Products, Inc.  
Lockwood Support Services, Inc.  
Maccaferri Gabions, Inc.  
Mobile Lifts, Inc.  
OSIRIS Corporation  
Parsons-Brinckerhoff-EG, Inc.  
Penn-Cast Products, Inc.  
Pennsylvania Highway Information Assoc.  
Pneumatic & Electric Equipment Co., Inc.  
Prevailing Fringe Benefits  
Robbins Engineering Instrument Service  
Royston Laboratories, Inc.  
SIKA Corporation  
Signs of Safety  
Sur-Tech Engineering

### Annual Meeting, May 17, 9:00 a.m.

Delaware Valley Section President Pasquale (Pat) A. Dougherty offered welcoming remarks to those attending, after which the meeting was turned over to President Luff.

President Luff called the meeting to order after the Pledge of Allegiance.

Secretary Conner offered the invocation followed by a silent memorial for R. Martzall, Past President, H. Poulson, Past President and C. Hoffman, Member, all deceased this past year.

After roll call of sections, it was determined that the Pittsburgh Section will receive the convention attendance award.

President Luff then recognized and introduced all first time convention attendees.

Secretary Conner presented the Treasurers Report which reflected receipts of \$23,485.34 and disbursements of \$16,657.90 and a Total Cash Balance of \$54,407.17.

Secretary Conner presented the Membership Report which indicated a total membership of 2,272 which is an increase of 157 members since last year's convention.

Paul McConnell introduced his convention committees from the Delaware Valley Section. He stressed the importance of visiting our Exhibitors and attending the NASA Space Program this P.M.

M. Suich (New Sections) reported that Lake Erie Section was chartered May 8, 1985. They are working in the Dayton-Cincinnati area and New York State with other inquiries from Florida, Texas, etc.

Old Business - Paul McConnell asked on procedure for establishing a New Section. Luff said we hold a meeting with 15-20 people, and then present a charter.

continued on page three