

The A.S.H.E.

SCANNER

VOLUME XIX, No. VIII

THE AMERICAN SOCIETY OF HIGHWAY ENGINEERS

APRIL 1984.

President's Message

WARREN A.
MILLER



Since this is my last message to you, there are many in this organization who deserve special mention—however space does not permit.

To the membership of ASHE you have done a very fine job recruiting new members and advancing the Society. The members sent to National as your section representatives have been very helpful in making my term of office much more productive. In my first message, I requested your help and guidance — you provided it.

To the National officers — a job well done — Terry Conner and Bob Yeager, without your fine support the Society would certainly suffer. To the new president “Chuck” Luff and his staff — all the best wishes and my continued support.

Hope to see you “at the Convention”.

CONVENTION UPDATE

1984 ASHE

Activities have been scheduled and the planning is complete for our upcoming 1984 ASHE National Convention.

This year's Convention, to be held at the beautiful Greensburg Sheraton Inn, will offer outstanding technical sessions, recreational events, tours, exhibits, entertainment, dining and socializing.

Timely technical sessions on pavement management and recycling will be conducted. Over 30 exhibitors will be present.

OFFICERS AND DIRECTORS NOMINATED FOR THE 1984-85 YEAR

Officers and Directors were nominated at a meeting held at the Holiday Inn, Brookville, PA. J. Dixon Earley, P.E. presented the following slate of officers and directors for the 1984-85 fiscal year to the National Board of Directors at their meeting January 20, 1984.

President - Charles E. Luff, Cuyahoga Valley Section

1st Vice President - William H. Allen, P.E., Delaware Valley Section

2nd Vice President - G. Michael Tiani, Pittsburgh Section

Secretary - Terence D. Conner, P.E., S.W. Penn Section

Treasurer - Robert E. Yeager, R.S., Altoona Section

Nominated 3 yrs as Directors:

David E. Bower, Williamsport Section

Thomas G. Criswell, P.E., Cuyahoga Valley Section

Samuel H. Callisto, P.E., Altoona Section
David B. Jones, P.E., N.E. Penn Section
Edward S. Nasuti, P.E., Clearfield Section

National Directors continuing in office — 2 years:

David E. Baker, S.W. Penn Section

Arthur K. Banks, P.E., Charleston Section

Matthew J. McTish, P.E., East Penn Section

Michael J. Suich, Franklin Section

Directors - one year:

Albert J. Bedard, Jr., P.E., Harrisburg Section

Daniel K. Bittler, P.E., Western Reserve

Frank S. Lopez, Jr., N. Central W.V. Section

Daniel V. Naranch, Ohio Valley Section

Warren Miller, Altoona Section, who will become Immediate Past President, will serve for 1 year as a member of the Board of Directors and Chairman of the Nominating Committee for the year.

Escorted tours of Ligioneer, Greensburg and Pittsburgh will be hosted on Friday and Saturday, respectively. Live entertainment preceded by exquisite dining will be provided Thursday thru Saturday evenings. And lastly, a challenging array of golf and tennis tournaments with tantalizing prizes will be available.

The first and only mailing of the Convention Announcement was sent out in March. For those who may not have received a Convention Announcement, a duplicate announcement and hotel reservation forms have been included in this issue of the Scanner.

To accommodate the anticipated crowd and promote comradery, all rooms at the Greensburg Sheraton have been reserved for ASHE Convention registrants. However, we urge everyone to reserve their accommodations early. Additional rooms

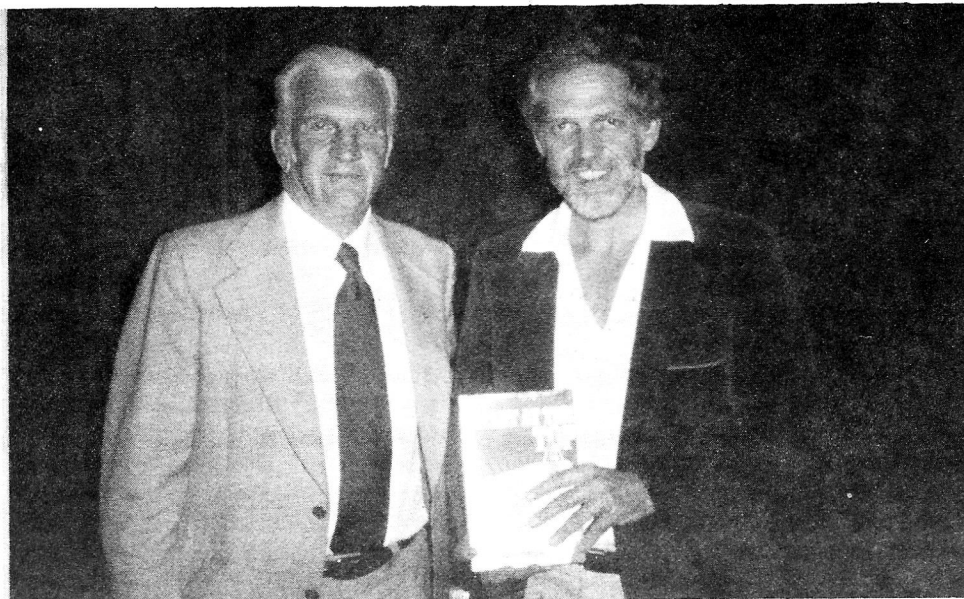
will be available at nearby motels. Unfortunately, the special Convention rates cannot be extended to these facilities. Other motels within one mile of the Sheraton include the Mountain View Inn (412) 834-5300 and the Knights Inn (412) 836-7100.

For anyone requiring assistance in registering or reserving motel accommodations, you may contact Denise at Wilbur Smith and Associates (412) 366-2420.

Other activities available:

1. Racquet Ball - no guest fees - hourly charge for court reservations required.
2. Museum Greensburg - no charge - hotel will provide van transportation for guests.
3. Shopping - two major facilities are nearby: Westmoreland Mall and Greensburg Mall. Hotel will provide van transportation.

continued on next page



tion for guests.

4. Movie Theatres - several are located within a short drive.

5. INDOOR SWIMMING POOL.

PRODUCT EXHIBITORS

SIKA Corporation
Advanced Drainage System
Penn Cast Products
A. R. Chambers & Son, Inc.
L.S. Lee & Son of PA
Royston laboratories
Parsons Brinkerhoff Gibbs and Hill
Crafco Northeast
Spider Staging
Pittsburgh Air Rental
George L. Wilson Company
Pavement Technology
E.I. Dupont De Nemours Co., Inc.
U.S.E. Diamond Inc.
Mitchell Fibercon, Inc.
Chemgrout
Zurn Industries Bridge Divison
Beckwith Machinery
Maccaferri Bagions, Inc.
Lane Metal Products, Co., Inc.
Schonstedt Instrument Co.
Thoro Systems Products
Harco, Inc.
Culverts, Inc.
Armco, Inc.
G. W. Leach
Dural International
Penna. One Call System

PROFESSIONAL EXHIBITORS

American Society of Highway Engineers
Pennsylvania Society of Professional Engineers
ESWP
ABCD



CUYAHOGA VALLEY

Bob Burkhart, B & O Railroad, speaker
"Highway Improvements Related to R.R. Crossing R/W, etc." speaking to our Section.

Left to right Guss Arendale, Thomas Mudd,
both of Ruhlin Construction Co. and Mr. Morgan, speaker on "Flat Railroad".

Speaker, Mr. Morgan on "Flat Railroad of Future." Program Chairman at his left, James Brunot, P.E. (holding book)

1984 NATIONAL CONVENTION

ASHE

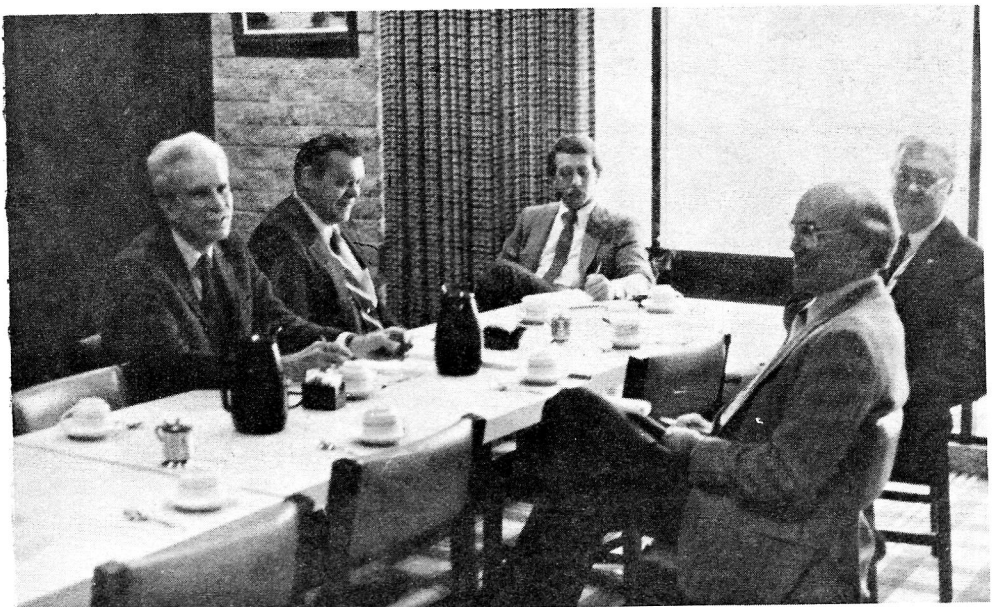
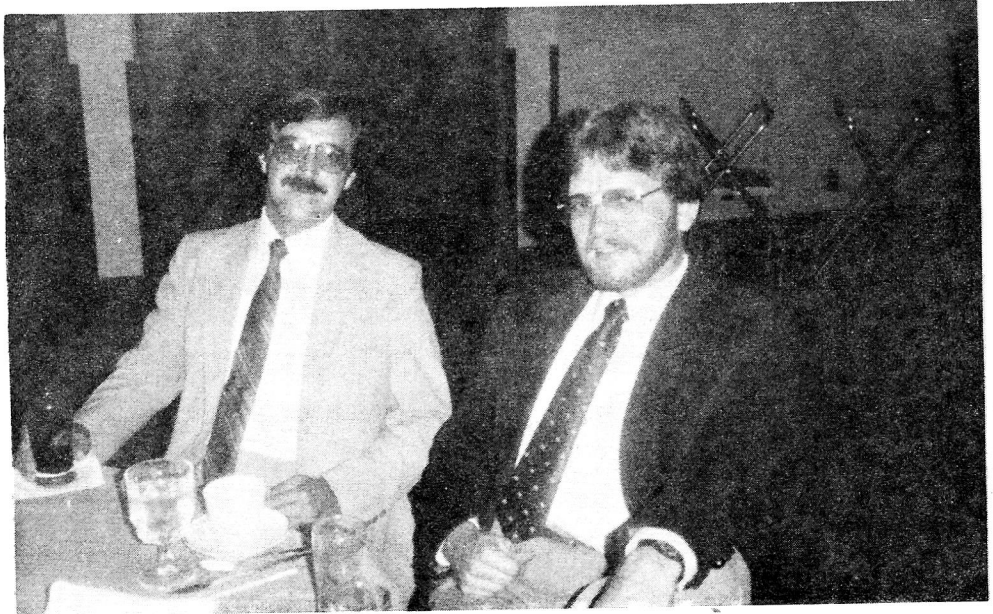
TECHNICAL WORKSHOP AGENDA

I. INNOVATIVE HIGHWAY LATERAL SUPPORT CONCEPTS by Mr. Dennis Boley - Nicholson Construction Co.

- a. Cost Effective - Quality Assurance
 1. Define Problem
 2. Level of Service
 3. Value Engineering
- b. H-Beam and Concrete Lagging
 1. Landslide Control
 2. Washout Control
 3. Engineering - Design/Construction Management
- c. Construction Process
 1. Example of Process

II. ASPHALT RECYCLING

- a. Goals and Objectives
 1. Pavement Management System of Organization
 2. Recycling as an Alternative
Sam Tiglio, Allegheny County
- b. Types of Recycling Processes
Kenneth Sufka, A.R.R.A.
 1. Surface Plane
 2. Hot Process - 25%, 50%, 75% mixes
 3. "Cold" in Place - Major topic of discussion
- c. Panel of Vendors/Contractors
 1. Recycling "rejuvenating" agents - Colin Durante
 2. The Recycling Process - equipment technology - Mike Rago, Trumbull Corporation
- d. Panel of Municipal Users
 1. PennDOT - Bill Sacco/Mike Graham
 2. Allegheny County - Larry McDonald
 3. Local Concern - Bethel Park - George McTall

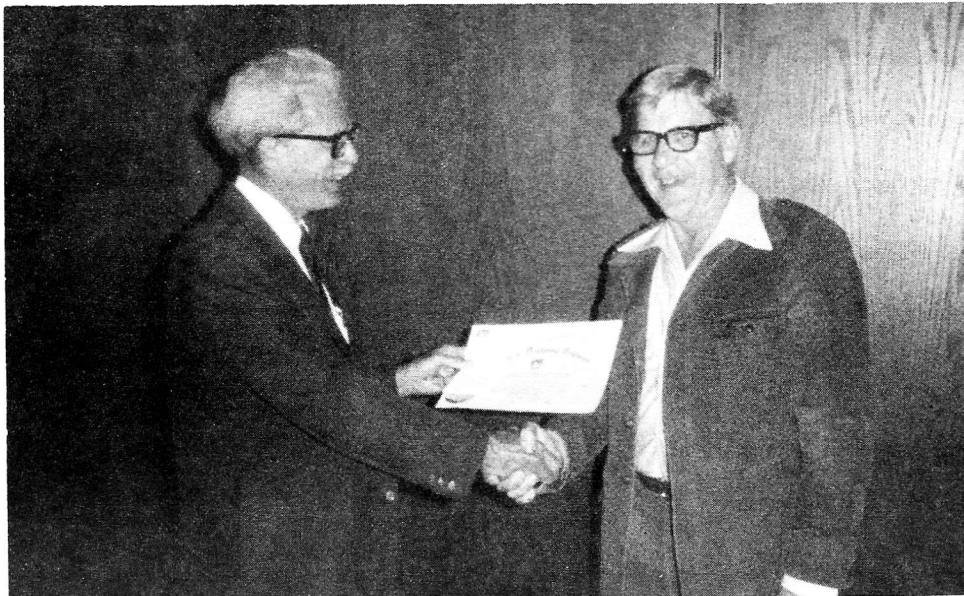
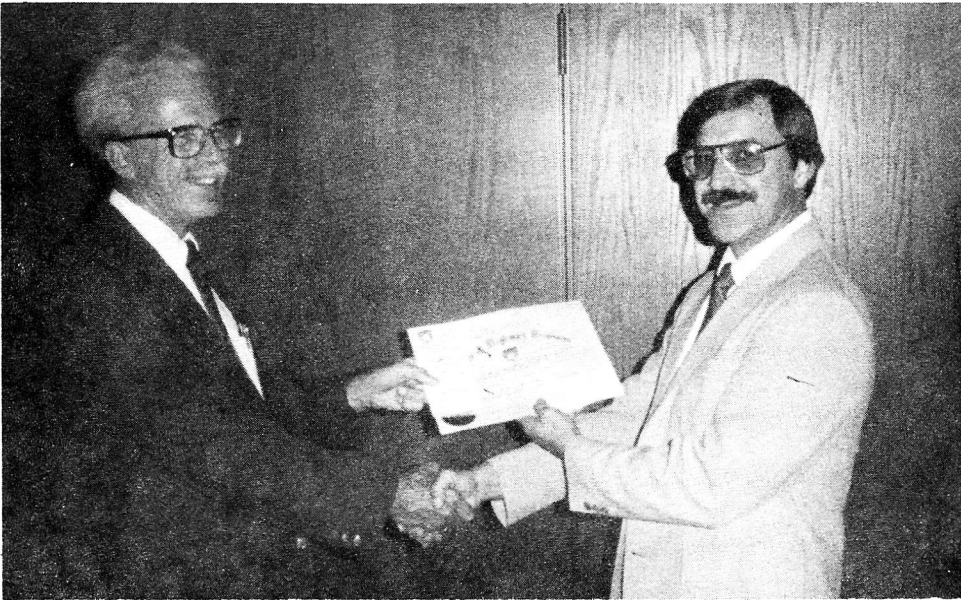


CUYAHOGA VALLEY

Left to right: Jim Jankowski, and Rich Swince.

Left to right: Ed Williams, East Ohio Gas, Chuck Luff, East Ohio Gas, Dave Celik, City of Akron.

One of our Directors and Officers meetings 1983.



Cuyahoga Valley

Thomas G. Criswell, Public Relations

NEW SECTION FORMED IN OHIO

Frank Fischer assisted Chuck Luff, the new section chairman, in bringing together the 12 deputy directors of ODOT representing all 88 counties of the state of Ohio to plant the seed of the benefits of the American Society of Highway Engineers being the common denominator for better communication and cooperation between those people that construct and maintain the state's highway system. The meeting was held in Columbus, Ohio, January 25, 1984, and was a complete success. Over 50 people attended, which included city, state, and county officials. Also, people representing consulting firms, construction companies, highway products, utility companies and etc.

We are very optimistic about starting several new sections in Ohio. The first additional section was formed through several members of our section who work and live in the Columbus area -- Roland Nesslinger, Ronald Calhoun, Joseph Kindler, Bill McKenna, and Warren J. Smith (Director of ODOT).

The temporary officers of "The Central Ohio Section" that will receive their charter in the spring of 1984 are:

President Roland Nesslinger - Consultant
Vice Pres Ronald Zook - ODOT
Secretary James Gabriel - City of Columbus

Treasurer Ronald Calhoun - Fiberized Products

Directors:

Keith Henry - ODOT
Bayard Weizenecker - Consultant
Joseph Kindler - Contractor
James Laird - Utility - Columbia Gas

The latest count of members that I have for the new section is 35, 30 signed applications and 5 transferred members.

continued on next page

CUYAHOGA VALLEY

Jim Jankowski receiving certificate and pin from President Dave Fielder.

Gale E. Browning receiving certificate and pin from President Dave Fielder.

Dick Overmeyer receiving certificate and pin from President Dave Fielder.

List of new members in the Cuyahoga Valley Section during the last year, May 1983 to present:

Chester R. Darrah - ODOT
 Thomas M. Davis - ODOT
 William D. Jones - ODOT
 Roland Nesslinger - Consultant
 John W. Ryder - Contractor
 Roy M. Zerby - ODOT
 Warren J. Smith - Director of ODOT
 David J. Celik - City of Akron
 James Cooper - Consultant
 Harly W. DeHoff - ODOT
 Robert L. Helm - Utility
 James S. Jankowski - Sales
 Richard L. Cook - Consultant
 William P. McKenna - Consultant
 Joseph A. Kindler - Contractor
 Steve J. Schreiber - Consultant
 Gale E. Browning - Sales
 Ronald A. Calhoun - Sales
 Dave E. Sicker - ODOT
 Robert A. Kolopus - Consultant

All are a credit to the Highway Industry. There is an additional 5 applications being processed which will bring out total membership to 87 + members.

We feel that it is the quality of the program that helped increase membership and the total commitment to the purpose of ASHE, that our membership has.

Programs we have had over the last year are as follows:

Steel Fiber Aggregate in Concrete - Pete Tatnall;

Tour of Goodyear Tire and Rubber Co-new Technical Center and Test Track;
 Golf Outings;

Reports on the successful Pittsburgh PA Bridge Conference,

Crack and Seating of existing concrete pavement prior to resurfacing to prevent reflection cracks in new pavement,
 social outings with wives and/or girl friends,

Rail Road Companys - Procedures, Policies that railroad engineers dictate related to highway improvements, and

"The construction of the new river gorge bridge" by Michael Baker, Jr., Consultant, Inc.

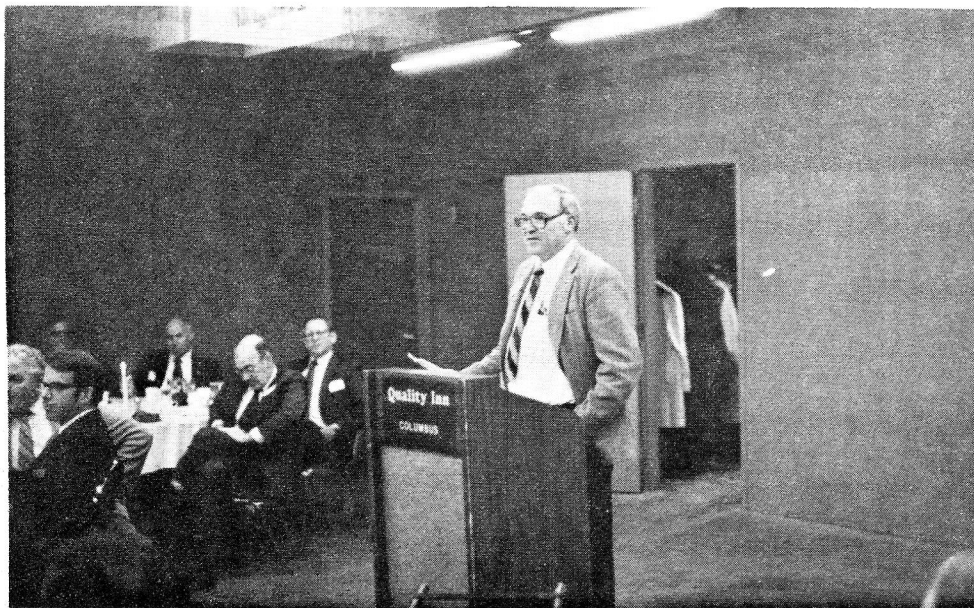


CUYAHOGA VALLEY

Dave Sicker receiving certificate and pin from President Dave Fielder.

Steve Schreiber, P.E., receiving certificate and pin from President Dave Fielder.

Dave Celik, P.E., receiving certificate and pin from President Dave Fielder.



PHIA NEWS

A trip to Washington by prominent Pennsylvania Highway Information Association (PHIA) members helped to spur remarkably quick Congressional action in passing Interstate Cost Estimate (ICE) legislation, needed to enable states to spend \$5.5 billion in interstate funding already appropriated for 1983-84. PHIA's Tuesday, February 28 Bus-In preceeded passage of the legislation by the House on Wednesday, February 29 and by the Senate on Friday, March 2. The President signed the bill into law on Friday, March 9.

Pennsylvania's share of the federal-aid interstate program is expected to be \$251 million. Projects on the State's interstate program include six segments of I-279 in Pittsburgh, a section of I-78 in the Lehigh Valley and a section of I-476 (the Blue Route) in Delaware County.

Although PHIA does not lobby, a number of individual PHIA members participated with the Associated Pennsylvania Constructors (APC) in a Bus-In to Washington, D.C. on February 28, part of a nationwide construction industry campaign to free the frozen interstate funding. The PHIA delegation was led by President Bob Bartlett of L.B. Smith, Inc., and included longtime friends Ed Parkinson, (PHIA's first president), Bus Pugh and Art Reese; Educational Trust Fund contributors Rich Wagman of G.A. & F.C. Wagman, Inc., and Jim Munroe of Stabler Construction Co.; State Transportation Advisory Committee Chairman Mike Liptak of Highway Equipment and Supply Company, and APC Executive Vice President Hank Heck. PennDOT Deputy Secretaries Howard Yerusalim and Harvey Haack also joined in the appeal for release of the funds. PHIA staffers Bob Hetherington and Rick Atkinson organized the successful effort.

The PHIA group attended a morning briefing on the ICE situation sponsored by several national construction industry trade associations at the International World of Concrete Exposition in Washington. Pennsylvania's group was the largest in attendance.

continued on next page

COLUMBUS

Frank Fischer, ODOT, opening Columbus, Ohio meeting, January 25, 1984.

New section meeting in Columbus, Ohio.

New section meeting in Columbus, Ohio.



East Penn

Bart Snyder, Public Relations

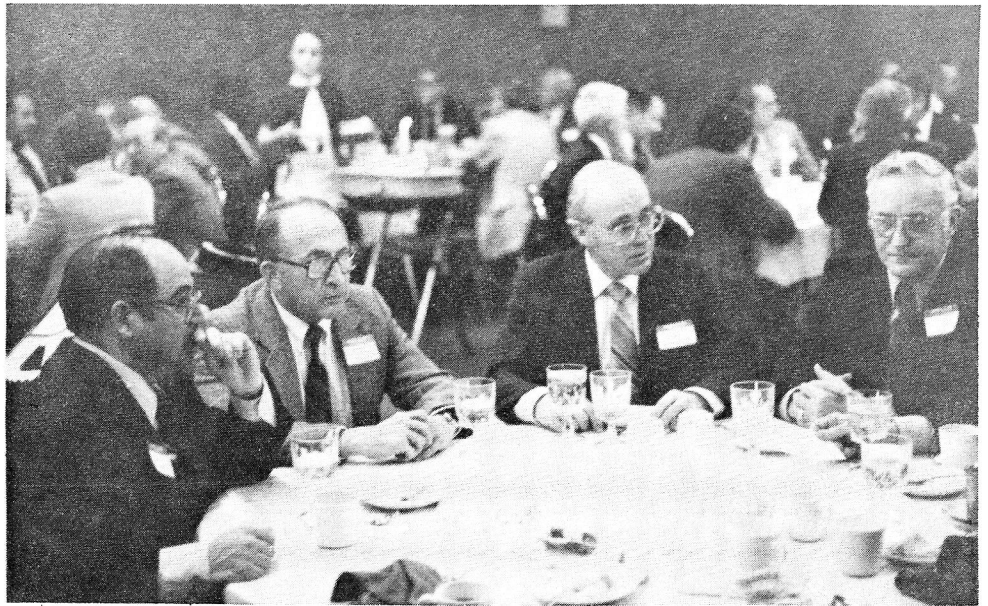
Twenty five members attended the regular dinner meeting of the Section held on February 14, 1984, at Trainers Inn, in Lehigh, Pa.

Mr. Ronald Dmytrow, program chairman, introduced Mr. Charles Jones, an engineer for the consulting firm of Spotts, Stevens, and McCoy of Reading, Pa., whose subject was the City of Reading's gigantic pumping station which was just recently constructed. Incidentally, Mr. Jones is a member of our own East Penn Section.

Mr. Jones gave a talk and slide presentation on the step-by-step construction phases of this intricate project, from start to finish, which is located in North Reading, adjacent to the Warren Street By-pass. For the installation of the four huge submersible pumps, an excavation cavity to a depth of forty five feet was the initial part of the work. The total cost of the project was \$1,500,000 which was designed by Spotts, Stevens, and McCoy firm, for which they received the Engineering Excellence Award.

As a parting credit, Mr. Jones played a major role in all phases of design and construction on this mammoth project, and our Section is proud of his accomplishments.

The regular dinner meeting, which was scheduled to be held on March 13, at Shankweiler's Hotel, in Fogelsville, was cancelled due to extremely bad weather and hazardous driving conditions.



EAST PENN

Ronald Dmytrow, left, program chairman of the evening, presenting a token of appreciation to Mr. Charles Jones, engineer of the consulting firm Spotts, Stevens and McCoy, after his program presentation at the regular dinner meeting of the East Penn Section, February 14, 1984.

COLUMBUS

New section meeting in Columbus, Ohio.



PHIA NEWS

continued from last page.

Following the briefing, the group visited the individual members of Pennsyl-

vania's Congressional Delegation and their staffs, discussing the importance of the legislation to Pennsylvania's highway program and to our economy, and the need to pass the legislation quickly before the '84 construction season was lost.

Although the interstate money had been appropriated by Congress in the 1982 Surface Transportation Act, it could not legally be distributed to the states until the passage of ICE, the estimated cost to complete all remaining segments of the national interstate highway system. Pennsylvania's Congressional Delegation indicated strong support for ICE passage, recognizing that the failure to pass the legislation could adversely affect some 25,000 Pennsylvania jobs in construction and industries.

NASHTO NEWS BY PENNDOT

Contact: William J. Pogash
717-787-1964

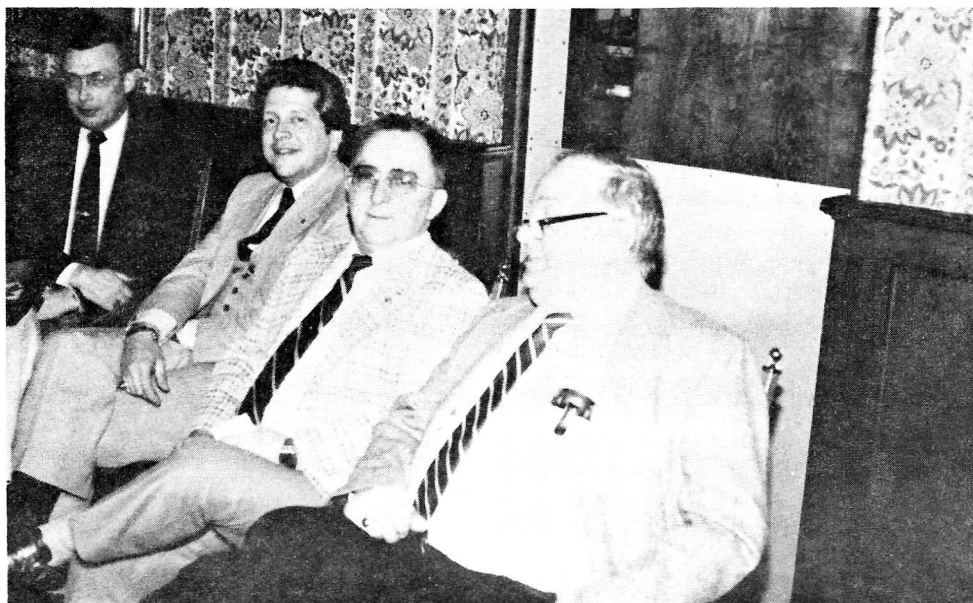
60th NASHTO CONFERENCE

**"Professionalism, Performance And
Perceptions In Transportation :
Stepping Stones
To Economic Vitality"**

MAY 9-11, 1984

**Hershey Lodge and
Convention Center
Hershey, Pennsylvania**

Hosted by:
PennDOT



Harrisburg

Brian McCoola, P.E., Public Relations

Three local activities were featured during the recent ASHE winter season.

On February 6th, Richard A. Ulmer, P.E., of Erdman, Anthony Associates presented an illustrated talk on the award winning Genesee River Bridge, Rochester, New York. Mr. Ulmer highlighted the design and construction of the 10 span, twin structure crossing the Genesee River and Genesee Valley Park. The project was cited in 1981 as an Outstanding Civil Engineering Achievement in the state of New York.

On Wednesday, February 22, 1984, Mr. Robert S. Holmes of the ENO Foundation for Transportation addressed 9 local engineering societies during the annual Engineering Week dinner. The event, held this year at the Mechanicsburg Naval Supply Depot, was sponsored by the Pennsylvania Society of Professional Engineers.

The March 5 local ASHE dinner meeting featured a narrated audio-visual presentation by Mr. Thomas T. Trussel of Central Atlantic Contractors of Aberdeen, Maryland. The speaker, a vice president of the American Concrete Pavement Association and a member of Associated Pennsylvania Constructors, highlighted new advances in concrete pavement and roadway restoration. New materials and specialized pavement grinding techniques were discussed.

In April, the Harrisburg Section Ladies Nite Social Outing drew a usual fine turnout. This popular event, held Saturday, April 7, 1984 at the Harrisburg Host Inn, included dinner and an evening of theatre.

Thirteen Harrisburg Section members were recently accorded Life Membership status by the Harrisburg Section. Reflec-

continued on next page

HARRISBURG SECTION

Thomas T. Trussel of Central Atlantic Contractors addresses Harrisburg Section at March 5 dinner meeting.

Large crowd on hand to hear Thomas Trussel remarks March 5.

Norm Bryan, Robert "Shorty" Koser, and Bob Turgeon pose for the photographer during March 5 Harrisburg ASHE meeting.

ting continuous membership with the original charter ASHE section since 1958, those honored included:

Albert J. Bedard
James R. Cutchall
Philip C. Hanford, Jr.
Joseph E. Henson
George C. Hertweck
John H. Long, Jr.
Milford R. Moore
Donald J. Redlich
John V. Rignani
Donald C. Rimmer
Harry M. Schork
Dominic M. Stello
J. Chadwick Wagner

Pittsburgh

The presentation at the January meeting familiarized many of the members with the Cathodic Method of corrosion protection. Although this concept as was explained by Harco Corporation is not new in some industries, is becoming increasingly important in the Economics of our dynamic society. This method of construction is based on the idea that corrosion occurs where the electrical current leaves the steel. Eliminating this natural electrical flow, stops corrosion. The system as used on reinforced concrete structures minimized additional cost of overlays, traffic protection, and ancillary work. This product will be exhibited at the 1984 Convention.

February again brought an informative session by Sika Corporation. The evening or actually afternoon, started at 4:00 and included a three hour discussion on epoxy resins and polymer systems. "A soup to nuts" presentation of chemical theory and practical application had something for everyone. We were privileged in that this normal lengthy workshop was geared to be compatible with the time constraints of our membership. Besides, this was an interesting twist from the January meeting.

HARRISBURG SECTION

President Carl Spataro, left, presents membership certificate to William Lee.

Fred Eshleman, standing right, shown receiving free dinner as winner of drawing at March meeting in Harrisburg.

FRANKLIN

Left to right Pat Antonio, Western Penna. Materials Engineer, Neal Wood, a future ASHE member and Perry Wood, Retired PennDOT District Materials Engineer.





Franklin

Karl Rice of Warden Asphalt hosted the November ASHE meeting at the Erie Club in Erie, Pa.

A turnout of 85 members and guests enjoyed a superb buffet and a program featuring Mr. Jack Baker, newly appointed Assistant District Engineer, PennDOT Maintenance, District 1-0.

Jack is an active ASHE member and presented a five page report of bridge projects in his seven county area that were listed for bid from November 1983 to September 1984.

Baker's comments about the sense of teamwork and pride in the department laid the groundwork for the special speaker at the February meeting.

February is the month for the Annual Venison Dinner and it's held at the Franklin Club in Franklin, Pa.

Speaker for the event was Harvey Haack, Deputy Secretary for Planning for the Pennsylvania Department of Transportation.

Deputy Secretary Haack listed four items in Governor Thornburgh's Program for Prosperity:

1. a cut of corporate income taxes by 10%
2. a rollback of personal income taxes by 4%
3. earmarking more than 2/3 of the general fund increase for excellence in education, and
4. programs for economic development and job creation increasing in a range from 30 to 100 percent.

Citing PennDOT examples of Performance, Mr. Haack listed projects from the eastern to the western part of the state..... the Platt Bridge in Philadelphia to I-90 in Erie.

continued on next page

FRANKLIN

Left to right Harvey Haack, Deputy Secretary for planning PennDOT; Michael Suich, Maintenance Engineer for District 1-0, PennDOT and national Director ASHE; and Lewis Gurley, District Engineer, District 1-0.

Left to right Herb Hasbrouck, ASHE Director, Dick Lugg, Franklin ASHE President and Jack Molke, new ASHE member.

The annual venison dinner ALWAYS draws a crowd!



Mr. Haack also noted that a million dollar performance audit has shown that as many as four of the best management consultants in the county feel PennDOT is performing well, but there are many areas that can stand improvement.

Noted was the need for improvement in procurement and submanagement policy decimation and the setting of specific priority programs and the paring down for the system of performance measures.

Harvey Haack then listed a number of qualities that peak performers have in common. The ability to plan, a high sense of self-confidence, the need for responsibility and ways they can use their qualities in a positive sense -- mentally rehearsing a plan to handle key situations and critical events, the taking of creative risks, the ability to self-correct and the pride they feel when they review their own efforts.

In summation, Deputy Secretary Haack asked that the people of Pennsylvania make a personal commitment to join in a partnership for progress, visualizing and working toward a prosperous Pennsylvania.

PennDOT District Engineer, Lewis Gurvey, noted that the dinner meeting of over 100 members and guests included all of the elements needed for successful roads in Pennsylvania. The men who researched and designed them, the legislators who work on obtaining funding, the contractors who construct or rebuild and the maintenance people who are responsible for getting the longest life from them.

Franklin ASHE is growing, certificates of membership and pins were awarded to 10 new members and all members were reminded by Past President Gene Smith to make their plans now for the upcoming National Convention.

South West Penn

Frank Petrarca, Public Relations

Our section's January meeting was held on Wednesday, January 25, 1984 at the Sun Porch Restaurant on Rt. 40 Hopwood. Duquesne Slag Products Co. sponsored the social hour. Mr. Richard K. Guzowski, P.E. Northeast Regional Manager Reinforced Earth Co., spoke on "Application, Design, and Construction Reinforced Earth." the film presentation showed projects throughout the world on retaining walls for various situations.

February 29, 1984 found us at Jimmy's Restaurant on Old Rt. 119, Scottdale. Another family style dinner was a gastro-

nomical delight to all. Mr. Russ Rohleder, Bell Telephone Co. Public Relations, talked about "Tele-communication Advantages and Necessities." Also a subtopic was the "Destruction of Ma Bell". Mr. Rohleder certainly held our interest throughout with information on new sophisticated equipment which will permit us to activate timers in the home, full service shopping, banking, just by dialing a code. His injection of humor sure had us laughing. The question and answer session cleared up many changes that we previously hadn't understood. International Mill Service sponsored the social hour.

Our section is looking forward to a joint meeting with the Pittsburgh Section in April.

Our nominating committee has prepared the slate for next year's officers.

Altoona

by Glenn W. Keiper, P.E. and
Gary L. Wisor, P.E., Public Relations

The Altoona Section held its January meeting at the Creekside Inn, near Leamersville.

Those in attendance enjoyed a prime rib dinner followed by a slide presentation by Mr. Angelo Risi of Risi Stone, Ltd, of Ontario. Mr. Risi described two of their pre-cast concrete products, "Dura-Crib" and "Dura-Blok."

Dura-Crib is billed as an alternative to treated lumber. As shown by the slides, this modular concrete retaining wall system can be attractively incorporated into terraces, steps, planters, or retaining walls.

Dura-Crib units are 6" x 6" x 47" and are thus easily handled by two people. The modules are formed to either stack vertically or on a 12:1 batter. Dura-Crib units have been installed horizontally as well for lining drainage ditches. For this application, unlike with gabions, mechanical cleaning is possible.

Dura-Blok, a 1' x 2' x 6' block wall system, has been used in flood control projects as stream walls. Particularly applicable to residential areas, this product is an attractive alternative to other wall systems such as steel sheeting.

P. Joseph Lehman, Inc., Consulting Engineers sponsored the meeting.

The Altoona Section held its February meeting at the Allegro Restaurant in Altoona.

Mr. Robert Foor of Lane Metal Products in Bedford presented a program on "Plastic-Bore," a new corrugated steel drainage pipe. This concept features an

inner barrel of smooth PVC bonded by an inert filler to a standard corrugated galvanized steel pipe.

Several advantages to using Plastic-Bore were pointed out by Mr. Foor. The PVC core provides a Manning coefficient of 0.009 allowing a possible reduction in required pipe diameter and associated trenching and installation costs. Mr. Foor also cited extensive test data compiled by Bethlehem Steel Corporation's Homer Research Laboratories supporting the resistance to abrasion, chemicals and impact.

The liner and bond in Plastic-Bore pipe can withstand deflections of more than 10%. Also, outdoor storage for more than 12 months results in no degrading of the pipe. Field performance tests have excellent results in environments such as mining, tidalwater, municipal and rural drainage systems.

Certificates and pins were presented to Lawrence Bilotto and Karen Shutty at the January meeting. †

NEW MEMBERS

HARRISBURG SECTION

Stephen M. Carl, P.E., Westminster, MD, Senior-Consultant
Charles S. Morgenthaler, P.E., Baltimore, MD, Senior-Consultant
J. Henri Pariseau, Camp Hill, PA, Senior-Contractor
George V. Wass, Hummelstown, PA, Member-DOT
Gerald J. Malasheskie, P.E., Harrisburg, PA Senior-DOT
John K. Murphy, New Columbia, PA, Associate-Contractor
David J. Black, P.E., Chambersburg, PA, Senior-Contractor
Robert J. Janecko, Harrisburg, PA, Senior-DOT
William E. Lee III, P.E., Cockskeyville, MD Senior-Consultant

ALTOONA SECTION

Robert A. Burk, East Freedom, PA, Senior-DOT
Jeffrey S. Bickel, Altoona, PA, Associate-DOT

CLEARFIELD SECTION

James V. Surkovich, Houtzdale, PA, Member-DOT
Kevin Kline, Clearfield, PA, Assoc-DOT

EAST PENN SECTION

Garry R. Marks, Allentown, PA, Associate-DOT

OFFICERS 1983-1984

Warren A. Miller President
Charles E. Luff 1st Vice President
William H. Allen, P.E. 2nd Vice President
Robert E. Yeager, R.S. Treasurer
Terrence D. Conner, P.E. Secretary
J. Dixon Earley, P.E.

Immediate Past President

DIRECTORS

3 years Arthur K. Banks, P.E.
David E. Baker
Matthew J. McTish, P.E.
Michael J. Suich

2 years Albert Bedard, P.E.
Daniel K. Bittler, P.E.
Frank Lopez, Jr.
Daniel V. Naranch

1 year David P. Jones, P.E.
G. Michael Tiani
Edward S. Nasuti, P.E.
Ronald E. Springman, P.E.

Address Corection Requested

Robert M. Sherr
205 Banner Street
EMMAUS PA. 18049



SECRETARY'S CORNER

It is difficult to believe that the 1984 Convention is only 2 months away. From the sounds of preparations under way, it will be another great one. The golfers should bring plenty of balls for the trees, sand and water at Champion Lakes.

It's a bit early but remember:

Officers Roster due June 15, 1984
Financial Statement due July 1, 1984

Watch for the next issue of the "Scanner" for exciting news about a new section.

See you at Greensburg!

DELAWARE VALLEY SECTION

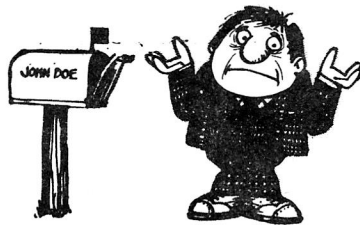
Martin T. Griffin, Bensalem, PA, Senior Contractor
Gary W. Robinson, P.E., Yardley, PA, Senior-Consultant
James J. Anderson, Philadelphia, PA, member-Contractor
Mark R. Stitz, Washington Crossing, PA, Member-Contractor
Eileen F. Lagan, Washington Crossing, PA Member-Contractor
John M. Nedley, Yardley, PA, Associate-Contractor
David C. Scafidi, Philadelphia, PA, Associate-Consultant
Joseph J. McNeill, Glenolden, PA, Senior-Contractor
John J. Peirce, Jr., P.E., Collegeville, PA Senior-Contractor
Alex S. Rogers, Lawrenceville, PA, Senior-Consultant
Alexander B. Smyther, P.E., Paoli, PA Consultant
Robert F. Wellner, P.E., Bethlehem, PA

CHANGE OF ADDRESS?

Please Note . . .

Postage is one of our most expensive items. It costs 25¢ for each letter we get back with the wrong address. Please help us by sending us your change of address when you move.

Thank you.



Senior-Consultant

N. CENTRAL W. VA. SECTION
Michael R. Pringle, Clarksburg, WV Senior DOT

PITTSBURGH SECTION

Jauaid M. Alui, McMurray, PA Senior-Consultant
James R. McDonald, Washington, PA Senior-Consultant
Vincent R. Borrelli, P.E., New Castle, PA Senior-Consultant
Gary T. Geddes, P.E., Zelienople, PA Senior-Consultant
L.C. Greenwood, Pittsburgh, PA Senior-Consultant
John W. Spires Jr., P.E., Lower Burrell, PA Senior-Consultant
Joseph H. Widmer, Rochester, PA Senior-Consultant
Warren H. Newberry, McKeesport, PA

MEMBERSHIP

Altoona	151
Charleston	161
Clearfield	61
Cuyahoga Valley	72
Delaware Valley	326
East Penn	116
Franklin	255
Harrisburg	279
North Central West Virginia	34
North East Penn	103
Ohio Valley	26
Pittsburgh	262
South West Penn	105
Western Reserve	71
Williamsport	127

TOTAL 2149

Professional Status 35%
Departments of Transportation 38%
Consultant 20%
Contractor 24%
Other 18%

Senior-Contractor
Roger e. Carrier, P.E., Pittsburgh, PA Senior-DOT
Charles J. Remmy II, Pittsburgh, PA Senior-DOT
John S. Gittins, Pittsburgh, PA, Member-DOT
Linda O. Rockwell, Uniontown, PA Associate-Consultant
James M. Salathe, Greensburg, PA Senior-Sales
Jack M. Hillman, McMurray, PA Senior-Producer
Robin Cole, Washington, PA, Associate-Contractor