

The A.S.H.E.

SCANNER

VOLUME XIX No. 6

THE AMERICAN SOCIETY OF HIGHWAY ENGINEERS

NOVEMBER 1983

President's Message

Dear Members and Friends:

My first letter was to thank you for your encouragement and support after attaining the office of president. However; with all the best wishes and etc., I must stay with the grass roots of this fine organization. The individual member whose supreme efforts have brought us to our present day organization.

It is my wish that the individuals who have worked so hard for the advancement of their sections will continue to do so in the future. A fine example is getting new members involved in section activities.

I feel we are starting a "new era", a turn around; however, remembering back to the 30s, the turn around was a very slow process. This organization has survived through what I feel is it's darkest days to celebrate it's first 25 years.

It is now time to start a re-building program, I'm sure each section has set into action a membership program for this anniversary year. We are expecting the National Membership Committee to present their recommendations for section awards at our October National Board Meeting.

I'm sure there are many potential members in each of the established section areas who have not been approached. Remember to consider those directly and indirectly connected with all methods of Transportation, the travelling public, those doing business along and within the right of ways and supporting elements. These are the members we need to maintain our present dues level to national.

Since this will be the last Scanner of the year, may I and my lady Janet, along with the other national officers and National Board of Directors and their families wish "you all" a festive, joyous and safe Holiday Season.

What nicer holiday present could you present ASHE than an application for

continued next column

Pittsburgh Section Promotes Plans For 'Early Bird' 1984 ASHE Convention

It's not too early to begin planning for our 1984 National Convention sponsored by the Pittsburgh Section. The convention, scheduled for May 17-20, 1984, will be held at the Greensburg Sheraton Inn located east of Greensburg, PA, on U.S. Route 30. The Pittsburgh Section Convention Committee, jointly chaired by Rudy Melani and Mike Tiani, promise to make the convention an event to be remembered.

Details of the conventions and registrations form will be mailed to all ASHE members in January, 1984. Anticipating a large attendance at the convention, the Convention Committee is providing for an Early Bird Registration. The form provides for an Early Bird Registration at a reduced fee of \$20.00, a \$5.00 savings over the standard registration fee. The Early Bird Registration applies only until December 31, 1983, so mail early to take advantage of this savings.

CONVENTION RUMORS

Time sure flies and before you know it the 1984 Convention will be upon us. Fortunately, the convention committee thought of this and is well on its way making final preparations for next years event. With the exception of a few hardened veterans of previous conventions, the committee people can well emphasize with everyone who has been involved with a convention as to the amount of work and advance planning needed for just a few days. We will do our best and, fol-

one or more of your friends. Take them along to your next meeting.

Warren Miller, President
Ebensburg, Pennsylvania

lowing ASHE tradition, keep our goals high.

In keeping with advance planning we have enclosed an "Early Bird Registration." We would appreciate your completing the form and mailing it as soon as possible. Don't procrastinate!

One further note, we will again entertain the idea of exhibits. The registrations for the exhibitors are going to be sent out very soon. Anyone interested in exhibiting or know of some, please call this writer at: 412-462-9300 or 412-745-1678 or mail a request to: 12 E. McNutt St., Houston, PA 15342. Will be limited to approximately 30 exhibits so Don't Hesitate.



EARLY BIRD REGISTRATION 1984 ASHE NATIONAL CONVENTION

May 17-20, 1984

Early Bird Registration Fee \$20.00
(Includes registrant and spouse/guest)

Name

Address

Phone

Send check to:

Wilbur Smith and Associates
500 McKnight Park Drive
Pittsburgh, PA 15237

CONVENTION HOST—PITTSBURGH SECTION



Harrisburg

Brian McCoola, P.E., Public Relations

Two well attended events heralded the start of the 1983-84 activity year locally. A joint ASHE-PSPE "Ham and Oyster Dinner" was held Friday, September 16 at Monaghan Township Fire Company facilities near Dillsburg.

Over 50 individuals were on hand for a fine evening of food and fellowship.

On October 3 the first regular monthly dinner meeting was held at Harding's in Camp Hill featuring an illustrated talk by Leonard C. Bellanca, Vice President, and Thomas E. Otto, Director of Business Development, for the construction firm of G.A.&F.C. Wgman of York, Pa.

The presentation was entitled "75 years of construction" and traced the growth of the Wgman firm from the first bridge constructed in 1908 to major construction and diversified activities completed in recent years.

New officers for the Harrisburg Section for the current year are serving as follows: Carl L. Spataro, P.E., President; Benjamin D. Rocuskie, P.E., 1st Vice President; Leonard C. Bellanca, P.E., 2nd Vice President; and Dale B. Mellott, P.E., Treasurer. The Board of Directors consists of James H. Little, P.E., William R. Butler, P.E., William M. Scott, P.E., Ronald L. Roberts, Thomas R. Benyo, P.E., and Robert E. Parks. Immediate Past President is Fred M. Eshleman.

The Harrisburg Section in 1983 initiated an annual Engineering Scholarship Program, with up to \$1000 to be awarded yearly to an incoming or current college engineering student pursuing an engineering degree. The Harrisburg Section's first recipient was Miss Tammie Rocuskie, currently a senior at Drexel University.

Application's for this year's scholarship will be available by December 1 according to William Scott who heads the Scholarship Committee. The award will be made in March. Applicants must be a dependent of a Section member.

The following members have achieved life membership status:

James R. Cutchall
Philip C. Hanford, Jr., P.E.
George C. Hertweck
Milford R. Moore
Donald J. Redlich, P.E.
John V. Rignani, P.E.
Donald C. Rimmer
Dominic M. Stello

South West Penn

Frank Petrarca, Public Relations

The Annual Steak Fry was held on August 24th at the Isaac Walton Park near Farmington. Members and guests were treated to outdoor cooking prepared by the faithful chefs headed by Bill Graham. Solomon & Teslovich Construction Co. provided refreshments and the raffle for the well attended fete. A short meeting was conducted by President Frank Petrarca. Golf was played at a nearby course in the afternoon. Tom Brado gave a good account of the duffer's accomplishments. The rest of the evening was spent relaxing and talking with fellow members.

On Wednesday, September 28th, our section held its first meeting of the new season at Jimmy's Restaurant, Old Rt. 119 Scottdale. There was a good turnout for another great family-style dinner. Our thanks went to Gulisec Construction Co. for sponsoring the "happy hour". The speaker for the evening was Joe Lang, economist for Pittsburgh National Bank, whose topic was "Economic and Financial Environment for 1984". His enlightening message was an account of national, world, and local Western Pa. economic situations. A number of questions from the members and guests were readily answered by Mr. Lang to almost everyone's satisfaction. †

New Members

NEW MEMBERS

ALTOONA SECTION

Donald L. Kicher, Somerset, Pa., Sr. Consultant
Herbert T. Tiffany, Somerset, Pa., Sr. Consultant
Craig L. Weaver, P.E., Johnstown, Pa., Sr. Consultant
Charles F. Welker, P.E., Altoona, Pa., Sr. Consultant
Mitzi A. Veisz, Altoona, Pa., Associate, DOT
Richard L. Fox, P.E., Hollidaysburg, Pa., Sr. DOT
Robert E. Halstead, Bedford, Pa., Associate DOT

SOUTHWESTERN PA SECTION

Frank J. Rischitelli, Belle Vernon, Pa.

DELAWARE VALLEY SECTION

Carol J. Lugar, Cheltenham, Pa. Associate DOT
Armen P. Nassib, Newton Square, Pa., (reinstated) Sr., Contractor
Jack C. Regan, Philadelphia, Pa. (reinstated) Sr. Prod.
Randy Thomas, North Hills, Pa., Associate Other
Kanti P. Mitra, P.E., Philadelphia, Pa. Sr. Consultant
James J. Rowan, P.E. Springfield, Pa. Sr. PennDOT

FRANKLIN SECTION

George A. Slagle, Jr., P.E. Dayton, Pa. Sr. Consultant
Arlan M. Vines, Kingsville, OH Sr. Contractor
Samuel A. Saeli, Franklin, Pa. (reinstated) Associate - DOT
Cecil E. Smith, Jr., Stoneboro, Pa. Senior DOT

PITTSBURGH SECTION

Robert E. Jacobs, P.E., Bethel Park, Pa. Senior - Consultant
John V. Miller, Jr., P.E., Allison Park, Pa. Senior - Consultant

HARRISBURG SECTION

Wm. L. Johnson, Sr., Mechanicsburg, Pa. Senior - Consultant
Donald C. Englebreth, P.E., York, PA, Sr. Consultant

WESTERN RESERVE SECTION

John E. Chizmar, Youngstown, OH Senior DOT
John L. Fukon, P.E., Youngstown, OH, Senior - DOT

CUYAHOGA VALLEY SECTION

James S. Jankowski, Medina, OH, Associate - Other
David J. Celik, P.E., Akron, OH, Senior - Municipal
James J. Cooper, R.S., Canton, OH, Senior Consultant
Harley W. DeHoff Jr., East Canton, OH, Sr. DOT
Robert L. Helm, R.S., Louisville, OH, Sr. - Utility

LARSON PROMOTES COMMISSION CUTBACKS

The Thornburgh administration recently indicated that it will impose, in effect a hiring freeze at the Pennsylvania Turnpike Commission.

Transportation Secretary Thomas D. Larson, the only Thornburgh appointment to the commission, said: "I will not approve any further hires for the

continued on next page

North East Penn

Jerry Ceccoli, Public Relations

The 1983-84 year got off to a roaring start with a September Ladies Night conducted at Jay's Restaurant. The meeting was presided over by the Section's Vice President John Kolander. John arranged the entertainment for the evening which resulted in a surprise program that those in attendance will have a hard time forgetting.

October 11 was the date of our second meeting. The site of the meeting was Aldino's Marnor in Wilkes Barre. Louis O'Brien, Executive Vice President of SUR-TECH, Inc., presented a slide program on Low Energy Paving Systems.

From the private files of.....

ANONYMOUS AMBIGUITIES

Poncho has enrolled in an exercise class to improve his figure. A reliable source tells us that he is so interested in new figures he always places himself in the first row - close to the instructress.

Harp: No one believes your excuse for arriving late at the September meeting. How many times can the alarm clock fail?

Big John invites everyone to his house to see his wife's new birthday present. Please bring your own laundry.

Shagger has decided to return to school this fall. His choice of classes was computers or basket weaving - unfortunately, basket weaving was full. †

NEW MEMBERS

Peter P. Narsavage, Senior, DOT
Robert J. Horutz, Senior, DOT
Charles M. Mattei, Senior, DOT
William Oehler, Senior, DOT
David G. Scott, Associate, DOT
Ronald W. Jones, Senior, DOT



NORTH EAST PENN SECTION
September "Ladies Night".

September "Ladies Night".

September "Ladies Night".





NORTH EAST PENN SECTION
September "Ladies Night".



Cuyahoga Valley

Thomas G. Criswell, Public Relations

The Cuyahoga Valley Section feels confident that the next new section of ASHE will be in Columbus, Ohio, after which, each District of ODOT will follow, with some hard work by our new section chairman Chuck Luff. †

CUYAHOGA VALLEY SECTION

Warren J. Smith, the Director of the Ohio Department of Transportation, receiving his certificate of membership in ASHE and the ASHE pin, presented to him by Charles E. Luff 1st Vice President of ASHE.



Frank Rischer and Tom Criswell, officers of the Cuyahoga Valley section assisting in the presentation of membership to Warren J. Smith.



East Penn

Bart Snyder, Public Relations

EAST PENN SECTION

Matthew J. McTish, left, program chairman for the evening, presenting a token of appreciation to Mr. Robert B. Anderson, Engineering Manager of GAI Consultants, Inc., after his program presentation at the regular dinner meeting of the East Penn Section on October 11, 1983.



East Penn Section Charter member Mike Todd died suddenly on September 13, 1983. Mike was one of our most devoted members, and never missed a regular dinner meeting unless because of illness or other unforeseen cause. Also, he and his wife, Bessie, have never missed attending a National Convention since 1967. His ready wit and humor will be truly missed by all who knew him.

Thirty seven members and guests attended the first fall regular dinner meeting of the section held on September 13, 1983, at Trainer's Restaurant in Lehigh-ton.

Mr. Matthew F. Mazza, District Engineer for Engineering District 5-0 of the Pennsylvania Department of Transportation was the speaker of the evening. Matt spoke about future Department programs and the extent to which the Department is now maintenance oriented. He explained that PennDOT is doing a good job which is demonstrated by the confidence of the Legislators in their passage of four tax increases for highway work during this administration. Matt talked further about the maintenance programs and the types of work that will be contracted.

Twenty members and guests attended the regular dinner meeting of the section held on October 11, 1983, at Walp's Restaurant in Allentown.

Mr. Matthew J. McTish, program chairman of the evening, introduced Mr. Robert B. Anderson, Ph.D., Engineering Manager of GAI Consultants, Inc., of Pittsburgh, Pa., who gave a very interesting talk and slide presentation relating to the reconstruction of I-376, a six mile portion

of the six lane parkway just east of the city of Pittsburgh. Mr. Anderson discussed in detail the solution of the mammoth traffic problems encountered during construction operations on this heavily travelled highway, which took two years to complete.

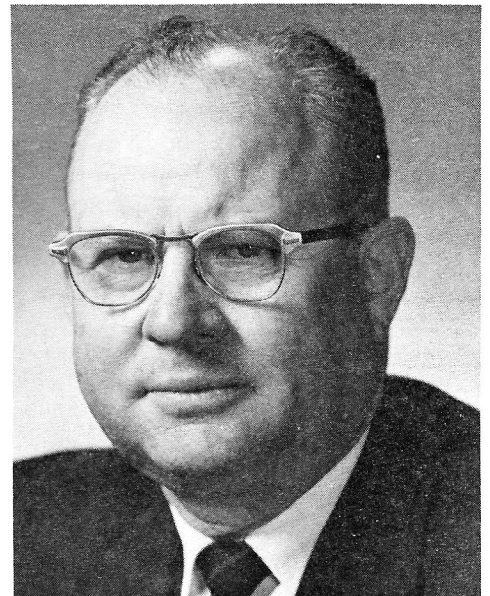
Of special interest to all in attendance at the meeting was the same situation that will face local officials in the reconstruction of Traffic Route 22, between Allentown and Easton, also Traffic Route 309, which will accommodate all I-78 traffic in the near future.

JAMES M. MONTGOMERY

East Penn Section Charter Member Jim Montgomery has retired after a long but interesting 55 years of work.

The following is a resume of his affiliations during that period of time. Jim started work with the Penna. Dept. of Highways in Dist. 3, Williamsport, on July 5, 1928, and served as a draftsman, survey corps, and a construction inspector, resigning on Oct. 5, 1939. He then joined F.D. Kessler, Inc., of Northumberland, Pa., as a job superintendant, until March 15, 1953. It was at that time when Route 22 was being built that the Bethlehem Steel Corp. had an opening for a Sales Agent in the stone and slag division, a position which he took and held until he became 65 years old, leaving on Oct. 1, 1974. Jim then joined the construction firm of J. Ciccone and Sons, Inc., of Bath, Pa., where he continued working until June 1, 1983, when he completely retired.

While living in Harrisburg and working for the Bethlehem Steel Co., Jim first joined the American Society of Highway



JAMES M. MONTGOMERY

Engineers in 1953. In May, 1964, the East Penn Section was organized, and Jim then transferred to this Section. He has served as Program Chairman several times and as President of the organization 1968-69.

Since completely retiring, Jim is enjoying golfing, swimming, and watching the stock market closely. He is enjoying good health, and we all wish him a long and well deserved retirement.

As a fellow who threatened to jump from a bridge is led away, a police officer asked, "How did you talk him out of jumping, Pastor?"

Pastor: "I told him about the chemical plants upstream."

Altoona

Glenn W. Keiper, P.E.
Gary L. Wisor, P.E., Public Relations

ANNUAL PICNIC HELD

The Altoona Section concluded its summer recess with the annual picnic on August 19 at Klein Immergrun. Klein Immergrun, formerly a portion of the Charles Schwab Estate, is owned by L. Robert Kimball and Associates, Consulting Engineers.

Those in attendance enjoyed a spread of sumptuous food, an abundance of brew, numerous activities, and good fellowship with members and guests. The activities included golf, volleyball, tennis and cards.

The weather was excellent, causing many to take advantage of a refreshing dip in the pool.

SEPTEMBER MEETING

The Altoona Section held its September meeting at the Creekside Inn, near Leamersville.

The speaker for the evening was Mr. William Kozy of Michael Baker, Jr., Inc. Mr. Kozy discussed the New River Gorge Bridge, near Fayetteville, West Virginia.

On October 22, 1977, the New River Gorge Bridge was dedicated and opened to traffic, culminating four years of construction made possible by over 30,000 man-hours of design. The prime contractor for construction of the \$33.9 million project was the American Bridge Division of U.S. Steel while the design engineer was Michael Baker, Jr., Inc.

The bridge, as pointed out by Mr. Kozy, is the world's longest steel arch bridge, featuring a 1700-foot main span. The 3000-foot structure (including approaches) is 876 feet high. This, the highest structure east of the Mississippi River, contains approximately 43 million pounds of structural steel.

Mr. Kozy further pointed out some of the many unique construction techniques utilized and associated problems encountered. For example, two 50-ton trolleys traversed twin cables suspended from four 330-foot towers to convey structural members weighing as much as 93 tons. Also, a cement-fly ash grout was used to stabilizer sand-gravel cones filling mined-out areas below and around the bent footings.

While the bridge is massive in its own right, aesthetics were not ignored. The COR-TEN steel will oxide with age pro-

ducing a dark russet color which blends with the natural beauty of the terrain. Further, no painting is required yielding a low-maintenance installation.

The New Enterprise Stone and Lime Company sponsored the meeting.

MEMBERSHIP NEWS

In continuing with tradition, a membership contest is being considered for this year.

Certificates and pins were presented to the following new members at the September meeting:

Donald Kicher, Craig Weaver, Chuck Welker.

Also, Karl Fleming was welcomed as a transfer from Williamsport Section. †

Franklin

L. K. Murphy, Public Relations

Summer seemed to be too short for the Franklin Section of ASHE.

Our summer meetings were, for the most part, relaxed and informal, with the competition on the golf course ranging from tough to (?) tired. We had meetings with no "formal" speakers scheduled and (not surprisingly) we found that the best "speakers" are the ASHE members themselves. Picnics and dinners provided conversations ranging from the business side of engineering problems, to the relaxing side of whose kid was on the best summer baseball team.

The gathering at Riverside Golf Course, Cambridge Springs, did have a special speaker in the form of former pro football player, Charley Pittman. Pittman was a Penn State All American, played for the Baltimore Colts and is currently running Mine R. T. Enterprises in Erie, PA.

Pittman's talk centered around the fact that he was taught at Penn State that football was the "means to an end"; education was the primary reason for being at Penn State. Statistics were cited to show that the goal of entering professional sports is not a realistic one for every child growing up. Indeed, with the odds that competitors face, you'd probably have a better chance to hit the Pennsylvania Lottery than end up with a professional sports career.

Pittman felt that the time he spent on the football field provided an opportunity for learning more than just playing patterns. At Penn State, you were expected to show control, respect, and excuses were simply not accepted. Losing is a

learning experience and you were expected to look at the loss and be able to find the lesson. Individual learning might be stressed, but if the team doesn't pull together, you won't win. "It's like learning about life," said Pittman, "it's not who you are or where you are right now that counts -- but what you say and do in the future."

The problem of drugs in professional sports was also discussed. Pittman stated that he felt a lot of players drawn into drug use are on what he termed a "rich man's high" where they've gotten involved with too much money being available too quickly and they feel the pressures to live life "in the fast lane".

Charley's personal experiences with the game of professional football has led him to believe that equipment should be taken away from players instead of increased. He spoke of cases where equipment was used as a weapon and players went into games with only the idea of knocking the other team out with injuries.

A number of experiences related by Pittman seemed to emphasize his attitudes about life...he told of catching his first football pass from Johnny Unitas and dropping the pass because he was worried about dropping it -- instead of thinking positive, he thought about the negative -- and sure enough, there it was. Charley Pittman also believes in developing your own individual strengths but stressed that winning in any area of your life takes team work.

Anyone in the Franklin ASHE area who would be interested in attending interesting meetings and having a good meal in addition are reminded of the dates of our future meetings:

November 16 - Erie
January 18 - Franklin
February 15 - Franklin
March 14 - New Castle
April 18 - Meadville
May 16 - Tionesta

Further information on exact locations and directions may be obtained by contacting either President Dick Lugg, or Vice President Tim Haslett at Franklin PennDOT (814) 437-4200. †



Adam and Eve were walking in the Garden of Eden when she suddenly asked,

"Adam, do you love me?"

"Who else?" he shrugged.

Harrisburg

Brian McCoola, P.E., Public Relations

Two well attended events heralded the start of the 1983-84 activity year locally. A joint ASHE-PSPE "Ham and Oyster Dinner" was held Friday, September 16 at Monaghan Township Fire Company facilities near Dillsburg.

Over 50 individuals were on hand for a fine evening of food and fellowship.

On October 3 the first regular monthly dinner meeting was held at Harding's in Camp Hill featuring an illustrated talk by Leonard C. Bellanca, Vice President, and Thomas E. Otto, Director of Business Development, for the construction firm of G.A.&F.C. Wagman of York, Pa.

The presentation was entitled "75 years of construction" and traced the growth of the Wagman firm from the first bridge constructed in 1908 to major construction and diversified activities completed in recent years.

New officers for the Harrisburg Section for the current year are serving as follows: Carl L. Spataro, P.E., President; Benjamin D. Rocuskie, P.E., 1st Vice President; Leonard C. Bellanca, P.E., 2nd Vice President; and Dale B. Mellott, P.E., Treasurer. The Board of Directors consists of James H. Little, P.E., William R. Butler, P.E., William M. Scott, P.E., Ronald L. Roberts, Thomas R. Benyo, P.E., and Robert E. Parks. Immediate Past President is Fred M. Eshleman.

The Harrisburg Section in 1983 initiated an annual Engineering Scholarship Program, with up to \$1000 to be awarded yearly to an incoming or current college engineering student pursuing an engineering degree. The Harrisburg Section's first recipient was Miss Tammie Rocuskie, currently a senior at Drexel University.

Application's for this year's scholarship will be available by December 1 according to William Scott who heads the Scholarship Committee. The award will be made in March. Applicants must be a dependent of a Section member.

The following members have achieved life membership status:

James R. Cutchall
Philip C. Hanford, Jr., P.E.
George C. Hertweck
Milford R. Moore
Donald J. Redlich, P.E.
John V. Rignani, P.E.
Donald C. Rimmer
Dominic M. Stello

South West Penn

Frank Petrarca, Public Relations

The Annual Steak Fry was held on August 24th at the Isaac Walton Park near Farmington. Members and guests were treated to outdoor cooking prepared by the faithful chefs headed by Bill Graham. Solomon & Teslovich Construction Co. provided refreshments and the raffle for the well attended fete. A short meeting was conducted by President Frank Petrarca. Golf was played at a nearby course in the afternoon. Tom Brado gave a good account of the duffer's accomplishments. The rest of the evening was spent relaxing and talking with fellow members.

On Wednesday, September 28th, our section held its first meeting of the new season at Jimmy's Restaurant, Old Rt. 119 Scottdale. There was a good turnout for another great family-style dinner. Our thanks went to Gulisec Construction Co. for sponsoring the "happy hour". The speaker for the evening was Joe Lang, economist for Pittsburgh National Bank, whose topic was "Economic and Financial Environment for 1984". His enlightening message was an account of national, world, and local Western Pa. economic situations. A number of questions from the members and guests were readily answered by Mr. Lang to almost everyone's satisfaction. †

New Members

NEW MEMBERS

ALTOONA SECTION

Donald L. Kicher, Somerset, Pa., Sr. Consultant
Herbert T. Tiffany, Somerset, Pa., Sr. Consultant
Craig L. Weaver, P.E., Johnstown, Pa., Sr. Consultant
Charles F. Welker, P.E., Altoona, Pa., Sr. Consultant
Mitzi A. Veisz, Altoona, Pa., Associate, DOT
Richard L. Fox, P.E., Hollidaysburg, Pa., Sr. DOT
Robert E. Halstead, Bedford, Pa., Associate DOT

SOUTHWESTERN PA SECTION

Frank J. Rischitelli, Belle Vernon, Pa.

DELAWARE VALLEY SECTION

Carol J. Lugar, Cheltenham, Pa. Associate DOT
Armen P. Nassib, Newton Square, Pa., (reinstated) Sr., Contractor
Jack C. Regan, Philadelphia, Pa. (reinstated) Sr. Prod.
Randy Thomas, North Hills, Pa., Associate Other
Kanti P. Mitra, P.E., Philadelphia, Pa. Sr. Consultant
James J. Rowan, P.E. Springfield, Pa. Sr. PennDOT

FRANKLIN SECTION

George A. Slagle, Jr., P.E. Dayton, Pa. Sr. Consultant
Arlan M. Vines, Kingsville, OH Sr. Contractor
Samuel A. Saeli, Franklin, Pa. (reinstated) Associate - DOT
Cecil E. Smith, Jr., Stoneboro, Pa. Senior DOT

PITTSBURGH SECTION

Robert E. Jacobs, P.E., Bethel Park, Pa. Senior - Consultant
John V. Miller, Jr., P.E., Allison Park, Pa. Senior - Consultant

HARRISBURG SECTION

Wm. L. Johnson, Sr., Mechanicsburg, Pa. Senior - Consultant
Donald C. Englebreth, P.E., York, PA, Sr. Consultant

WESTERN RESERVE SECTION

John E. Chizmar, Youngstown, OH Senior DOT
John L. Fukon, P.E., Youngstown, OH, Senior - DOT

CUYAHOGA VALLEY SECTION

James S. Jankowski, Medina, OH, Associate - Other
David J. Celik, P.E., Akron, OH, Senior - Municipal
James J. Cooper, R.S., Canton, OH, Senior Consultant
Harley W. DeHoff Jr., East Canton, OH, Sr. DOT
Robert L. Helm, R.S., Louisville, OH, Sr. - Utility

LARSON PROMOTES COMMISSION CUTBACKS

The Thornburgh administration recently indicated that it will impose, in effect a hiring freeze at the Pennsylvania Turnpike Commission.

Transportation Secretary Thomas D. Larson, the only Thornburgh appointment to the commission, said: "I will not approve any further hires for the
continued on next page

OFFICERS 1983-1984

Warren A. Miller President
Charles E. Luff 1st Vice President
William H. Allen, P.E. 2nd Vice President
Robert E. Yeager, R.S. Treasurer
Terrence D. Conner, P.E. Secretary
J. Dixon Earley, P.E.

Immediate Past President

DIRECTORS

3 years Arthur K. Banks, P.E.
 David E. Baker
 Matthew J. McTish, P.E.
 Michael J. Suich

2 years Albert Bedard, P.E.
 Daniel K. Bittler, P.E.
 Frank Lopez, Jr.
 Daniel V. Naranch

1 year David P. Jones, P.E.
 G. Michael Tiani
 Edward S. Nasuti, P.E.
 Ronald E. Springman, P.E.

Address Corection Requested

Robert M. Sherr
205 Banner Street
EMMAUS PA. 18049



SECRETARY'S CORNER

This issue of the Scanner was mailed using the computerized mailing system. We feel the addresses are accurate since they were checked by most sections for incorporation into the ASHE Directory that will be printed before the end of this year. Please check with all of your section members to insure they are receiving the Scanner. If they are not, Please notify me promptly.

All address changes should be sent to me so that I can have the change made in the master address file. I will also notify GANCOM who maintains the computerized address file.

Respectfully,
Terry Conner

Turnpike until we are satisfied that the Turnpike has eliminated waste and duplication, as has been done throughout the rest of state government under the governor's jurisdiction."

Larson's decision was implemented at a recent meeting of the commission.

Larson is presently one of three members serving on the Turnpike Commission. Chairman Jack Greenblatt, who was appointed by former Gov. Milton Shapp and whose term expired June 4, 1981 -- over two years ago -- and Democrat Peter J. Camiel are the other two members of the five-member commission.

With a three-member commission, Larson's vote is necessary to approve all actions, including new hires.

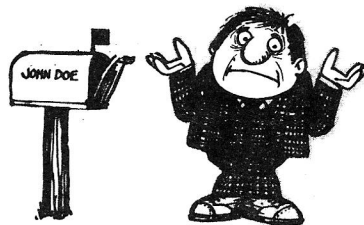
"Gov. Thornburgh has demonstrated

CHANGE OF ADDRESS?

Please Note . . .

Postage is one of our most expensive items. It costs 25¢ for each letter we get back with the wrong address. Please help us by sending us your change of address when you move.

Thank you.



that state government can be more effective with fewer employees," said Larson. "Over the past four and one-half years the state payroll has been reduced by 8,500 positions. At the Department of Transportation, the payroll has been reduced by more than 1,800 since January 1979. By contrast, the Turnpike Commission payroll during that period has remained virtually unchanged. There is no reason why the Pa. Turnpike should not undergo a productivity assessment when the rest of Pennsylvania government has so dramatically tightened its belt."

"The Department of Transportation operates and maintains the 44,800 mile state highway system with 13,338 employees or about three and one-third miles of road per employee," Larson pointed out. "The commission operate and maintains the 470 mile Turnpike system with 1,860 employees, just one-

MEMBERSHIP

Altoona	150
Charleston	151
Clearfield	57
Cuyahoga Valley	70
Delaware Valley	302
East Penn	115
Franklin	275
Harrisburg	269
North Central West Virginia	43
North East Penn	97
Ohio Valley	26
Pittsburgh	234
South West Penn	102
Western Reserve	61
Williamsport	125
TOTAL	2,077

DOT	38%
Consultant	19%
Contractor	21%
Other	22%
Professional	34%

quarter mile per employee.

"The people of Pennsylvania must get value for the Turnpike tolls," said Larson. "I will continue to insist on item-by-item review of all personnel actions until fully convinced that the Commonwealth's citizens are getting a dollar's worth of service for every toll dollar paid. We are in critical times with respect to economic recovery in Pennsylvania. The Turnpike and all other elements of economic enterprise in the Commonwealth must be held to the same standard: one of doing more with less."