

# ***The A.S.H.E.*** ☆☆☆☆☆☆☆☆☆☆☆☆☆☆☆☆☆☆☆☆☆☆☆☆☆☆☆☆ ***SCANNER***

VOLUME XIX, No. 2

THE AMERICAN SOCIETY OF HIGHWAY ENGINEERS

NOVEMBER 1982

## **ALTOONA'S NEW BOARD MEETS**

Donald J. Snively, P.E., Public Relations

The Altoona Section's newly elected board of directors held its first meeting on June 7 in the EADS Consulting Engineers' conference room in Altoona.

John A. Frank of Hollidaysburg, David G. Willis of Rush, New York, and Donald J. Snively of Roaring Spring will serve one year terms on the section's board of directors.

William J. Wilson, John E. Young and Robert Grannas, all of Hollidaysburg, will serve two (2) year terms on the board. Forrest E. Cameron of Roaring Spring, Wayne B. Hammond of Hollidaysburg and Frank P. Huttle of Ebensburg, will serve three (3) year terms as directors.

William R. Gohn, Section Secretary, presented the membership report showing an increase of twenty (20) members in 1981-82. He also noted that the 1981-82 attendance at section meetings has increased 50% over the previous year.

Due to the success of the membership contest held by the section in 1981-82, the board decided to conduct a similar contest this year.

The contest will run until April 1983 and will provide first, second and third prizes of \$30, \$20 and \$10, respectively, to the members sponsoring the most new members.

The board named the following committee chairmen: Donald Fix, immediate past president, Nominating Committee; Robert Hildale, Program Committee; Donald Snively, Public Relations Committee; John Young, Legislative Action and Technical Committees; William McKee, Auditing Committee; David Stiffler, Picnic Committee; Samuel Callisto, Membership Committee; and Forrest Cameron, Constitution and Bylaws Committee.

In order to allow for more discussion of board business, the board decided to hold at least quarterly meetings, in addition to those held at the monthly membership meetings.

## **ALTOONA KICKS-OFF 1982-83 SEASON**

The Altoona Section kicked-off its 1982-83 meeting schedule with its annual picnic which was held on August 13, 1982, at Klein Immergrun near Loretto, PA.

Klein Immergrun is owned by L. Robert Kimball, of L. Robert Kimball and Associates, Consulting Engineers, Ebensburg, PA. It was formerly a portion of the Charles Schwab Estate.

In the afternoon the golfers from the section played the Immergrun golf course. The non-golfers played volleyball, tennis, pitched horseshoes and, of course, played cards. Dinner included chicken, hot sausage and meatball sandwiches, baked beans, cold cuts and salad.

The picnic got the 1982-83 season off to an enthusiastic start. It looks like the section will have an active and energetic year.

Robert Hildale, of Altoona and Montoursville, is the 1982-83 program chairman for the section. He has announced the following tentative meeting schedule:

Sept. 22 - New Enterprise Stone and Lime Co., Inc., New Enterprise, PA

Oct. 20 - Holloway Construction Co., Wixom, MI

Nov. 17 - Vipond and Vipond, Inc., Hollidaysburg, PA

Jan. 19 - Maximon Machine Co., Altoona, PA

Feb. 16 - Erdman, Anthony & Assoc., Rochester, NY

March 16 - EADS Consulting Engineers of Altoona, PA and Eagle Concrete Products of Somerset, PA

April 20 - L. Robert Kimball Consulting Engineers, Ebensburg, PA

May 18 - Leslie L. Whitaker & Son, Windber, PA

## **SHORT TAKES . . . .**

They are scheduled to be electrocuted until they are dead on October 6.—*Citrus County (Fla.) Chronicle.*

## **PITTSBURGH SECTION**

The Pittsburgh Section wishes to extend a hardy congratulations to the Altoona Section on their hosting the 1983 Convention. Being the hosts of the 1984 Convention, the Pittsburgh Section will have a difficult time providing the accommodations to compare to the beauty of Bedford Springs. We do intend, however, to have the largest attendance for the "ice breaker", and hope all sections take this challenge to make this convention the best yet.

The June meeting of the Board of Directors was greeted with an unfortunate surprise of the resignation of Dick Wough as the incoming Pittsburgh Chapter president. An early retirement and desire to travel dictated this very difficult decision. After his many years of dedication and contribution to the Society, we certainly wish him well.

In spite of the temporary setback Mr. David Rose, the new chapter president, has performed like an old pro, considering his taking this position one year premature. The support of the Chapter officers, Directors and members are with him. Good Luck!!!

Our initial meeting for the 82-83 season welcomed as a guest speaker an A.S.H.E. member of the Harrisburg Section. Mr. Ronald Cominsby of the Bureau of Testing enlightened everyone on the "Restricted Performance Specification." An informative, entertaining talk and slide presentation was enjoyed by members of A.S.H.E. and A.B.C.S. in the joint meeting held at the Parkway Center Terrace.

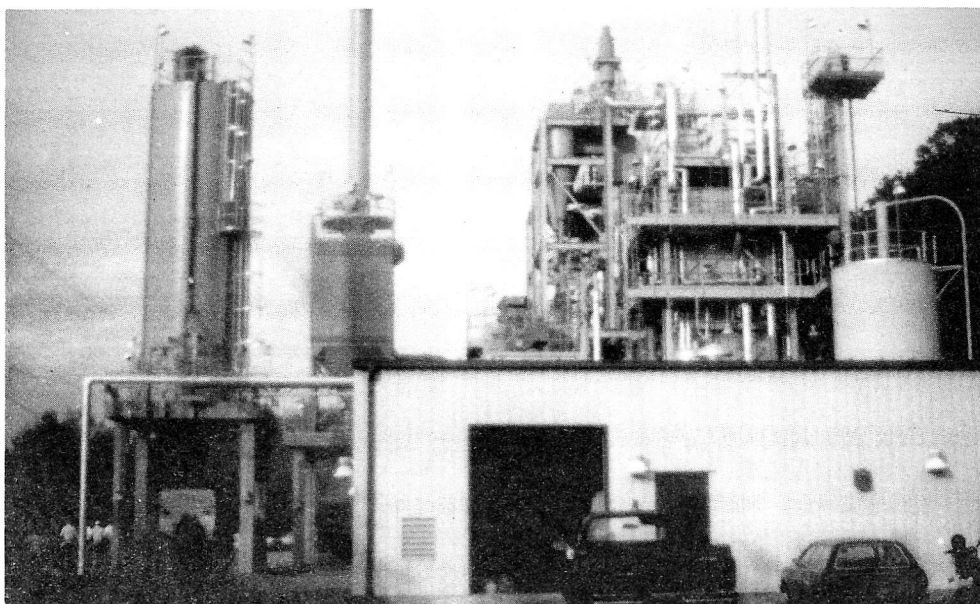
We appreciate Mr. Cominsby for his time, effort and especially his attitude in searching for the right answers. Not only is he a credit to the Department but the industry as well.

Our forthcoming meetings include:

Oct. 22, 1982 Past Presidents Dinner and Dance, Edgewood Country Club

Nov. 10, 1982 Parkway East Project I-

continued on page three



## WILLIAMSPORT SECTION

James A. Kendter, P.E., Public Relations

The Williamsport Section held its annual field trip on May 21, 1982, touring the Shamokin Area Industrial Corporation's fluidized bed waste fuel boiler plant. This \$10 million demonstration project, sponsored by the U.S. Department of Energy produces high pressure saturated steam by burning anthracite culm. The steam is sold to a nearby paper manufacturer.

Fluidized bed combustion has been shown to be a good technique for burning waste fuels in a cost effective and environmentally acceptable manner. The anthracite culm is injected and burned in an air suspended bed of ash and ground limestone. High heat release rate, high combustion efficiency and excellent heat transfer to the in-bed steam tubes are achieved by the process. The plant produced 23,400 pounds/hour of saturated steam at 200 psig.

Following the plant tour and dinner at Cox's Restaurant, a short business meeting and election of officers was held for the coming year. The following officers were duly elected and sworn in for the 1982-83 fiscal year:

President Lee Eberhart, Faylor Middle Creek, Inc.

1st Vice President Robert Webb, Faylor Middle Creek, Inc.

2nd Vice President Jim Kendter, PennDOT  
Secretary Ronald Springman, PennDOT

Treasurer Atwood Welker, PennDOT

The Section's annual clam steam was held on August 6, 1982 at the Sunbury Grouse Club in beautiful downtown Barbours, PA. Over 100 members and guests were in attendance. Good food, good drink and good fellowship were the order. As usual, the PennDOT volleyball team soundly defeated the contractor's team. Attendees were treated to the Penn State 1981 Football Highlights film.

Mr. Herb Oliveri, Chief of TORTS Litigation in the Attorney General's Office provided a timely and informational meeting concerning the litigation process at the September 21, 1982 meeting. In

continued on next page

## WILLIAMSPORT SECTION

Shamokin Industrial Corporation's Fluidized Bed Combustion Plant.

Member's intently studied facilities Anthracite culm bank in background.

Dave Kuhns, Dave Bowers and Dick Howe in plant control room.





1978, the State Legislature waived sovereign immunity in specific categories. The State has over 1,600 cases pending. We thank Mr. Oliveri for an interesting evening.

We look forward to another good year. Planned programs include the use of fly ash in highway construction by the American Fly Ash Association; a documentary film on the Brooklyn Bridge; Computer Aided Drafting; construction of the new Hepburn Street Dam on the Susquehanna River and a joint meeting with other engineering societies in conjunction with National Engineers Week.

#### WILLIAMSPORT NOTES:

The convention photograph of our Northwest Penn Brothers was submitted into a summer fun photo contest and won an honorable mention prize. This photograph appeared on page 19 of the July, 1982 Scanner.

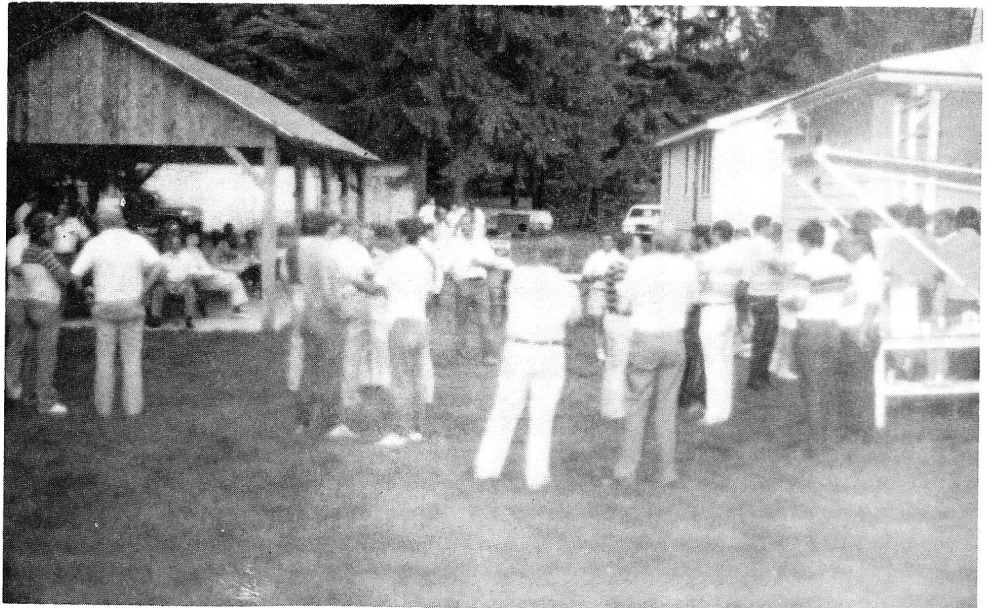
Mr. William O. Faylor, Jr., President of Faylor Middle Creek, Inc., was killed in a fatal automobile accident on Oct. 9 1982. Mr. Faylor had been a member of ASHE since 1965. Our deepest sympathy is extended to his family. Bill will be missed in future Section activities. †

#### WILLIAMSPORT SECTION

Williamsport Section Annual Clam Steam, Barbours, PA.

PennDOT 15 - Contractors 0 (as usual).

This guy has the capability of doing it, too!



#### Pittsburgh Section

cont. from page one

376, Behind the Scene. Speaker - Arthur B. Hopperstead, P.E., Vice President, Trumbull Corp.

Dec. 8, 1982 Personal Investments for the 80's. Reyman R. Branting, P.E., A. G. Edwards.

Jan. 17, 1983 Construction Management Robert H. Leiffy, P.E. Mellon Stuart Co.

In closing we wish to announce that the Pittsburgh Chapter will be hosting a hospitality suite at the 83 Convention. We cordially invite everyone to stop by and get acquainted. †



## DELAWARE VALLEY SECTION

A. J. MacLennan, P.E., Public Relations

The Holiday Inn in King of Prussia was the site of the Delaware Valley Section's first meeting of the 1982-1983 season on September 15, 1982.

We were privileged to have as our guest speaker, Mr. Philip M. Caldwell, Assistant General Manager, Planning and Construction Division, Southeastern Pennsylvania Transportation Authority.

Mr. Caldwell is a graduate of the United States Merchant Marine Academy and served as an engineering officer in the United States Navy.

He was employed by the general Electric Company for twenty years in various design and construction management assignments prior to joining Septa in 1972, as Manager of their Facilities Department. In early 1980 he was appointed Assistant General Manager for Planning and Construction.

Mr. Caldwell made a slide presentation that portrayed completed, current and proposed projects and programs undertaken by Septa. Two of the larger projects currently under construction included the Center City Commuter Rail Connection and the Airport High Speed Line, both in Philadelphia. The magnitude of these projects is \$320 million and \$100 million respectively.

Another major capital expenditure being undertaken by Septa is the acquisition of new rolling stock. For example, since 1980 Septa has purchased 300 new advanced planning buses. During 1983, 1984 and 1985, they plan to purchase additional buses from the Pennsylvania State Pool for a total number of 1000 out of 1400, the largest purchase in the country.

A new maintenance facility nearing completion at Woodland Avenue, allows inspections of the rolling stock on a daily basis.

On the Broad Street Subway Line, Septa has plans for renovations of ten stations to be started in 1983. In addition, they anticipate delivery of 125 new cars by the end of 1982. Some of these cars are now undergoing test runs. Mr. Caldwell pointed out that in a conversation with an individual of the Metropolitan Transit Authority, the cars being used on Broad Street are 55 years old, to which he replied, "they have museum pieces that aren't that old."

The funding for this ambitious Septa program is provided 80% by Federal money, 16-2/3% by State money and 3-1/3% by local monies.

Other programs that Septa contem-

plates include new platforms at Suburban Station, a \$10 million upgrading program for power and a \$10 million upgrading of the Red Arrow Division in Delaware County along with Paratransit facilities for the handicapped.

We appreciate Mr. Caldwell taking time from his obviously busy schedule to talk to us and enlighten our membership on the Septa programs. †

## NEW MEMBERS

### WILLIAMSPORT SECTION

Philip H. Bower, Turbotville, PA, Senior-equipment

Daniel F. Schultz, Danville, PA, Senior-Prod.

Timothy S. Bower, Turbotville, PA, Associate-equipment

Ronald G. Stabl, Port Trevorton, PA, Senior-DOT

William E. Wagner, P.E., White Deer, PA, Senior-DOT

### NORTH EAST PENN SECTION

Albert A. Fink, Shickshinny, PA, Senior-DOT

Thomas E. McGovern Jr., Ashley, PA, Senior Contractor

Robert L. Williams, Montaintop, PA, Senior-Contractor

### SOUTHWESTERN PA SECTION

Samual Hill, New Kensington, PA, Senior-Mat'l Prod.

### PITTSBURGH SECTION

Albert DiCenzo, Coraopolis, PA, Senior-Materials

Kevin J. Dixon, Pittsburgh, PA, Member-Municipal

Albert J. Sciulli, Pittsburgh, PA, Member-Sales

Serge V. Borichevsky, P.E., Pittsburgh, Senior-DOT

Gary L. Dickinson, Apollo, Senior-Contractor

James M. Twomey, Bethel Park, Associate DOT

Emily M. Baker, Pittsburgh, Associate-DOT

Patricia Hanna, Pittsburgh, Associate-DOT

### FRANKLIN SECTION

Lewis N. Curley, P.E., Meadville, Senior-DOT

Leo F. Mansfield, Oil City, Member-DOT

Joseph A. Chriest, Sagertown, Associate-DOT

Donald Pisegna, Merier, Associate-Municipal

Francis J. Colella, R.S., New Castle, Senior Contractor

Scott H. Allen, Conneaut Lake, Member-DOT

Lloyd D. Harkleroad, Rural Valley, Member-Contractor

Claude K. Rady, Aliquippa, Member-Contractor

William L. Lyons, Volant, Member-Contractor

Daniel S. Matko, New Brighton, Member-Contractor

Anthony J. Madure, New Castle, Member-Contractor

## DELAWARE VALLEY SECTION

Philip E. Hawley III, P.E., Havartown, Senior-Consultant

John D. Kahil, P.E., Philadelphia, Senior-Consultant

Robert E. Loomis, P.E., Pottstown, Senior-Consultant

John E. Coldren, Coatesville, Associate-DOT

Howard R. Lang, Cherry Hill, NJ Senior-Equipment

Alan D. Wertz, Norristown, Senior-other

James C. Wiggans, Secane, Member-Consultant

### ALTOONA SECTION

Glenn W. Keiper, P.E. Duncanville, Senior DOT

Basil E. Kost, Tyrone, Senior-DOT

David R. Trexler, Altoona, Senior-DOT

Steven E. Miller, Hollidaysburg, Member-Consultant

Gary L. Wisor, Altoona, Member-Consultant †

## ALLENTOWN INSTALLS ROADWAY DE-ICER IN PAVEMENT

The City of Allentown, after many years of studying de-icers installed in the top surface of roadway in Europe over the last ten years, has decided to try this method on two blocks of a heavily traveled street with a grade of eight percent. The City, along with Eastern Industries who mixed the material, felt it was of sufficient interest that, with the cooperation of Central Pennsylvania Chapter of A.P. W.A., invitations were sent out to witness the installation and about seventy-five engineers and local Public Works people witnessed this on September 24, 1982.

The chemical mixed with the top one and one-half inches of blacktop is called VERGLIMIT, which is manufactured in Cologne, Germany, and distributed through PK Innovations of Hamilton, Ontario, Canada. Basically, the ingredients are calcium chloride, caustic soda and linseed oil, with five and one-half percent mixture in the standard top ID-2 mix. The installation was observed by an en-

continued on next page



## EAST PENN SECTION

Bart Snyder, Public Relations

Twenty-six members attended the first Fall regular dinner meeting of the Section held on September 14, 1982 at Trainer's Restaurant in Lehigh. Mr. Matthew J. McTish, program chairman for the evening, introduced Mrs. Sandra E. Scheffy, Account Executive, of Merrill, Lynch, Pierce, Fenner, and Smith, Inc., who gave a very interesting talk and discussion on Cash Management, IRA's, Keogh's, etc. All it takes is some investment cash to make a few bucks, and Sandra told us how to do it.

Twenty-five members and guests attended the regular dinner meeting of the Section held on October 12, 1982, at Walp's Restaurant in Allentown. Mr. James Montgomery, program chairman for the evening, introduced Mr. David R. Zangrilli, Area Market Manager for S. J. Groves and Sons Co., who presented a very informative motion picture and talk on the so-called "Thirteen Mile (conveyor belt) Solution". The project entailed providing some 25 million tons of fill for grading and drainage as part of an Interstate 80 project on the west side of Salt Lake City, Utah. This was the challenge faced by S. J. Groves and Sons Co. when the project was let in 1978. The fill material site selected was on Antelope Island located in the Great Salt Lake, 13 miles distant from the project to be constructed. A continuous belt loader conveyor system was designed and set up from the borrow pits to the project which moved in excess of 50,000 tons per day. Cost analysis showed that the most economical method of transporting the fill material would be the use of the 13-mile conveyor and a minimal fleet of massive 260-ton tandem bottom dump mine wagons. It was estimated that \$3,000,000 was saved by employing the conveyor system. †

## EAST PENN SECTION

Matthew McTish, program chairman for the evening, shown with Mrs. Sandra Scheffy, Account Executive of Merrill, Lynch, Pierce, Fenner, and Smith, Inc., after her program presentation at the regular dinner meeting of the East Penn Section on September 14, 1982.

James Montgomery, right, program chairman for the evening, presenting a token of appreciation to Mr. David R. Zangrilli, Area Market Manager for S. J. Groves and Sons Company, after his program presentation at the regular dinner meeting of the East Penn Section on October 12, 1982.



## Allentown

cont from page four

gineer from the distributing company and has been determined to be satisfactory.

This material has given service for 7 years in some European installations and there is hope for at least three more. The process by which the snow is melted is as follows: The calcium chloride was coated with asphalt on the roadway, as the calcium and the asphalt is worn off by traffic, it exposes the calcium chloride to the elements, and a de-icing takes place. Down to 20 degrees Fahrenheit a bare pavement exists and from 20 degrees to 0 degrees Fahrenheit slush will form but not bind to the pavement. During the summertime as the asphalt wears off the calcium chlor-

ide, the summer heat reseals asphalt on the calcium chloride and prevents rain from washing away the calcium in warm weather.

The cost of the material because it is manufactured abroad is high, but should be reduced once a manufacturer is licensed in this country. The installation in Allentown cost about three times what a normal pavement would cost. This material is ideal for bridges and areas that need instant salting during changes in temperature. It is not intended to be used as a total de-icer over long stretches of road.

We will be observing the reaction of the chemical on this roadway for the next few winters as there is not much local data because this installation is one of the few in this country and the first in Pennsylvania. †

## OFFICERS 1982-83

J. Dixon Early, P.E. . . . President  
 Warren A. Miller . . . 1st Vice President  
 Charles E. Luff . . . 2nd Vice President  
 Robert E. Yeager, R.S. . . . Treasurer  
 Terrence D. Conner, P.E. . . . Secretary  
 Charles J. Sincavage, P.E.

Immediate Past President

## DIRECTORS

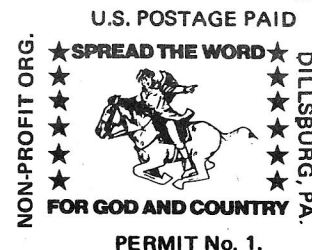
3 Years William Allen, P.E.  
 Albert Bedard, P.E.  
 Daniel K. Bittler, P.E.  
 Frank Lopez, Jr.

2 Years Duane Berry, P.E.  
 David B. Jones, P.E.  
 Ronald E. Springman, P.E.  
 G. Michael Tiani

1 Year Arthur K. Banks, P.E.  
 David E. Baker  
 Michael J. Suich

Address Corection Requested

Robert M. Sherr  
 205 Banner Street  
 EMMAUS PA. 18049



## SECRETARY'S CORNER

The national nominating committee will meet prior to the January 1983 board meeting; therefore sections should send their nominations to Charles J. Sincavage, 312 Florida Ave., Shenandoah, PA 17976 prior to Jan. 1, 1983.

Numerous sections have not paid for the Past Presidents Pins distributed April 1982. Payment is overdue.

Several sections have not paid their 1982-83 National assessment. Payment is overdue.

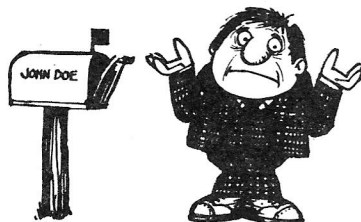
Since 1983 is the 25th anniversary of our society I will be distributing anniversary seals to your National Director at the October 22, 1982 board meeting. Check with your director to obtain your seals.

## CHANGE OF ADDRESS?

Please Note . . .

Postage is one of our most expensive items. It costs 25¢ for each letter we get back with the wrong address. Please help us by sending us your change of address when you move.

Thank you.



every effort to meet the schedules as indicated.

## MEMBERSHIP

Altoona	129
Charleston	149
Clearfield	58
Cuyahoga Valley	99
Delaware Valley	250
East Penn	122
Franklin	268
Harrisburg	264
N. Central W. Virginia	43
North East Penn	87
Ohio Valley	21
Pittsburgh	218
South West Penn	108
Western Reserve	56
Williasmport	134
<b>Total</b>	<b>2006</b>
Professional	35.5%
Departments of Transportation	35.1%
Consultant	17.9%
Contractor	20.7%
Other	26.3%

## EDITOR'S COMMENTS

At the National Board of Directors meeting held at the Sheraton Inn, Milesburg, PA., presided over by President J. Dixon Early, P.E., on June 25, 1982, it was determined that the Scanner was to be issued in November 1982, February 1983 and April 1983. In order to meet the schedule I must receive the information no later than October 15, 1982, January 15, 1983 and March 15, 1983 as indicated in the National minutes. Your Section Secretary can and will inform you of the duties of the Public Relations Chairman.

I am still receiving colored pictures for the Scanner which is a no-no since any red colors show up as a black blotch. Do not send me colored prints. Please make

## YULE, JORDAN ASSOCIATES ANNOUNCES PARTNERSHIP

Yule, Jordan Associates is pleased to announce the admittance into the Partnership of James E. Garling and John C. Galbraith, both members of the Harrisburg Section. In addition, Raymond E. Good has been admitted into the Partnership and Dale C. Beaver and William T. Guy have been named Associates.

Also announced is the retirement from the Partnership of Kenneth E. Waters.

## 1983 CONVENTION UPDATE

The Altoona Section is sponsoring the 1983 National Convention. It will be held at the Bedford Springs Resort Hotel, near Bedford, Pennsylvania.

Since the society will celebrate its 25th Anniversary at the 1983 Convention, the Altoona Section plans to make this a special convention.

Watch the February issue of the "Scanner" for more information, plus details of how to get your convention accomodations free.

Donald J. Snavelly, P.E., Public Relations  
 Altoona Section

