



MARCH 1982. A.D.

continued on page two

President's Message

continued from page one

West Virginia.

Our success was largely attributed to your active support, also to the hard work of the National Board of Directors, each accepted assignments, faithfully attended board meetings and debated the issues. Fellows, you can be proud. Thank you, it was great working with you. Each of you, please continue your input and support of the incoming national officers and board members. To this end I solemnly pledge.

Now that my term of office comes to an end, please accept my sincere appreciation and gratitude for all your courtesy and the opportunity of serving as your National President. Thank you, it was my honored pleasure. †

Retires

continued from page one

His career began in Alaska, working for the former U.S. Bureau of Public Roads (now the Federal Highway Administration) on the Anchorage to Fairbanks Highway.

Parrs joined PennDOT at the Philadelphia office in St. David's. He worked in various positions before being promoted field liaison engineer, which covered reviewing plans for Eastern Pennsylvania.

The post eventually led Parrs to Northeastern Pennsylvania and a promotion to assistant district engineer covering planning, design and environmental considerations.

Parrs worked closely in developing plans for the Cross Valley Expressway in Luzerne County and was involved in the planning that had been done on the Industrial Highway from Scranton to Carbon-dale, the Tocks Island Recreation Area and the proposals made to relocate Route 209.

He also was active in coordinating the Beautification Program opposite Memorial Stadium to reclaim much of the wasteland visible from the North Scranton Expressway.

Parrs and his wife, Jean, reside in Dallas, with their three children.

He was honored by his coworkers and friends at a retirement party at Runco's Lounge, Dunmore. †

NEW MEMBERS

ALTOONA SECTION

Forest E. Cameron, Roaring Spring, Pa. - Senior-Contractor

Roy E. Davis, Hollidaysburg, Pa. - Senior-

Municipal

Michael L. Riffle, Duncansville, Pa. - Senior-Contractor

Terry L. Smith, Altoona, Pa. - Senior-DOT
Philip J. Ranpulla, Duncansville, Pa. - Member - DOT

Charles J. Drosjack, Johnstown, Pa. - Member-Consultant

Mark K. Pardue, Hollidaysburg, Pa.-Member-DOT

HARRISBURG SECTION

Charles E. Wolf Jr., Dillsburg, Pa.-Senior-Contractor

Howard Yerusalim, P.E., Harrisburg, Pa. Senior-DOT

Robert M. Peda, Harrisburg, Pa.-Member-DOT

Robert L. Shade, Carlisle, Pa.-Member-Products

John W. Vokes, Camp Hill, Pa.-Senior-Consultant

Thomas A. Paul, Dillsburg, Pa. - Senior-Consultant

EAST PENN SECTION

John J. Senick, Bethlehem, Pa. - Senior-Contractor

Gregory D. Brennan, Pottsville, Pa. - Associate - Consultant

FRANKLIN SECTION

Lee N. Stern, Westfield, NJ - Senior-Pro - ducer

HARRISBURG SECTION

Brian A. McCoola, Public Relations

The Harrisburg Section ushered in 1982 with an interesting and informative program outside the field of engineering.

Tax Law changes affecting personal retirement income were addressed by Ronald K. Fruth of York Federal Savings, Samuel S. Conte of Prudential Insurance, and Frank McGee of Merrill Lynch, at a January 4th Section dinner meeting.

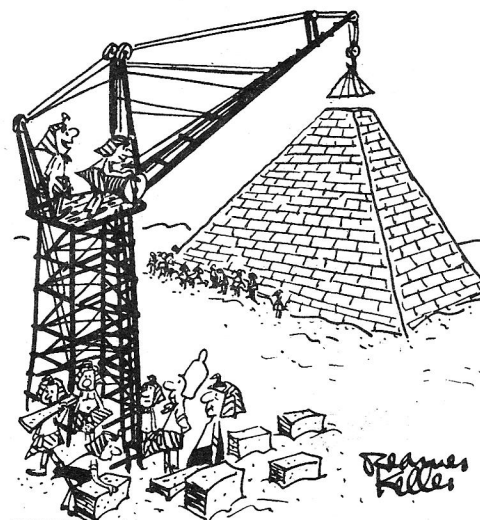
The session provided helpful fiscal information and tax discussion.

The timely program was well received by the section membership, including all those "footballed out" from the holidays.

February's program, held the 2nd Monday of the month, featured a superb structural talk by John M. Kulicki, Ph.D., P.E.

Kulicki, a partner in the firm of Modjeski & Masters, discussed details of the final design of the concrete cable-stayed alternate to the Weirton-Steubenville Bridge across the Ohio River.

The talk, expertly illustrated by a series of fine graphics, traced design development of the bridge which if built will be the largest of its type in the United States.



"NOW TO BURY THE CRANE AND WE'LL HAVE PEOPLE WONDERING FOR AGES!"

Future programs are to include an areawide "Engineers Week" dinner February 25th, and our Section's traditional "Ladies Nite" dinner/dance, March 6th. †

EAST PENN SECTION

Bart Snyder, Public Relations

Forty-four members and guests attended the regular dinner meeting of the Section held on January 12, 1982, at Trainer's Restaurant in Lehigh. Mr. Jack Wachter, program chairman for the evening, introduced Mr. Sherman Hayes, of Explo-Tech, Inc., and Mr. Phillip Sullivan, of the DuPont Company, who jointly presented a very interesting program on the use of construction fabrics and their specific application in bituminous paving.

There have been some notable changes in the District 5 Office of the Pennsylvania Department of Transportation in the past few months. Mr. Robert Donovan, Assistant District Engineer-Design, switched jobs with Mr. William Boykas, Assistant District Engineer-Construction.

Mr. Michael Quigley has been appointed Acting Northampton County Maintenance Manager, and Mr. Phillip Brush has been appointed his Assistant Manager.

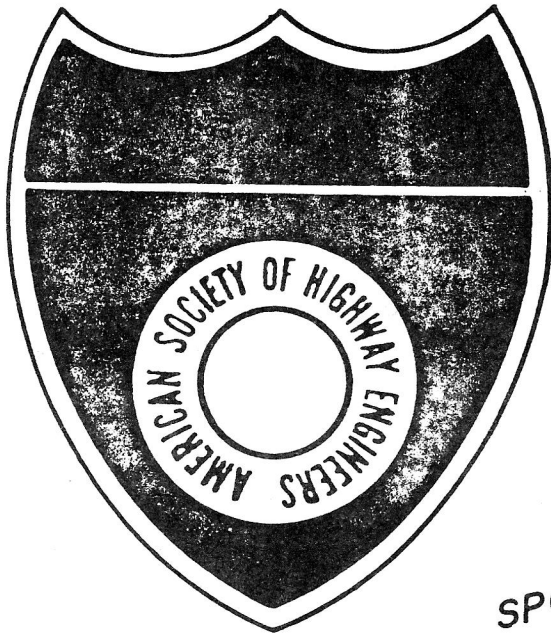
Mr. Larry Geiger has been appointed Acting Lehigh County Maintenance Manager, and Mr. David Cox has been appointed his Assistant Manager.

Twenty-seven members and guests braved a snowy, icy night to attend the regular dinner meeting of the Section held on February 9, 1982, at the Village Inn, in Allentown. Mr. Fred Wolf, pro-

continued on page four

PROGRAM SPEAKERS

DOWNTOWN
SHOPPING



AMERICAN SOCIETY
OF HIGHWAY ENGINEERS
WILLIAMSPORT SECTION

SPONSORS THE

GOLF & TENNIS

NIGHTLY ENTERTAINMENT

TWENTIETH ANNUAL
NATIONAL CONVENTION

MAY 13-16, 1982
GENETTI LYCOMING HOTEL
WILLIAMSPORT, PA.

FLOWER SHOW

BUS TOUR



East Penn Section

continued from page two

gram chairman for the evening, introduced the following four gentlemen, representing Racor Industries, Inc., who all participated in the program:

Mr. Steve F. Glass, Sales Manager, from Modesto, California

Mr. Chuck Cook, Engineer from Mechanicsville, New Jersey

Mr. Ted Soblotsky, Engineer, from Harrisburg, PA

Mr. Ed Tazzis, with L.B. Smith, Allentown, PA

The subjects of their talks and discussions were the Racor Filter Separator Systems for Diesel Engines and the Racor Recycle Blender Systems for the efficient operation of any Diesel Engine. An interesting aspect of their presentation was a visual demonstration unit showing just how the system worked.

After thirty years of service with the Pennsylvania Department of Highways and the Pennsylvania Department of Transportation, Ralph M. Creveling, an active member of the East Penn Section, has retired on February 10, 1982. One hundred and seventeen fellow employees, family, and friends attended a testimonial luncheon in his honor at the Brass Rail Restaurant in Allentown on February 12.

All of Ralph's tenure of employment was confined to the Department offices in Allentown. He spent some time in the District Bridge, Traffic, and Roadside Development Units, and worked his way from the position of Assistant Supervisor, the title he held upon his retirement.

We all wish Ralph the best of everything in his retirement. †



EAST PENN SECTION

Jack Wachter, right, program chairman for the evening, presenting a token of appreciation to Mr. Sherman Hayes, left, of Explo-Tech Inc., and Mr. Phillip Sullivan, center, of DuPont Company, after their program presentation at the regular dinner meeting of the East Penn Section on January 12, 1982.

Fred Wolf, left program chairman for the evening, presenting a token of appreciation to Mr. Steve F. Glass, Sales Manager of Racor Industries, Inc., Modesto, California, after his program presentation at the regular dinner meeting of the East Penn Section on February 9, 1982.

East Penn Section member Ralph M. Creveling and his wife Jean. After 30 years of service, Ralph retired from PennDOT on February 10, 1982.



PITTSBURGH SECTION

Henry J. Kuczynski, Public Relations

The kick-off meeting for the 1981-82 season was held on September 9, 1981 at the Parkway Terrace Restaurant in Green Tree, PA.

A total of 35 members attended this meeting which featured a slide presentation on China's highways and transportation by Dr. Alfred C. Ackenheil of Geotechnical System, Inc. Dr. Ackenheil took advantage of the opportunity to include a photographing tour of China during his recent business trip to this fascinating and interesting country. His color slides were an excellent portrayal of the contrasting differences of modern versus ancient modes of transportation and highway systems in China today.

The members and officers of the Pittsburgh Section express their gratitude to Dr. Ackenheil for his interesting presentation and ask him to hurry up and make another trip to China so that we can share more of his colorful slides.

The October meeting is set aside each year to honor our past presidents by holding a Past Presidents Dinner. It also serves as an opportunity for wives and lady friends of members to socialize at some of the finer establishments in the Pittsburgh area.

This year's event was held at the Chartiers Country Club on Friday, October 23, 1981. One hundred twelve persons attended this annual affair which included an excellent dinner of fine cuisine from the kitchen of Chartiers Country Club. Cocktails were served before and after the dinner and the evening was spent dancing to the music of Jack Pur-

continued next page



PITTSBURGH SECTION

November Meeting Pittsburgh Section, Joint Meeting with Women in Construction (WIC) and Association for Bridge Construction and Design (ABCD) Left to right: Bernie Jenkins, Pres. (WIC), Joyce Wintgens, V.Pres. (WIC), Al Kozel, Jr., Pres. (ASHE), Carl Angeloff, Pres. (ABCD), Dr. Thomas Larson, Secretary of Dept. of Transportation.

November 1981 Joint Meeting of Pittsburgh Section ASHE, WIC and ABCD, at Pittsburgh Press Club. Honorable Secretary Dr. Thomas Larson admiring gift of ASHE paperweight from Al Kozel Jr., President.

November 1981 Joint Meeting of ASHE, WIC and ABCD at Pittsburgh Press Club. Bernie Jenkins, WIC President, left, and her smiling troupe: Joyce Wintgens, V. Pres., Sue Ingold, Treasurer and Kathy Sheets, Equipment operator.





cell. An interesting feature of the evening was the violin virtuoso and piano accompanist who serenaded the guests during cocktails and dinner.

The Pittsburgh Section was honored by the presence of National President Charles Sincavage and his lovely wife. Both enjoyed the affair enormously as well as all who attended.

This affair was a bargain to all participants as the Pittsburgh Section subsidized some of the special activities.

This writer, in behalf of the members, extends special accolades to President Al Kozel, Past Presidents Joe Bianco and Mike Tiani and Secretary Charolette Stetter for their fine efforts in planning this affair.

The November meeting was a joint meeting with Women in Construction (WIC) and the Association for Bridge Construction and Design (ABCD). It was held at the Pittsburgh Press Club in Downtown Pittsburgh on Tuesday, November 17, 1981.

The three organizations were represented by a "sell out" group that was privileged to hear a talk by guest speaker Dr. Thomas Larson, Secretary of the Pennsylvania Department of Transportation. Several representatives from the Pittsburgh news media were also present at this meeting.

Dr. Larson lauded "Women in Construction" for their unique organization and their individual contribution to the construction industry. He alluded to the fact that women no longer take a "back

continued on next page



PITTSBURGH SECTION

Pittsburgh Section Past President's Dinner - Al Kozel Jr. presenting Past President Plaque to Joseph Bianco (rt.) at the Chartiers Country Club in October 1981.

Pittsburgh Section Past Presidents Dinner, Chartiers Country Club, October 1981: Front row lt. to rt: Joseph Bianco 1980-81; Michael Tiani 1979-80; Charles Sincavage, Nat'l Pres.; Howard Schubel Jr. 1972-73; Rudolph Melani 1973-74. Back row lt. to rt: Charles Way, 1977-78; Al Kozel Jr. 1981-82; William Becker 1978-79; Raymond Gedrock 1976-77; John DeRoss 1968-69.

Pittsburgh Section Past Presidents Dinner, Chartiers Country Club, October 1981, "Cocktail Time", lt. to rt. Mr. and Mrs. Bruce A. A. Hultman, William Kozy.

seat" to the male chauvanist construction worker. They now put on hard hats, workmen's clothes and boots and roll up their sleeves to work side by side with the men of the industry.

Secretary Larson's talk dwelt on the past, present and future economical ramification of the highway and bridge system in Pennsylvania. PennDOT's current accelerated highway rehabilitation program is the product of the recently enacted tax revenue bill. These funds combined with matching Federal funds will enable the Department to move ahead with an even more comprehensive highway and bridge reconstruction program in the Western Pennsylvania area in 1982. Included will be a start on the controversial and long delayed East Street Valley Expressway and continuation of improvement of the Penn-Lincoln Parkway into Downtown Pittsburgh.

The Secretary's optimism, however, was underlined with a cautious note, that the present economic conditions and high inflation could have a recessionary effect on highway programs.

A.S.H.E. President Al Kozel, Jr., WIC President Bernie Jenkins and A.B.C.D. President Carl Angeloff shared honored seating at the head table with Dr. Larson. At the conclusion each presented the Honorable Secretary with a Certificate of Appreciation and a personal token from their respective organization. †



PITTSBURGH SECTION

Pittsburgh Section Past Presidents Dinner
Chartiers Country Club, October 1981, "The Fiddler and I", Lucy Tartaglia, Guest of John DeRoss.

Pittsburgh Section Past Presidents Dinner
Chartiers Country Club, October 1981, "A Smile of Contentment" by Art Peternel.

Pittsburgh Section Past Presidents Dinner,
Chartiers Country Club, October 1981. Seated
lt. to rt: Mrs. Charles Sincavage, Mrs. William
Peternel. Standing lt. to rt: Charles Sincavage,
Nat'l. Pres.; William Peternel, Jim Weaver, Past
Nat'l. Pres.





PITTSBURGH SECTION

September 1981 meeting, Pittsburgh Section Officers 1981-82. Left to right: Charlotte Stetter, Secretary; Richard Wauch, 1st Vice President; Al Kozel Jr., President; David Rose, 2nd Vice President; Michael Gittens, Treasurer.

September 1981 meeting, Pittsburgh Section - President Al Kozel Jr. proudly displaying the ASHE National Convention Plaque for most members attending convention as won by the Pittsburgh Section for four consecutive years.

September meeting 1981 Pittsburgh Section - Ray Wiehagen - Program chairman looking on as guest speaker Dr. Alfred C. Ackenheil admires certificate of appreciation and ASHE paperweight presented to him.



GASWAGON REDUCES CYLINDER HANDLING, INSTALLATION COSTS

A new mobile, self-contained system for on-site distribution of industrial gases, designed to significantly reduce cylinder control problems and cylinder handling costs for users requiring 20,000 to 80,000 standard cubic feet (SCF) per month, is now available from Area Companies Inc., Hammond, Ind.

Called the GasWagon, the system provides the equivalent amount of gas of 72 high-pressure cylinders, and eliminates the need for large cylinder racks and the problem of transporting cylinders around the jobsite. It also has multiple-operator capabilities, thus reducing the need for frequent cylinder changes. Because the GasWagon can be easily wheeled around the jobsite, and because the self-contained skid system can be transported directly to the work area, there is no need for extensive piping installations.

The GasWagon provides approximately 18,000 SCF of oxygen, nitrogen or argon (6,000 SCF to 9,000 SCF of acetylene or alternate fuel gases). In addition, the GasWagon has a custom 2,000-SCF-per-hour vaporizer at 175 psig for oxygen and inert gases.

The GasWagon includes a vaporizer and an all-stainless-steel manifold system, a roadability package with surge brakes, fenders and lights, and a forklift access that allows the skid to be removed from the trailer.



PITTSBURGH SECTION

September 1981 meeting Pittsburgh Section Officers and Board of Directors 1981-82. Left to right: Charles Rmarchyk, Director; Raymond Wiehagen, Director; John DeRoss, P.N.P., Director; Richard Wauch, 1st Vice Pres.; Al Kozel Jr., President; Charlotte Stetter, Sec.; David Rose, 2nd Vice Pres.; Arthur Peternel, Director; Michael Gittens, Treasurer.

J. DeRoss, Past National Pres., Board Member; Cliff Chan, new member, Civil Engr. Trainee and Dr. Alfred C. Ackenheil, guest speaker and ASHE member at September 1981 meeting.

EVALUATION OF TEST METHODS AND USE CRITERIA FOR GEOTECHNICAL FABRICS IN HIGHWAY APPLICATIONS

by FHWA Structures and Applied Mechanics Division

In recent years, geotechnical fabrics have been used widely in a variety of highway construction applications. Four categories of highway construction use of geotechnical fabrics are drainage, soil layer separation, soil reinforcement, and erosion control. This report will assist the engineer in choosing the most suitable and cost-effective fabric for a particular application. The more common polymers used in the manufacture of fabric filaments and their general characteristics are described. Also covered are the general relationships of the properties of a fabric to fabric construction method, the nature of the filament, and the weight of the material per unit area. In most instances fabric construction is more significant than polymer type.

Many kinds of fabric are already on the market and new kinds are being introduced. Currently, the two polymers used in the manufacture of most geotechnical fabrics in the United States are polypropylene and polyester. Various polymers are significantly different, and the fibers produced by different processes from the same polymer may also differ. The more important polymer characteristics influencing the properties of the fabric are specific gravity, strength, strain at failure, modulus of elasticity, creep, reaction to cyclic loading, and the fabric stability or durability relative to temperature, water immersion, ultraviolet light, chemical activity, and biological attack.

The report presents test criteria for highway applications of fabrics and evaluates existing test methods for determining fabric properties. Findings in the report were derived from references on previous research and from field visits to se-



lected State highway and transportation agencies to collect information on fabric usage. Limited analytical studies were conducted to facilitate the understanding of soil-fabric interaction and the development of design criteria. †

NEW STRUCTURAL SYSTEMS FOR ZERO-MAINTENANCE PAVEMENTS. ANALYTICAL AND EXPERIMENTAL STUDIES OF AN ANCHORED PAVEMENT: A CANDIDATE ZERO-MAINTENANCE PAVEMENT

by FHWA Structures and Applied Mechanics Division

This report compares the behavior of a new anchored pavement concept with

that of a conventional rigid pavement system in both continuous and jointed configurations. In cross section, the anchored pavement resembles a concrete double T-beam with the flange acting as the pavement surface. The 1.2 m (4 ft.) deep by 0.3 m (1 ft.) wide concrete webs are embedded in the subgrade soil to provide anchorage. The anchored pavement is deemed a promising zero-maintenance concept because it poses few construction difficulties, requires little subgrade preparation, and uses quantities of structural materials comparable to those in conventional rigid pavement systems.

The study methodology included the following: Finite element analyses of environmental stresses and of vehicle

continued on page 10

NORTH EAST PENN SECTION

George J. Parrs, P.E., Public Relations

President Joe Notartomas and Vice President Al Brocavage have put together a schedule of interesting programs for the new year. In October the guest speaker was Mr. John Aitkins, Manager of International Salt Co. Sales & Service Division. Mr. Aitkin's program covered a brief history of salt and its recovery from the earth. This valuable resource has found its way into our lives in a most imaginative way. We know it best in helping us to keep highways clear of ice and snow.

At our November meeting, we had the pleasure of renewing our acquaintances with Bob Heatherington, the Executive Director of PHIA. Bob gave us a briefing on PHIA's mission and their effort to stay on top of the industry's financial problem.

A Valentine Ladies Nite was scheduled for February 13, 1982 featuring a gourmet meal accompanied with fine beverages and beautiful music.

Jack Thompson who is UGI Transmission and Distribution Engineer, will present a program of UGI's services. Jack is one of our new members from the Utilities area. Hope to see a big turnout for these meetings.

The January meeting held at Danilo's Restaurant was a real success. Jack Thompson, Chief Engineer from UGI, gave the audience an overview of the Utility Company's program to keep Luzerne and adjoining counties warm and bright in the years to come. UGI is a diversified energy company with major interests in utilities, compressed gases, and oil and gas. The company is headquartered in Valley Forge,

PA. Jack Thompson is a Senior Member of the N.E. Penn Section.

Three new members of ASHE were awarded their certificate and lapel pins by President Joe Notartomas at the January meeting. The happy recipients were Kevin Belles and Anthony Maglioli of B.G. Coon, Inc., contractors, and Rawlin Keisling of PennDOT.

On January 8, 1982, a testimonial was held honoring George J. Parrs upon his retirement from PennDOT. A dinner/dance was held at Runco's Restaurant, Dunmore, PA. Tom Harrington, former D.E. of District 4, presided as MC. As can be expected, the Members of the N.E. Penn Section (sometimes known as the Altoona Section in disguise) made this a party George would not forget. It was a b-l-a-s-t!



NORTH EAST PENN SECTION

Left to right: Kevin Belles, Rawlin Keisling, Anthony Maglioli, Joe Notartomas.

Jack Thompson, UGI, is presented certificate of appreciation by Joe Notartomas, President, North East Penn Section.



Structure

continued from page 9

wheel loading stresses that were subsequently superimposed; load tests on aluminum 1:20 scale models of an anchored pavement and of a conventional rigid pavement slab of equal length each supported on an identical subgrade of known properties; and comparison of analytical and experimental results with field data collected from various road tests and reported in the literature. A two-dimensional finite element mesh was selected for the environmental stress analysis and a three-dimensional finite element mesh for the wheel load stress analysis. Both were used in conjunction with the computer program Engineering Analysis System (ANSYS).

The anchored pavement concept offers two advantages over a conventional rigid pavement system. First, deflections of the anchored pavement are generally lower by as much as one order of magnitude and are more uniformly distributed; curling deflections are nearly eliminated by the stiffened edges of the anchored pavement. Second, loads applied to the anchored pavement are distributed more uniformly and at greater depth to the subgrade soil, making subgrade failure less

continued on page 11

DELAWARE VALLEY SECTION

A. J. MacLennan, P.E., Public Relations

On January 20, 1982, the Delaware Valley Section of ASHE held their first meeting of the new year at the king of Prussia Holiday Inn.

We were privileged to have as our guest speaker, Mr. Michael Lenet, founder of the "Shadow Traffic Network".

Unlike many of the traffic patrols who scan the highways and local roads by means of helicopters and other aircraft, the "Shadow Traffic Network" relies predominantly on a network of interested and concerned citizens band radio operators. Mr. Lenet's operation follows a somewhat unique pattern in as much as most of their information is gathered from interested volunteers who call in on their C.B.'s to report traffic problems, accidents or situations that create delays to the motoring public. This data is disseminated and condensed in report form and provided to participating radio and television stations as a service.

In addition to identifying the problem areas Shadow Traffic will also provide information on alternate routes, potential delay time expected and cause of disruption to traffic.

Interested and participating C.B. operators call in their reports to a central base station operated by Shadow Traffic Network. They in turn assemble all the pertinent data, tape a comprehensive report and distribute this information to the radio and T.V. stations with whom they have contracts. The participating broadcast stations have the option of using their own announcers to relay the data over the airwaves to the public.

According to Mr. Lenet the information on traffic situations is monitored on a constant basis from morning to night and the reports are given over the radio stations at 15 minute intervals.

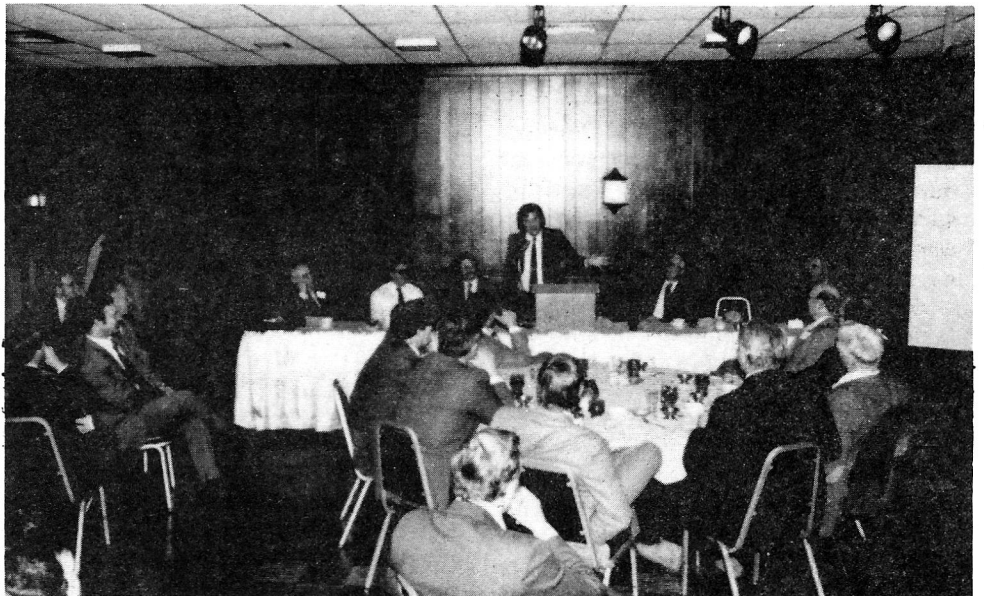
Shadow Traffic works closely with PennDOT and Philadelphia Streets Department officials to determine proposed areas of construction or maintenance projects and anticipated schedules or completion. †



DELAWARE VALLEY SECTION

Mr. Michael Lenet, founder of Shadow Traffic Network, guest speaker.

January 20, 1982 Delaware Valley Section ASHE meeting.



Structure

continued from page 10
likely to occur.

Stresses induced in the anchored pavement from the anchorage reaction restraints may require reinforcing steel. Also, the anchored pavement concept poses possible problems in joint design and construction. Theoretically, separation of the flange and webs may be necessary at joints to permit differential movement. A proposed joint design is presented for an anchored pavement with a sleeper slab beneath the joint that may overcome the problem.

In the first of two supplemental reports, Analysis of Anchored Pavements Using ANSYS, a program manual is provided for evaluating the response of an anchored pavement to vehicle static loads, moisture

variation in the subgrade, and temperature variation through the pavement. †



Our forefathers managed to survive without sugar until the 13th century. They did without coal until the 14th century and buttered bread didn't come on the scene until the 15th century. Potatoes didn't come along until the 16th century, while coffee, soup, and tea were not introduced until the 17th century. Matches, electricity, and gas weren't used until the 19th century and canned goods didn't come along until this century. Do we really have anything to grumble and complain about?

OFFICERS 1980-1981

Charles J. Sincavage, P.E. President
J. Dixon Early, P.E. ... 1st Vice President
Warren A. Miller 2nd Vice President
Robert E. Yeager, R.S. Treasurer
Terence D. Conner, P.E. Secretary
Gene G. Smith P.E./R.S.

Immediate Past President

DIRECTORS

3 Years Duane Berry, P.E.
David B. Jones, P.E.
Ronald E. Springman, P.E.
G. Michael Tiani

2 Years Arthur K. Banks, P.E.
David E. Baker
Michael J. Suich

1 Year Charles E. Luff
Albert J. Bedard Jr., P.E.
Clarence F. Hood, P.E.
William H. Allen, P.E.
Daniel K. Bittler, P.E.
Daniel V. Naranch
Frank S. Lopez Jr.

Address Corection Requested

Robert Sherr
Box 14 B-1 Star Route
Jim Thorpe, Pa. 18229



SECRETARY'S CORNER

At the January 22 Board of Directors meeting we had only one nomination for our "Man of the Year" award. Hopefully additional nominations have been forwarded to Gene Smith by the time this issue of the Scanner is published.

Each section should have conducted their Nominating Committee meeting and notified their membership of the proposed nominations. By-laws require that this be completed 120 days prior to the annual meeting.

Again, I must ask Section Secretaries to check new member applications for legibility, especially the name and address.

All members who are advanced in grade of membership must be approved by the National Secretary. This is especially important for those who advance to Life Membership status so that they receive their Life Membership Plate.

Respectfully,
Terence D. Conner

EDITORS COMMENTS

A note to the Section Public Relations Chairman: I call your attention to the January Issue of the Scanner and the Wild Life Museum article by a member of the East Penn Section.

Certainly some members in your section have hobbies, and their experiences would be excellent material for our readers. Articles about members who are active in the Section's programs are always welcome.

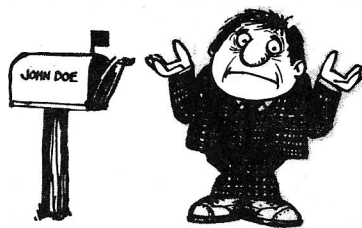
Since the March issue will be the last

CHANGE OF ADDRESS?

Please Note . . .

Postage is one of our most expensive items. It costs 25¢ for each letter we get back with the wrong address. Please help us by sending us your change of address when you move.

Thank you.



issue of the 1981-82 fiscal year, I hope more Section Public Relations Chairmen become involved in furnishing information to me for publication.

This has been a long, cold winter, and I feel sure we will be happy to see it come to an end. One consolation is that each day which passes brings us closer to Spring.

Plan to attend the 20th Annual Convention to be held at the Lycoming Hotel in Williamsport, Pa., May 13-16, 1982, hosted by the Williamsport Section. See you there. †

Consider the hammer. A good one doesn't lose its head or fly off the handle. It finds the point and drives it home. It keeps pounding away until the job is done. It is the only knocker in the world that does constructive work.

MEMBERSHIP

Altoona	129
Charleston	144
Clearfield	62
Cuyahoga Valley	94
Delaware Valley	214
East Penn	120
Franklin	253
Harrisburg	251
N. Central W.V.	42
North East Penn	89
Ohio Valley	21
Pittsburgh	209
South West Penn	103
Western Reserve	56
Williamsport	130
Total members	1917

Professional Status - 35%

Hgwy. or Trans. Depts. -	35.0%
Consultant	17.2
Contractor	21.0
Other	26.8



COMPLIMENTS OF
AMERICAN SOCIETY
OF
HIGHWAY ENGINEERS
Clearfield Section