



# ***The A.S.H.E.***

☆☆☆☆☆☆☆☆☆☆☆☆☆☆☆☆☆☆☆☆

# ***SCANNER***

VOLUME XVIII, No. 1

THE AMERICAN SOCIETY OF HIGHWAY ENGINEERS

SEPTEMBER 1981



## **PRESIDENT'S MESSAGE**

**CHARLES J.  
SINCAUGE**

I am honored and accept with pride and humiliation your confidence in electing me president of the American Society of Highway Engineers. I will do my best to maintain the standards set by the men who served before me in this important office. I hope to perform and serve during my term to the satisfaction of the entire membership.

I will continue the new sections and nationwide advertising programs initiated by past presidents Smith and Parrs. Through these efforts we have inquiries for membership from representatives of 23 states. It is my hope that I can attend one home meeting of each section.

You will recall a year ago Gene Smith asked us to sign one for '81. Now I challenge those of us who failed to renew our efforts and sign 2 in '82.

Governor Thornburgh lost his long battle for SWAP, but won the war for fund for PennDOT when he signed into law a 3.5% tax. ASHE supported SWAP and it supports the so-called oil company franchise tax. We do for the same reasons; PennDOT needs the money. Our roads and bridges have been neglected. The new tax is expected to raise \$192 million in fiscal 1981-82, \$215 million in 1982-83, \$236 million in 1983-84 and \$258 million in 1984-85. For the sections efforts in getting ASHE's message of PennDOT's needs to your legislators, the national board and I thank you and offer a tip of

our hat for a job well done.

We must continue to get the highway message to the public and elected officials. I ask the local sections to intensify their efforts. Keep your public relations person informed which will permit him/her to release the message promptly.

If we are to continue to grow and prosper in an industry so important to our way of life we must pledge, Yes I will.

To this end I give you my solemn pledge.

For your use and convenience listed are the 1981-82 committee chairman appointments. Please contact them or any board member with your thoughts and ideas.

### Legislative Review

**William Allen, Chairman**

215-337-1550 Business

215- 5-3934 Home

### Technical

**Al Bedard, Chairman**

717-766-1741 Business

717-774-5699 Home

### Budget

**Bob Yeager, Co-Chairman**

814-695-4488 Business

814-695-3258 Home

**J. Dixon Early, Co-Chairman**

717-787-4774 Business

717-767-1297 Home

### Nominating & Man of the Year

**Gene Smith, Chairman**

412-646-1144 Business

412-346-6945 Home

### By-Laws & Constitution

**Warren Miller, Chairman**

814-472-7700 Business

814-472-7534 Home

### New Sections

**Charles Luff, Co-Chairman**

216-794-0667 Business

216-825-4050 Home

## **CLEARFIELD SECTION**



**THOMAS C. ICKES**

On February 19, 1980, Thomas C. Ickes was appointed as the District Engineer for Pennsylvania Department of Transportation's District 2-0. Tom is a member of ASHE and has worked for the Department for 21 years in various capacities as a Civil Engineer Intern, a Designer in the Bridge Unit, District Bridge Engineer and Assistant District Engineer for Design.

Upon his appointment as District Engineer, Tom commented, "I am well aware that the job of District Engineer is extremely demanding. However, I feel that my twenty years of continuous service with the Department of Transportation will provide me with the necessary practical management tools that are required of a successful District Engineer."

Tom received his B.S. in Civil Engineering from the Pennsylvania State University in June of 1960 and in September of 1969 received his Masters of Engineering also from Pennsylvania State University.

Tom and his wife Rosemary, along with their three children; Jodi, Mark and Christy reside in Clearfield.

## EAST PENN SECTION

Bart Snyder, Public Relations

Ronald Fritz, second from right, president-elect for the fiscal year 1981-82, presenting the past-president's plaque to Mr. Harry Bisco on his left, the immediate past president, at the regular meeting of the East Penn Section on May 12, 1981. Also pictured is Mr. William Diehl, far left, second vice president-elect, and Mr. John Donahue, far right, secretary-elect.



On April 14, 1981, a joint venture meeting of the East Penn Section with the Northeast Penn Section was held at the Sportsman Restaurant in Blakeslee, Monroe County. Mr. William B. Middendorf, Deputy Secretary for Environmental Protection, gave an interesting talk on environmental problems in Eastern Pennsylvania.

On May 12, 1981, the annual business meeting of the East Penn Section was held at Apple Manor Inn, near Schnecksville. This was the last meeting of the season until September, and the main topic of business featured the installation of our new officers. Mr. Ronald Fritz, of the Riebe Construction Company, was installed as the new president, succeeding

Mr. Harry Bisco, operations director of the city of Allentown. The following list of nominees were elected to their respective offices for the 1981-82 fiscal year:  
1st vice president - Robert L. Donovan  
2nd vice president - William L. Diehl  
Secretary - John J. Donahue  
Treasurer - Richard S. Grammes

## DELAWARE VALLEY SECTION

A. J. MacLennan, P.E., Public Relations

The King of Prussia Holiday Inn was the site of the Delaware Valley Section meeting on April 22, 1981.

In addition to a very informational program presented by Mr. James Deal of the Mergentime Company on underpinning work for the Center City Commuter Rail Connection in Philadelphia, our newly elected president, Harold Kepler presented the "Man-of-the-Year" award to William H. Allen.

Bill Allen needs little or no introduction having served the Delaware Valley Section as a Past President and currently serves on the National Board of Directors.

Bill is an alumnus of the University of South Carolina, a registered Professional Engineer and is the Eastern Regional Manager, Transportation Division for Gannett, Fleming, Corrdry and Carpenter, Inc. Of his 39 years in engineering, Bill has spent 36 with G.F.C.&C.

Under his supervision the firm has provided design services on such projects as the Pennsylvania Turnpike, New Jersey Turnpike, Garden State Parkway, Schuylkill Expressway to name a few.

Bill has served our industry as Chairman of the Executive Board of the High-

way Users Federation, chairman of Consulting Engineers Council of Pennsylvania, Examiner for the Philadelphia Civil Service Commission and as a Consultant to the Governor's and Mayor's Task Force for Vine Street Expressway Reassessment.

He is a member of A.S.H.E., A.S.C.E., N.S.P.E., P.S.P.E., P.E.P.P. C.E.C., A.R.T.B.A., I.T.E., and the Highway Users Federation. With all of the activities, Bill has still found time to raise a son and daughter, has two grandchildren, and plays a little golf. Bill resides with his wife Joan, in Bryn Mawr.

Congratulations to Bill Allen, truly our "Man-of-the-Year".

## NEW MEMBERS

### CUYAHOGA VALLEY SECTION

William C. Anderson, P.E., Wadsworth, OH  
Senior - Municipal  
James L. Beckett, P.E., Barberton, OH  
Senior - Municipal  
Jack J. Eshelman, North Canton, OH  
Senior - DOT  
Robert Klapp, North Canton, OH  
Senior - Municipal  
Ernest R. Moravec, Mantua, OH  
Senior - DOT  
James W. Garrett, Chesterland, OH  
Member - Utility

## PRESIDENT'S MESSAGE

continued from page one

Michael Tiani, Co-Chairman

412-787-1254 Business

412-745-3604 Home

### Convention

J. Dixon Earley, Chairman

717-787-4774 Business

717-767-1297 Home

### Public Relations

Dan Naranch, Chairman

RD 2, Box 93

Triadelphia

West Virginia 26059

Edward A. Novak, Broadview Hts, OH  
Member - Equipment

### EAST PENN SECTION

Steven J. Kolbe, Allentown, PA  
Senior - Contractor

### HARRISBURG SECTION

Joseph V. Capuano, P.E., New Cumberland, PA - Senior - DOT  
Barry A. Lear, Strasburg, PA  
Senior - other  
Annarao G. Patil, P.E., Lewisberry, PA  
Senior - Consultant



## FRANKLIN SECTION

J. S. Klosinski, Public Relations

Forest Hills Restaurant, 3 miles west of Tionesta on Rt. 36, was the site of the annual Installation of Officers. The traditional stuffed chicken breast was again served and roast beef was also available. The cuisine was exquisite. Golfing was available to the membership at the beautiful river course (Jack Sherman's) near Hunter, Pa.

The program consisted of a slide and oral presentation by Ronald Lee, Pennsylvania Fish Commission Biologist from Tionesta Hatchery. Some heretofore unknown aspects of the Fish Commission Programs were aptly presented to the membership by Mr. Lee.

Also on the program, as an added bonus, was the Honorable John Peterson, State Assemblyman from Pleasantville. He gave the membership an insight into the new tax funding proposal and its effect on the highway building program.

Ed Small, Forest County Maintenance Manager, hosted the meeting for the "umpteenth" time and this time presented another winner. Congratulations again Mr. Small.

The David Mead Inn, Meadville, Pa., was the site of the Franklin sections April meeting. The Honorable Roy Wilt formerly a Pennsylvania Assemblyman and recently elected to the State Senate was

continued on next page

## FRANKLIN SECTION

Program host and chairman Edgar Small, extreme right, offering his congratulations to Ronald Lee, Pennsylvania Fish Commission Biologist, who presented a slide presentation. New section president is Fran Janaszek on Mr. Small's left. At extreme left is the Honorable John Peterson, State Assemblyman from Pleasantville, who also gave an interesting presentation related to the new highway tax proposal.

The new slate of officers for the upcoming year are left to right: (standing) Tim Haslett, Treasurer; Dennis Hilton, Secretary; Dick Lugg, 2nd Vice Pres.; Fran Janaszek, President; Herb Hasbrouck, 3 yr. Director; Andy Speck, 2 yr., Director; (seated) left to right: outgoing Treasurer and the Honorable John Peterson, State Assemblyman; 1st Vice Pres., L. W. Petulla, P.E. Distr. Engr. 1-0 was absent from photo.

New members receive their certificates at the May meeting of the Franklin Section. (l. to r.) R. McClelland, K. Ishman, R. Seybert, G. Eisenhuth, D. Mohr, H. Gaston, W. Kingston, all with PennDOT, new installed President F. Janasek who presented the certificates, R. Zuber, Contractor, R. Cardone and T. Fiscus, Utility.





#### FRANKLIN SECTION

continued from last page

guest and speaker for the meeting. Senator Wilt covered a broad spectrum of the highways picture, past and future. He detailed its problems and some of the proposals that are being given consideration to lift PennDOT from its fiscal dilemma. He conceded that Pennsylvania's future outlook appears grim unless these problems are soon resolved. The inside look of the various aspects of his presentation were very enlightening and rather new and heretofore unheard.

President Suich stated that it appeared that the Franklin section had won the membership sign up award made by National. New memberships are still filtering in, so the final count should be impressive.

Tim Haslett won the 50/50 and Carol Shoup a recently signed feminine member won the good cheer prize. The section now has three female members, Carol Shoup, Amy Judson and Shirley McCuen, all of PennDOT.

Troggio's Restaurant, New Castle, Pa., was the site for the Franklin Chapter March Dinner Meeting.

The featured speaker for the evening was George Searle, President of Interstate Amesite Corp. Mr. Searle spent 23 years

continued next page



#### FRANKLIN SECTION

Recently elected State Senator, the Honorable Roy Wilt, addresses the membership and recounts his participation and function on the Legislative Transportation Committee. Former Assemblyman from the Mercer County area, Wilt related his duties with the legislative body, specifically with the highway program. Left to right at the head table are section Treasurer Dick Deihl, President-elect Fran Janaszek and at right, M. J. Suich, current section President.

One part of a large group of new members, signed up in the current membership drive, receiving certificates from President Michael J. Suich are (left to right) George Campbell, Dale Preston, Bill Pearson, Don Kruegar, Ted Farren, Robert Gilmore, Robert Ommert, Tim McCormick Sr., Gary Hawk, Robert Hurth, and Doug Robertson.

Henry A. Mastren (far right) representative of Penn-Ohio Construction Co., who served on behalf of Carmen Ambrosia as Host and Program Chairman of the March Dinner Meeting, congratulates George Searle, President of Interstate Amesite Corp. on the very interesting program he presented to the members. Mike Suich (center) Franklin President adds his endorsement for the fine presentation.





**FRANKLIN SECTION**

continued from last page

with S. J. Groves Construction Co. and was directly associated with the huge Hydro-Quebec Project in James Bay, Canada that was featured in the Engineering News Record dated 2/12/81.

It certainly was a massive and complex project involving many engineering problems and huge sums of money and constructed over a massive area. Mr. Searles' presentation certainly rated as one of the top programs presented at any of the recent Franklin section meetings. Congratulations Mr. Searle!

Winner of the evenings' 50/50 drawing was Harry Hopkins.

President M. J. Suich (far right) presents members from left to right Bob Bender of Emlenton Limestone, Carol Shoup, Rich Supel, Amy Judson and Scotty Braine, all of PennDOT.

**NEW MEMBERS****ALTOONA SECTION**

Walter W. Bagley, P.E., Altoona, PA  
Senior - DOT  
Michael M. Duffalo, Clarksburg, PA  
Senior - Utility Mgt.  
Donald D. Imes, Roaring Springs, PA  
Senior - Contractor  
Ronald P. Nicodemus, Palton, PA  
Senior - DOT  
Steven J. Novotny, P.E., Johnstown, PA  
Senior - Consultant  
Ronald L. Samuel, P.E., Altoona, PA  
Senior, DOT  
Edward Bellock, P.E., Roaring Springs, PA  
Senior - DOT  
Vincent L. Dodson, P.E., Claysburg, PA  
Senior - DOT  
Robert A. Fromknecht, Duncanville, PA  
Associate - DOT  
Richard D. Kruise Dr., Altoona, PA  
Associate - Consultant  
Robert I. Kunselman, Johnstown, PA  
Senior - DOT  
Harry C. Notestine, Saxton, PA  
Senior - Contractor  
Kent M. Shade, Hollidaysburg, PA  
Associate - DOT  
William M. Werts, P.E., Hollidaysburg, PA  
Senior - Consultant

**PITTSBURGH SECTION**

Duane R. Dishong, P.E., Pittsburgh, PA  
Senior - Utility  
Bernard J. Macy, P.E., Pittsburgh, PA  
Senior - Consultant  
Paul L. Cherry Jr., Pittsburgh, PA  
Member - Consultant

Nancy A. Urmson, Pittsburgh, PA  
Member - Consultant  
Lawrence R. Dodds, P.E., Beaver, PA  
Senior - Consultant  
Lester C. Snyder IV, Pittsburgh, PA  
Member - Contractor  
John C. Caruso, West Homestead, PA  
Senior - Contractor  
Robin M. Hetzell, Pittsburgh, PA  
Associate - Contractor

**DELAWARE VALLEY SECTION**

Bruce M. Roe, Morton, PA  
Member - DOT  
Edward J. McCann, P.E., Audubon, PA  
Senior - DOT  
Joseph F. McDermott, Philadelphia, PA  
Senior - DOT

**WILLIAMSPORT SECTION**

Harold W. Bennett, Winfield, PA  
Senior - Producer  
David H. Martz, Harndon, PA  
Senior - Contractor  
Mahendia G. Patel, P.E., Montoursville, PA  
Senior - DOT  
Dennis L. Smeltz, Pillow, PA  
Senior - Contractor  
Daniel W. Vassallo, R.S., Williamsport, PA  
Senior - Municipal  
Ronald H. Venn, Shamokin, PA  
Senior - DOT  
Ivan J. Massinger, Beavertown, PA  
Member - Contractor  
Robert D. Dalton, Selinsgrove, PA  
Associate - Producer

**SOUTHWESTERN PA. SECTION**

Anthony N. Dzurko, P.E./R.S., Perryopolis, PA  
Senior - DOT

Nicholas C. Hutnick, Uniontown, PA  
Senior - DOT  
D. Blaine Everly, Gans, PA  
Senior - DOT

**NORTH EAST PENN SECTION**

Gomes P. Gaely Jr., R.S., Old Forge, PA  
Senior - DER  
David J. Zalepa, Tunkhannock, PA  
Member - DOT  
David J. Osborne, Carbondale, PA  
Member - Consultant

**OHIO VALLEY SECTION**

Alan J. Behr, P.E., Wheeling, WV  
Senior - DOT  
Charles W. Clark, Shadyside, OH  
Senior - Contractor

**CLEARFIELD SECTION**

Nickolas R. Fusco, P.E., Clearfield, PA  
Senior - Consultant  
James A. McGee, P.E., Punxsutawney, PA  
Senior - Consultant  
Jack J. Valenza, Clearfield, PA  
Senior - DOT  
Dennis L. Diviney, Lanse, PA  
Member - DOT  
Melvin D. Knepp, Hyde, PA  
Senior - Equipment  
Arthur L. Haas, P.E., Spruce Creek, PA  
Senior - DOT  
George Holobinko, Clearfield, PA  
Senior - DOT  
John R. Pataky, Clearfield, PA  
Senior - DOT

### CHARLESTON SECTION

Yueh Fu, P.E., Lewisburg, WV  
Senior - Dept. of Highways  
Louis D. Koshar, P.E., Old Bethpage, NY  
Senior - Consultant  
Robert D. Long, Charleston, WV  
Senior - Contractor  
Douglas W. Morris, St. Albans, WV  
Senior - Dept. of Highways  
Ave. C. Zeitz, Liberty WV  
Senior - Dept. of Highways  
Samuel J. Warash, Fairmont, WV  
Member - Consultant  
Herman P. Fletcher, Charleston, WV  
Senior - Contractor  
Faramarz Mandouhi, So. Charleston, WV  
Member - DOT

### FRANKLIN SECTION

James E. Adzima, Greenville, PA  
Senior - Producer  
Ronald R. Arnold, Hermitage, PA  
Senior - Producer  
Ralph R. Beerbower, P.E., Belle Vernon, PA  
Senior - Contractor  
Norman D. Carrol, West Middlesex, PA  
Senior - DOT  
George K. Dunn, P.E., Cochran, PA  
Senior - Contractor  
Robert A. Gilmore, Meadville, PA  
Senior - DOT  
Richard A. Gracey, New Kensington, PA  
Senior - Other  
Gary E. Hawk, Conneautville, PA  
Senior - Contractor  
Howard F. Lee, Erie, PA  
Senior - DOT  
David E. Moore, Marienville, PA  
Senior - DOT  
Michael S. Gracey, New Kensington, PA  
Associate - Sales  
Joseph T. Martin, Erie, PA  
Associate - DOT  
William G. Pearson, Chochran, PA  
Associate - Other  
Robert A. Neidich, Franklin, PA  
Senior, DOT  
George L. Pellergrini, Linesville, PA  
Senior, Contractor  
John F. Tiffany, Cochran, PA  
Senior - DOT  
James S. Zurer, Meadville, PA  
Senior - Contractor  
Robert J. Zuber, Meadville, PA  
Senior - Contractor  
Riccardo A. Gardone, Warren, PA  
Member - Producer  
Ronald E. Shaffer, Tionesta, PA  
Member - Producer  
William E. Baldwin, Warsaw, IN  
Associate - Producer  
Thomas R. Fiscus, Sharpsville, PA

Associate - Utility  
William L. Jones, Franklin, PA  
Associate - DOT  
Erwin L. Monti, Medina, OH  
Associate - Producer  
William E. Snyder, Marienville, PA  
Senior - Contractor  
John C. Bernat, Farrell, PA  
Senior - Utility  
John A. Baughman, Knox, PA  
Senior - DOT  
Donald L. Harpst, Greenville, PA  
Member - DOT  
Georgia M. Rhoads, Franklin, PA  
Senior - Contractor

Leland F. Maines, P.E., Clearfield, PA  
Senior - Producer  
Dennis W. Lyons, Carlton, PA  
Member - Contractor  
Ronald R. Gessler, Franklin, PA  
Senior - DOT  
Elmer L. Parker, Centerville, PA  
Senior - DOT  
David E. Scott, Marienville, PA  
Senior - DOT  
Robert C. Irwin, Franklin, PA  
Associate, Other  
B.J. Smith, Meadville, PA  
Senior - Other  
Wendell M. Wenxel, Sligo, PA  
Senior - DOT

### NINETEENTH ANNUAL NATIONAL CONVENTION

Sheraton Inn - Shenango  
May 14-17, 1981  
West Middlesex, PA

Flash-backs of persons who were in attendance at the National Convention. The affair was well planned and enjoyed by everyone. Plan to attend the Twentieth

Annual Convention to be held in Williamsport, PA, Lycoming Hotel, May 13-16, 1982.



Getting together at the cocktail party (l. to r.)  
Lou Petulla, District Engineer PennDOT District 1-0 and 1st V.P. Franklin Section, his wife

Sheila, Mike Suich, President Franklin Section and his wife Pat.

### MORE CONVENTION PHOTOS ON NEXT PAGE

### JUST A NOTE ON PICTURES

By the Printer

1. Black and white photos are better than colored photos.
2. Some deep black photos cannot be used — get a good contrast if at all possible.

3. Be sure they are in focus.
4. Last but not least, type, if possible, your picture's captions on a piece of paper and mount this to the back of the picture, and be sure the names are spelled correctly! We cannot check spelling.

Thankyou.



## MORE CONVENTION PHOTOS

Incoming President Charles Sincavage (r.) presents plaque to Outgoing President Gene Smith (l.) as Harold Poulson (foreground) M.C. for the evening checks his notes.



Outgoing President Gene presents a dozen red roses to his wife Shirley for putting up with his presidential activities. Looking on are (l. to r.) incoming President Sincavage, State Treasurer R. Budd Dwyer, Joann Dwyer and Peg Sincavage.



Man of the Year Robert Hirschman gives his acceptance speech while others in the picture (l. to r.) Ailene and Harold Poulson; Gene and Shirley Smith and State Treasurer R. Budd Dwyer who delivered a proclamation from Governor Thornburgh.





## MORE CONVENTION PHOTOS

**Incoming President Charlie and wife Peg dressed for the Ball.**



**Enjoying the Friday cocktail party in the courtyard. (l. to r.) Helen Benes, Shirley Smith, Steve Benes, Peg Whitehill.**



**Senator Wilt, (left) and Lou Petulla (right) talk things over at Friday press conference.**



## MORE CONVENTION PHOTOS

The "Big Band" sound of Joe Cann & His Orchestra was enjoyed by all at the Friday night dance in the courtyard.



A quiet game of cards gives one a chance to relax and visit with old friends. (l. to r.) Betty Wood, Perry Wood, Leah Barnicle, Past President Hal Poulson.



Yankee Run golf course was the site of the golf tournament and the shadows in the picture are proof there was some sunshine.





## MORE CONVENTION PHOTOS

The strolling musicians were a hit at both Friday and Saturday night cocktail hours and dinners.



Head table at the Friday luncheon (l. to r.) Terry Conner, National Secretary; Dan Bittler, Ohio DOT; Dan Naranoh, West Virginia Dept. of Highways; Senator Roy Wilt, Pa. 50th District; Gene Smith; President, Charles Sincavage; 1st V.P. Tony Gaeta gave invocation and Lou Petulla, PennDOT.



Senator Roy Wilt tells it like it is at the Friday press conference.

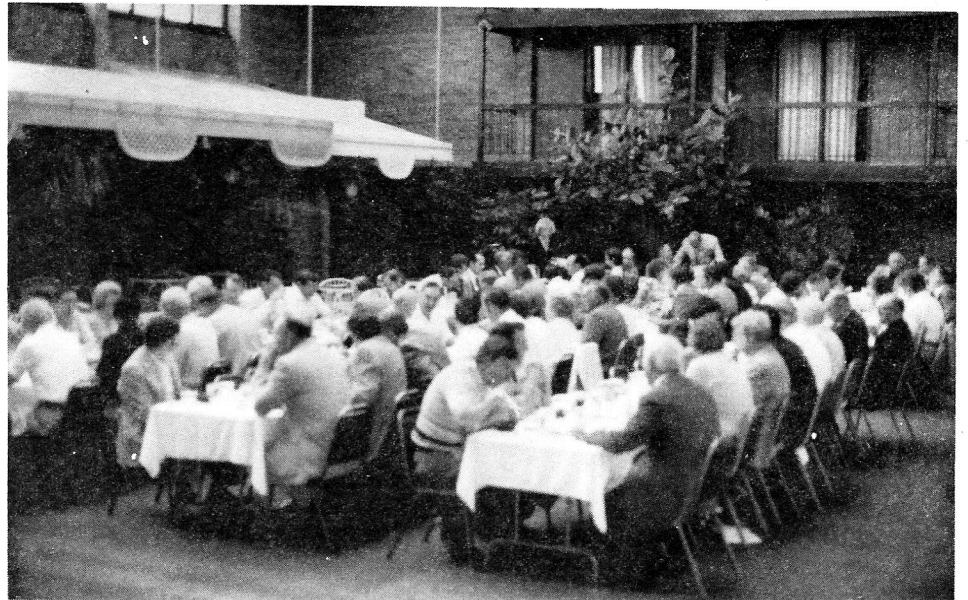


## MORE CONVENTION PHOTOS

Some of the ladies awaiting the bus for the Friday tour. Peg Whitehill, wife of General Chairman Jack Whitehill at extreme right.

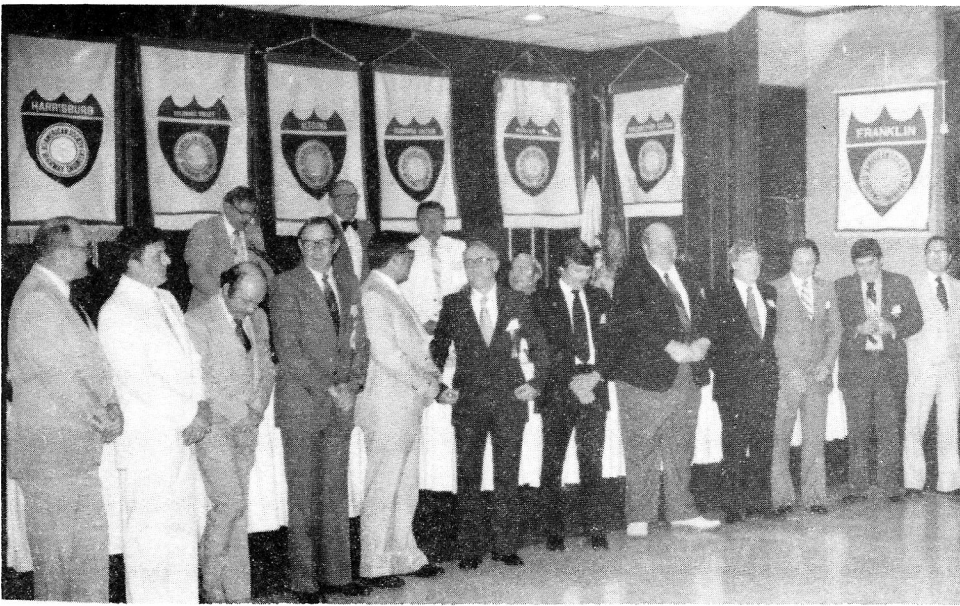


The Friday luncheon in the courtyard.



Glenn Haywood and partner kept the Friday evening dinner party in stitches.





## MORE COMVENTION PHOTOS

Past Pres. George Parrs, top left, installs new officers and directors. (l. to r.) Duane Berry, P.E., Robert Yeager, R.S., Terence Conner, P.E., William Allen, P.E., Gene Smith, P.E./R.S., J. Dixon Early, P.E., Charles Sincavage, P.E., Warren Miller, G. Michael Tiani, David Jones, P.E., Arthur Banks, P.E., Michael Suich, Charles Luff, Albert Bedard, P.E.



Friday nite entertainer Glen Haywood shows Susie Baker the old familiar cut-the-rope trick.



Past Pres. George Parrs presents Man of the Year Award to Robert E. Hirschman at the Saturday night dinner.



## IMPULSE BUYING?

People buy items on impulse for the same reason that they climb mountains — because they're there! A recent survey found that 30% of 2,000 shoppers interviewed bought unplanned items at a rate of two items per shopper. Half said they bought impulsively because they saw the item displayed. Other reasons included: price features, or more for the money 20%; family requested 9%; needed item 8%; other reasons 4%. All types of advertising, recommendations and so on, accounted, individually for less than one percent of the primary reasons.

## TIME SAVERS

Here are some tips to help you get done what should get done with a minimum amount of rush and bother:

- Make a daily schedule, indicating priority items which should be tackled first. Save trivial items for a weekly two-hour session.
- Carry blank note cards to jot down ideas and reminders.
- Have a light lunch — this will keep you from dozing off in the afternoon.
- Try to evaluate each piece of paper that comes to your desk only once.
- Give yourself bonus time off when you've completed an important project. And don't take work home.
- Concentrate on one project at a time. Select those that will bring greatest long-term benefits.
- Establish your own speed-reading techniques. Concentrate on summaries, headings and conclusions.

## PROPER MANAGEMENT WILL PROLONG AMERICA'S FORESTS

Thousands of convenient, essential products, including lumber and building materials, paper products, packaging and chemicals, fuels, such enduring benefits as fishing streams, natural trails, swimming holes, grazing land, wildlife and pure water, are all part of the great American forest. The forest is one of the most useful resources with which this planet has been blessed.

Surprising as it may be to some, all those things can and do coexist in the working commercial forests of America. Commercial forest, as defined by the U.S. Forest Service, is all forest land—whether owned by individuals, government or the forest industry—that is capable of, and available for, growing repeated crops of trees for harvest. It includes land in National Forests but not in National Parks



## Good News Department

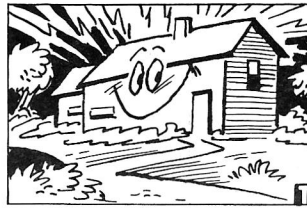
Americans may soon see our inflation rate reduced and our international prestige enhanced, thanks to the efforts of a number of dedicated researchers—and others—who are trying to decrease our dependence on imported oil.

One immediate way to help correct these problems is energy conservation. American motorists have for several years, been following this route by driving less and driving smaller cars. American industry, too, is doing its share by focusing in on the development of new technologies and making existing products more energy-efficient.

For instance, one company, General Electric, expects to spend a significant part of its \$4 billion research and development budget this year and next on energy-related technologies.

Among some of these projects now underway or successfully completed are:

- Ocean thermal energy conversion, using the difference in surface and deep ocean water temperatures to generate electricity.
- A solar photovoltaic roofing shingle, producing



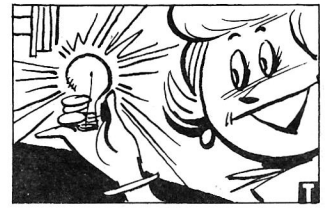
A major American company has created a roofing shingle that makes electricity.

15 watts of electricity under typical operating conditions. It's nailed directly to plywood roof sheeting.

• Development of motors that use less electric power to operate equipment, and adjustable speed drives that enable the motor to run only as swiftly as a given task demands.

• A combined cycle steam and gas turbine power plant, suitable for burning fuel processed from coal, which uses the exhaust heat from the gas turbine to produce steam to drive the steam turbine-generator. Efficiency is 20 to 30 percent higher than the most advanced conventional generating systems available today.

• Carbonate fuel cell power plants which will convert the chemical energy in fuels directly into elec-



It's also created an electric bulb that uses less electricity and lasts longer.

tricity. It can use a wide range of fuels including coal, to produce electricity.

• A new electric bulb which lasts five times longer and uses only one-third as much electricity to generate the same amount of light as an ordinary incandescent bulb.

• A new meter which measures power use at peak and off-peak periods, allowing utilities to use energy more efficiently.

• Super conducting generators, which are expected to produce as much electricity as conventional generators twice their size and weight.

It would seem that a lot of bright ideas are being formed to help us see some light at the end of the energy crisis.

or Wilderness areas.

Demands on the commercial forest are growing at an alarming rate. An expanding population is placing new pressures on the forest for recreation. Thousands of acres are withdrawn every year for homes, shopping centers and additions to Wilderness. Of even more concern, America's consumption of wood and paper products is expected to double in the next 50 years.

Fortunately, there is reason for cautious optimism if the techniques used by industry to grow more trees faster can be applied to all our commercial land. Productivity is less on privately-owned land than on industry's and is seriously lagging in National Forests.

There is a long road ahead if America is to continue to receive the multiple benefits of the forest.

## MAKE SURE YOU STAY IN THE DRIVERS SEAT

When they take away your right to drive, there'll be fewer reasons to be jolly.

There'll be fewer family picnics. Not to mention fewer fishing trips, music les-

sons, vacations, movies, golf games, symphonies, and friends outside walking distance.

And, the more you keep subtracting, the more frightening it gets. Because what you're finally left with is a reduction in our quality of life. A quality that can only come from our freedom to pursue individual interests—to get where we want when we want.

Is our right to drive really in danger? Under the Dept. of Energy Emergency Plan, the Automobile Foundation warns we would receive a vehicle sticker restricting us from driving one, two, or three days a week.

The Commerce Dept. estimates that by 1985, one-fifth of every dollar we spend on a new car will go to meet federal regulations. With inflation, the smallest American car may cost \$15,000 by the end of the decade.

Consider government actions, too. Are the regulatory agencies doing enough to find alternative energy sources of fuel and to help make our country more energy sufficient?

## OFFICERS 1980-1981

Charles J. Sincavage, P.E. .... President  
J. Dixon Early, P.E. ... 1st Vice President  
Warren A. Miller ..... 2nd Vice President  
Robert E. Yeager, R.S. .... Treasurer  
Terence D. Conner, P.E. .... Secretary  
Gene G. Smith P.E./R.S.

Immediate Past President

## DIRECTORS

3 Years Duane Berry, P.E.  
David B. Jones, P.E.  
Ronald E. Springman, P.E.  
G. Michael Tiani

2 Years Arthur K. Banks, P.E.  
David E. Baker  
Michael J. Suich

1 Year Charles E. Luff  
Albert J. Bedard Jr., P.E.  
Clarence F. Hood, P.E.  
William H. Allen, P.E.  
Daniel K. Bittler, P.E.  
Daniel V. Naranch  
Frank S. Lopez Jr.

Address Corection Requested

Robert Sherr  
Box 14 B-1 Star Route  
Jim Thorpe, Pa. 18229



## SECRETARY'S CORNER

We have admitted quite a few new members this past year. It is becoming increasingly difficult for me to process them due to legibility, especially the new member's name and address. In one case the address was omitted. I ask each section secretary to review the application and insure that the front and back are completed, so that the new member will receive all society mailings.

Sincerely,  
Terry

## EDITOR'S COMMENTS

Reports from the various members who attended the 19th Annual Convention held at the Sheraton Inn — Shenango, West Middlesex, Pa. on May 14 thru 17, 1981 said it was terrific. Although Helen and I were unable to attend, we received a very appropriate card signed by many members and their wives who were at the Convention.

The Membership campaign award of \$500 was awarded to the Franklin Section in Group No. 1. There were no winners in Groups No. 2 and No. 3. The George K. Hart award was presented to the North Central West Virginia Section. Pittsburgh Section won the attendance award with twenty three members present at the Annual Business Meeting. The Man of the Year Award was presented to Mr. Robert Hirschman. The President's Award was presented to Charles Luff for his work with New Sections.

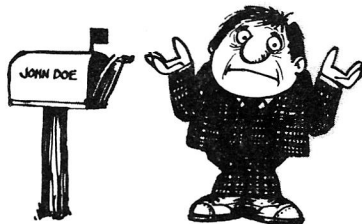
In connection with certain unscheduled

## CHANGE OF ADDRESS?

### Please Note . . .

Postage is one of our most expensive items. It costs 25¢ for each letter we get back with the wrong address. Please help us by sending us your change of address when you move.

Thank you.



## MEMBERSHIP

Altoona	119
Charleston	144
Clearfield	63
Cuyahoga Valley	92
Delaware Valley	209
East Penn	119
Franklin	270
Harrisburg	241
Ohio Valley	21
North Central, West Virginia	40
North East Penn	88
Pittsburgh	204
South West Penn	135
Western Reserve	54
Williamsport	131

Total 1,930

Dept. of Hgwy or Trans	= 36%
Consultants	= 16%
Contractors	= 20%
Other	= 28%
Professional status	= 35%

Bob Kepner and his wife, Helen, Ralph and Verna Lamont of the North East Penn Section, and our newly installed National President, Charlie Sincavage. It is good to be remembered by friends at a time like this. We hope they are not the only visitors we will have.

W. Clement Stone, insurance executive and writer: "There is very little difference in people, but that little difference makes a BIG difference. The little difference is attitude. The big difference is whether it is a positive or negative attitude."

activities, the North East Penn Section representatives presented the newly elected President, Charles J. Sincavage, P.E. with a pair of suspenders. All agreed the Convention was a huge success.

The 1982 Convention will be held at the Lycoming Hotel in Williamsport, Pa. on May 13-16, 1982 hosted by that Section. The 1983 Convention will be held at the Bedford Springs Hotel, Bedford, Pa., May 12-15, 1983 hosted, by the Altoona Section, with a National emphasis.

Future Scanner publication dates are October 15, 1981, January 12, 1982, and March 15, 1982. I should receive information for the issues by September 15, 1981, December 15, 1981 and February 15, 1982.

We were pleasantly surprised to have ASHE members visit us at our home, among them Larry and Mary Ann Opalisky of the Clearfield Section, Past President