

# ***The A.S.H.E. SCANNER***

VOLUME XIII, No. 1

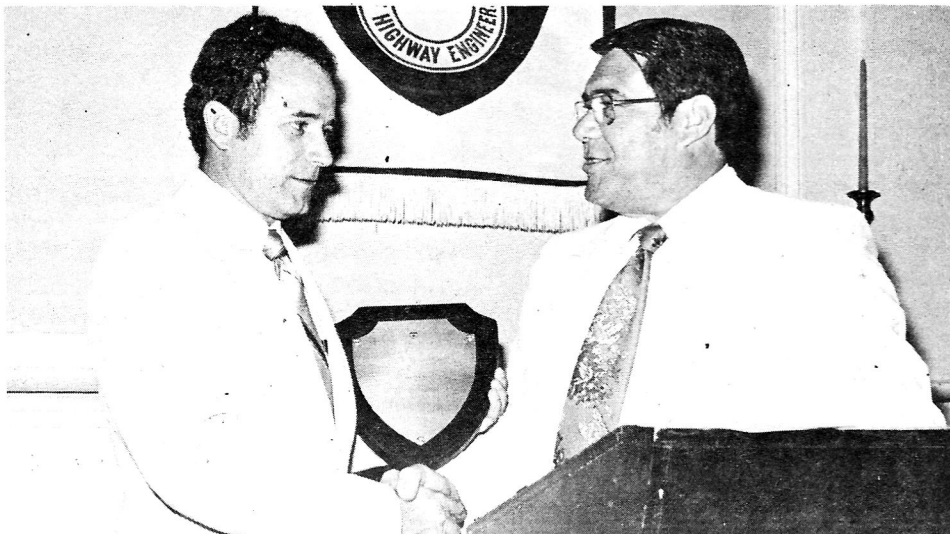
THE AMERICAN SOCIETY OF HIGHWAY ENGINEERS

SEPTEMBER 1976

## **New Society Officers are installed at the 14th Annual Convention at Bedford Springs**



The new National Officers for the American Society of Highway Engineers for 1976-77, from left to right, front row, are Robert M. Sherr, P.E., Secretary; Atwood L. Welker, P.E., Immediate Past President; John F. DeRoss, President; Joseph Martinelli, Second Vice President; and Harold C. Poulson, First Vice President. Back row, left to right, Directors Lawrence P. Opalisky, P.E., Warren A. Miller, Gene G. Smith, P.E., Joseph J. Sherman, George J. Parrs, P.E., Rudolph Melani and Albert Stallknecht, P.E. Robert E. Yeager, R.S., Treasurer, was not able to be present for the picture.



President John F. DeRoss presents a plaque to Immediate Past President Atwood L. Welker.



### ***President's Message***

Atwood L. Welker, Jr. P.E.  
Williamsport, Pa.

As I listened to William Sherlock, recently appointed Pennsylvania Secretary of Transportation, at the 14th Annual A.S.H.E. Convention held in May at Bedford Springs, I wondered why Mr. Sherlock accepted this enormous challenge involving numerous highway problems — particularly the Department's financial dilemma, the promised road projects, etc.

Then I realized that "Bill", like many of us associated with the highway industry, desired to become even more involved in making Pennsylvania's highway system the best in the Country.

Now, in order to accomplish this task, we must work together to strengthen our membership, to tell our story to our Legislators and the public, and to get involved with the many problems confronting the highway industry today. Remember, we are an organization composed of all facets of the highway industry. We must, therefore, be dedicated to the development of better roads and continue the excellent work of our last year's officers, committees and membership.

The work of our Society must be demonstrated both externally and internally. Two fine examples of external cooperation are — (1) the Transportation Policy Position letter prepared by the Harrisburg Section (see May '76 Scanner) and (2) the great number of members who wrote to their Legislators helping with the passage of the Highway Funding Bill.

An example of internal cooperation is the many hours expended by Bob Sherr, our National Secretary, in conducting the Society's day-to-day business and the recent concurrence on the proposed one

Continued on Page 3.

## BRUCE MANSFIELD POWER PLANT WASTE DISPOSAL SYSTEM DRAVO CORPORATION

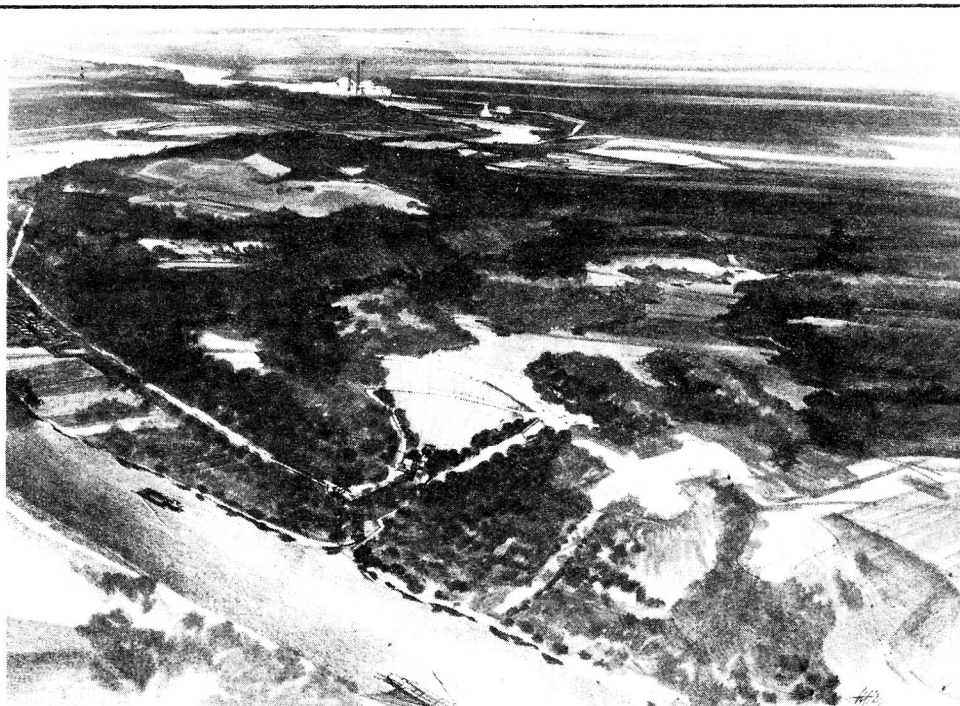
The Bruce Mansfield Power Generating Station is located on the Ohio River in Beaver County, near the town of Shippingport, Pa. When the Units 1 and 2 are completed in 1977, this coal-burning power generating station will have a capacity of 1760 megawatts. Unit 1 of the plant is scheduled to begin commercial operation in Spring 1976.

To meet air quality requirements at the Bruce Mansfield Station, all gases generated by the plant pass through a lime-slurry scrubbing system designed to remove about 99.5% of the particulate matter ("fly ash") and approximately 92% of the major offensive gas, sulphur dioxide, based on an analysis of the coal to be used by the plant. The sulphur dioxide is removed through a chemical reaction in which the gas combines with lime in the scrubbing system forming calcium salts, a solid material. The particulate matter and calcium salts are then removed from the scrubbing system in the form of a slurry — a thin mixture of water and solid particles.

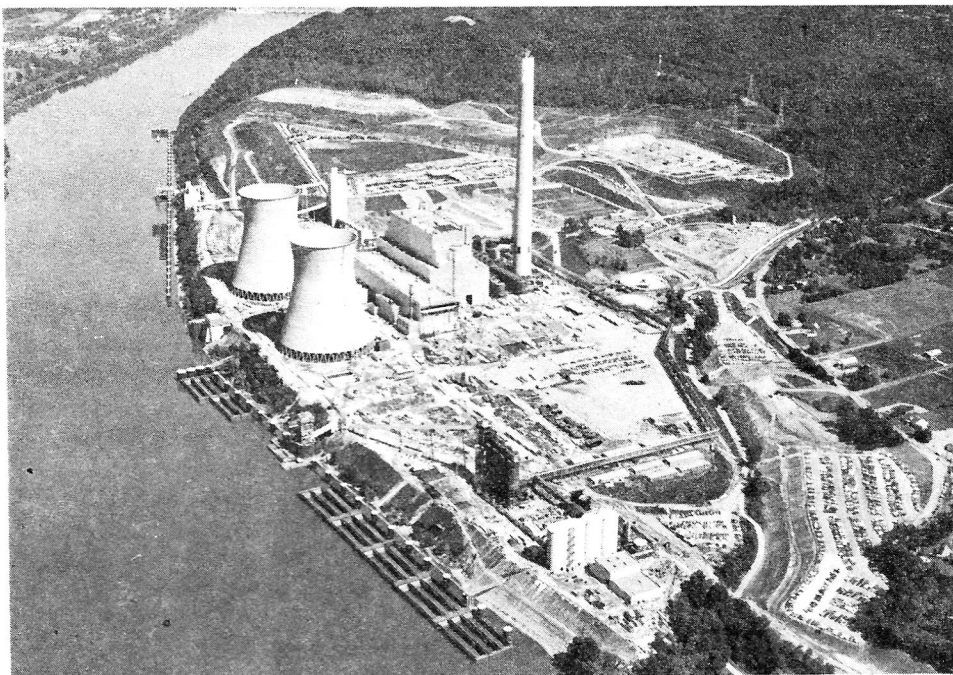
The production of the Bruce Mansfield scrubbing system, with Units 1 and 2 operating at full capacity, will be approximately 18,000 tons of slurry per day.

The solids compose about 30 to 40% of the slurry (by weight) and are extremely fine, making it quite difficult to separate the solids from the liquid. Left untreated, the substance would remain "soupy" indefinitely. However, Dravo Corporation has developed an additive which, when combined with the slurry, stabilizes the material through the formation of hydrated compounds. These compounds have a low solubility in water, and over a period of 10 to 30 days from an inert, soil-like material, which with further aging can support up to 4.5 tons per square foot.

Dravo Corporation was engaged to engineer and construct the treatment, transportation and disposal facilities for the slurry generated by the Bruce Mansfield Power Generating Station. The disposal system picks up the material in slurry form at the plant, treats it with the stabilizing additive, and transports it via pipeline approximately six miles downriver to Little Blue Run Valley, where it is deposited behind an embankment which closes the open end of the valley.



Artist's rendition of Bruce Mansfield Power Station and Little Blue Run Dam Fly Ash Settlement Basin.



Bruce Mansfield Power Generating Station located on Ohio River near Shippingport, Pa.

Here, behind the impervious earth and rockfill embankment, the slurry will stabilize and solidify, resulting in a lake with a constantly rising floor as slurry is pumped into the valley. As the solids settle out of the mixture, the water used to create the slurry is recycled to the power station for reuse in the system.

The disposal system consists of three major parts, all of which have been designed and constructed to guarantee safe and efficient operation under a wide

variety of operating conditions:

**1. Treatment and Pumping Facility:** From thickener tanks at the power station site, the slurry is pumped to nearby mixing tanks where the stabilizing agent is added. The treated slurry is retained in the tank for a period of time to insure thorough mixing. The mixture is then pumped through the pipeline to the disposal site by large capacity positive displacement pumps. The stabilizing ad-

Continued on next page.



## BRUCE MANSFIELD POWER PLANT

Continued from Page 2.



ditive injection system includes redundancy to insure a continuous supply of additive to the slurry.

2. *Pipeline Transport System:* This component can handle material over a wide range of operational load factors. The system is comprised of four transport pipelines, two 12-inch and two eight-inch in diameter. As with the pumping and treatment facility, the pipeline includes redundancy to insure continuous operation. Failsafe provisions have been included to prevent the possibility of any contamination of the environment due to spills or leaks.

3. *Embankment and Impoundment Area:* An embankment is being built at the north end of the Little Blue Run Valley to create a closed storage area for the slurry. This embankment is constructed from selected earth and rockfill obtained at the site, and has been designed in accordance with accepted engineering

practice. The embankment has an impervious core to assure containment of the water used in the system. It is founded on firm bedrock, and was designed to withstand the full hydrostatic pressure of the unstabilized slurry. Stability of the embankment has been assured under all possible operating conditions, such as rapid draw-down, rapid fill-up, and partial pool stages.

It is planned to maintain the valley in its natural state at elevations above any given impoundment stage, with vegetation being continually cleared at the edge of the rising water. All oil and gas wells and other possibilities for groundwater contamination were located and sealed prior to the placement of slurry in the valley.

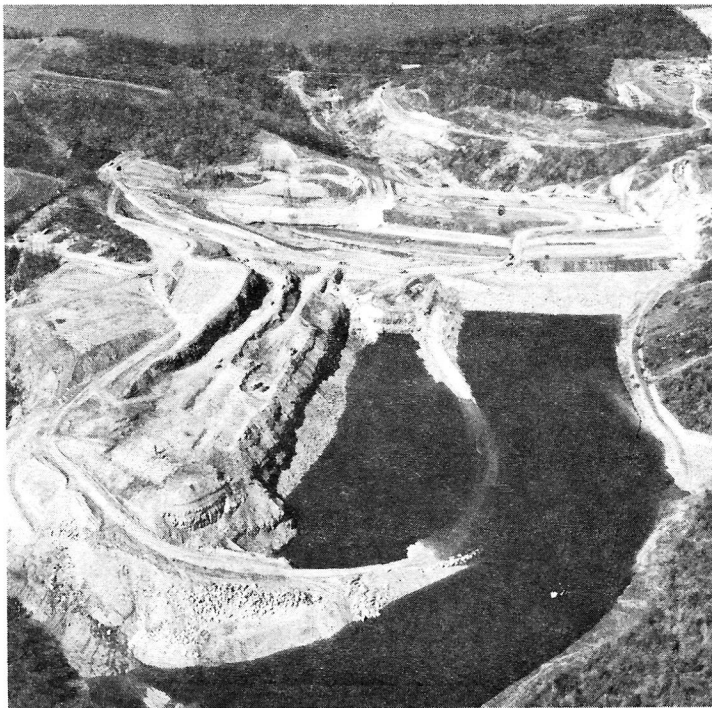
The disposal facility impounds all run-off water from the surrounding watershed behind the earth and rockfill embankment. Water used in the slurry process can be recycled via pipeline to the power station. Excess water in the impoundment which is of acceptable quality for discharge into natural streams will be pumped to the Ohio River. The system

has been designed to provide storage for the heaviest 24-hour storm that could be expected to occur over a period of 100 years. A spillway is being constructed to prevent overtopping of the embankment.

This system is designed and operated utilizing the most advanced engineering technology available to minimize adverse effects on the environment. Furthermore, flexibility has been incorporated into the design to provide for new technological developments as they become available.

The disposal process meets all Federal and State regulations concerning such installations, and has the approval of all local governmental units.

It is estimated that the Little Blue Run Valley will handle the power plant's waste disposal needs for 25 to 30 years, based on filling the valley to the 1100 foot elevation, which is about 350 feet above the natural valley floor at the embankment site. At the completion of the project, the area may be developed as a lake or dry land, depending on the local needs at that time. †



Earth and rock excavation and water pounding of Little Blue Run Dam.



Construction view of Little Blue Run Dam, Settlement Basis for Fly Ash Slurry from Bruce Mansfield Power Station by Dravo Corporation.

## PRESIDENT'S MESSAGE

Continued from Page 1.

day work shop with the Section officers and/or interested members.

As I said in my acceptance speech, as President I accept the responsibilities and

duties of this office with enthusiasm and I will make every effort to support and meet with each Section this year.

Let us all become involved, in every way possible, to further the industry which means so much to all.

—John F. DeRoss, President †

## Fear of Flying

At a travel bureau, a clerk was trying to convince a woman of the safety of air travel. She remained dubious until he came up with this line: "Madam, if it wasn't safe, would we be using the fly now, pay later plan?"



Fun at North East Penn Clambake.

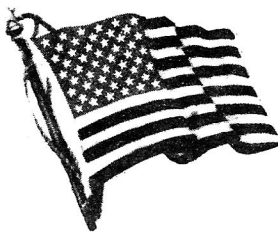
### NORTH EAST PENN SECTION

Edward S. Derbin, Public Relations

The Annual Clambake was held on June 26 at the Berry Hill Clambake Grove. Members and guests all had a good time. Oxygen was available during the baseball and volley ball games. The oxygen was used by most of the senior citizens and our secretary. (Poor Boy!)

All members of the North East Penn Section who attended the Fourteenth Annual National Convention, held at Bedford Springs, wish to extend their congratulations to the Altoona Section for their effort and work involved which made the affair a complete success.

"Over the Net" at the Clambake.



Who's tired now?!



### NEW MEMBERS

John J. Woodyshek, EIT, Forest City, Consultant.

Edward T. Shamus, Dallas, PennDOT.

Michael J. Pasonick, Jr., P.E., Wilkes-Barre, Consultant.

Christopher L. Borton, Shavertown, Consultant.





## CLEARFIELD SECTION

**CLEARFIELD SECTION ENJOYS A FIRST IN ASHE:** Congratulations to the Clearfield Section. Mrs. Yvonne L. Buck, P.E. was installed as the Section President for the year 1976-77.

Here's wishing Mrs. Buck continued success in her chosen field (PennDOT) — may she have only cooperation from all her associates.

Following is a news review of the programs during 1975-76 fiscal year in the Clearfield Section:

*September 1975:* Mr. John W. Gilliland from the H. R. Woolridge Company and Dimeling & Schrot Inc. Insurance Company presented a detailed explanation of the recently enacted "No-Fault" insurance law. He also answered the many questions put to him by those in attendance.

This was a very good and timely program because everyone was concerned with the effects this law would have. Very little actual information had been made available up to this time.

*October 1975:* Mr. Paul Knepp, who is the PennDOT Municipal Services Director for our area gave a talk dealing with the funding, construction and maintenance of local roads. This was a topic of interest since the members of ASHE are usually involved with state or federal highways and seldom come in contact with City, Borough or Township roads and streets.

*November 1975:* Mr. Roger Herzog of H. R. Imbt Company presented a program which dealt with the procedures their company goes through in preparing a bid for highway construction projects.

The members who are not connected with contracting companies got a lot of information from this meeting.

*January 1976:* The National President, Atwood L. Welker, was the guest speaker. He presented the members with an outline of what ASHE is doing to better the highway industry and some of the goals that we hope to attain in the coming years.

*February 1976:* Mr. Robert Royer, Director of PHIA, discussed factors that contributed to the present unfavorable opinion the public has of PennDOT. He pointed out what would have to be done to change this situation, and advised the members of steps they could take as an organization to help promote the highway industry to the public.

*March 1976:* For the March meeting a program was scheduled with Representative Camille George as guest speaker and his talk was to deal with the role that the State House of Representatives plays in

the highway industry. However, this meeting date fell immediately after notices were sent to a number of PennDOT employees informing them that they were being furloughed. Thus the program dealt entirely with the furlough.

*April 1976:* A film was presented which showed some of the emergency road and bridge reconstruction which took place after the 1972 flood. This program illustrated what could be done in highway work when a lot of the red tape is eliminated.

*May 1976:* The May meeting program consisted of a movie entitled "City, Cars or People". This film dealt with cities in various countries where highway and mass transportation developed without any planning and types of problems that were created. It also showed places where long range planning and cooperation entered into the mass transportation and highway construction which resulted in an efficient and attractive combination of the various types of transportation.

Of course, the first meeting of the year was in July. This was the annual picnic but the less said about what went on at the picnic the better!!!!

The members responsible for the programs for 1975-76 are to be commended for their efforts. It is unfortunate that more people in the highway industry did not take advantage of these opportunities to learn about matters that are essential to their means of livelihood. †

## DELAWARE VALLEY SECTION

John M. Evans, Public Relations

A. A. (Andy) Antonucci, who for the past six years has served as Secretary of the Delaware Valley Section, was presented a special award at the Section's May 6, 1976 dinner meeting.

The award, a large walnut plaque with a brass plate, is inscribed thus:

A. A. ANTONUCCI  
1970 — 1976

In Grateful Recognition of  
Your Dedicated Service and Untiring  
Efforts to Further  
the  
Interests of This Society  
and to  
Promote the Ideals  
Upon Which it is Founded

Andy will continue to be active in the affairs of the Delaware Valley Section. John R. Smith, General Manager of the Contractors Association of Eastern Pennsylvania, will take over as Secretary.



A. A. (Andy) Antonucci, who was honored for distinguished service to the Delaware Valley Section, A.S.H.E.

### NEW BRANCH OPENS:

Blauvelt Engineering Company has announced the opening of a new branch office located at 343 Clinton Street, Hempstead, N.Y. 11550.

The office is managed by John P. Setzler, P.E., an Associate of the firm.

### NEW MEMBERS

Austin J. Meehan, Ivyland, Contractor.  
Rudolph J. Pieretti, Brandywood, Del. Consultant.

Charles E. Staub, Doylestown, PennDOT.  
Robert H. Royer, Camp Hill, PHIA.  
Joseph P. McAtee, Philadelphia, Consultant.

James H. Weeks, West Chester, Materials Producer. †



## WILLIAMSPORT SECTION

Our Annual Ladies Night was held on April 28, 1976 at the Ramada Inn in Williamsport. About 50 members and guests attended. As usual, the event was a success. It gives the ladies an opportunity to participate in an ASHE function. Between dances, conversation ranged from fashions to pre-stressed bridges to babysitters.

The May meeting and field trip concluded our functions for the fiscal year. It included a tour of the Tioga-Hammond Dam complex, which is under construction. These projects involve building two large earth dams and the relocation of several miles of Traffic Route 15. Contracts let thus far have exceeded 100 million dollars.

Bob Santi, superintendent with S. J. Groves and Sons, acted as tour guide. Bob is well qualified to review this construction work since he is responsible for both the relocation of Route 15 and the concrete work on the dam. Highlights of the tour included viewing the large landslide which occurred where the dam was being tied into the mountain near the relocated highway. Unstable soil conditions caused the slide when the overburden was removed from the toe of the slope. A separate four-million-dollar contract was recently let to remove and stabilize the slide area.

Another highlight was the computer-operated batch plant supplying concrete

to the dam site. Elmira Transit Mix set up the plant to handle the many varied concrete mixes required with as little overrun as possible.

A third point of interest was the huge outlet structures required to regulate the water level behind the dam. The outlet conduit is a large concrete arch.

The meeting was held at the Woodshed Restaurant in Tioga, Pennsylvania after the tour. Following a smorgasboard, we installed new officers for the upcoming year. Pins and certificates were presented to the new members. The Scholarship Committee named the recipient of our annual award which goes to an outstanding student in Civil Technology at the Williamsport Area Community College.

The Chapter would like to thank the officers of the past year for a job well done. We increased our membership by 33 percent over the previous year. Our programs during the year were outstanding, which accounts for over 50 percent of our membership attending several meetings.

We would like to congratulate the Pittsburgh section on winning the George K. Hart Memorial Award by achieving the greatest percentage increase in membership.

Finally, we wish to congratulate Ats Welker for an outstanding year in guiding our national organization through a very trying period in the highway industry. We hope that he enjoys his years of "retirement".

## NEW MEMBERS

Terry Roberts, Bloomsburg, Contractor.  
Larry L. Erdley, P.E., Lewisburg, PennDOT.

Eric L. Brouse, P.E., Lewisburg, PennDOT  
John Hart, Cogan Station, Materials Producer.

Albert W. Fink, Williamsport, Contractor.  
Steven J. Hall, Williamsport, Contractor.  
Parmatha N. Beri, P.E., Lewisburg, PennDOT.

James K. Crissman, Northumberland, Contractor.

John W. Isola, Berwick, PennDOT.  
Randall J. Zeisloft, Bloomsburg, Contractor.

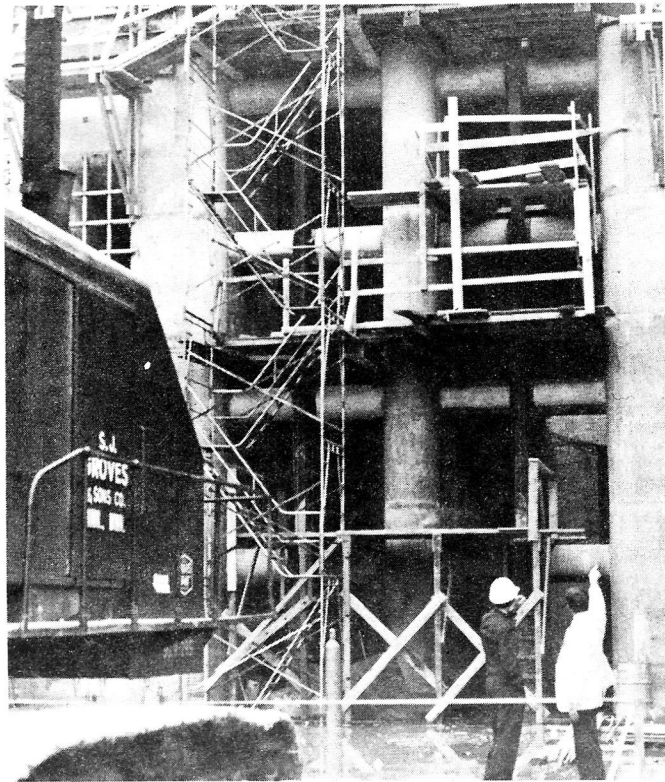
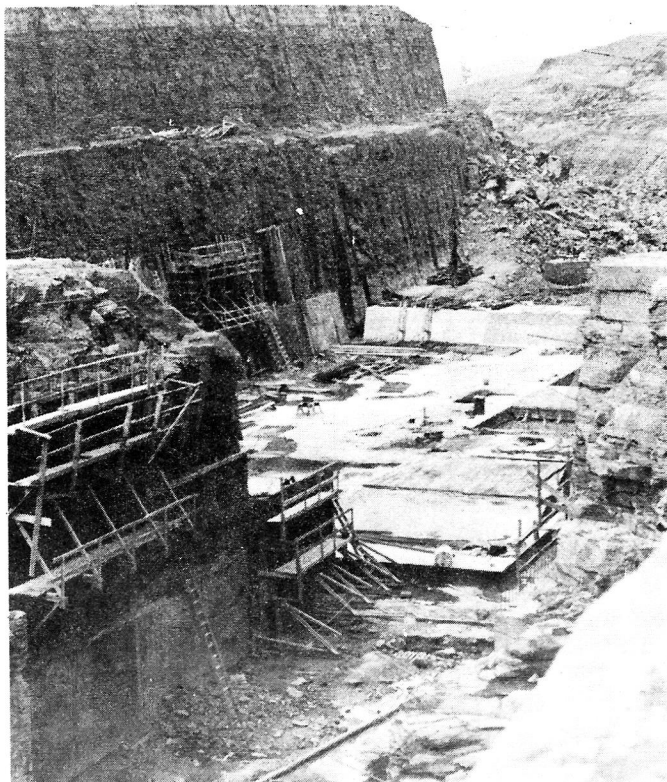


LOWER LEFT PHOTO:

Tioga Hammond Dam Complex, view of the channel being constructed between the Tioga River Valley and the Crooked Creek Valley. This channel will be used to regulate water levels in these adjacent watersheds during flood periods. This view is looking toward the Crooked Creek Valley where the Hammond Dam is being constructed.

LOWER RIGHT PHOTO:

Tioga Hammond Dam Complex, view of the inlet end of the large conduit which will regulate the water level behind the dam.





## WESTERN RESERVE (OHIO) SECTION

The third meeting of the proposed Ohio Section was held on Wednesday, May 12, 1976 at the Holiday Inn West, Youngstown, Ohio.

An attitude adjustment hour, followed by a complete dinner of stuffed pork chops, was enjoyed by approximately 25 prospective members from all facets of the highway industry in Ohio.

Mr. Robert Gladstone, Northeast District Manager of the Reinforced Earth Company, gave a very informative talk and slide presentation on the new concept of retaining wall-embankment construction. This process utilizes steel strips built into the embankment which in turn supports a vertical support wall of precast concrete slabs or metal shapes, without the expense of heavy retaining wall foundations, forms or delay of curing time.

The meeting was chaired by the temporarily elected president Mr. Dan Bittler, P.E., and it was decided by those present that the monthly meetings should be held on the second Tuesday of each month. Other temporary officers elected were: Vice President, Mr. Chuck Coleman, P.E., A. P. O'Haro Construction Company; Secretary, Mr. George Wall, Youngstown Building Materials Co.; Treasurer, Mr. Les Styers, P.E., OhioDOT. Mr. Bittler is also from OhioDOT.

A board meeting of the four temporary officers is planned for Tuesday, May 18, 1976 to plan the next four monthly meetings.

Seven of those present completed and submitted applications for membership into the Society. It is anticipated that additional prospects will complete applications at the June meeting. An item has also been placed on the agenda for the next meeting to select a section name.

A charter is being presented on September 14, 1976 to this new Section, to be called Western Reserve (Ohio) Section.

### NEW MEMBERS

Daniel K. Bittler, P.E., Youngstown, Ohio  
OhioDOT

Charles E. Coleman, P.E., Youngstown, Ohio, Contractor

Richard P. Cwynar, Canfield, Ohio, Equipment.

Donald D. Harvey, P.E., Garrettsville, Ohio, OhioDOT.

George W. Wall, Hubbard, Ohio, Materials Producer.

Nader M. Bagheri, Youngstown, Ohio, OhioDOT

Maurice C. Garman, Campbell, Ohio, OhioDOT. †



Gene Smith (right) poses with newly elected temporary officers of the proposed Ohio (Western Reserve) Section, left to right, Les Styers, P.E., Treasurer; Dan Bittler, P.E., President; Chuck Coleman, P.E., Vice President; and George Wall, Secretary.



Bob Gladstone adjusts slide projector for his presentation at the meeting of the proposed Ohio Section.

## Breaking the Worry Habit



If worries—personal and professional—have got you down, here's a suggestion from Dr. Norman Vincent Peale for beating the habit: According to Dr. Peale, a noted motion-picture producer has an interesting way of handling his problems. He decided to do all his worrying on one single day of the week, and chose Wednesday. If anything worries him on other days, he writes it down and puts it in a box to be worried about on Wednesday. When he opens the box on Wednesday, he usually finds that most of the things that disturbed him have already been settled. But a few are still worrisome, so he puts them back into the box to be worried about the following Wednesday. This whimsical but practical method really worked for him! Maybe it will for you.

**EAST PENN SECTION**

Bart Snyder, Public Relations

On May 11, 1976, our annual business meeting and election of officers for the 1976-77 fiscal year was held at the Pad-dock Restaurant in Allentown. The officers elected at this meeting are listed as follows: Immediate Past President, Carl G. Miller; President, LeRoy R. Fahringer; First Vice President, William F. Gilroy, III; Secretary, Andrew S. Stasek; Treasurer, William L. Diehl.

On June 15, 1976, a Board of Directors meeting was held, at which time the committees and members to serve on them were chosen and approved by the Board.

On May 21, 1976, our annual Ladies Night was held at the Lehigh Valley Club in Allentown. All in attendance enjoyed an evening of fine food, dancing, and good fellowship.

Members of our Section who attended the National Convention at Bedford Springs Hotel in May had nothing but praise for the Altoona Section, the hosts, who so carefully planned a wonderful convention. Your writer had the misfortune to miss his first convention ever this year, due to the fact that Mrs. Snyder was confined to the hospital that particular week.

Senior member Kenneth Fulmer finally "broke the ice" and married the girl (after much prodding by fellow employees at PennDOT). Ken and Denise J. Kalbach, of Bernville, Berks County, were married on Saturday, August 7, 1976. We all wish them much happiness.

Ken Fulmer was one of a group of three of our other members who assisted the Captain of the Judy "H", a fishing boat out of Barnegat Light, New Jersey, the other members being Jack Deschu, Larry Turoscy, and Ralph Creveling. The assistance was rendered in form of "chumming" from the rear of the boat, thus enticing the fish to accept the bait others had to offer.

On September 4, 1976, the annual Stag Picnic of the Section was held at the Oriole's Picnic Grove in Lehighton. †

**FRANKLIN SECTION**

MAY 1976:

The annual meeting of the Franklin Section was held on Wednesday, May 19, 1976 at the Forest Hills Restaurant in Tionesta. Fifty-four members and guests participated in the attitude adjustment hour, followed by a delicious dinner of stuffed chicken breasts.

The highlight of the meeting was the installation of the new officers and the handing down of the gavel by outgoing President Gene Smith. The new officers are: President, Mr. Jack Sherman; First Vice President, Mr. Robert Gerwick; Second Vice President, Mr. Jack Whitehill; Secretary, Mr. Arnold Wright; Treasurer, Mr. A. J. Osborne, P.E.; Directors, One Year, Mr. Robert Bretz; Two Years, Mr. R. T. Fox, P.E.; Three Years, Mr. C. F. (Hank) Hood, P.E.

Following the installation, President Sherman presented the Past Section President's pin to outgoing President Gene Smith.

An interesting program was presented by Mr. James Diversi, P.E., of the Bureau of Materials, Testing and Research, covering the various methods of recycling bituminous concrete pavements. Although each method may vary, the basic idea is to heat the surface of old, worn out, bituminous paved roads to a temperature that permits a mechanical stripping or removal of a specific depth of old surface. The stripped material can then be "sweetened up" with additional asphalt and/or additional aggregate, remixed, replaced and recompacted to serve again as a finish surface.

The major advantages of this method are (1) the reclaiming of top quality aggregates, which are becoming more and more in short supply, (2) the production of a nominal depth surface course with the use of a minimal amount of liquid asphalt, in keeping with the nation's fuel crisis, and (3) the production of that surface at a lower "bottom line" price, an asset to the state's fiscal problems. This recycling can also be employed on higher type roads by placing a finish course of new material on top of the recycled surface. The method can also be used to "plane" or remove bituminous build up in cities to restore curb reveal.

The conclusion of the meeting was the drawing of the 50/50, won by Joe Klosinski.

**JUNE MEMBERSHIP MEETING:**

Approximately 25 members of the Franklin Section ASHE and guests attended the tour of the I-90 paving operation in Erie County on the afternoon of Wednesday, June 15, 1976. Although rain interrupted and postponed the actual placement of concrete on the 21 million dollar continuously reinforced concrete pavement overlay project, and interesting tour was conducted by Mr. Don Leggett, PennDOT Project Engineer.

The group then returned to the Spartan

Inn where they were joined by some thirty additional members and guests who all enjoyed an attitude adjustment hour from 6:30 to 7:30 p.m. Dinner was served at 7:30 p.m. in a private banquet room and consisted of a delicious buffet style dinner with three different meat entrees.

A short business meeting, which included a vote of appreciation to the co-hosts for the meeting, Mr. Robert Fulmer and Mr. Woods Brown, was followed by the introduction of the speaker of the evening, Mr. Robert Lucas, General Superintendent for Denton Paving and Construction Company.

Mr. Lucas gave a resume of what was actually viewed in the field and then presented a very informative film covering the actual placement of C.R.C. pavement.

President Sherman called on Gene Smith for a report on the Ohio Section and discussed future meetings.

**JULY PICNIC MEETING:**

The annual picnic of the Franklin Section of the American Society of Highway Engineers was held on Wednesday afternoon and evening July 21, 1976. The picnic was held at the Izaak Walton Club grounds on the Polk Cut-Off, and was attended by approximately eighty members and guests.

Although the weather had been bad and rain appeared to be the order of the day, the committee of Arnold Wright, Don Hart and Gene Smith did a very effective "anti-rain" dance and the storm clouds disappeared at about 4 p.m. and a beautiful evening resulted.

Co-Chairmen Al Grandelis and Lou Kraft were on hand to greet the members as they arrived, and although Gene Smith "cooked" his hand while barbecuing the steaks, everyone enjoyed a complete steak dinner with all the extras.

There was no planned program, but a lot of "do you remember?" yarns were exchanged and the last of the group finally got away around midnight.

The August meeting will be the annual golf outing, and this year will be at the Riverside Golf Course in Cambridge Springs on August 18, 1976.

**NEW MEMBERS**

Regis C. Wright, Franklin, PennDOT.  
Peter J. Laskaris, Erie, PennDOT.  
Rodney H. Zeller, Franklin, PennDOT.  
Sakrepatna, R.S. Prasad, Franklin, PennDOT.

Wasinder S. Mokha, P.E., Erie, Consultant  
Edward T. Vidic, West Sunbury, Contractor. †



# ASHE CONVENTION AT BEDFORD SPRINGS

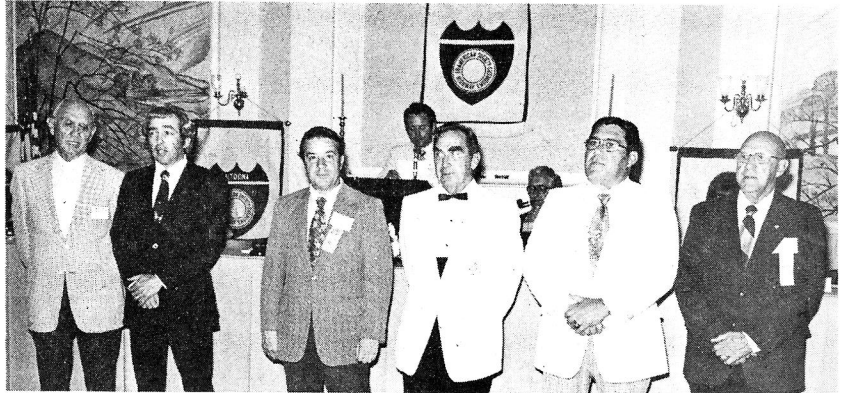
All convention photos  
by ERCOL ACRI



Left top photo: John DeRoss, President-Elect ASHE; Honorable William Sherlock, P.E., Secretary of Transportation; Atwood Welker, retiring President ASHE.

Left bottom photo: Jim Barnicle, Past National President, Bud Shuster, Congressman, Harold Poulson, First Vice President.

Right top photo: Ralph Lamont and Jack Sherman, Directors; Joe Martinelli, 2nd V. President; Harold Poulson, 1st V. President; John DeRoss, President; Robert Sherr, Secretary.



William Sherlock receives Honorary ASHE Membership from 'H.C. Poulson.

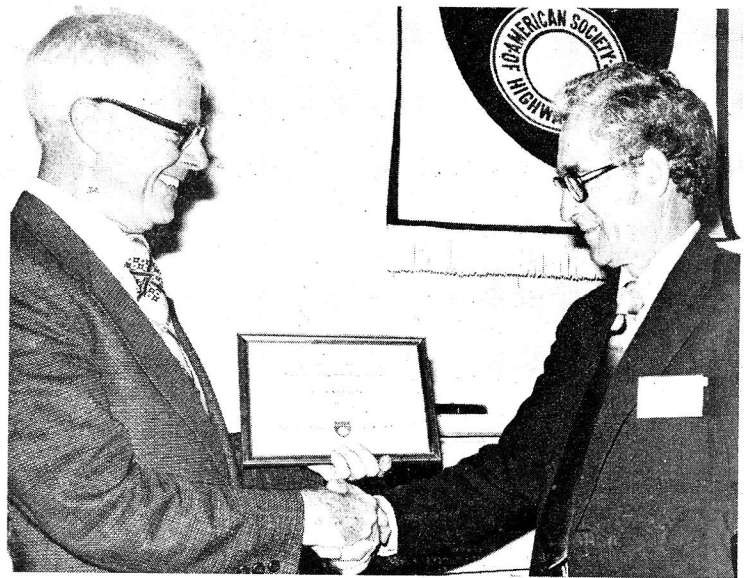


Convention Committee: Chuck Welker, Karyn McKee, Bill McKee, Charles Weidley, Donald Fix, Nevin Wantz, Gary Malsatski, John Young, Dave Stiffler, Jim Baker.

Left top photo: President-Elect John DeRoss.

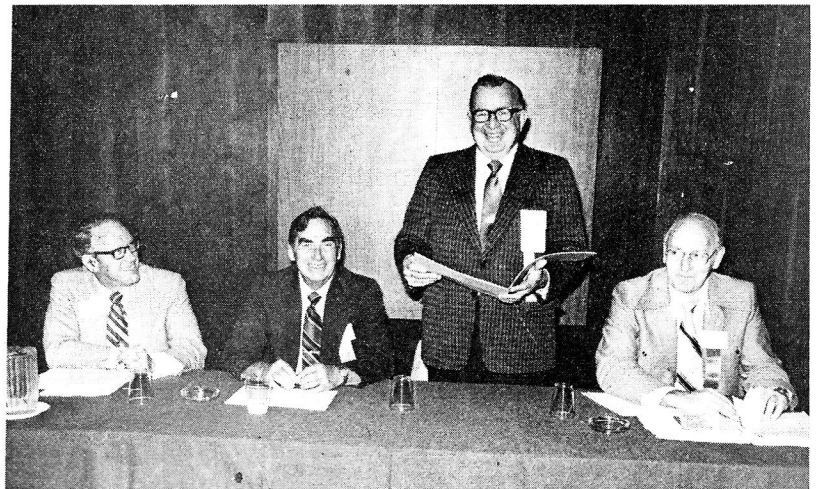
Left center photo: Presentation of George K. Hart Award to Tony Gaeta, Pittsburgh Section, by Atwood Welker.

Left bottom photo: John Fail, Membership Chairman; Atwood L. Welker, and A. J. Gaeta.



Presentation of "Certificate of Appreciation" to R. Masqueler from Norm Cochrane.

Technical Workshop: Rob Royer, Harold Poulson, James Barnicle, and Joyn Young.



Past Presidents' Table: Colonel and Mrs. Russell Horn, Mr. and Mrs. Robert Martzall, and Mr. and Mrs. James Barnicle.



## More convention photos



Left top photo: Enjoying the Friday Night Dance.



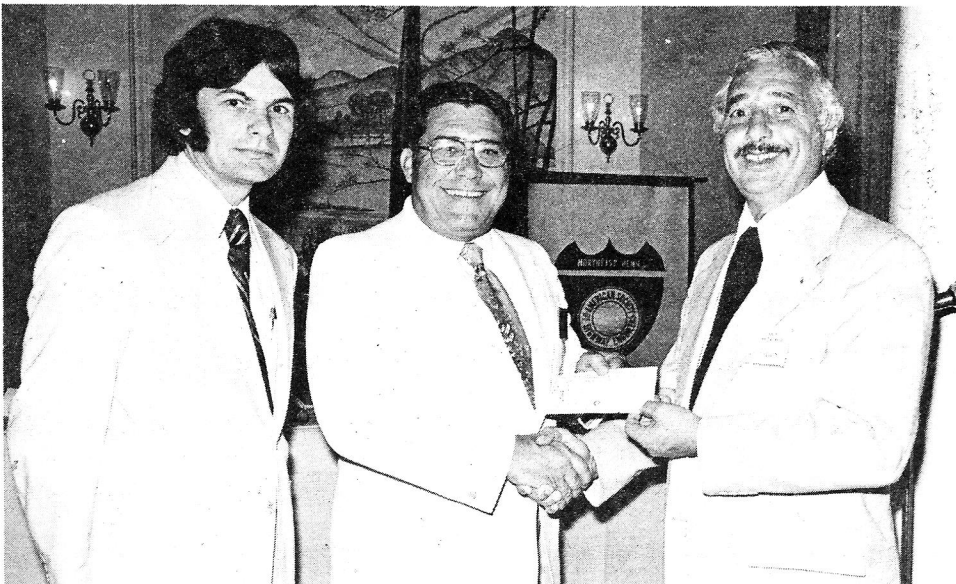
Right top photo: Congressman Bud Shuster at podium.



Left bottom photo: Mr. and Mrs. Bob Kolbach; Mr. and Mrs. Guy Gunn; Mr. and Mrs. Dick Howe; and Mr. and Mrs. Hank Heck.



Right bottom photo: Card Party by P.H.I.A.

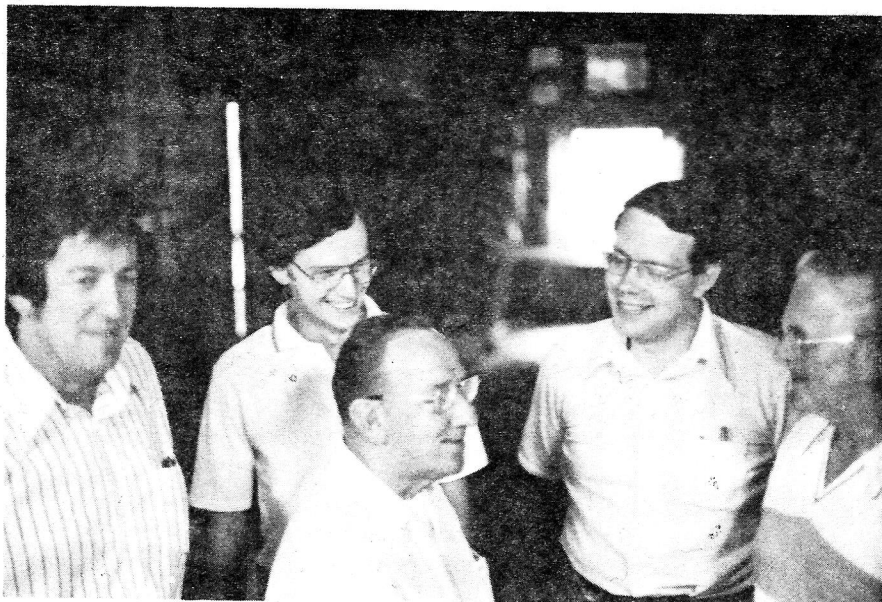


### PITTSBURGH SECTION

John DeRoss, center, newly elected National President, being presented a \$50 Bond Award by A. J. Gaeta, Pittsburgh Section President, for being "top man" in the Pittsburgh Section Membership Drive for 1976. "Accolades" to John for recruiting 20 new members. Looking on at left is John Fail, our energetic Membership Chairman.

## FRANKLIN SECTION

Outgoing President Gene Smith, right, hands down the gavel to incoming President Jack Sherman.



Left to right, Lou Kraft, co-host, along with Bob Gill, Terry Farren and Jim Nelles, listen to words of wisdom (?) from Gus Guenther, in the foreground.



Franklin Section President Jack Sherman is caught up in the comradery preceeding the dinner meeting.







## FRANKLIN SECTION

The old lamplighter, Ken Robertson, gets things started by charging the charcoal pit.



Gene Smith, head chef, flips a steak to Bill Ritchey while Charlie Mergl helps himself. Bruce Matthews, with plate in hand, advises co-host Al Grandelis that he's next.



New Franklin Section President Jack Sherman, left, presents certificate of appreciation and paperweight to the speaker, Mr. James Diversi, P.E., at the May meeting.



## FRANKLIN SECTION

Mr. Don Leggett, Project Engineer for PennDOT, explains the operation, while a good view of pre-placed reinforcing bars is shown here.



Mr. Robert Lucas, General Superintendent for Denton Paving and Construction Company, explains the fine points of C.R.C. pavement overlay.



## Your Health

### How to Lift and Carry

Sprains, bruises and hernias are some of the results of improper lifting and carrying. Industrial safety engineers make these suggestions: ☐ Make sure you can lift the object. Otherwise, get help. ☐ Position yourself for good balance, with feet eight to 12 inches apart. ☐ Stand close to the base of the object so that your back muscles won't bear all the weight. ☐ Lower yourself by bending your knees, and keep your back as straight as possible. ☐ Push up with your legs, keeping the load as close to your body as possible. Raise the object to the most comfortable carrying

position, but make sure it doesn't block your view.

### Strengthen Your Memory

Scientists tell us that the human mind can store up to 600 memories a minute for a lifetime of 75 years without strain. So when you have trouble recalling, lack of mental exercise is probably the reason. Here are some tips on improving your memory: ☐ Concentrate on the important; be selective about what you want to remember and don't clutter your cranium with useless information. ☐ Find a reason for remembering. Relate what you want to remember to your interests. ☐ Repeat what you

want to remember. ☐ Visualize an association before letting it sink into your mind. ☐ Fit memories into a pattern. If you write something down, don't bother to remember it. There's no need to burden your mind if you've already made a note of it.

### CAPSULE COMMENT

The chances are good that someone is about to steal your car, especially if you make a habit of leaving your keys in the ignition. Almost half the cars that were stolen had the keys left in the ignition, and most of the rest were left unlocked. California, the state with the largest number of vehicles registered, had cars and trucks worth more than \$100 million stolen last year.



## HARRISBURG SECTION

Henry L. Heck, Public Relations

The Harrisburg Section of the American Society of Highway Engineers held their annual Ladies nite on Saturday, May 8, 1976 at the Carlisle Country Club, Carlisle.

More than 100 people attended to witness the swearing in of the new Officers and Directors for the 1976-77 term. They are: President, John P. Rutter, P.E.; First Vice President, Alfred F. Lyng, P.E.; Second Vice President, Robert Turgeon, P.E.; Secretary, Thomas R. Benyo, P.E.; Treasurer, John H. Gilliland, P.E.; Director, one year, Henry L. Heck and John C. Galbraith; Director, two years, Albert R. Stallknecht, P.E. and David H. Schaper, P.E.; Director, three years, William D. Pickering, P.E. and Philip C. Hanford, Jr., P.E.

A check for \$100 has been presented to Mr. Nick Theofanis of West Virginia University as the winner in the Harrisburg Section's annual student paper competition.

Life membership in the Harrisburg Section was granted to the following: William Alexander, Donald R. Conrad, Thomas McLoughlin, Norman E. Miller, Harold Poulson, also Secretary of the Pennsylvania Department of Transportation William Sherlock was presented with an honorary membership in the Harrisburg Section.

The fall schedule of meetings begins with an ASHE-PSPE-American Congress of Surveyors joint clambake to be held Friday, September 17, 1976.

Our monthly dinner meetings will again be held at Harding's Restaurant, Camp Hill and conducted under the very able leadership of our new President John P. Rutter, P.E., Vice President, G.A. & F.C. Wagman, York, Pa.

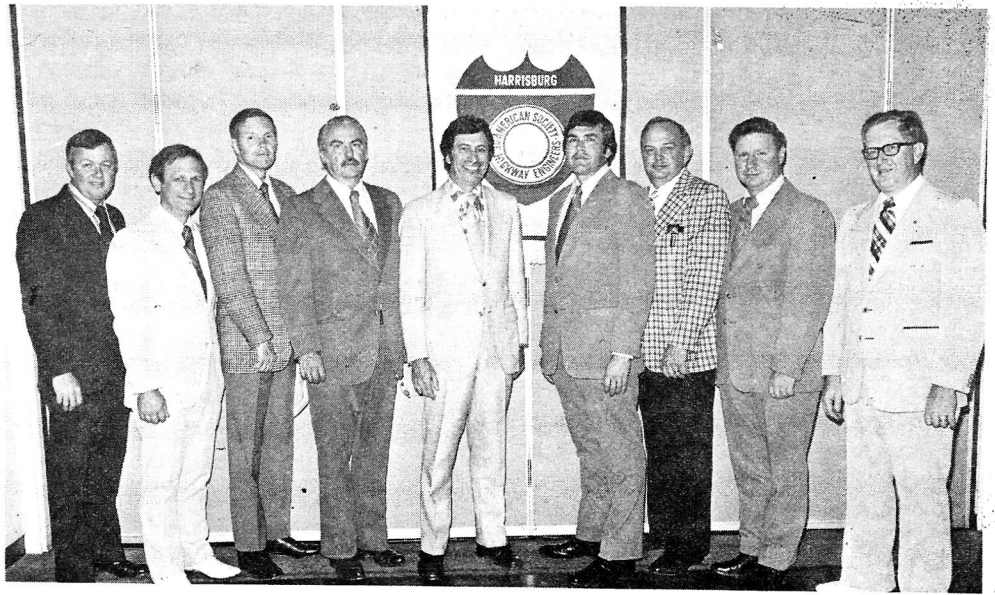
### NEW MEMBERS

William H. Sherlock, P.E.  
Richard W. Muza, Camp Hill, Consultant  
Ronald C. Brown, R.S., Duncannon, PennDOT.  
Richard E. Marshall, Elizabethtown, PennDOT  
John B. Shand, P.E., Camp Hill, Consultant. †

## ALTOONA SECTION

### NEW MEMBERS

Raymond D. Morningstar, R.S., Hesston, PennDOT. †



Harrisburg Chapter ASHE Officers pictured, left to right, are Henry L. Heck, Director, one year; William D. Pickering, P.E., Director, three years; Philip C. Hanford, Jr., P.E., Director, three years; John H. Gilliland, P.E., Treasurer; Alfred F. Lyng, P.E., First Vice President; John P. Rutter, P.E., President; Robert Turgeon, P.E., Second Vice President; Albert R. Stallknecht, P.E., Director, two years; Dave C. Sims, Outgoing President. Not pictured are Thomas R. Benyo, P.E., Secretary; John C. Galbraith, Director, one year; and David H. Schaper, P.E., Director, two years.



Pictured above, left center, is outgoing President Dave C. Sims, P.E., Deputy Secretary for Highway Administration PennDOT and his wife Lois as he hands the gavel to incoming President John P. Rutter, P.E. G.A. & F.C. Wagman, Inc. of York and his wife.

## SOUTHWEST PENNSYLVANIA

### NEW MEMBERS

Henry C. Stack, Pittsburgh, PennDOT  
Sam C. Gallaher, Uniontown, PennDOT  
Mark R. Morris, Waynesburg, PennDOT †

### Clams and cards

It seems quaint to us that our ancestors used clamshells and beads for money, but then I wonder what they'd think about a walletful of little plastic cards!

### Straight Talking

Sign on a car driven by an Indian girl in New Mexico: "Love America or give it back."

"The best pay I ever got was experience, which is still the most valuable thing in the world. It is the only thing that no man can take away from me." — Henry Ford

## PITTSBURGH SECTION

Henry J. Kuczynski, Public Relations

The March 10, 1976 meeting of the Pittsburgh Section is another fine example of the successful series of interesting and well planned programs that have been conjured up by Program Chairman, Bob Niedzielka. Membership attendance has been extremely good, even in adverse weather, which attests to the fact that Bob has really done his homework. First Vice President-elect Charles Way, did an outstanding job of presiding at this meeting, in the absence of Anthony Gaeta, who was unable to attend due to a pressing work schedule.

The main speaker for the evening was Larry Lobdell, P.E. who is the Project Director for the "Bruce Mansfield Power Plant Waste Disposal System", being built by the Dravo Corporation of Pittsburgh.

This multi-million dollar project was engineered and is being constructed by Dravo for the express purpose of processing and disposing of fly ash slurry from the \$800 million coal burning Bruce Mansfield Power Generating complex located on the Ohio River southwest of Pittsburgh.

Daniel Kelly, P.E., Project Manager for the Little Blue Run Dam project, an earth and rock settlement basin for the fly ash slurry, assisted Larry Lobdell in his talk and slide presentation.

At the April 14, 1976 meeting of the Pittsburgh Chapter of the American Society of Highway Engineers, Mr. Alan W. Schwarz of United States Steel Corp., presented a slide illustrated presentation relating to paving applications of steel fiber reinforced concrete. United States Steel is a producer of a steel fiber termed USS Fibercon. This product consists of slivers of steel one inch in length, .01" in thickness, and .022" in width.

Steel fiber is introduced to concrete much indeed as another aggregate. The fibers provide up to 75,000 individual reinforcing elements per cubic foot of concrete.

Slides were presented showing the material's unique resistance to impact loading as well as increased resistance to first cracking, ultimate failure, abrasion, and spalling. The product has been employed at a number of trial paving overlay installations, among them bridge decks in Turtle Creek, Pa., and New Cumberland, Pa. Its most recent application was a six inch thick transit parking overlay at the McCarran International Airport in Las Vegas, Nevada, where 60,000 square yards were applied over a three inch thick

deteriorated asphalt surface. Mr. Schwarz illustrated a number of other overlay applications where steel fiber reinforced concrete was applied either directly — or in a debonded fashion, to shattered concrete, rutted concrete, and both old and new asphalt.

Steel fiber reinforced concrete appears to be a potentially attractive candidate material for the resurfacing of the many thousands of miles of our nation's highways which will require rehabilitation over the next decade.

### NEW MEMBERS

Ashutosh G. Acharya, P.E., Pittsburgh, PennDOT.

Howard F. Lutz, Allison Park, Contractor.

Donna Incagliato, West Mifflin, PennDOT. Harold F. Scott, Washington, Contractor. Santi Thamwiwat, P.E., Pittsburgh, PennDOT.

Edwin C. Wang, P.E., Bethel Park, PennDOT.

Morris Kisilinsky, Pittsburgh, PennDOT. J. Eric Mann, EIT, Industry, Consultant. John E. Marks, Clairton, PennDOT.

Mohinder P. Gupta, P.E., Pittsburgh, PennDOT.

Virgil Q. Barton, P.E., Clairton, PennDOT. Joseph D. Farbacher, Pittsburgh, PennDOT.

George Bowes, Pittsburgh, PennDOT. Neal A. Schorr, Pittsburgh, Washington & Jefferson College. †



Chuck Way presenting Certificate of Appreciation to Larry Lobdell, P.E., Dravo Corp., at the March 10, 1976 Pittsburgh Section meeting.



Larry Lobdell, P.E., Dravo Corporation, at podium; seated, left to right, Bob Niedzielka, Program Chairman; Chuck Way, Second Vice President; and Frank Lemmon, Secretary, at the March 10, 1976 Pittsburgh Section meeting.



## PITTSBURGH SECTION

First Vice President Raymond R. Gedrock honors Charles H. Simpson with a Life Membership in ASHE Pittsburgh Section at the April 14, 1976 Pittsburgh Section meeting. "Charlie" recently retired from PennDOT after 35 years of service.



Alan W. Schwartz, U.S. Steel representative, at podium, fields questions on his presentation of U.S.S. Fibercon - Steel Fiber Applications in Concrete Construction at the Pittsburgh Section April 14, 1976 meeting. Looking on, left to right, are John Fail, Ray Gedrock, First Vice President, who presided at this meeting, and Charles Simpson.



John Fail, (holding certificates) Pittsburgh Membership Chairman, officially welcomes a group of new members who were initiated at the May 12, 1976 Pittsburgh Section meeting.



## 1976 — 1977 NATIONAL OFFICERS

President, John F. DeRoss, Pittsburgh, Pa.  
 1st V.P., Harold C. Poulson, New Cumberland, Pa.  
 2nd V.P., Joseph C. Martinelli, Pittsburgh, Pa.  
 Secretary, Robert M. Sherr, P.E., Jim Thorpe, Pa.  
 Treasurer, Robert E. Yeager, R.S., Hollidaysburg, Pa.  
 IPast Pres., A. L. Welker, Jr., P.E., Williamsport, Pa.

## Directors, 3 Years

Joseph J. Sherman, Tionesta, Pa.  
 Ralph C. Lamont, Conyngham, Pa.  
 Robert L. Rowland, Willow Grove, Pa.  
 Joseph Raynock, Allentown, Pa.

## Directors, 2 Years

Lawrence P. Opalisky, P.E., Curwensville, Pa.  
 Warren A. Miller, Ebensburg, Pa.  
 Rudolph Melani, Cheswick, Pa.  
 Neal R. Smith, Selinsgrove, Pa.

## Directors, 1 Year

Gene G. Smith, P.E., Franklin, Pa.  
 George J. Parrs, P.E., Dallas, Pa.  
 Albert Stallknecht, P.E., Camp Hill, Pa.  
 Barry R. Gunter, Morrisdale, Pa.



The American Society  
 of Highway Engineers  
 Box 14-B1, Star Route  
 Jim Thorpe, Pa. 18229  
 RETURN REQUESTED

U.S. POSTAGE PAID

NON-PROFIT ORG.



PERMIT No. 1.

DILLSBURG, PA.

## Secretary's Corner

With the beginning of a new fiscal year, I wish to extend greetings to all the new Section Officers — may you have a good year. Should there be any questions as to the functions and duties of your office, do not hesitate to give me a call. Contact your predecessor for files and any pertinent information he may have so that you may be aware of what has been done in the past. When your term expires they go to the new officer.

With the revisions to the Constitution and By-laws approved, the Section Secretaries will be required to reclassify the existing Junior, Associate and Affiliate members. When you have done this, notify me of action taken so I may bring my records up to date on the reclassifications.

It is imperative that all Section Officers read minutes of National's Board meetings and comply with any requests and/or suggestions contained therein. This is the purpose of furnishing copies of minutes to all Sections.

Since this issue of the Scanner has been devoted to the activities of the 14th Annual Convention at Bedford Springs, Pa., we have not included all the items received from the various Sections. They will be included in future issues.

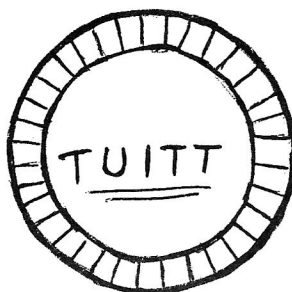
My wife, Helen, and I had a wonderful

time at the 14th Annual Convention and it seems that each Host Section tries its best to out-do the others. Keep up the good work.

For the next issue of the Scanner (December 1976) I should have the information for publication no later than November 15, 1976. This means all items concerning the Section should be turned over to your Public Relations representative in ample time so he may forward the items to me prior to the above mentioned date. †

## SOMETHING FOR EVERYONE

How many times have you said — when asked why something was not done — “I just never got around to it.” Well — here is one — a round “Tuitt”. Keep it with you at all times and you will be able to accomplish whatever must be done as you now have gotten around “to it”. Let it do the job for you!



## MEMBERSHIP

Section	Members
Altoona	126
Clearfield	87
Delaware Valley	257
East Penn	147
Franklin	228
Harrisburg	300*
North East Penn	107
Pittsburgh	305
Southwestern Penna.	115
Western Reserve (Ohio)	7
Williamsport	152
Total	1,831

\*Subject to adjustment.

TRAFFIC FATALITIES  
DECREASE IN 1975

Although highway travel is now running ahead of the pre-energy crisis level, highway traffic fatalities in 1975 were 17 percent below the 1973 level. An estimated 45,674 lives were lost in traffic accidents in 1975, about 9,000 fewer than in 1973. A new report by the National Highway Traffic Safety Administration gives credit to a wide variety of safety programs, including improvements in street and highway design. A major factor, NHTSA says, is the national 55 mph speed limit. †