

# ***The A.S.H.E. SCANNER***

Volume VI, No. IV.

THE AMERICAN SOCIETY OF HIGHWAY ENGINEERS

April, 1970

## **8th ANNUAL CONVENTION AT HERSHEY TO BE WELL ATTENDED**

What is expected to be the largest attended convention of the American Society of Highway Engineers at the Hershey Hotel, Hershey, Pa., on May 8th to 10th will feature a keynote address by Director of the U.S. Bureau of Public Roads Ralph R. Bartelsmeyer, Washinton, D. C. and other prominent highway industry officials.



**BARTELSMEYER**

according to General Chairman Donald C. Rimmer.

The entertainment program will include an "ice-breaker" party on Friday at 6 p.m. when renewal of old friendships and making of new acquaintances will bring together the early arrivals. The Saturday morning program will feature an outstanding work shop program for section officers and others who desire to attend.

The Saturday luncheon will feature the address by Mr. Bartelsmeyer, remarks by Secretary of Highways Robert G. Bartlett and others. The Saturday afternoon business meeting will see the election of the new officers and directors for the 1970-1971 fiscal year, together with reports and discussions of the year's experience by sections. On Saturday evening the annual banquet will take place, followed by dancing.

Particular attention is directed to the hotel rates at Hershey, which rates in-

clude meals. This feature is responsible for the low registration fee, which this year is applicable to members of the Society only, and not to guests.

Besides golf, the entertainment program will include a tour of the famed Hershey Chocolate plant and the beautiful rose garden of the chocolate town.

Reservations should be made early by those who plan to be guests at the hotel, and should be made direct with the hotel management.

The keynote speaker at Saturday's luncheon has been director of the U.S. Bureau of Public Roads since May 8, 1969 and is eminently well known in the highway industry. He is a native of Illinois and was educated at the University of Illinois where he majored in civil engineering and was graduated with a B.S.C. E. degree in 1932.

From 1932 until his present appointment at his Washington post, Mr. Bartelsmeyer was engaged as a junior highway engineer with the state of Illinois, county highway engineer of Washington County, Illinois, technical field engineer for Marquett Cement Manufacturing Co., of Chicago, county highway engineer of St. Louis metropolitan area, chief engineer of the Illinois Division of Highways, and vice president of H.W. Lochner, Inc., a consulting engineering firm in Chicago.

He has been president of the Illinois Association of County Superintendents of Highways, the Illinois Engineering Council, American Association; he has

continued on page three

### ***President's Message***

The annual membership meeting and convention are but a few days away when the administration of the American Society of Highway Engineers will be passed on to new hands. New, but not inexperienced. Robert E. Martzall, P.E., who will become the eleventh national president, has been active in the Society since its inception and is exceptionally well qualified to lead us during the coming year. John H. Leapson, P.E. and Robert L. Brown, P.E., who will become first and second vice presidents, are no less qualified and will form a great team.

I have been fortunate in having had the wholehearted cooperation of these men and all the national and sectional officers, as well as the committee members, for which I am sincerely grateful.

My special thanks to our untiring national secretary, Ralph T. Smith, without whose help I would have been hopelessly lost. I sincerely hope that he will continue to contribute to our Society for many years to come.

**ROBERT S. KEPNER, P.E.**  
President

### **BRING BANNERS ALONG !**

All A.S.H.E. section presidents are urged to bring their section banner for display at the luncheon and banquet of the Eighth Annual Convention at Hershey on May 8th to 10th. These should be turned over, upon arrival, to the registration desk, where they will be picked up by Robert H. Kalbach, program chairman, and can be retrieved from him after the Saturday night banquet and dance.



AMERICAN SOCIETY of HIGHWAY ENGINEERS

# 8<sup>th</sup> Annual Convention

See You In  
"Chocolate Town" MAY 8·9·10<sup>th</sup>.

## WONDERFUL GOOD WEEK END

*being planned for You & Mrs.  
in the land of the...*

### Pennsylvanie Dutch Country

*Make your Plans Now to attend*

SPEAKERS FELLOWSHIP

GOLF DANCING COCKTAILS TOURS

#### HOLIDAY SNOWSTORM ONE OF THE MOST SEVERE

When snowstorms affecting most of Pennsylvania are recalled, the one on Christmas Day, 1969 must rank among the most severe.

Up to 20 inches of snow blanketed large sections of the Commonwealth. With 10 to 20 inches on the ground when the storm started, the depth reached 40 inches in the mountainous areas of the Hollidaysburg, Allentown and Montoursville districts.

Winds up to 45 miles per hour created serious drifting problems during the following five days.

Headquarters in the Central Office for maintenance operations went on an emergency basis to coordinate activities in the statewide battle.

Philadelphia was hit by snow and rain



Route 22 near Indiantown Gap, Lebanon County cleared for two lane traffic. Snow had to be removed rather than plowed in many areas.

while only the Pittsburgh area escaped with only light snowfall.

Snowdrifts of 10 to 15 feet were common. Sections of I-81 were closed for brief periods in Franklin and Schuylkill counties. Helicopters and snowmobiles were pushed into service.

PDH maintenance forces were taxed to the limit, but once again were the unsung heroes. They were on the go for nearly a full week with little more than rest breaks. It was a short Christmas Day for most, and a holiday season over-loaded with work.

\* \* \* \* \*

Appius Claudius, Roman censor, built the road, famous in history, known as the Appian Way.

\* \* \* \* \*

What's the use of grumbling if they give you a difficult task? Think of bigger jobs ahead while you're doing what they ask!

\* \* \* \* \*

**TECHNICAL CROSS SECTION**

continued from last page

Publications Department 805, 2101 Constitution Avenue, N. W., Washington, D. C. 20418.

**STUDY SHOWS WAYS TO IMPROVE HIGHWAY SURFACE SMOOTHNESS**

More motorists could be enjoying smoother rides on the nation's concrete highways if the suggestions of a two-year study on control of pavement roughness were followed by most highway pavement contractors.

And, as a side benefit, thousands of dollars -- the results of reduced highway pavement placing and maintenance costs -- could stay in the taxpayer's pockets.

A New York State highway study indicates that highway pavement contractors, by careful practice of some simply followed steps, can control pavement roughness to a point that it would require less initial conditioning and less long-term maintenance.

The report reveals five construction practices that produce pavement roughness: (1) backing up of final paving machines, (2) use of less than three screeds or leveling surfaces in the finishing machine operation, (3) finishing without using a finishing float, (4) crowning the pavement rather than placing it flat-across and (5) paving only a lane at a time on multiple-lane highways.

Other factors significant to road roughness are equipment, road subbase, materials mix, labor, supervision, drainage, forms and joints. The profilograph (a machine to measure pavement roughness) was found particularly useful. It's a simply operated machine and capable of transferring data to a usable form. Other factors could override the best statewide control, but a practical, systematic approach to roughness control could benefit contractors as well as the driving and taxpaying public.

**EXAMINE EFFECTS OF SALT STABILIZED COHESIVE SOILS**

Sodium chloride has been used for many years as a stabilizing admixture in select base course material. However, little, if any, investigation of the engineering properties of sodium chloride stabilized cohesive soils has been made.

In a report two researchers described

the effects of sodium chloride and sodium chloride-lime admixtures on plasticity, compaction, and strength properties of two high-volume-change cohesive soils.

The two researchers presented experimental test results after reviewing available literature and discussing chemical and physical relations that occur during stabilization.

They found that small percentages of sodium chloride added to raw soil had negligible effects on soil plasticity while increasing compacted density and decreasing optimum compaction moisture content. Increased workability and moisture retention qualities were also observed.

When the researchers added small percentages of sodium chloride to lime-modified soils, similar results were obtained; that is, compacted density was increased, optimum moisture decreased, and the workability and moisture retention properties of the salt-lime mixtures were enhanced considerably over those of lime-modified soils.

In addition, salt-lime treatment produced strength gain over those obtained by lime treatment alone. This occurred both at the maximum compacted density and optimum moisture for each treatment, and when the soils were compacted to similar moisture and density conditions.

**WILDLIFE FLOURISHES ON UNMOWED HIGHWAY RIGHTS-OF-WAY**

Wildlife will flourish along the millions of acres of roadsides and interchanges of the interstate highways if the land is left in a natural state.

Researchers of North Dakota State University set forth the results of a unique experiment in which alternate miles of I-94 right-of-way in North Dakota were left unmowed.

High nesting success was achieved by this method. Ducks responded quickly to cessation of mowing when some 74 percent chose unmowed parcels for nest sites. Accordingly, the researchers urged that the "vast acreage" of interstate system right-of-way which supports a variety of birds and mammals "warrants wildlife management attention."

In North Dakota alone, an estimated one million acres of rights-of-way await wildlife habitat management. Much of

this real estate is publicly owned and and thousands of maintenance dollars are already budgeted, more often to destroy wildlife habitat than to improve it.

While the report was directed principally to waterfowl, it pointed out that the right-of-way supports many other forms of wildlife including upland plovers, American bitterns, killdeer, mourning doves and a "host of song birds and mammals. Besides the cessation of mowing saves the highway department money while improving wildlife habitat.

**NATIONAL CONVENTION**

continued from page one

been chairman of the executive committee of Highway Research Board of the National Academy of Sciences, and of the policy committee of the Chicago Area Transportation Study.

His professional and fraternal affiliations include membership in National Society of Professional Engineers, American Association of State Highway Officials, American Road Builders Association, Highway Research Board, Society of American Military Engineers, and he is a registered professional engineer and land surveyor in a number of states. He is also a member of the Elks, Masons and the Shrine.

In 1962 he was named one of the top ten public works men-of-the-year and has received the Thomas H. MacDonald Memorial Award.

**FRANKLIN SECTION**

Andrew J. Speck, Public Relations

The Nominating Committee has selected the following slate of officers for the new year beginning June 1, 1970:

President, Albert P. Fiscus, P.E.

1st Vice President, Arnold G. Wright.

2nd Vice President, Roswell E. Brown.

Secretary, Richard T. Fox, P.E.

Treasurer, Andrew J. Speck

Director, 3 Years, John A. Stanek

Director, 2 Years, Richard J. Harmon

Director, 1 Year, Willis A. Bryan, P.E.

The Section's annual venison dinner was held on February 25th at the Franklin Club and was, as usual, well attended.

**NEW MEMBERS**

Robert B. Offutt, P.E., Franklin, Pa., P.D.H.

Daniel S. Matko, Barnesboro, Pa., Contractor

William Riddle, Clintonville, Pa., Contractor

Clarence J. Trott, Erie, Pa., Contractor

Kenneth K. Robertson, Saegertown, Pa., Equipment Distributor



## DISTRICT 12 IMPORTANT SEGMENT OF P.D.H. ORGANIZATION

One of the most important engineering districts of the Pennsylvania Department of Highways is District 12, comprising the southwestern Pennsylvania counties of Fayette, Greene, Washington and Westmoreland, and supervised by one of the most popular engineers in the highway industry, James H. "Jim" Mifflin, a registered professional engineer, who is a Senior Member of the Southwestern Pennsylvania Section of A.S.H.E.

It was back in 1931 that District 12 headquarters was first established in Uniontown, Pa. In 1955, the district office was moved to its present location along the Old Connellsville Road, north of Uniontown, tucked away in the beautiful western foothills of the Allegheny Mountains in Fayette County. In 1966 a wing was added to the district building to accommodate the needs for the ever expanding activities of this district, and the growth of the area.

Assisting District Engineer Mifflin, who has had more than 34 years of service with the Pennsylvania Department of Highways, and has been the district engineer since 1963, are Harold M. Harper, P.E., as deputy district engineer, and three assistant district engineers: Terrence D. Conner, P.E., for construction, James B. Wilson, P.E., for operations, all of whom named above are Senior Members of the Southwestern Pennsylvania Section of A. S.H.E., and Thomas W. Lyons, Jr., for pre-construction.

Today the district is responsible for the maintenance of 3859 miles of highways and 2460 bridges. Westmoreland County has the distinction of having more miles (1,306) of roadway to maintain than any other county in the state.

The population of the four counties exceeds 895,000, embracing 10 third class cities, 89 boroughs, four first class townships, and 94 second class townships. Washington is the district's largest city with 23,545 residents.

There are 1,631 employees in the district, of which 547 are assigned to the district office. Nearly half of the district employees (237) form the construction unit.

The engineering design and liaison departments currently are engaged in the preparation of plans for 130 projects, to-

talling 310 miles. Estimated cost is \$425 million.

One of the critical projects is the completion of Interstate 79 between Waynesburg and the West Virginia line. This 14-mile section is the only remaining portion of the Interstate System in the District that remains to be completed. It is anticipated that this section will be open to traffic during 1972. Ninety miles of I-70 and I-79 have been completed in this district since the inception of the program.

District 12 serves an area that recently has undergone a big industrial expansion, which partially was motivated by highway improvements, mainly to the primary system. The largest of these is the Chrysler Corp. Assembly Plant in the New Stanton Area.

Also, two power plants are being constructed near Point Marion and Mason-town in Greene County. This is supplemented by rapid expansion of the Industrial Park located on Route 119 north of Uniontown, together with the recent opening of the new Penn State Center.

The Uniontown district has a rich, historical background in that it embraces the major portion of the National Pike which was created by an Act of Congress in 1806, extending from Baltimore, Md. to

Wheeling, W. Va.

This was opened to traffic in 1818 and operated as a toll road from 1835 to 1905. The Toll House at Searights Cross Roads, four miles west of Uniontown, is today a historical landmark along present Route 40.

Another attraction is the Western Pennsylvania Conservancy Park which includes Falling Waters. This is considered the residential master piece of Frank Lloyd Wright, the nationally illustrious architect, that is of cantilevered construction, anchored in rock and suspended over a creek known as Bear Run.

During the past year approximately 20,000 visitors, including architects from all corners of the earth, were conducted on tours through the 500 acres of natural mountain terrain that surrounds Falling Waters.

Other points of interest in the district include Ferncliff Park adjacent to the famous Ohiopyle Falls; the monument that marks the spot where Gen. Braddock was killed during the French and Indian War; Fort Necessity National Park, which recently was restored in commemoration of Washington's defeat during the same war; the Methodist Center known as Jumon-

continued on page five



UNIONTOWN DISTRICT STAFF: Front row, from left, James H. Mifflin, district engineer; and Harold N. Harper, deputy district engineer. Back row - Thomas W. Lyons, assistant district engineer, pre-construction; James V. Wilson, assistant district engineer, operations; and Terrence D. Conner, assistant district engineer, construction.



**DISTRICT 12**

continued from page four

ville that is located on Summit Mountain; and the Laurel Caverns.

Supplementing these points of interest are numerous recreational areas consisting of ski resorts, public golf courses and picturesque summer resorts, such as Somerfield Dam.

All of these points of interest, both recreational and those with a rich historical background, make this area quite attractive to visitors and tourists. PDH's long range highway program is continually being planned and scheduled to meet the daily needs of the area.

**HARRISBURG SECTION**

Clyde C. Holler, Public Relations

The annual scholarship award presented each year to an engineering student residing within the area of the Harrisburg Section, and attending a college of engineering has been made to Frank Kempf, of New Cumberland, a student at Villanova College. The award is in the amount of \$250.00.

The nominees for the various offices of the Harrisburg Section covering the year 1970-1971 are as follows:

President, Donald C. Rimmer  
1st Vice President, John V. Rignani, P.E.  
2nd Vice President, William A. O'Connor  
Secretary, Gene H. Strausbaugh, R.S.  
Treasurer, John H. Gilliland, P.E.  
Director, 3 Years, James F. Lobach, Jr. P.E.

These directors are continuing their present terms:

Director, 2 Years, J. Dixon Earley  
Director, 1 Year, Clyde C. Holler, Jr.

As host for the National Convention, May 8, 9, and 10 in Hershey, Pennsylvania, this section has been busy with preparations. Our committees, under the General Chairmanship of Don Rimmer, are:  
Finance, Guy Gunn and Bill O'Connor  
Advertising, Ray Grove and Al Lyng  
Program and Entertainment, Bob Kahlbach and Harold Poulson  
Registration, Al Bedard, Jr. and Tom McLaughlin

Reception, Bob Bartel and Walter Burke  
Publicity, Bob Martzall and Clyde Holler  
Each of these committees have many more men working on the job of making this convention a fulfilled, smooth running, successful event.

We will be having one membership

meeting prior to the convention on April 13th, at which time our featured speaker will be Vic Anckaitis, Deputy Secretary and Chief Engineer of the Pennsylvania Department of Highways.

We are pleased to announce that two of our members, Robert E. Martzall P.E. and Edward W. Boggs, P.E. have recently been promoted by Capital Engineering Corporation, of Dillsburg, to the positions of vice-president. Both are active in our section and Martzall is currently vice-president of our national A.S.H.E.

**NEW MEMBERS**

Allen D. Forshey, Harrisburg, Pa., P.D.H.  
Robert P. Platt, P.E., Harrisburg, Pa. P.D.H.

**WILLIAMSPORT SECTION**

Jack A. Reigle, Public Relations

The new decade dawned on us and our first program of 1970 was entitled "Corrugated Metal Structures", presented by Mr. Fred Shin and Mr. Clyde Holler, of Republic Steel Corporation, Harrisburg, Pa. They spoke and showed films on the installation of corrugated metal pipe and corrugated pipe arches.

At our February meeting we were presented a film entitled "Gateway To The West". This film depicted the engineering, fabrication and construction of the St. Louis Arch by the Pittsburgh Des Moines Steel Company. Mr. Dorn McGrath, of Pittsburgh, was scheduled to narrate but unfortunately was snow bound in Warren, Pa. However, he had sent the film ahead and it was shown to us by our secretary, Mr. George Hart. The film had an excellent sound track and left very few questions unanswered. I believe that the rest of the building of this "arch" was truly one of the most exciting engineering and construction feats of our modern times.

Our March meeting program, "Tomorrow's Roads Today", was brought to us by Mr. John Quigg, of Bethlehem Steel Corp. Mr. Quigg spoke and showed films on the merits of continuous Reinforced concrete pavements.

For our April meeting we are anticipating having Mr. Gary LaFrance from F.T. Kitlinski and Associates, Harrisburg Consultants. Mr. LaFrance will speak on the design of highway pavements in Pennsylvania from the viewpoint of the soils engineer.

In the month of May we will have our

annual field trip. This year we will be touring the Pennsylvania Power & Light's Montour Power Station being constructed at Washingtonville, Pa.

Nominations of officers for 1970-71 for the Williamsport Section are:

President, Warren E. Cole, Contractor  
1st Vice President W.O. Faylor Jr. Contractor  
2nd Vice President, Paul E. Heise, P.D.H.  
Treasurer, A.L. Welker, P.D.H.  
Secretary, George Hart, Materials

Three new directors were also nominated for 3 years and they are:

Robert Leighton, Materials  
Richard Fought, Contractor  
Kenneth Larson, P.E., P.D.H.

Election for these offices will be held at our May meeting.

The membership is looking forward to the convention in Hershey, Pa., and we hope to have a good representation from our section present.

**NEW MEMBERS**

James W. Orner Treas. & Off. Mgr. Central Builders Supply Co., Sunbury, Penna.

Total membership of the Williamsport Section to date: 93.

**FORMER DISTRICT ENGINEER WITH CONSULTING FIRM**

Announcement has been made of the affiliation of Benjamin M. Givens, Jr.,



GIVENS

P.E., a member of the Pittsburgh Section, A.S.H.E., and formerly the district engineer of the P.D.H. Pittsburgh District, with the consulting engineering firm of General Analytics, Inc., of Pittsburgh, as manager of their High-

way and Transportation Division.

He graduated from the University of Pittsburgh, completed graduate work at the bureau of highway traffic at Yale University and the Fels Institute at the University of Pennsylvania, he is a member of the American Society of Civil Engineers, the Highway Research Board, Institute of Traffic Engineers, American Institute of Planners, the American Society of Public Administration, and the Society of American Military Engineers.

## A.S.H.E. PRESIDENT - DESIGNATE AND COLLEAGUE ARE ADVANCED BY CAPITOL ENGINEERS

Announcement has been made of the promotions of two prominent members of the American Society of Highway Engineers in their consulting firm of Capitol Engineering Corporation at Dillsburg, Pa.

Promoted to vice president and elected to the firm's board of directors were Robert E. Martzall, P.E., of Dillsburg, who is nominated as the new president of A.S.H.E. for the new year beginning June 1, 1970, and Edward W. Boggs, P.E., of Mechanicsburg, Pa. Both are veteran members of the Harrisburg Section where they have performed outstanding service for the Society.

Announcement of the promotions was made by Robert E. Smith, P.E., president of Capitol Engineering Corporation.

Martzall will be responsible for the firm's civil engineering projects. He is 43 years old and a graduate of Vanderbilt

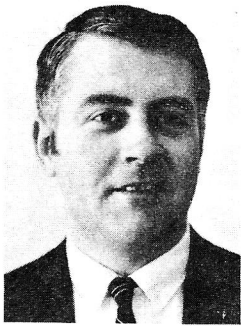


MARTZALL

University and has been associated with Capitol Engineers for the past 17 years, starting in 1952 as a Highway Designer. His previous experience included highway design work with Davidson County, Tennessee, and with the Pennsylvania Department of Highways. During his tenure with Capitol Engineers he has had highway design responsibility as project engineer on many miles of both urban and rural expressway projects in Pennsylvania, North Carolina, Tennessee and Connecticut. He was also in charge of various design reports for the relocation of highways required by flood control reservoirs, feasibility and location studies and numerous other projects, including municipal work. He is a member of National Society of Professional Engineers (Vice President, Harrisburg Chapter, PSPE), American Public Works Association, Consulting Engineers Council, and American Association for the Advancement of Science.

Boggs will be responsible primarily for all soils engineering work, an increasingly

important phase of the firm's activities.



BOGGS

Mr. Boggs, 35, is a graduate of Massachusetts Institute of Technology. He has been with the firm since 1962, prior to which he worked in soils and foundation engineering work for a large engineering construction company. His assignments with Capitol Engineers have included complete responsibility for soil investigations, laboratory testing and recommendations to the client, based on engineering and economic analysis, on various highway projects, bridges, port facilities, dams, industrial and sanitary facilities throughout the Eastern United States. He is a member of the American Society of Civil Engineers, National Society of Professional Engineers, Consulting Engineers Council (Chairman of various committees), and the International Society of Soil Mechanics and Foundation Engineering.

Capitol Engineering Corporation, together with affiliated firms, Capitol Engineering Associates and Robert E. Smith, Consulting Civil Engineer, is internationally known, having been providing services in the field of consulting civil engineering for the past 25 years both in United States and at various locations throughout the world. The construction value of projects which this firm has engineered is in excess of \$1 billion, most of which is in the field of highways and bridges. A notable foreign project was the engineering of a highway and bridge rehabilitation program in South Vietnam which was completed in 1962 after six years of effort, at a cost of about \$75 million.

### INDIANA SECTION

Joseph S. Dolan, Public Relations

The February meeting of the Indiana Section was held on the 27th at the Rustic Lodge in Indiana. Featured speaker was Mr. James Richards, Soils Engineer for the Pennsylvania Department of Highways. Mr. Richard's topic of presentation was "The Use of Geophysics in Design and Construction of Highways". His slide illustrated documentation, based on various

highway construction projects in Pennsylvania, expressed how the use of seismology correlated with core boring samples can present a reasonably accurate description of sub-soil strata formations.

The Section was honored to have as a guest, Mr. Robert S. Kepner, P.E., National President of the American Society of Highway Engineers. Mr. Kepner commented on the function of the Society and the contributions it has made to the highway industry, notably the support given to the recent automobile registration fee increase.

The Nominating Committee of the Indiana Section composed of Lou Serian, Chairman, Joe Schork, Tom Farabaugh and Dick Haines, have nominated the following members for election to Section offices for the 1970-1971 term:

President, James A. Byron, P.E.

1st Vice President, Wendell B. Neal

2nd Vice President, John R. Ralston, Jr., P.E.

Secretary, Edwin F. Leone, P.E.

Treasurer, William D. Haines

Directors,

Delvin E. Kerr

Franklin G. Malone

John S. Patrick

Our April meeting will be held on the 17th at the Rustic Lodge in Indiana. Guest speaker for the evening will be Mr. A.C. Ackenheil, of Ackenheil Associates, Inc., a consultant engineering firm.

### SOUTHWESTERN PENNSYLVANIA SECTION

Robert M. Sica, Public Relations

The Southwestern Pennsylvania Section held its March meeting on the last Wednesday of the month and it proved to be one of the very best. The turnout of 39 members and guests enjoyed a most pleasant social hour which preceded the dinner. The meeting which followed immediately was convened with President Joe Martinelli in charge.

An informative business session was held with President Martinelli making a determined plea for everyone to make an honest endeavor to attend the national convention to be held in Hershey. Approximately ten of those present indicated they will attend the affair on May 8, 9 and 10. A number of those unable to attend the section meeting had previously indicated they will be in attendance also.

continued on page seven

## SOUTHWESTERN

continued from page six

The president appointed a committee of Ernie Padgett, Allan Jones, John Fleming and Ernie Barber to plan for the annual Ladies Night affair which is scheduled for the latter part of May. No pertinent details are available as this article goes to press but section members will be kept informed. Suffice to say that it will be an outstanding affair and is deserving of a near perfect attendance by everyone. Fellows, tell your wives about it now or else let them read this article !

President Martinelli called upon First Vice President Terry Conner to present certificates of membership to Frank Merendino and Donald Ryan, both from the construction unit of the Department of Highways, District 12-0. Other new members present and introduced, included Stephen Kosick, Fred Stout, Wayne Roseneel and Samuel Ammirato. All are affiliated with the Highways Department in various capacities and are welcome members to the Section.

John Fleming, chairman of the membership committee, in presenting his report, stated that eleven new members are expected to join the Section within the next several weeks. This influx of new people will place the membership well over one hundred.

The nominating committee presented a slate of officers to be acted upon at the April meeting. Those listed included:

President, T.D. Conner  
1st Vice President, H.J. Bunting  
2nd Vice President, John Fleming  
Secretary, David Baker  
Treasurer, George Jenkins  
Directors, Ernest Padgett  
H.G. Brady  
Ernest Barber

All members are reminded that nominations may be made from the floor prior to the election on the night of the meeting.

A fine and excellent program was offered through the courtesy of Michael Baker, Jr. Inc. A color film entitled "Three Plus Three" which tells the story of the construction of the last three tunnels constructed on the Pennsylvania Turnpike was presented with Joseph G. McCaw, chief tunnel engineer for the Michael Baker firm, present to answer questions and elaborate on the work depicted in the film.

All members are welcome to participate on the various committees; additional volunteers should contact Clifford J. Christ, President.

Mr. Leonard J. Gallucci, Chairman of the Clambake Committee, announced that the annual clambake will be held at Clifton Beach on Saturday, June 20, 1970. This affair has always been a great success. Make your plans now to be in attendance. Mr. Gallucci also announced tentative plans for holding a family-day picnic and outing at Rocky Glen Park sometime during August. This should be a big day for a get acquainted session with the members families.

Members are anticipating another good time at our joint social meeting with the East Penn Section at the Sportsman Club, Blakeslee, Pennsylvania on Friday, April 17, 1970.

### NEW MEMBERS

Richard G. Lively, Waynesburg, Pa., P.D.H.  
Frank A. Merendino, Connellsville, Pa., P.D.H.  
Donald P. Ryan, Uniontown, Pa., P.D.H.

### NORTH EAST PENN SECTION

Robert M. Evans, Public Relations

The March meeting of the North East Penn Section featured an address by Mr. Edward J. Siodlowski, Executive Secretary of the Pennsylvania Asphalt Pavement Association, for the past four years. Prior to that he was with the Cities Service Oil Company as technical field representative attached to the asphalt sales department for over nineteen years. He is a graduate engineer, member of various societies, including the Association of Asphalt Paving Technologists, Construction Specification Institute, Engineering Society of Massachusetts and he is a Senior Member of the Harrisburg Section; A.S.H.E. His presentation included film slides depicting method of black top paving direct on prepared subgrade, was highly informative, and well received by the member present.

Further discussion regarding the hosting of the 1971 A.S.H.E. National Convention disclosed that initial contacts were being made relative to obtaining a site. The convention will be held in the Pocono Mountain area. Various committees have been formed. General Chairman for the affair will be Thomas J. Harrington, District Engineer, Scranton District, Pennsylvania Department of High-

ways; Vice-Chairman, Clifford J. Christ, Contractor, Wyoming Sand and Stone Company.

The following members have volunteered their services for the various committees: Albert E. Peters, Thomas J. Kane, George J. Parrs, John M. Robinson, Jr., Joseph C. Ostroski, David B. Jones, John M. Finn, James J. Volpe, Leonard J. Callucci, Harold W. Kimble, Robert N. Morden, Alan DuBosar, Joseph E. Notarotomas, Michael A. Czachor, Paul A. Lucas and Joseph E. Swegal. The committees to be formed are Program, Advertisement, Registration, Finance, and Reception. The Program Committee will contact various establishments in the Pocono Area, including Shawnee Inn, Shawnee on the Delaware; LeChateau, White Haven; Pocono Manor Inn, Mount Pocono; and Hotel Tammiment, Bushkill.

### NEW MEMBERS

Alan D. Crowhurst, New York, N.Y., Consultant  
Allan J. DuBosar, P.E., Dalton, Pa., Consultant  
David L. James, Clarks Summit, Pa., Consultant  
Joseph G. Lockner, Scranton, Pa., Dept. Forests and Waters  
Thomas E. Munroe, Honesdale, Pa., Contractor

### SOCIETY TO LOSE KANAWHA VALLEY SECTION OF W. VA.

After an unsuccessful year due to lack of interest, officials of the Kanawha Valley of West Virginia Section have voted unanimously to dissolve that section which had a membership of ninety-two. This section was organized and chartered as No. 11 on January 18, 1967. This is the first of the twelve sections to relinquish its membership in the Society. The national Board of Directors will take formal action to withdraw the charter, at a meeting scheduled for April 11th. Any member of the defunct section can be transferred to another section of his choosing, upon request to national headquarters, providing current dues are paid.

### ALTOONA SECTION

Lawrence G. White, P.E., Hollidaysburg, Pa.,  
James Melynk, Colver, Pa., P.D.H.  
Ronald G. Horner, Johnstown, Pa., P.D.H.

\* \* \* \* \*

PDH's first all-weather bridge, the the 13th St. Bridge in Franklin, was officially opened December 19.



## DELAWARE VALLEY SECTION

Robert Cameron, Public Relations

Ninety-one members of the Delaware Valley Section of A.S.H.E. turned out for the dinner meeting on February 18 at the Holiday Inn, King of Prussia, to learn about continuous reinforced concrete pavement.

Speaker was John Quigg, of the Bethlehem Steel Corporation, who showed a film on the subject. He was assisted by James Montgomery, Jr., of Bethlehem's engineering department, a member of the East Penn Section, who showed slides. The program covered aspects of both design and construction of continuous reinforced concrete pavement.

This method of construction has been employed by the Pennsylvania Department of Highways on Traffic Route 15 and 22 in the Harrisburg Area.

It is being recommended for use on Interstate 476 in District 6, the famed "Blue Route."

Jack Townes, of Bethlehem Steel Corporation, President of the Delaware Valley Section, presided at the meeting.

### NEW MEMBERS

C. William Sharon, Norristown, Pa. Equipment Salesman  
Stephen Hennel, P.E., Ardmore, Pa., P.D.H.  
William F. Lilly, P.E., Pottstown, Pa., Materials Producer  
William B. White, P.E., East Norriton, Pa., Consultant

## PITTSBURGH SECTION

Robert Haynos, Public Relations

The nominees for the various offices of the Pittsburgh Section have been made by the Nominating Committee as follows: President, Kenneth E. McCurdy, P.E.  
1st Vice President, G. Richard Wright, P.E.  
2nd Vice President, Howard C. Schubel, Jr.  
Secretary, William J. Dobias  
Treasurer, Millard F. L. Stewart, Jr.  
Directors, 3 Years, Howard G. Hartman

R.S.

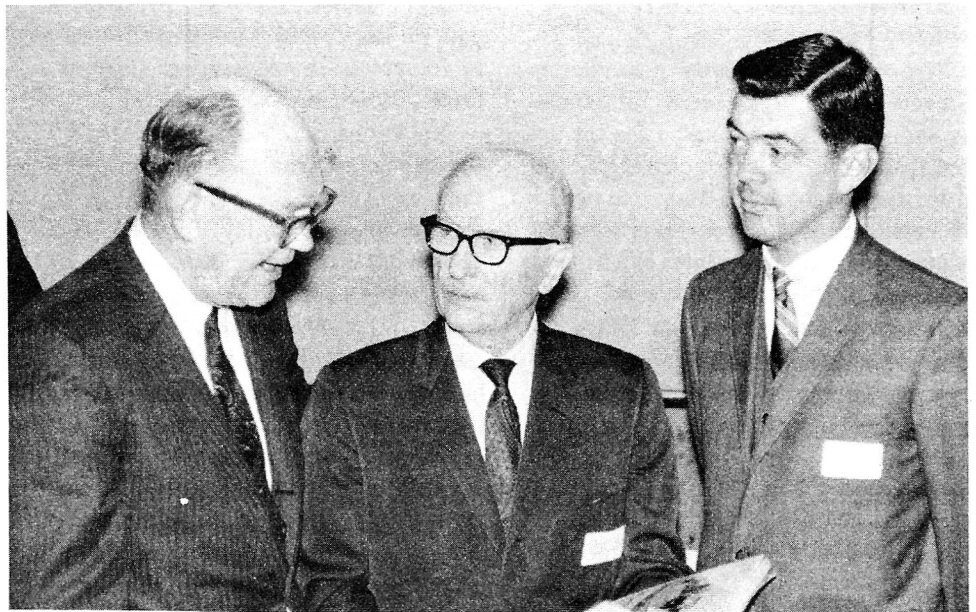
William J. Katzenmeyer

Erino V. Malacarne

Directors, 2 Years, Ebert J. Kinter  
Raymond R. Gedrock  
William M. Buck

Directors, 1 Year, Ewing O. Ahlin  
Robert A. Haynos  
Rudolph Melani

"Air Pollution" . . . a serious situation now facing the highway construction in-



John Quigg, of Bethlehem Steel Corporation, makes a point with Paul L. Thomas, center, District Engineer of District 6, Philadelphia, and Jack Townes, also of Bethlehem Steel, President, of the Delaware Valley Section of A.S.H.E. at recent meeting at Holiday Inn, King of Prussia.

dustry in Pennsylvania, was the topic of the February meeting of the Pittsburgh section. Featured speaker of this meeting was Dr. William Hunt, Commissioner of Allegheny County. Dr. Hunt emphasized the importance of air pollution controls and the environmental hazards that have been created over the past century.

The March meeting of the Section featured Robert Bielo, Executive Director of the Pennsylvania Fish Commission. His topic for the meeting concerned highway construction and clean streams.

April 10th was the Section's "Ladies Night" at the Holiday House in Monroeville.

Peter J. Wagner has been elected as the new President of the Constructors Association of Western Pennsylvania. Mr. Wagner is the General Manager of Nick Istock, Inc., a heavy and highway firm located in Aliquippa, Pa.

### NEW MEMBERS

Michael Bobonich, Cheswick, Pa. P.D.H.  
Michael J. Gittens, P.E., Pittsburgh, Pa., P.D.H.  
William C. Hineman, Aliquippa, Pa., Consultant

## CLEARFIELD SECTION

The following nominees for the various offices of the Clearfield Section have been made by the Nominating Committee: President, Robert A. Philage  
1st Vice President, Lawrence P. Opalisky  
2nd Vice President, Simon A. Boob

Secretary, Richard C. Payton

Treasurer, Yvonne L. Buck

Directors, 3 years, William M. Townsend  
Sanford R. Grubb

Edwin G. Douglas

Directors, 2 years, Gerald J. Madison

John K. Barnie

Roy H. Herlocker, Jr.

Directors, 1 year, Francis B. Spangler

Byron M. Bowes

Winfield R. McClure

## ENGINEERS, BIG STORY OF DECADE

In the past 10 years one of the big stories of the Pennsylvania Department of Highways has been the growth of its profession engineering staff.

During the past recruitment season 155 young engineers were hired, more than the total number employed by the Department 10 years ago.

Today the Department has approximately 500 civil engineers, plus about 200 engineering technicians.

\* \* \* \* \*

"Civil Engineering Careers," an informative and colorful 24-page brochure has been produced by the Bureau of Personnel.

\* \* \* \* \*

You may not be able to fool all the people all the time, but these super-highway interchange signs come pretty close to it.



AMERICAN SOCIETY of HIGHWAY ENGINEERS

# 8<sup>th</sup> Annual Convention

See You In  
"Chocolate Town" MAY 8·9·10<sup>th</sup>.

## WONDERFUL GOOD WEEK END

*being planned for You & Mrs.  
in the land of the...*

## Pennsylvanie Dutch Country

*Make your Plans Now to attend*

SPEAKERS FELLOWSHIP

GOLF  
DANCING

COCKTAILS  
TOURS

### HOLIDAY SNOWSTORM ONE OF THE MOST SEVERE

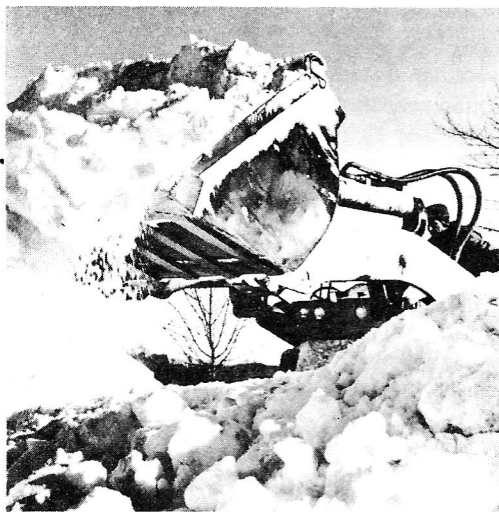
When snowstorms affecting most of Pennsylvania are recalled, the one on Christmas Day, 1969 must rank among the most severe.

Up to 20 inches of snow blanketed large sections of the Commonwealth. With 10 to 20 inches on the ground when the storm started, the depth reached 40 inches in the mountainous areas of the Hollidaysburg, Allentown and Montoursville districts.

Winds up to 45 miles per hour created serious drifting problems during the following five days.

Headquarters in the Central Office for maintenance operations went on an emergency basis to coordinate activities in the statewide battle.

Philadelphia was hit by snow and rain



Route 22 near Indiantown Gap, Lebanon County cleared for two lane traffic. Snow had to be removed rather than plowed in many areas.

while only the Pittsburgh area escaped with only light snowfall.

Snowdrifts of 10 to 15 feet were common. Sections of I-81 were closed for brief periods in Franklin and Schuylkill counties. Helicopters and snowmobiles were pushed into service.

PDH maintenance forces were taxed to the limit, but once again were the unsung heroes. They were on the go for nearly a full week with little more than rest breaks. It was a short Christmas Day for most, and a holiday season over-loaded with work.

\* \* \* \* \*

Appius Claudius, Roman censor, built the road, famous in history, known as the Appian Way.

\* \* \* \* \*

What's the use of grumbling if they give you a difficult task? Think of bigger jobs ahead while you're doing what they ask!

\* \* \* \* \*



# ***The A.S.H.E. SCANNER***

Volume VI, No. IV.

THE AMERICAN SOCIETY OF HIGHWAY ENGINEERS

April, 1970

## **8th ANNUAL CONVENTION AT HERSHEY TO BE WELL ATTENDED**

What is expected to be the largest attended convention of the American Society of Highway Engineers at the Hershey Hotel, Hershey, Pa., on May 8th to 10th will feature a keynote address by Director of the U.S. Bureau of Public Roads Ralph R. Bartelsmeyer, Washinton, D. C. and other prominent highway industry officials.



**BARTELSMEYER**

according to General Chairman Donald C. Rimmer.

The entertainment program will include an "ice-breaker" party on Friday at 6 p.m. when renewal of old friendships and making of new acquaintances will bring together the early arrivals. The Saturday morning program will feature an outstanding work shop program for section officers and others who desire to attend.

The Saturday luncheon will feature the address by Mr. Bartelsmeyer, remarks by Secretary of Highways Robert G. Bartlett and others. The Saturday afternoon business meeting will see the election of the new officers and directors for the 1970-1971 fiscal year, together with reports and discussions of the year's experience by sections. On Saturday evening the annual banquet will take place, followed by dancing.

Particular attention is directed to the hotel rates at Hershey, which rates in-

clude meals. This feature is responsible for the low registration fee, which this year is applicable to members of the Society only, and not to guests.

Besides golf, the entertainment program will include a tour of the famed Hershey Chocolate plant and the beautiful rose garden of the chocolate town.

Reservations should be made early by those who plan to be guests at the hotel, and should be made direct with the hotel management.

The keynote speaker at Saturday's luncheon has been director of the U.S. Bureau of Public Roads since May 8, 1969 and is eminently well known in the highway industry. He is a native of Illinois and was educated at the University of Illinois where he majored in civil engineering and was graduated with a B.S.C. E. degree in 1932.

From 1932 until his present appointment at his Washington post, Mr. Bartelsmeyer was engaged as a junior highway engineer with the state of Illinois, county highway engineer of Washington County, Illinois, technical field engineer for Marquett Cement Manufacturing Co., of Chicago, county highway engineer of St. Louis metropolitan area, chief engineer of the Illinois Division of Highways, and vice president of H.W. Lochner, Inc., a consulting engineering firm in Chicago.

He has been president of the Illinois Association of County Superintendents of Highways, the Illinois Engineering Council, American Association; he has

continued on page three

### ***President's Message***

The annual membership meeting and convention are but a few days away when the administration of the American Society of Highway Engineers will be passed on to new hands. New, but not inexperienced. Robert E. Martzall, P.E., who will become the eleventh national president, has been active in the Society since its inception and is exceptionally well qualified to lead us during the coming year. John H. Leapson, P.E. and Robert L. Brown, P.E., who will become first and second vice presidents, are no less qualified and will form a great team.

I have been fortunate in having had the wholehearted cooperation of these men and all the national and sectional officers, as well as the committee members, for which I am sincerely grateful.

My special thanks to our untiring national secretary, Ralph T. Smith, without whose help I would have been hopelessly lost. I sincerely hope that he will continue to contribute to our Society for many years to come.

**ROBERT S. KEPNER, P.E.**  
President

### **BRING BANNERS ALONG !**

All A.S.H.E. section presidents are urged to bring their section banner for display at the luncheon and banquet of the Eighth Annual Convention at Hershey on May 8th to 10th. These should be turned over, upon arrival, to the registration desk, where they will be picked up by Robert H. Kalbach, program chairman, and can be retrieved from him after the Saturday night banquet and dance.