

The A.S.H.E. SCANNER

VOLUME IV, No. III

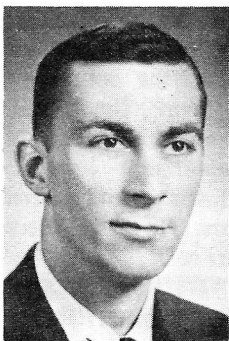
THE AMERICAN SOCIETY OF HIGHWAY ENGINEERS

FEBRUARY 1968

New Officers And Directors Are Nominated For 1968-69 Society Year

Nominations for national officers and directors of the American Society of Highway Engineers have been announced by the nominating committee, for the new Society year beginning at the close of the sixth annual convention on May 25, 1968.

The nominees and their respective of-



WACHTER

ices are: President, C. J. Wachter, Jr. of Easton, Pa.; 1st Vice President, Robert S. Kepner, of Clearfield, Pa.; 2nd Vice President, Robert E. Martzall, P.E., of Dillsburg, Pa.; Secretary, Ralph T. Smith, of Carlisle, Pa.; Treasurer, George K. Hart, of Williamsport, Pa.

Directors (3 Years), Robert L. Brown, P.E., Easton, Pa., Walter H. Burke, P.E., York, Pa. and Donald C. Rimmer, of Mechanicsburg, Pa.

The immediate past president of the Society automatically becomes a member of the new board of directors. This post will be occupied by current President James R. Barnicle, P.E., of Franklin, Pa.

The Constitution and By-Laws provides for additional nominations by petition from the Society. Ten percent (approximately 155 at this time) of the eligible voting membership of the Society must sign such a nominating petition, which must be submitted to the national Secretary sixty days before the annual meeting which date will fall on March 25, 1968. Each petition must be accompanied by a letter of acceptance from the nominee named in the petition. Only Senior Members in good standing shall be eligible for election to the national office of president and vice presidents. All Society members except Affiliate Members are qualified to vote as long as they maintain their membership in good standing.

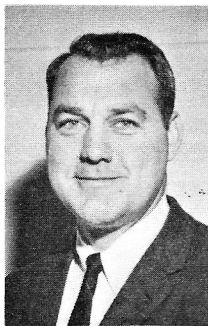
If nominations by petition are received, ballots will be provided the membership immediately after the closing date for nominations on March 25, 1968.

The national nominating committee, on which all sections had duly appointed representation, was under the leadership of Chairman John P. Rutter, P.E., of York, a past president of the Society.

MEMBER OF THE MONTH

Continuing our surprise feature of the random selection of a member of the American Society of Highway Engineers as the informal "member of the month", we present James A. Byron, P.E., the newly appointed deputy engineer for the Indiana District of the State Highway Department.

Byron is a Senior Member of the Harrisburg Section, A.S.H.E., and has been a resident of Camp Hill, Pa., but is planning to move his family to Indiana, Pa. and transfer his membership affiliation to the Indiana Section. He was formerly assistant district engineer for operations in the nine-county Harrisburg District.



BYRON

He succeeds George Spence who recently retired. District Engineer for the Indiana area is William Balint.

A registered professional engineer, Byron was graduated from Virginia Military Institute in 1953 with a bachelor of science degree in civil engineering. He was with the Florida State Road Department prior to joining the Pennsylvania Department of Highways in January 1957.

A native of Donora, Byron is married

President's Message

By rummaging through a stack of miscellaneous articles in my "catch-all file", and doing a little editing, I can offer the following portions of these articles for your enjoyment - and perhaps they might even provoke some thought on the future of the highway industry and your contribution toward the betterment of it through our Society. We are all sometimes painfully aware of the fact that we live in rapidly changing times. It appears that every day's newspaper and telecast points up the rapid - even startling - advances in medicine, science and other sophisticated technologies. It does no harm, and is enlightening to some extent, to reflect on just how our industry and times in general have changed - keeping in mind, however, that we are still dealing with the age-old, unshakingly stable facts of human nature.

All of us at our places of employment are guided by a framework of principles: such as working hours, salary, etc. Consider for comparison these excerpts from rules setting forth the terms of employment in an 1878 carriage shop:

- * Working hours shall be 7 a.m. to 8 p.m. every day but the sabbath. On the sabbath everyone is expected to be in the Lord's house.
- * All employees must show themselves worthy of their hire.
- * All employees are expected to be in bed by 10 p.m., except each male employee may be given one evening a week for courting purposes and two evenings a week in the Lord's house.
- * After an employee has been with our firm for five years he shall receive an added payment of five cents per day, providing the firm has prospered in a manner to make it possible.
- * It is the bounden duty of each employee to put away 10% of his wages for his declining years, so that he will not become a burden upon the charity of his betters.
- * Any employee who is shaven in public parlors, frequents pool rooms or uses tobacco shall be brought be-

Continued on page three

Continued on page three

Technical Cross Section

John H. Leapson, P.E.
Chairman, Technical Committee

RELIEVE CONGESTION

There are times when even urban free-ways, which were conceived and built to reduce congestion on the city streets, must themselves be relieved of congestants. One of the more common circumstances that slows freeway travel, particularly during rush hours, is too much pressure at entrance ramps. Where normally a driver entering the freeway may seek and employ a gap in the mainstream flow to merge and become a part of it, high density traffic will complicate this action and, from time to time, lead to faulty decisions, possible accidents and resulting cumulative (telescoping) slowing of the traffic stream.

Among the devices contemplated to reduce this adverse effect is that of metering the admission of vehicles from a ramp to a freeway. This technique involves the use of sensors to measure traffic density and speed as it approaches a ramp, computation of the exact instant when a car may fit comfortably into an approaching gap and, finally, signaling the driver on the ramp that the appropriate moment is at hand. This means, of course, that the first car has been denied entrance until the time is propitious.

Such a control system has been installed on the northbound side of the John C. Lodge Freeway in metropolitan Detroit. It serves eight entrance ramps in a critical section of the facility where major rush-hour bottlenecks have been identified at two locations. Ordinary three-section (red, yellow, green) traffic signals have been installed on these ramps, and yellow beacons are in place at the entrances to the ramps. When the system is in use, and this will only be between 2:30 and 6:30 p.m. on Mondays through Fridays, the yellow beacons will flash to alert drivers to the fact that signals ahead are functioning and must be observed.

At these times, a vehicle on the ramp will approach a red light and must be stopped. When the system's computer determines that a suitable gap is approaching, the green signal will show and the vehicle may enter the freeway. Generally, only one vehicle will be admitted at a time, and the signals will pass through a brief yellow phase and back to red. The duration of the green, however, will be a variable and, if a suitably long gap is available, additional cars may be admitted.

The ramp metering system has been installed under AASHO sponsorship. The Texas Transportation Institute has contracted to study this and other methods of eliminating rush-hour congestion on the freeway. Administration of the contract will be performed by the Highway Re-

search Board of the National Academy of Science. The work is being done in cooperation with the Michigan Department of State Highways, Wayne County and the cities of Detroit and Highland Park.

Among the effects of the unique "time toll" operation are expected to be improved safety, increased travel speed and elimination of speed variations. Additionally, it is anticipated that some drivers will seek alternate routes on lightly traveled city streets.

Article taken from PUBLIC WORKS for November, 1967.

GUARDRAILS

"Highway Guardrails. . . A Review of Current Practice", National Cooperative Highway Research Program Report No. 36, 33 pages, \$1.60, from Highway Research Board, 2101 Constitution Avenue, N. W., Washington, D. C. 20418.

Two research engineers at the Cornell Aeronautical Laboratory, Buffalo, New York, have recommended a long term program of research aimed at finding better guardrail systems and improving the criteria that help engineers decide when guardrails actually make a roadside safer.

After reviewing present practices, the researchers conclude that "the need for guardrail is, of necessity, based primarily on judgment that is tempered by practical experience gained over the years". Therefore, they say, "there are many and varied opinions as to the conditions that justify the installation of guardrail".

The researchers contend that a more scientific basis for warrents could be developed.

The advantages and disadvantages of various types of rigid, semi-rigid and flexible barriers are discussed.

KANAWHA VALLEY OF W. VIRGINIA SECTION

NEW MEMBERS

Donald W. Clem, P.E., Beckley, W. Va., Consultant
James E. Ennis, P.E., Hansford, W. Va., Consultant
Ingen Kang, Hurricane, W. Va., Consultant

INDIANA SECTION

NEW MEMBERS

Edward Farrell, Indiana, Pa., P.D.H.
Charles D. Scully, Reynoldsville, Pa., P.D.H.
William A. Smith, Glen Campbell, Pa., P.D.H.
Kenneth L. Lippman, Indiana, Pa., P.D.H.

"BOB" SLOVINAC PROMOTED

Robert M. Slovinac, of Steelton, a past president of the Harrisburg Section, A.S.H.E., and a national director of this Society, has been promoted to assistant district engineer in charge of operations for the nine-county Harrisburg district of the State Highways Department.



SLOVINAC

Slovinac succeeds James A. Byron, who recently was promoted to the position of deputy district engineer and transferred to Indiana, Pennsylvania. Slovinac will be in charge of maintenance, issuance of permits, municipal

services and traffic in the counties of Dauphin, Lancaster, York, Cumberland, Adams, Franklin, Juniata, Lebanon and Perry. In the Department 18 years, Slovinac has been district plans engineer for the past five years. He is a registered professional engineer.

NORTH EAST PENN SECTION

NEW MEMBERS

David A. Evans, Hunlock Creek, Pa., Contractor
Walter F. Siemietkowski, Taylor, Pa., P.D.H.

WILLIAMSPORT MEMBER ADVANCE

Paul A. Edmunds, P.E., of Williamsport, a Senior Member of the Williamsport Section, A.S.H.E., has been named assistant district engineer for construction by the State Highways Department with headquarters at Montoursville.

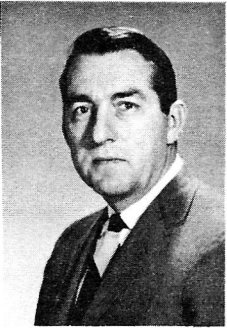
Edmunds, who has been with the Department for seven years, moves up to the newly created assistant district engineer's position as part of a continuing reorganization program. He will report directly to District Engineer Kenneth C. Larson.

Edmunds will be responsible for all construction activities in the counties of Columbia, Lycoming, Montour, Northumberland, Snyder, Sullivan, Tioga and Union. Currently the Highways Department maintains 3,905 miles of highways in the district.

He is a graduate of Shamokin High School and Penn State University from where he received his civil engineering degree in 1960. He is a registered professional engineer.

NAMED FIRST RESEARCH ENGINEER

Wade L. Gramling, P.E., of Camp Hill, Pa., a Senior Member of the Harrisburg Section, A.S.H.E., has been named as the first research engineer of the Pennsylvania Department of Highways.



GRAMLING

Gramling, who was with the Portland Cement Association as paving engineer for Pennsylvania, will be responsible for the supervision of an expanded research program under Leo. D. Sandvig, Director of the Bureau of Materials, Testing and Research. Highway research projects are

being conducted under contract with Penn State University, Bucknell University, Lehigh University and Villanova University. Research is budgeted at \$1 million this year.

A registered professional engineer, he previously had been with the Highways Department from 1947 to 1953. He is a graduate of Johnstown High School and the University of Pittsburgh from where he received his bachelor of science degree in civil engineering.

PRESIDENT'S MESSAGE

continued from page one

fore management to give reasons why he should be continued in employment.

And, for further reflection, consider these principles taken from a 1910 book on job estimating.

- * Common labor will be paid at the rate of twenty cents per hour; skilled labor twenty-five cents per hour.
- * For economy in excavating, use drag scrapers up to 200 ft., wheelbarrows from 200 to 300 ft., wheel scrapers from 300 to 600 ft., one-horse carts from 600 to 800 ft., two-horse dump wagons for anything over 800 ft.
- * A man with a pick will loosen 4 cu. yds. of earth in 10 hours. On a 25 ft. haul a man with a team and drag scraper will make a round trip in 1½ minutes and will excavate 50 cu. yd. of earth in 10 hours.

Our society has many members whose boyhoods reach back into the days covered by this book. (and some who even

worked under these conditions). They can relive and easily recall the almost unbelievable individual and collective changes in our economy—of which our industry is a most vital part. Presently, most of us are vitally connected with completion—among other things—of the 41,000 mile interstate highway system with benefits of working conditions and take-home pays that our immediate ancestors would have considered in the realm of science fiction. We can only hope that by doing our fair share (and enjoying it all the while) we are contributing to the betterment of the succeeding generations in the same proportion as we have been privileged to receive. We are certainly leaving them the debt to pay for these improvements—with the major exception of highways.

James R. Barnicle, P.E.

MEMBER OF THE MONTH

continued from page one

to the former Evelyn Sciotto, of Johnstown. They are the parents of three children.

District Ten, with headquarters in Indiana, is comprised of Armstrong, Butler, Clarion, Indiana and Jefferson counties. There are 3,767 miles of State maintained highways in the five-county district.

AWARDED HONORARY MEMBERSHIP

Robert G. Bartlett, secretary of the Department of Highways, was signally honored by the American Society of Highway Engineers when he was awarded honorary membership in the Society by the Board of Directors on February 2, 1968. The selection for this outstanding honor was petitioned by the Delaware Valley Section of the Society, and the Secretary's membership affiliation will be assigned to that Section. The presenta-

tion of the award will be made during the Society's sixth annual convention at Philadelphia on May 25, 1968. Secretary Bartlett was named to this award because of his dedicated contribution to the advancement of the highway industry and his untiring support of the American Society of Highway Engineers.

CONVENTION PLANS PROGRESSING

According to John H. Leapson, P.E., President of the Delaware Valley Section, A.S.H.E., who is chairman of the 1968 convention committee, plans are progressing very satisfactorily on arrangements for this sixth annual affair to be held at the Bellevue Stratford Hotel in Philadelphia on May 25, 1968. The Delaware Valley Section will act as host section for this year's convention. Leapson announced this week that the feature speaker for the luncheon meeting of the convention will be Senator Jennings Randolph of West Virginia, who is chairman of the Senate Public Works Committee, and a staunch supporter of the highway industry. Full details of the program, etc. for this convention will be published in the April edition of the SCANNER.

PITTSBURGH PUBLISHES NEWS LETTER

Congratulations are in order for the Pittsburgh Section, A.S.H.E., with the appearance of the first edition of their monthly news letter, entitled "Pittsburgh X-Section". Two editions - December and January - have reached our desk and Editor Bill Katzenmeyer and Public Relations Jack B. Kenning are to be commended on the preparation of this organ and the full scope of news of that section's activities. Pittsburgh joins with the Harrisburg Section, which publishes the monthly "Profile", and the Franklin Section which will soon resume publication of their monthly news letter.

REWRITTEN CONSTITUTION & BY-LAWS INSERTED FOR INFORMATION OF ALL MEMBERS

So that all members of the American Society of Highway Engineers will be fully informed of the contents of the rewritten Constitution & By-Laws of the Society, the revised documents, as approved at a special meeting of the Board of Directors on February 2, 1968, are inserted in this edition of the SCANNER. Members will be called upon to ballot on the acceptance of these documents at sectional dinner meetings during the month of March 1968, when ballots will be furnished by each section to their members. The Society Constitution and By-Laws must be approved by a vote of the membership. All members should retain their copy of these documents for guidance in the conduct of the Society. The results of the balloting will be reported to the regular meeting of the Board of Directors in April, 1968.

HARRISBURG SECTION

Clyde C. Holler, Jr. Public Relations

Our January meeting was a very interesting one in which the Corrugated Steel Pipe Association of Pennsylvania showed slides and a film on corrugated steel pipe.

The February meeting will be held during National Engineers Week. This meeting is always interesting since all of the engineering societies combine for this at a dinner. Our speaker will be the Honorable Raymond P. Shafer, Governor of Pennsylvania.

In March we return to Schindler's Restaurant where Robert G. Bartlett, Secretary of Highways, will be the featured speaker.

For our April meeting we are pleased to present the assistant chief engineer for design of the Pennsylvania Department of Highways, Wade S. Lawrence.

You can see that our 1st Vice President and Program Chairman Tom McLaughlin has been working up some very interesting programs.

NEWS OF MEMBERS

John W. McLean, Paul E. Shalkop and Paul E. Sultzbach, all Senior Members, have been granted life memberships in the Society.

J. Dixon Early, P.E. has been advanced in grade from Member to Senior Member after becoming a registered professional engineer.

J. Chadwick Wagner, P.E., Senior Member and section past president, has transferred to the Pittsburgh Section. "Chad" has been one of our most active members since the inception of the Society. Our section banner was handcrafted by him. Formerly a project engineer with Capitol Engineering Corporation for the past fifteen years, Chad is now manager of Brill Engineering Company in their Pittsburgh office.

Calvin E. Heintz, P.E., Senior Member, had been named Federal aid secondary road engineer for the Bureau of Design in the Pennsylvania Department of Highways. Mr. Heintz is one of our new members of the Section.

NEW MEMBERS

Arden S. Kile, York, Pa., Consultant

Henry B. McDonald, P.E., Lemoyne, Pa. Contractor

Leon K. Saufley, P.E., Hummelstown, Pa., P.D.H.

Charles M. Upham, Jr., York, Pa., York Co. Traffic Engineer

Arthur E. Feeman, Jr., Jonestown, Pa., P.D.H.

Raymond E. Kreider, Jr., Lemoyne, Pa.

Equipment Sales

Robert S. Miller, Camp Hill, Pa., Equipment Sales

ALTOONA SECTION

Robert Naus, Public Relations

Our November meeting was held at the Colony Steak House Restaurant. John P. Walascheck, who is associated with the Neville Chemical Company of Pittsburgh, was our speaker for the evening. He narrated slides showing the various colors being impregnated into pavements. These colors are helping to control traffic and to make our highways safer.

We had no regular meeting in December but started the new year off with a program by Norman Cochrane, of the Portland Cement Association. Mr. Cochrane, President of the Pittsburgh Section, spoke on "New Developments in Concrete Paving Equipment".

Our March meeting has always been held in the form of "Ladies Night". At this meeting our section combines with the Pennsylvania Society of Professional Engineers and the Altoona Engineering Society to hold a dinner dance. This year the meeting will be held on March 29, 1968, at the Park Hills Country Club in Altoona, Pa. We all look forward to this social event.

We regret to announce that two of our members passed away this year. Joseph Flaig, Senior Member, associated with the Pennsylvania State Department of Highways and holding the position of permit engineer, died in September, 1967, and Jesse Ickes, Senior Member, who retired from the Pennsylvania State Department of Highways died in December, 1967.

SOUTHWESTERN PENNA. SECTION

John H. Coulson, Public Relations

The Southwestern Pennsylvania Section held its November meeting Friday, November 17 at Shadyside Inn near Uniontown. Robert Grant, of Crawford Equipment Company, presented a very interesting film on plant mixed stabilized base material.

On Friday, December 15, the Southwestern Pennsylvania Section held its first Christmas party at Pleasant Valley Country Club. This was also a ladies night affair and was very well attended. It will become an annual affair. The Committee arranged a very interesting program consisting of local talent which was well presented. The rest of the evening was spent in dancing. Every one had a good time.

We regret to announce the death of our veteran secretary, George Croushore, on January 4, 1968.

BILL PICKERING ADVANCED

William D. Pickering, P.E., of Harrisburg, has been named assistant district engineer in charge of pre-construction for the nine-county Harrisburg area of the Pennsylvania Highways Department. He succeeds Bernard L. Huntz who recently was promoted to deputy district engineer, and will be in charge of all pre-construction projects in the counties of Dauphin, Lancaster, York, Cumberland, Adams, Franklin, Juniata, Lebanon and Perry.



PICKERING

Bill is a Senior Member of the Harrisburg Section, A.S.H.E. and served as the section's treasurer and was editor of the section's monthly publication, The Profile.

Pickering, who joined the Department in 1961, had been with the district as design liaison engineer. He is a

registered professional engineer.

A native of Langhorne, Pickering is a graduate of George School (Bucks County) and Lafayette College, from where he received his bachelor of science degree in civil engineering. Also, he holds a bachelor of arts degree in liberal arts from Earlham College.

WILLIAMSPORT SECTION

James P. Sekinsky, Public Relations

The monthly meeting of the Williamsport Section, was held January 17th at the Carlton Manor in Williamsport.

Jim Lobach, sales representative for Bethlehem Steel, York office, presented a program on the nation's first orthotropic steel bridge erected by Bethlehem Steel over the Mississippi River at St. Louis. His informative talk on this new type of bridge design and erection was well received by the thirty-five members present.

The next regularly scheduled meeting will be held Thursday, February 22nd at the Hotel Lycoming. In observance of national engineers week, this meeting will be attended jointly by the highway engineers and the Pennsylvania Society of Professional Engineers.

NEW MEMBERS

Arthur F. Zeiders, Richfield, Pa., Contractor
Ronald E. Springman, Williamsport, Pa., P.D.H.

PITTSBURGH SECTION

Jack B. Kenning, P.E., Public Relations

The January meeting of the Pittsburgh Section, was one of the best attended, because of the program headed by District Engineer William S. Stephens, P.E. A panel discussion "Industry - wide Cooperation for Better Highways", was moderated by Mr. Stephens, and speaking for the various segments were: Fred D. DePasquale, P.E., assistant district engineer - "Operations of P.D.H., 11-0"; Charles R. Way, P.E., of Richardson, Gordon & Associates, consulting engineers; Arthur T. Livingood, manager, technical services, Keystone Division of Dravo Corporation, and Leo Russell, president of Russell-Standard Co., representing the contractors.

The February meeting of the Pittsburgh Section was held on Wednesday, February 14, at the Parkway Center Terrace Restaurant. The speaker was J. Russell Rohleder, supervisor, customer information, The Bell Telephone Company of Pennsylvania; his subject "The Optical Laser Beam".

We thank John Coulson and his guests, from the SOUTHWESTERN SECTION, for visiting with us at our January meeting. John's visit with us has inspired our meeting committee to invite other sections to meet with us at any later meetings.

Bill Katzenmeyer, the editor of the Pittsburgh X-Section, is to be congratulated for the fine presentation of our monthly news letter. Jack Coates and Bud Schubel, of Duquesne Slag Products, have been responsible for duplicating facilities and assisting in the editing of our X-Section.

We are losing our president, but we are very happy to learn of his promotion as "Paving Engineer for the Portland Cement Association". Norman T. Cochrane, P.E. is being transferred to Harrisburg.

Eugene "Gene" Mack, a member of the board of directors, has recently been appointed superintendent - maintenance, District 11-1. His experience in construction in the Pittsburgh district will enable this department to be one of the finest in the State.

Among those we are particularly happy to welcome into the membership of the Pittsburgh Section is William C. Peternel, of Pittsburgh, who for over twenty years has been public works manager and construction superintendent of Mt. Lebanon Township, Allegheny County. Mr. Peternel's interest and always reliable advice and help to our highway construction in-

dustry and its people has gained for him a wide friendship and his presence at our meetings will be an inspiration to our members.

NEW MEMBERS

Herbert J. Stenzel, Zelienople, Pa., Consultant
M. Robert May, Bridgeville, Pa., Materials Producer

James A. Christenson, P.E., Pittsburgh, Pa., Consultant

Frank J. Donatelli, P.E., Pittsburgh, Pa., Consultant

William C. Peternel, Pittsburgh, Pa., Municipal Engineer

EAST PENN SECTION

John F. Hanosek, P.E., Public Relations

At our January meeting, I. M. Hunter, retired electrical engineer of the Pennsylvania Power and Light Company, presented a very informative talk on "Electrical Curing of Concrete".

Our February meeting featured Robert Davidson, of the Corrugated Metal Pipe Institute, speaking on the various applications of Corrugated Metal Pipe.

The March meeting will be addressed by Warren Scherff and Mike Farrell, of the Keuffel and Esser Company. They plan to talk on the latest developments, surveying and reproduction techniques.

Secretary of Highways Robert Bartlett has announced the promotion of William Boykas to assistant district engineer in charge of construction for District 5-0. Bill has been with the department since 1957 and his promotion is part of the continuing reorganization program in the department.

For the first time in District 5-0 construction school history, the classes will be augmented by lectures from local materials producers and suppliers, as well as contractors. This concept has developed through PDH employees' contact and membership in ASHE.

Senior Member Fred Von Steuben, now retired and living in California, reports that California is now slip form paving at a width of four-lanes and at a speed of 400 feet per minute.

Slip form paving has come of age in District 5-0. Al Roman, of No. 1 Contracting Corporation, has successfully completed paving on L.R. 1035, in Berks County, and two other contracts will be paved this year using the slip form techniques.

NEW MEMBERS

James R. Bazley, Jr., Pottsville, Pa., Contractor
Bernard W. Schwartz, Allentown, Pa., Corps of Engineers

Richard E. Weikert, Jr., Center Valley, Pa., P.D.H.

Michael R. Homa, Allentown, Pa., P.D.H.

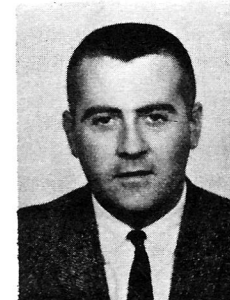
TOP LEVEL PROMOTIONS

Capitol Engineering Corporation, of Dillsburg, Pa., has announced the promotion of two key engineers who are both active members of the Harrisburg Section of the American Society of Highway Engineers.

Robert E. Smith, president of the firm,



MARTZALL



BOGGS

announces the assignment to top-level positions of Robert E. Martzall, P.E. and Edward W. Boggs, P.E. Both have served with distinction in this Society where Martzall is presently on the national board of directors and has been nominated for the office of second vice president for the 1968-1969 term, and Boggs has served as a director of his section and on many important committees.

Martzall will be responsible for all the firm's civil engineering work, other than sanitary. His new title is Senior Associate. He is a graduate of Vanderbilt University and has been associated with Capitol Engineers for

the past fifteen years, starting in 1952 as a highway designer. His previous experience included highway work with Davidson County, Tennessee, and with the Pennsylvania Department of Highways. He is a member of National Society of Professional Engineers (Secretary, Harrisburg Chapter, PSPE). He lives with his wife and 2 children at Dillsburg, Pa.

Boggs will be responsible for all soils engineering work. His new title is Associate, Soils. Mr. Boggs is a graduate of Massachusetts Institute of Technology and has been with the firm since 1962. He is a member of the American Society of Civil Engineers, National Society of Professional Engineers, and the International Society of Soil Mechanics and Foundation Engineering. He lives with his wife and 2 children at Mechanicsburg, Pa.

Example is not the main thing in influencing others. It is the only thing.

—ALBERT SCHWEITZER.

1967-68 NATIONAL OFFICERS

President, James R. Barnicle, P.E., Franklin, Pa.
1st V.P., C.J. Wachter, Jr., Easton, Pa.
2nd V.P., Robert S. Kepner, Clearfield, Pa.
Secretary, Ralph T. Smith, Carlisle, Pa.
Treasurer, Jack H. Gentry, Charleston, W. Va.
Immediate Past Pres., Walter H. Burke, P.E.,
York, Pa.

Directors, 3 Years

John H. Leapson, P.E., Philadelphia, Pa.
Robert E. Yeager, Hollidaysburg, Pa.
Robert M. Slovinac, Steelton, Pa.

Directors, 2 Years

Edwin F. Leone, Indiana, Pa.
Joseph R. Katusa, Carmichaels, Pa.
Robert E. Martzall, P.E., Dillsburg, Pa.

Directors, 1 Year

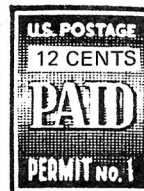
Robert L. Keller, P.E., Mechanicsburg, Pa.
George K. Hart, Williamsport, Pa.
Ray K. Grove, Camp Hill, Pa.

The American Society
of Highway Engineers
613 Belvedere Street,
Carlisle, Pa. 17013.

Return Requested



FIRST CLASS



First Class Mail

Membership Grows

Your Society membership continues to grow. Since September 1st a net gain of 83 new members has been recorded, bringing the total at this writing to 1540. Of this number 400 or 26 percent are professionals. The membership by sections is:

Harrisburg Section	305
Clearfield Section	86
Franklin Section	103
Altoona Section	103
Southwestern Pa. Section	97
Williamsport Section	82
East Penn Section	121
Indiana Section	146
Pittsburgh Section	119
Delaware Valley Section	187
Kanawha Valley (W. Va.) Section	96
North East Penn Section	25
Total	1540

CLEARFIELD SECTION

James W. Thomas, Jr., P.E., Public Relations

On December 7, 1967, the Clearfield Section held a dinner-meeting at the Clearfield Elks Town Home in Clearfield. After the meeting, films of "Mackinac Bridge Diary" and "Professional Football Plays" were shown.

On January 25, 1968, the Clearfield Section held a dinner-meeting at the S.O.I. in Clearfield. The nominating committee reported they are preparing the list of candidates to be presented for election by the members to fill the offices in our section for the coming year. Mr. R. S. Kepner, National Second Vice President, gave a report on the results of the last meeting of national officers. After the meeting, Edgar Rits, the program specialist for the State Soil and Water Commis-

sion in Harrisburg presented slides and a talk on "Man's Relation to Soils, Plants, and Animals".

The planned programs for future meetings are as follows:

February - Dr. Lawrence H. Lappman, of Pennsylvania State University.

March - Mr. H. Babbitt Aiken, President, Calcium Chloride Institute, Washington, D. C.

April - Mr. Richard Phillips, Bridgeville, Pa., Prestress Bridges.

NEW MEMBERS

Robert I. Walker, P.E., Centre Hall, Pa., P.D.H.

Richard Greenwood, Clearfield, Pa., P.D.H.

James R. Uzzell, Snow Shoe, Pa., P.D.H.

Francis J. Devine, Philadelphia, Pa., Consultant
George B. Frey, Coatesville, Pa., Contractor
Zdenek Majer, P.E., Ardsley, Pa., Consultant
James D. Morrissey, Jr., Philadelphia, Pa., Contractor

Robert C. Collins, Jr. P.E., Villanova, Pa., Contractor

Thomas B. Smith, 2nd P.E., Berwyn, Pa., Contractor

Robert G. Bartlett, P.E., Camp Hill, Pa., Secretary, P.D.H.

Sam A. Cipolloni, Warminster, Pa., Contractor
Joseph M. Martosella, Philadelphia, Pa., Contractor

Charles F. Slaw, Jr., Gladwyne, Pa., Contractor
Henry F. Acchione, Jr., Philadelphia, Pa., P.D.H.

TO MODIFY MEMBERSHIP APPLICATION FORM

The standard membership application form will soon be modified to benefit applicants who have professional status, in that such status automatically qualifies them for Senior Membership. This action was approved by the Executive Committee of A.S.H.E. at its January 12th meeting. The modification will include a note on Page 1 of the form providing that if the applicant has professional status - registered engineer or surveyor - pages 2 and 3 of the form can be left blank, and that the applicant's registration number will be shown at the appropriate place on the form.

NOTIFY YOUR SECRETARY AT ONCE
IF YOU CHANGE YOUR ADDRESS.

DELAWARE VALLEY SECTION

Howard G. Minckler, P.E., Public Relations

A panel discussion on cost estimating was well attended at the bi-monthly meeting on Wednesday, November 29, 1967. The panel consisted of representatives of consultants, the department of highways, and contractors, who developed their approach on cost estimating.

A discussion of "Claims" was presented at our January meeting by Charles V. Stoelker, Jr., esquire, including claims caused by utilities.

Committees covering all aspects of the 1968 Convention have been appointed, and are now at work developing meeting ideas.

NEW MEMBERS

Joseph A. Ciccone, Doylestown, Pa., Contractor

Editor
RALPH T. SMITH
613 Belvedere Street
CARLISLE, Pa. 17013

Assistant Editor:
HUBERT E. THORNER
542 Benton Street
HARRISBURG, PA. 17104